



## IBM Tivoli Software

# IBM Tivoli Netcool Operation Insights V1.3 Implementation and Configuration

### Role

This training path is appropriate for individuals in the role of Administrator and Implementer.

### Assumptions

It is assumed that the individual following this roadmap has basic skills in the following areas:

- Knowledge of network management, server, and application monitoring- Skill Level 2
- Knowledge of operating system (UNIX, Linux & Windows), networking and firewall concepts- Skill Level 2
- Knowledge of specific operating system utilities (ftp, snoop, top, tcpdump, sftp, ssh, text editor)- Skill Level 2
- Knowledge of specific operating system commands (ls, ulimit, uname, ps)-Skill Level 2
- Knowledge of security (SSL, system user accounts)- Skill Level 2
- Knowledge of SQL (including procedures)- Skill Level 2
- Knowledge of scripting languages (shell scripting, Rules files, regular expressions, PERL, batch)- Skill Level 2
- Knowledge of protocols including TCP/IP, SNMP- Skill Level 2
- Knowledge of help desk and database systems- Skill Level 1
- Knowledge of html, cgi, Java and xml-Skill Level 2
- Knowledge of WebSphere Application Server-Skill Level 2
- Knowledge of JAZZ-Skill Level 2
- Knowledge of Impact scripting languages IPL or JavaScript – Skill Level 2
- Knowledge of published IBM product documentation and Best Practices for IBM Tivoli Netcool/OMNIBus V8.1-Skill Level 3
- Knowledge of published IBM product documentation and Best Practices for IBM Tivoli Netcool/Impact V7.1- Skill Level 3

**Skill Level 1** - Basic Skill/Knowledge: Familiarity with basic functionality and concepts, may need to rely on assistance from documentation or other resources.

**Skill Level 2** - Working Skill/Knowledge: Working knowledge of functionality and concepts, can use product or explain concepts with little or no assistance.

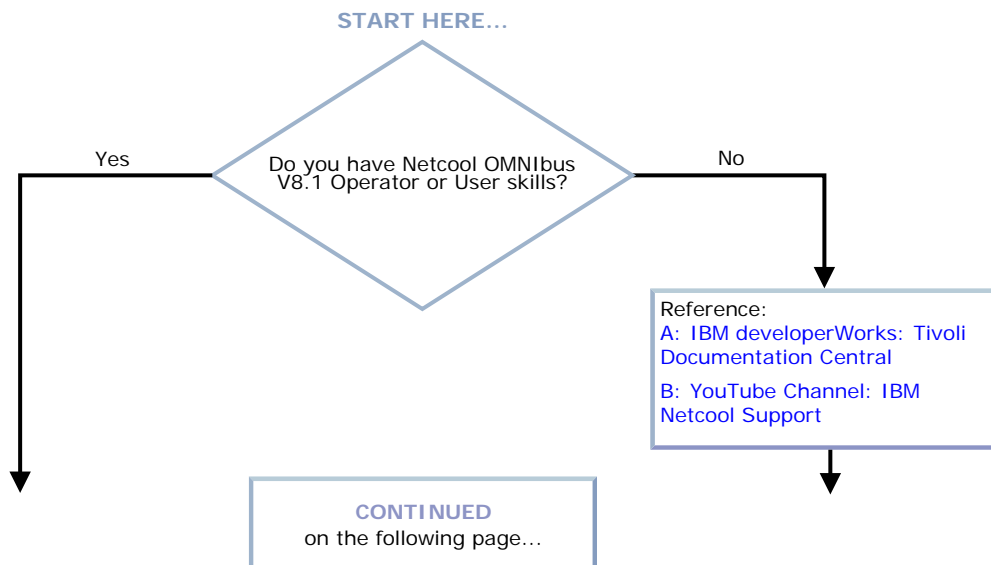
**Skill Level 3** - Advanced Skill/Knowledge: Substantial experience with functionality or concepts, can teach others how to use functionality or explain concepts.

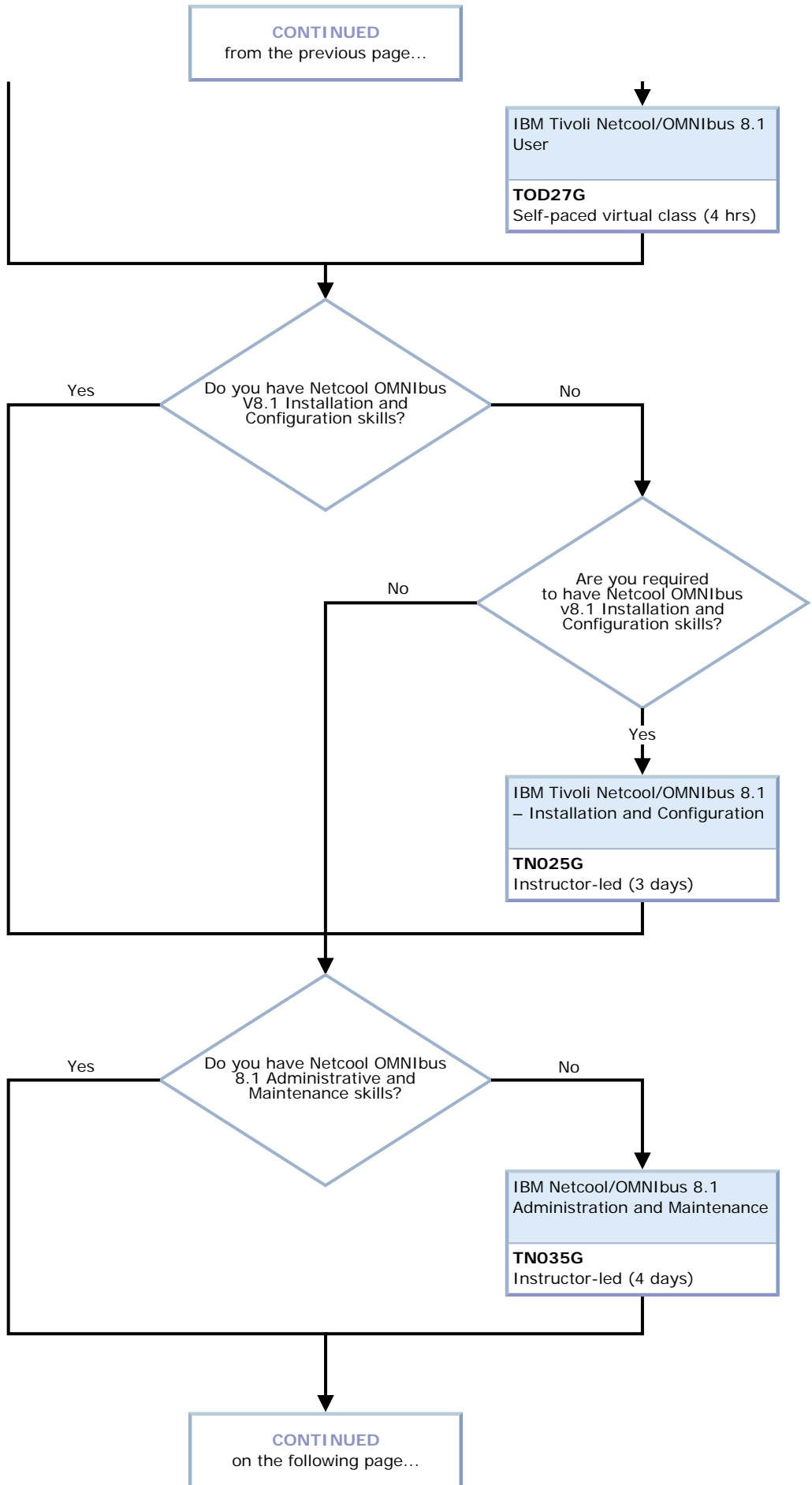
**Skill Level 4** - Expert Skill/Knowledge: Extensive and comprehensive experience with functionality or concepts, can create or customize code, architecture, or processes.

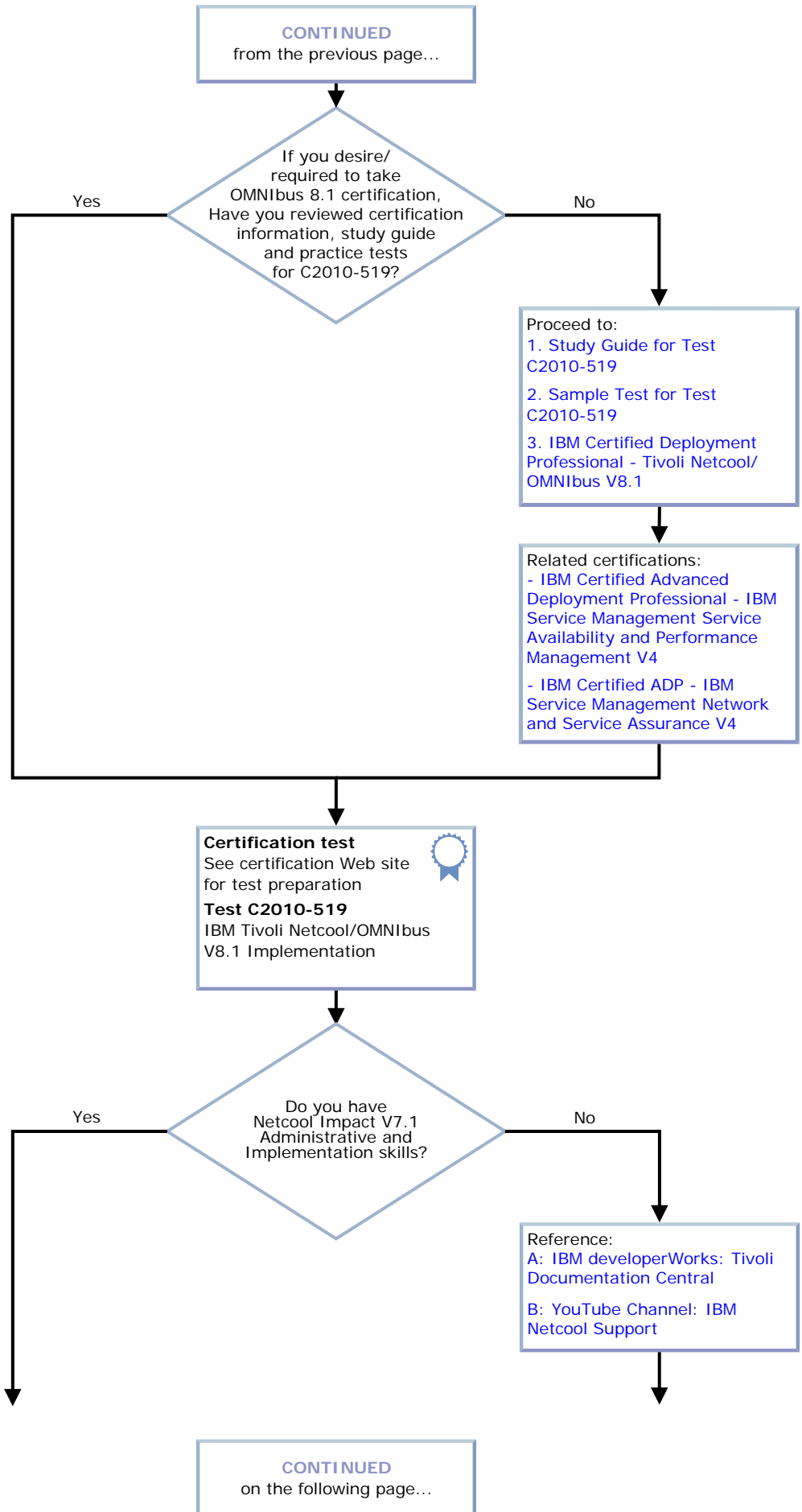
### Certification

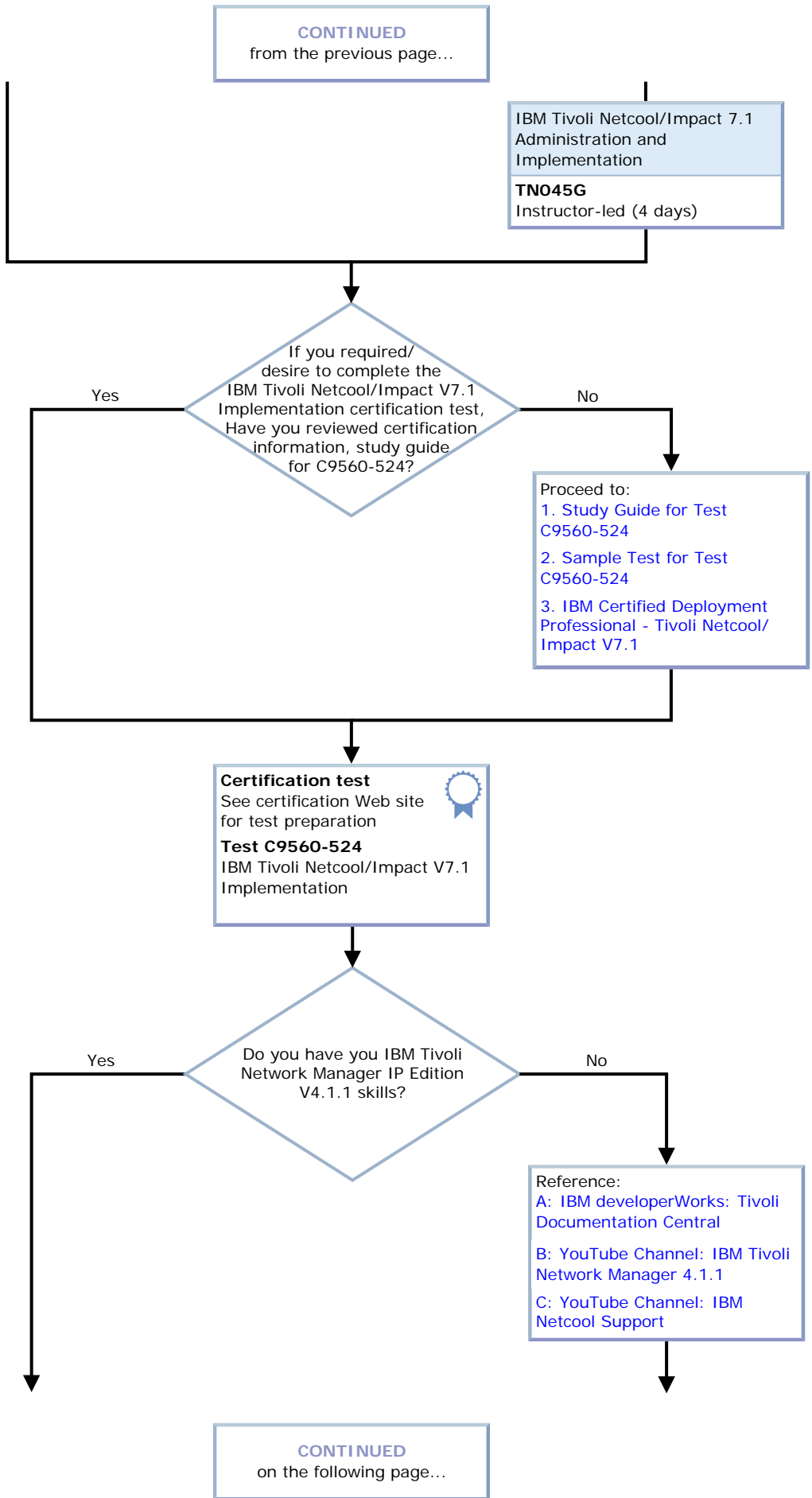
It's a business solution. It's a way for skilled IT professionals to demonstrate their expertise to the world. It validates your skills and demonstrates your proficiency in the latest IBM technology and solutions.

- Each exam page offers preparatory guidance and sample test materials. While courseware is recommended before taking an exam, keep in mind that real world experience is required to stand a reasonable chance of passing a certification test.
- A complete list of C&SI certifications is available on the [program homepage](#).



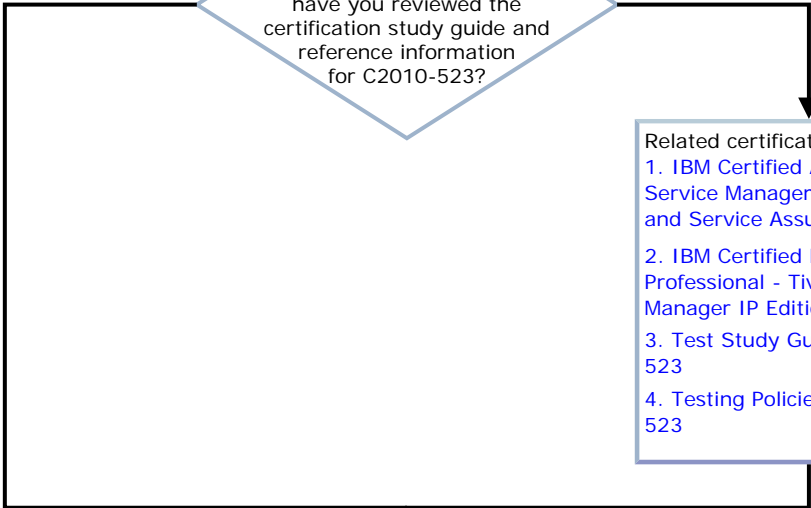
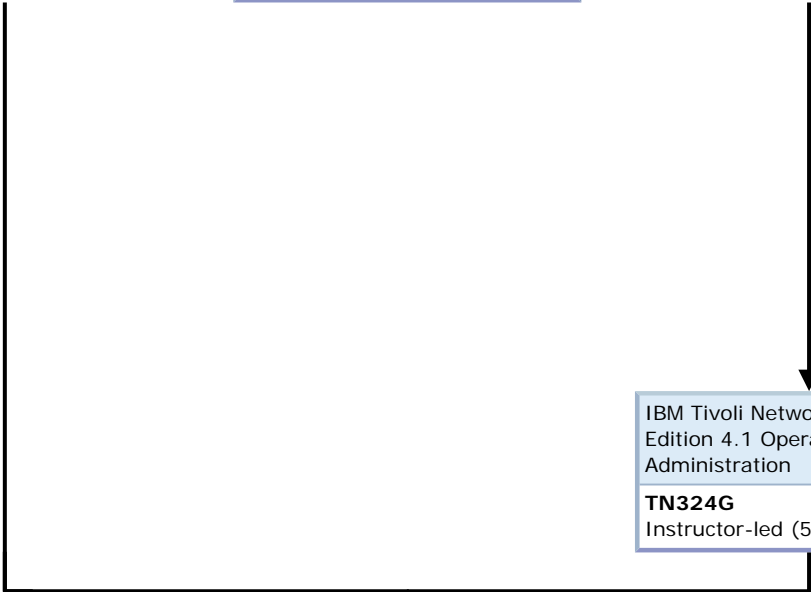






**CONTINUED**  
from the previous page...

IBM Tivoli Network Manager IP  
Edition 4.1 Operations and  
Administration  
**TN324G**  
Instructor-led (5 days)



Related certifications:  
1. IBM Certified ADP - IBM Service Management Network and Service Assurance V4  
2. IBM Certified Deployment Professional - Tivoli Network Manager IP Edition V4.1.1  
3. Test Study Guides for C2010-523  
4. Testing Policies for C2010-523

**Certification test**  
See certification Web site for test preparation  
**Test C2010-523**  
IBM Tivoli Network Manager IP  
Edition V4.1.1 Implementation

**CONTINUED**  
on the following page...

