



# ADVANCED TECHNOLOGY GROUP (ATG)

---



## Accelerate with ATG Webinar: Your Storage Virtual Assistant – FlashSystem.ai

Matt Key

Principal Storage Technical Specialist

IBM Advanced Technology Group – FlashSystem

IBM Technology

[mkey@us.ibm.com](mailto:mkey@us.ibm.com)

Byron Grossnickle

IBM Storage Virtualize/FlashSystem SME

[byrongro@us.ibm.com](mailto:byrongro@us.ibm.com)



## Accelerate with ATG Technical Webinar Series

---

*Advanced Technology Group* experts cover a variety of technical topics.

**Audience:** Clients who have or are considering acquiring IBM Storage solutions. Business Partners and IBMers are also welcome.

To automatically receive announcements of upcoming Accelerate with ATG webinars - Clients, Business Partners and IBMers are welcome to send an email request to [accelerate-join@hursley.ibm.com](mailto:accelerate-join@hursley.ibm.com).

### 2026 Upcoming Webinars – Register Here!

[Adding Z CyberVault to Your CSM SafeGuarded Copy Environment](#) – May 12, 2026

[Protecting NAS Workloads with IBM Storage Defender](#) – May 14, 2026

[Turning Threat Detection into Action with IBM Copy Services Manager 6.3.17](#) – May 19, 2026

[IBM z17 Mainframe Enterprise 32G FICON Storage Solution](#) – May 21, 2026



### *Important Links to Bookmark:*

**Accelerate with ATG** - Click here to access the Accelerate with ATG webinar schedule for 2026, view presentation materials, and watch past replays dating back two years. <https://ibm.biz/BdSUFN>

**ATG MediaCenter Channel** - This channel offers a wealth of additional videos covering a wide range of storage topics, including IBM Flash, DS8, Tape, Ceph, Fusion, Cyber Resiliency, Cloud Object Storage, and more. <https://ibm.biz/BdfEgQ>

## ATG Offerings

---

### Client Technical Workshops

- IBM FlashSystem Deep Dive & Advanced Functions May 19-20 (Austin, TX)

### Date (Location)

### TechZone Test Drive / Demo's

- IBM Cloud Object Storage Test Drive - (VMware based)
- IBM DS8900F Safeguarded Copy (SGC) Test Drive
- IBM DS8900F Storage Management Test Drive
- IBM Fusion Test Drive – Backup and Restore with OpenShift Virtualization
- Managing Copy Services on the DS8000 Using IBM Copy Services Manager Test Drive
- IBM Storage Ceph Test Drive
- IBM Storage Ceph Test Drive - (VMware based)
- IBM Storage Protect Live Test Drive
- IBM Storage Scale and Storage Scale System GUI
- IBM Storage Virtualize Test Drive

Please reach out to your IBM Representative or Business Partner for more information.

**\*IMPORTANT\* The ATG team serves clients and Business Partners in the Americas, concentrating on North America.**

# Thank YOU! Tell Us How We Did!

---



- <https://ibm.biz/Bdpcj3>



# ADVANCED TECHNOLOGY GROUP (ATG)

---



## Accelerate with ATG Webinar: Your Storage Virtual Assistant – FlashSystem.ai

Matt Key

Principal Storage Technical Specialist

IBM Advanced Technology Group – FlashSystem

IBM Technology

[mkey@us.ibm.com](mailto:mkey@us.ibm.com)

Byron Grossnickle

IBM Storage Virtualize/FlashSystem SME

[byrongro@us.ibm.com](mailto:byrongro@us.ibm.com)



## Meet the Speakers – Matt Key

---



Matt Key is a 19-year veteran of solid state storage and came into IBM through the 2012 acquisition of Texas Memory Systems, the Houston-based engineering group behind the FlashCore Modules in IBM's distributed storage portfolio. Currently, he is the technical lead for Flash in the Advanced Technology Group (ATG), the client-facing group of subject matter experts across the portfolios of storage, servers, and software. Matt graduated Texas A&M (WHOOOP!) in 2006 with an engineering degree in telecommunications.

## Meet the Speakers

---



Byron Grossnickle is an IBM Storage Technical Specialist concentrating on Storage Virtualize software. This includes FlashSystem, SVC, and Storage Virtualize for Public Cloud. Byron has been with IBM 21 years exclusively in storage. Prior to working for IBM, Byron spent 6 years engineering storage in the Telcom Industry. Prior to that he worked 8 years in healthcare IT. Byron lives in the Kansas City area and is available to travel to customer engagements.

# The Vision

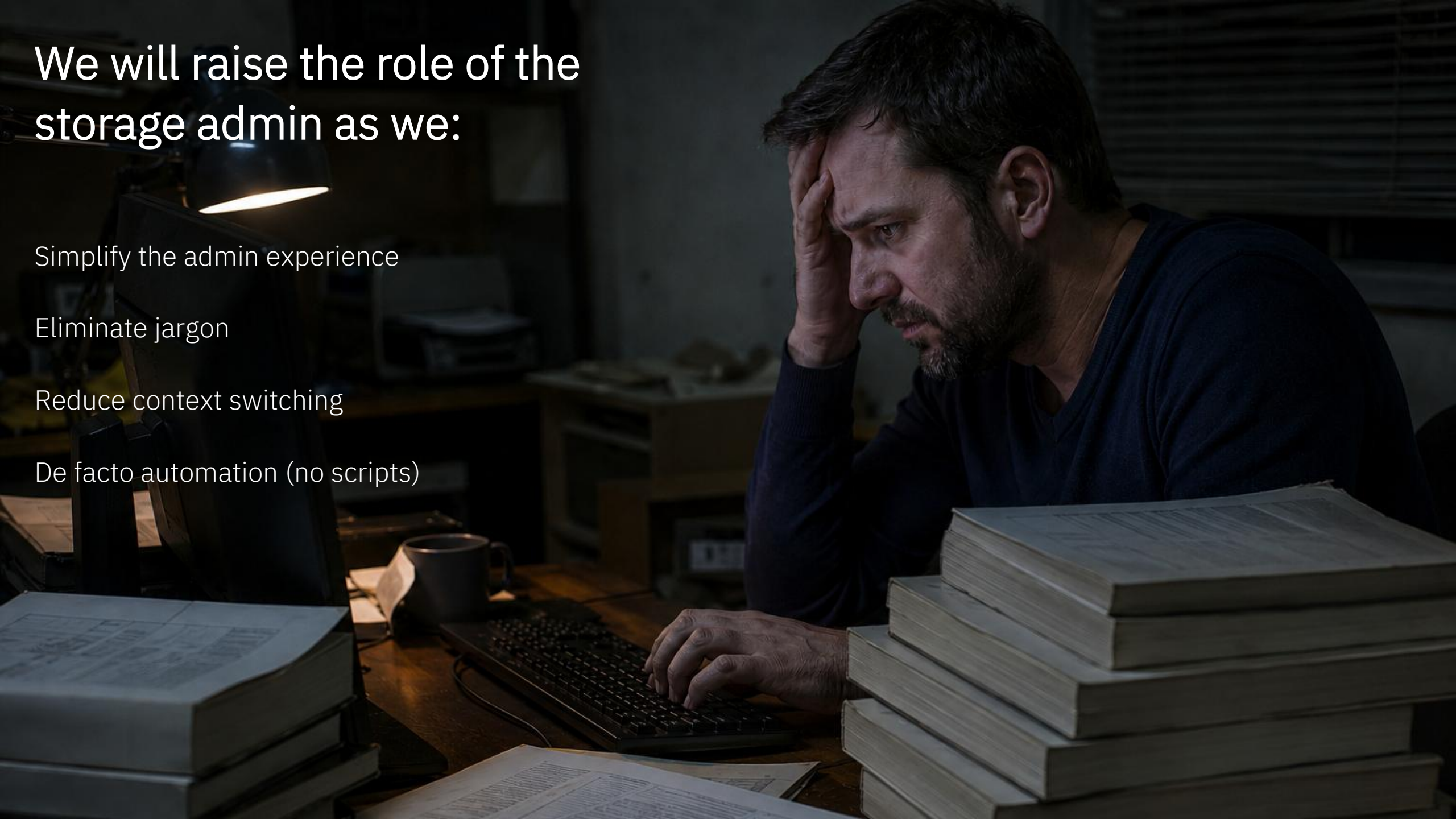
# We will raise the role of the storage admin as we:

Simplify the admin experience

Eliminate jargon

Reduce context switching

De facto automation (no scripts)



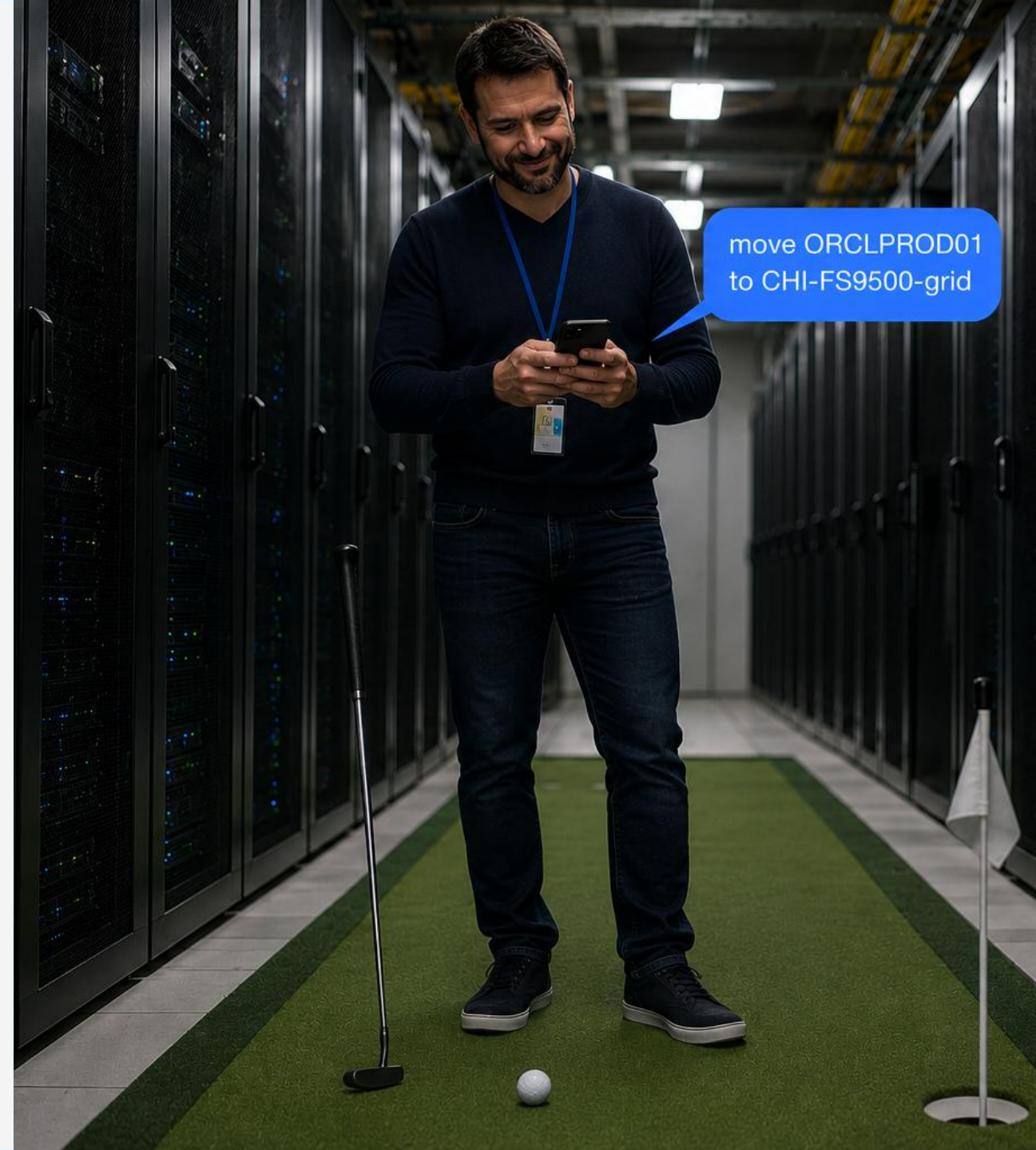
# To the Storage Governor

Command your storage

Workload mobility across grid

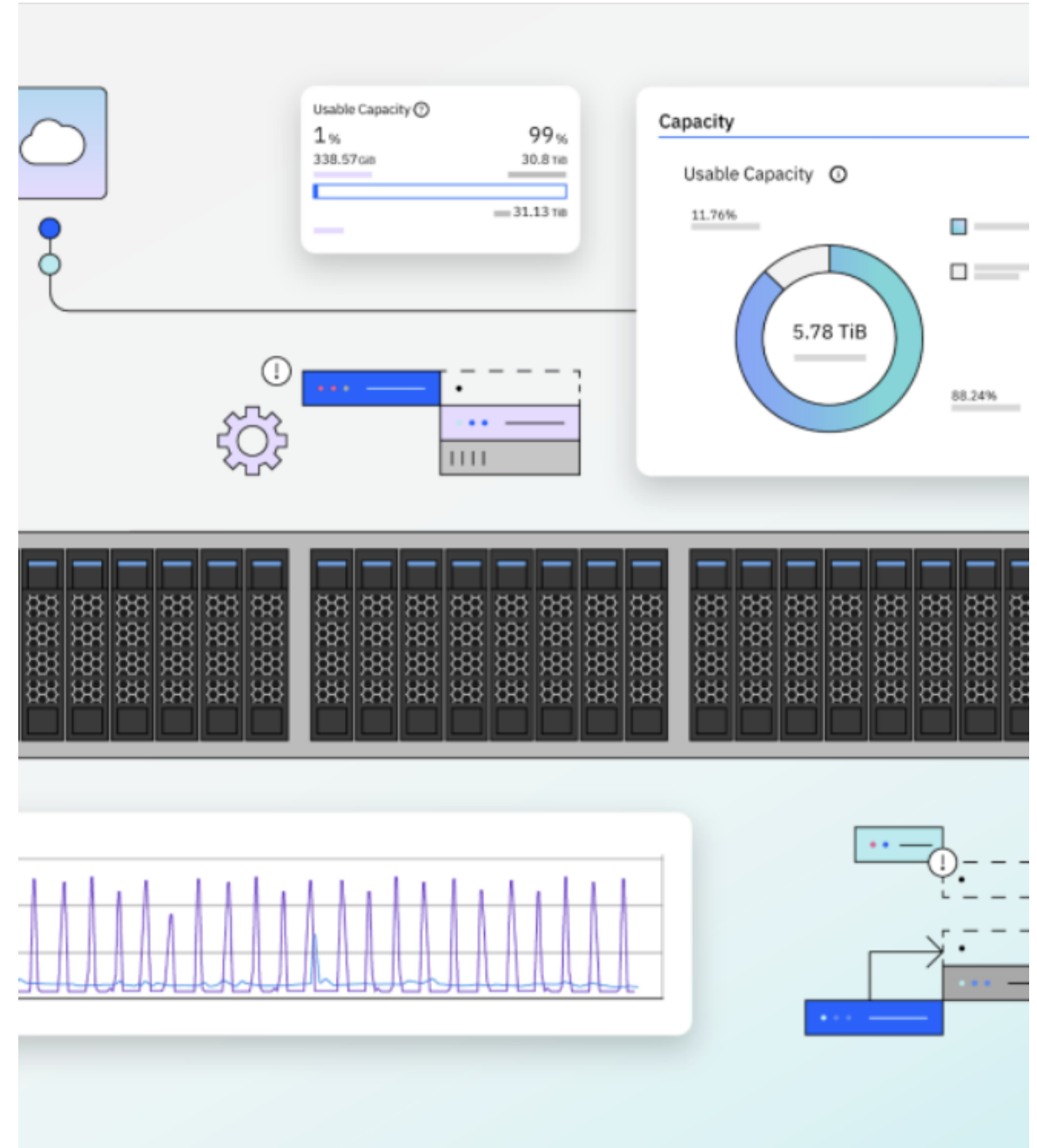
Protection and SLAs through policies

De-operationalized cyber resiliency



# IBM Storage Virtualize

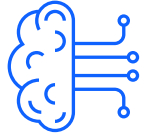
## FlashSystem.ai



What if you could  
have a conversation  
with your Storage?

*...and your Storage could  
take action for you?*

# IBM FlashSystem in 2026



## FlashSystem.ai

Self-managing storage  
powered by AI.

- Amplify human expertise with IBM trained AI agents.
- Zero-click operations accelerate tasks, increasing admin productivity and minimizing risk.
- Manage, optimize and secure storage using natural-language interactions, turning intent into action with Agentic AI.
- See even more here <http://flashsystem.ai/>



## Next-Gen Hardware

Industry-leading density and  
efficiency

- Deliver consistent, high performance for mission-critical workloads with fifth-generation FlashCore Modules, providing up to 105TB per module.
- Slash data center footprint and power consumption by at least half with a next-gen hardware platform offering up to 6× denser storage.
- No compromises data reduction and threat detection with IBM-exclusive computational storage.



## Operational Resiliency

Business continuity without  
compromise

- Detect attacks in seconds and recover fast using embedded AI; IBM-unique drive-level threat detection; and immutable Safeguarded Copies.
- Agentic AI detects resiliency gaps and identifies remediation delivering operational resiliency and minimizing downtime, data loss, and business risk.
- Achieve nonstop operations and peace of mind through advanced data resiliency and non-disruptive data mobility.

# Generative AI and Agentic AI are not the same



## Generative AI (GenAI)

- **Focus:** Content creation (text, images, code, audio).
- **Behavior:** Reactive; responds to specific prompts.
- **Core Function:** Identify patterns in data to produce novel outputs.
- **Example:** Using ChatGPT to write an email, or using Midjourney to create an image.



## Agentic AI

- **Focus:** Autonomous goal achievement and task execution.
- **Behavior:** Proactive; takes initiative to plan and act.
- **Core Function:** Breaks down complex goals into steps, self-corrects, and interacts with systems.
- **Example:** An AI system that books a trip by finding flights, hotels, and creating an itinerary without constant prompting.

## Key Differences Summarized

- **Autonomy:** GenAI relies on **external direction**; Agentic AI is **highly autonomous**;
- **Output:** GenAI produces **content**; Agentic AI produces **outcomes/results**.
- **Workflow:** GenAI performs **single tasks**; Agentic AI manages **multi-step workflows**.
- **Learning:** Static GenAI models **lack feedback or learning**, while Agentic AI often incorporates **feedback loops to learn from its own actions**.

# Talk to your storage where you have an admin that never sleeps

Three fundamentals:

Human in the loop

- Human must initiate and authorize the action via natural language

Actions are on-prem

- One way communication to pull relevant storage information from the cloud

FlashSystem.ai never sleeps

- ... so you can!

*FlashSystem.ai is just part of the FlashSystem and its powered by watsonx.ai*

## Natural language administration

- AI agents assist users in day-to-day administration tasks, including:
- Provisioning workloads by creating volumes, volume groups, hosts and snapshots.
- Enabling disaster recovery solutions by configuring replication and immutable snapshots.
- Conversational interactions to query and update the system configuration, such as expanding volumes, renaming objects and more.

## Natural language administration

- AI agents assist users in day-to-day administration tasks, including:
- Provisioning workloads by creating volumes, volume groups, hosts and snapshots.
- Enabling disaster recovery solutions by configuring replication and immutable snapshots.
- Conversational interactions to query and update the system configuration, such as expanding volumes, renaming objects and more.

## Enterprise-level AI safeguards

- Configuration changes performed by AI agents must always be confirmed by a human first (HITL).
- AI agents cannot perform any actions which can affect the availability of data, such as deleting system objects or performing any security-related tasks.
- Secure execution of Large Language Models using watsonx.ai.
- AI assistance is only enabled if deployed by the admin.

## Natural language administration

- AI agents assist users in day-to-day administration tasks, including:
- Provisioning workloads by creating volumes, volume groups, hosts and snapshots.
- Enabling disaster recovery solutions by configuring replication and immutable snapshots.
- Conversational interactions to query and update the system configuration, such as expanding volumes, renaming objects and more.

## Enterprise-level AI safeguards

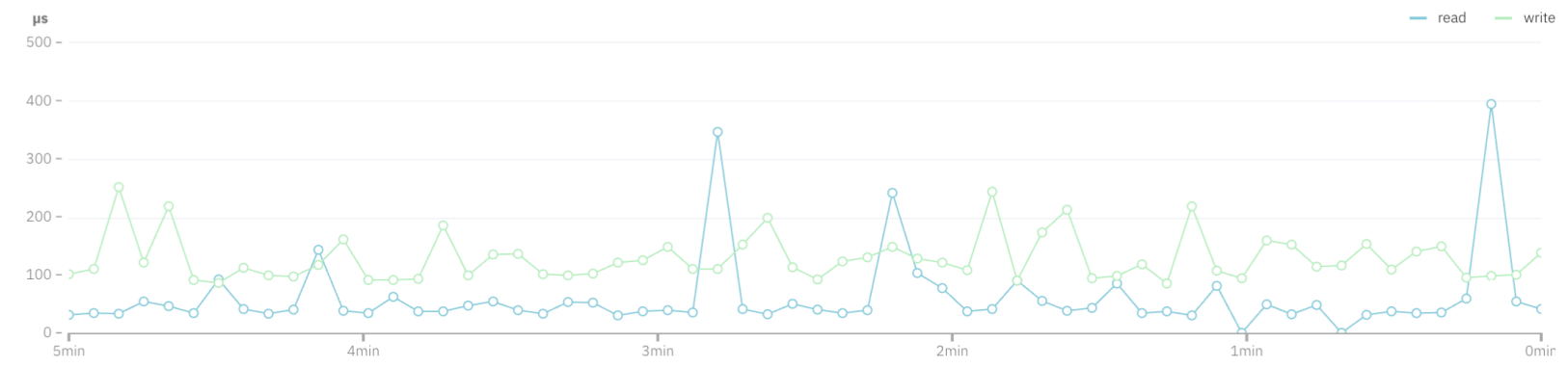
- Configuration changes performed by AI agents must always be confirmed by a human first (HITL).
- AI agents cannot perform any actions which can affect the availability of data, such as deleting system objects or performing any security-related tasks.
- Secure execution of Large Language Models using watsonx.ai.
- AI assistance is only enabled if deployed by the admin.

## Integrated with Storage Insights

- Storage Insights AI agents seamlessly integrate with on-premise agents to deliver a unified AI experience.
- Storage Insights is mandatory for FlashSystem.ai.

- FlashSystem grid
- Dashboard
- Monitoring
- Pools
- Volumes
- Hosts
- Policies
- Access
- Settings
- Storage partitions

<b>Latency</b>	read	write
138 $\mu$ s	41 $\mu$ s	138 $\mu$ s
<b>Bandwidth</b>	read	write
1 MBps	0 MBps	1 MBps
<b>IOPS</b>	read	write
65 IOPS	0 IOPS	65 IOPS
<b>CPU Utilization</b>	9 %	
<b>Power Consumption</b>	442 Watts	



**Physical capacity**

21.39 TiB Total physical capacity

Physical used: 1.94 TiB | Physical available: 19.45 TiB

**Logical capacity**

99.01 TiB Total logical capacity

Logical used: 13.45 TiB | Logical available: 85.56 TiB

**Capacity savings**

4.2:1 Data reduction (6.22 TiB)

40.2:1 Total savings (11.14 TiB)

1.6:1 Thin-provisioning (4.92 TiB)

Hardware Components

All Online

Expand

Logical Components

All Online

Expand

Connectivity Components

All Online

Expand



# Initial FlashSystem.ai Agentic capabilities

It is like benefiting from a storage admin who never sleeps.

*Outline*; inform, curate your information

- Show detailed system overview
- List volumes
- List volume groups
- List snapshot policies
- List replication policies
- List hosts
- List snapshots
- List storage pools
- List partitions and portsets
- List host-volume mappings

Zero Click Provisioning. You can ask...

*Create*; act for you – respond to request with ‘human in the loop’

- Create / Add volume
- Create / Add host
- Create / Add volume and attach to host
- Create / Add volume group with snapshot policy
- Create / Add volume group with snapshot policy safeguarded
- Create a snapshot

*Update*; act for you – respond to request with ‘human in the loop’

- Rename/resize volumes, change volume groups (Can only increase in size can't reduce)
- Modify volume group policies
- Host cluster management (create, list, map volumes)

# IBM FlashSystem.ai

powered by **watsonx.ai**

## What you can't do with FlashSystem.ai

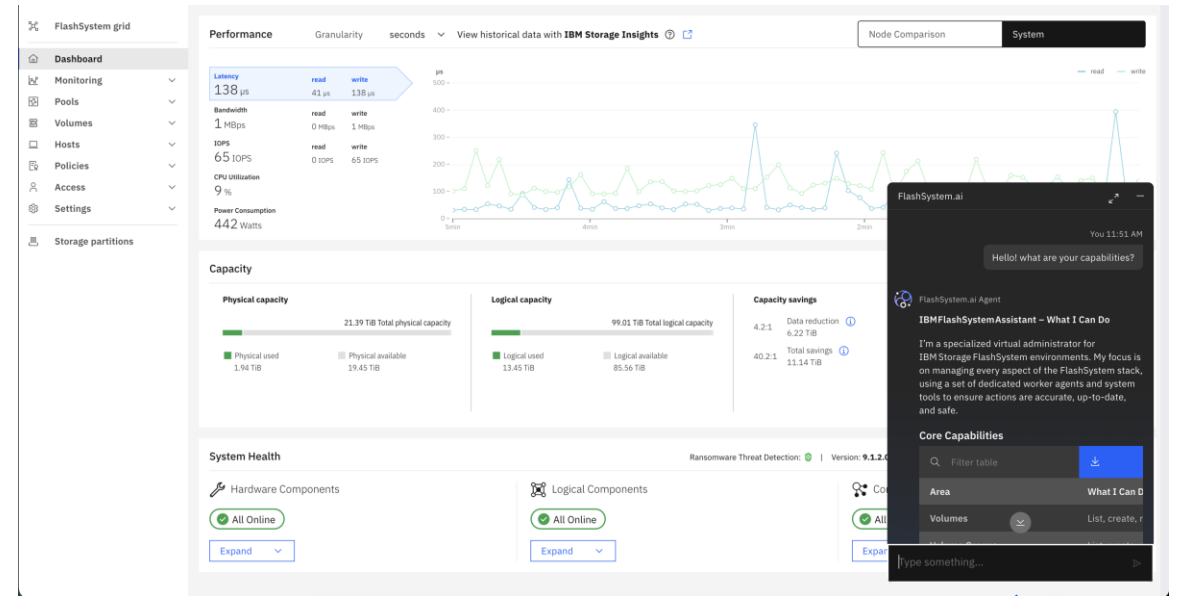
- Delete any object on the system
- Resize any object on the system to be smaller than it is.
- Carry out any configuration change without human in the loop approval
- Does not work with any FlashSystem that is below 9.1.0
- Does not work with the 5015/5045 family

## Why – remember this is based on ‘cause no harm’ first principal

- FlashSystem.ai cannot perform any actions which can affect the availability of data, such as deleting system objects or performing any security-related tasks.

## Using FlashSystem.ai

- Administrator account to take action
- Will support IBM FlashSystem 5x00 / 7x00 / 9x00 / SVC systems at the appropriate firmware level(s)
- At least 1 FlashSystem/SVC must be at 9.1.2
  - That FlashSystem hosts the FlashSystem.ai interface
  - Additional FlashSystem/SVCs can be at 9.1.0 and above (they can have Administrator or lower rights such as Monitor if no action is expected)
  - Participating FlashSystems can be stand-alone or part of an FlashSystem grid.
- There is a simplified experience for clients will be using FlashSystem.ai with a FlashSystem grid, as they are already a set of established trusted systems
- watsonx.ai subscription is not required
- *Note: Storage Insights Pro is not a pre-requisite for FlashSystem.ai, but Storage Insights connection is a requirement*

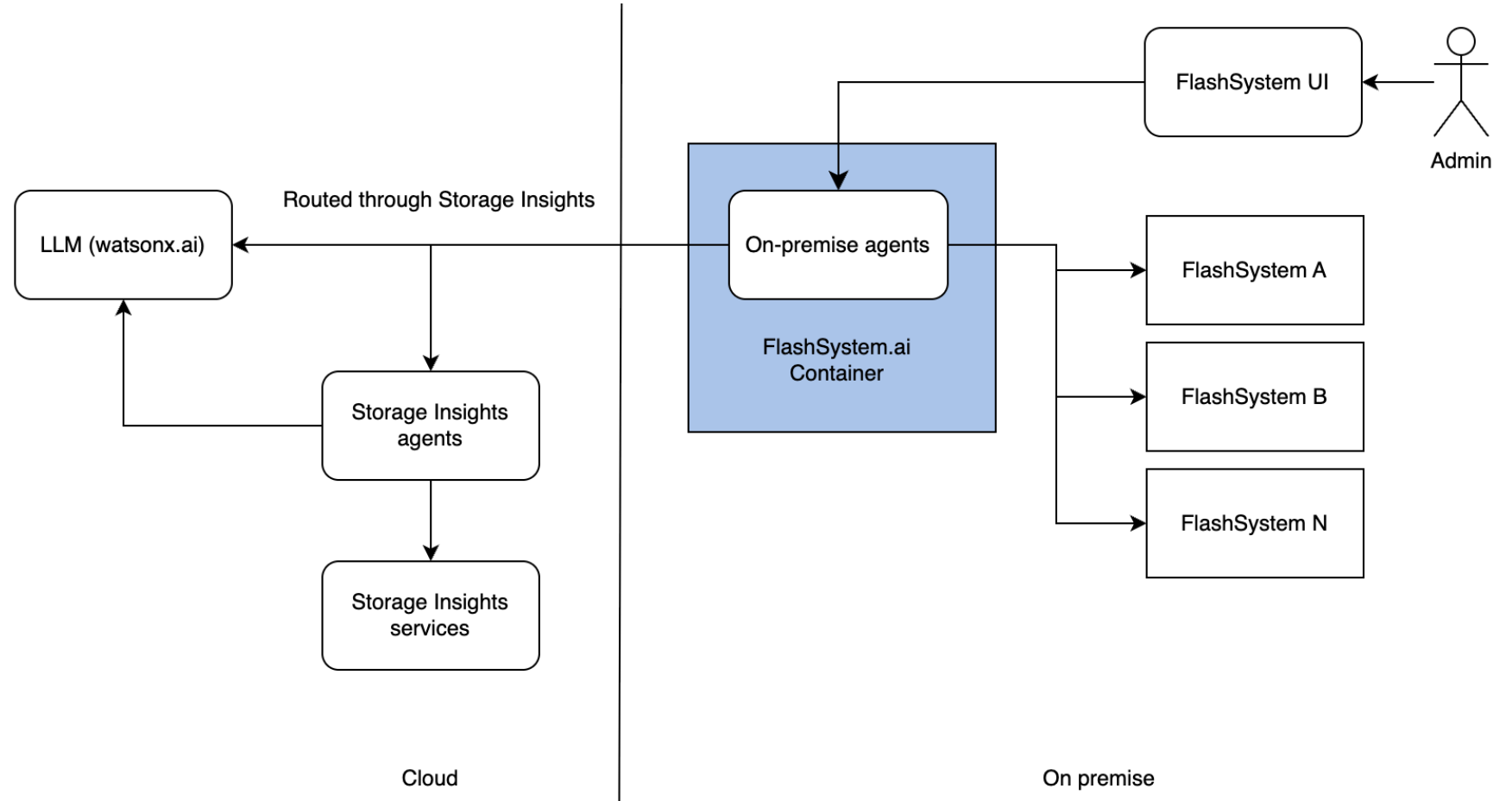


Embedded FlashSystem.ai discussion window



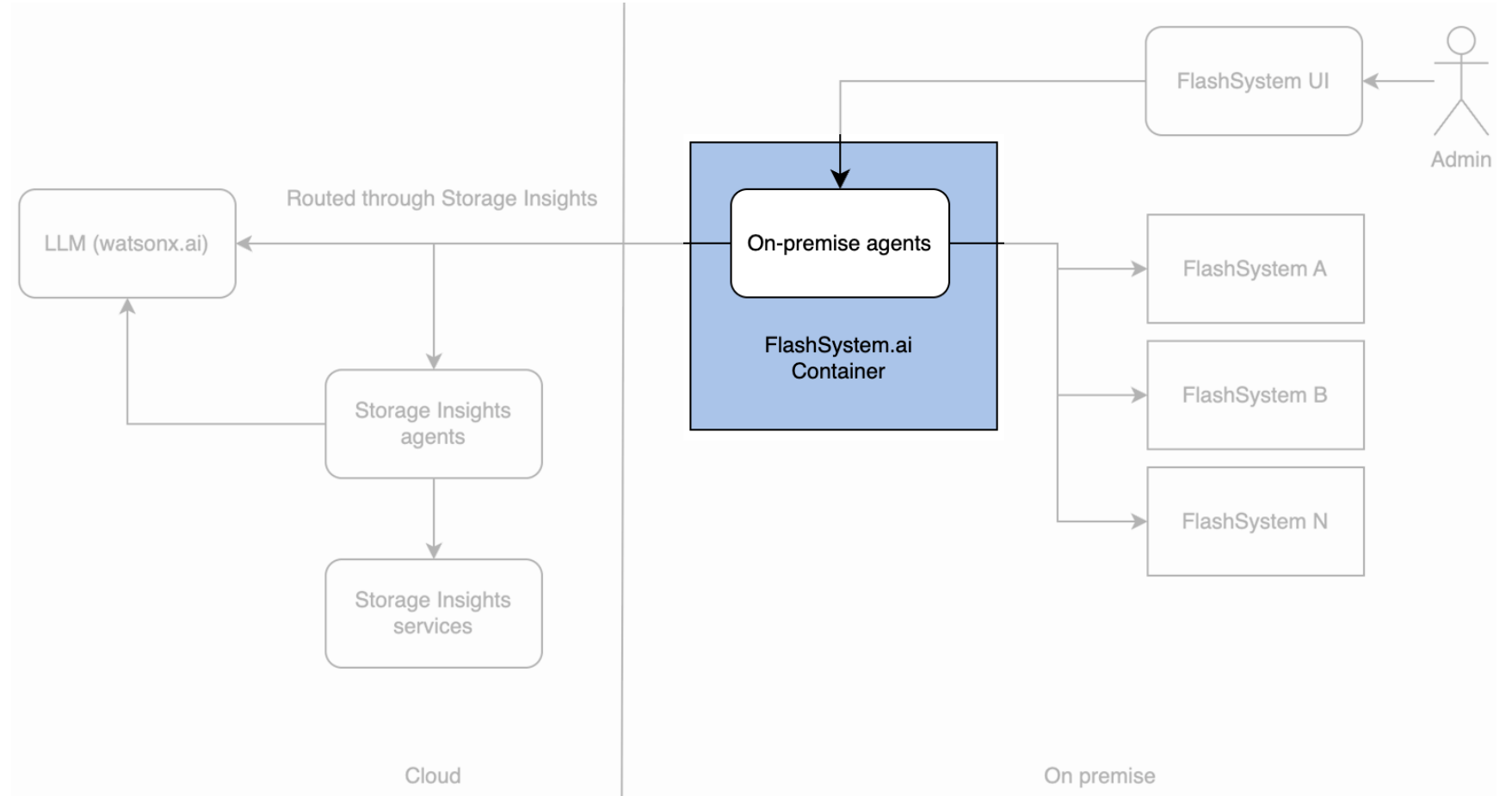
# FlashSystem.ai architecture

- A container hosted by the client provides the AI management for a FlashSystem or grid.
- No on-premise GPUs needed.
- FlashSystem must be able to reach the AI container on port 8443 (uses SSL) and the AI container must be able to access the REST API of the FlashSystem.
- The container needs outbound access to Storage Insights. Storage API key and tenant ID needed in container config file.
- A 9.1.2 PTF will be released later in 1Q that delivers FlashSystem.ai alongside the container.



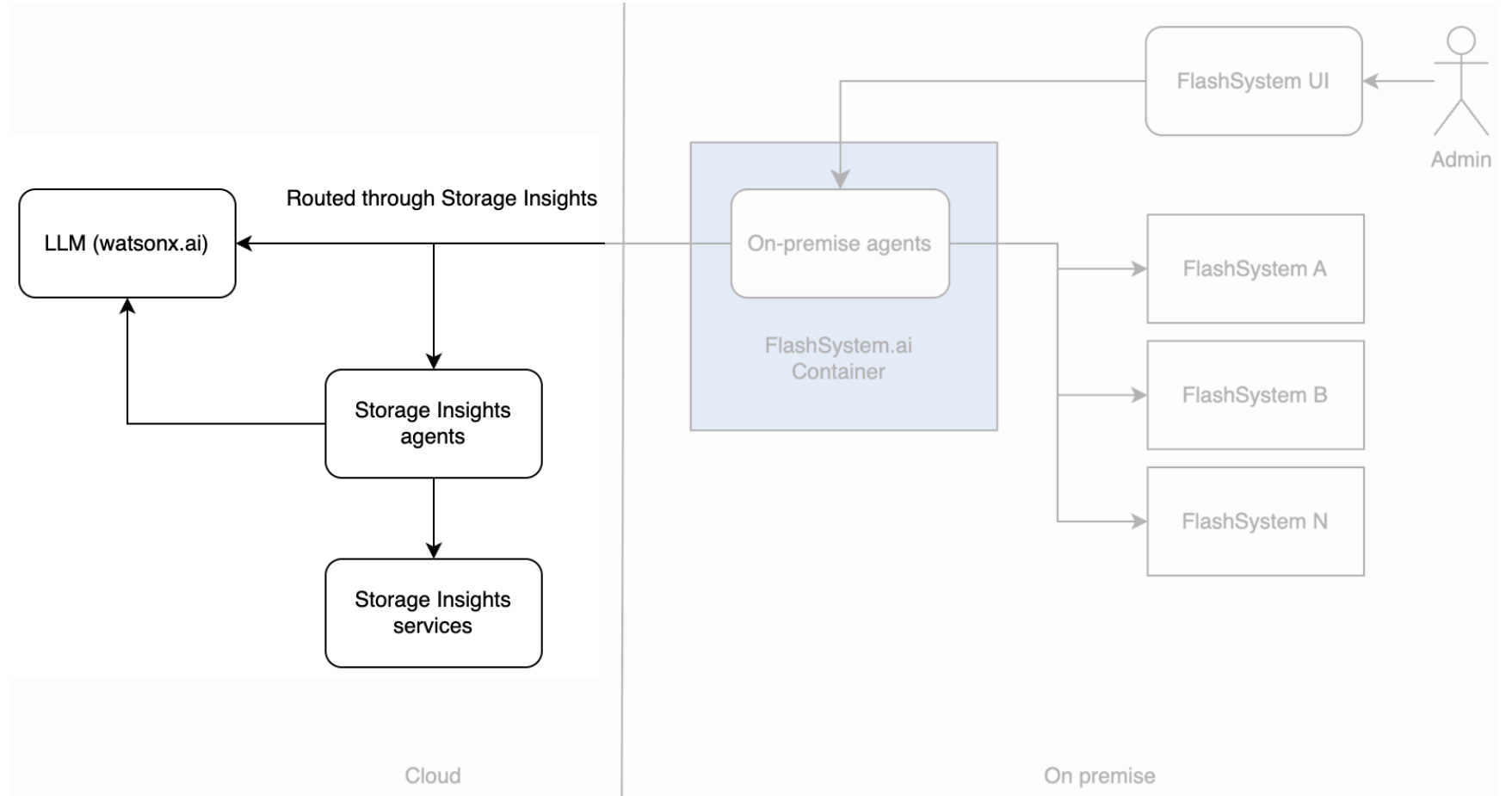
# FlashSystem.ai architecture

- All management actions are initiated from on-premise agents.
- All traffic from the container to the cloud is outbound.
- The container contains generalist (understands intent and generates plans) and specialist agents (performs actions).
- The container will be downloadable from the IBM repository in the IBM Cloud
- The container contains licensed software that is not open source, and it does not provide any APIs for integration. There is no cost to this licensed software.



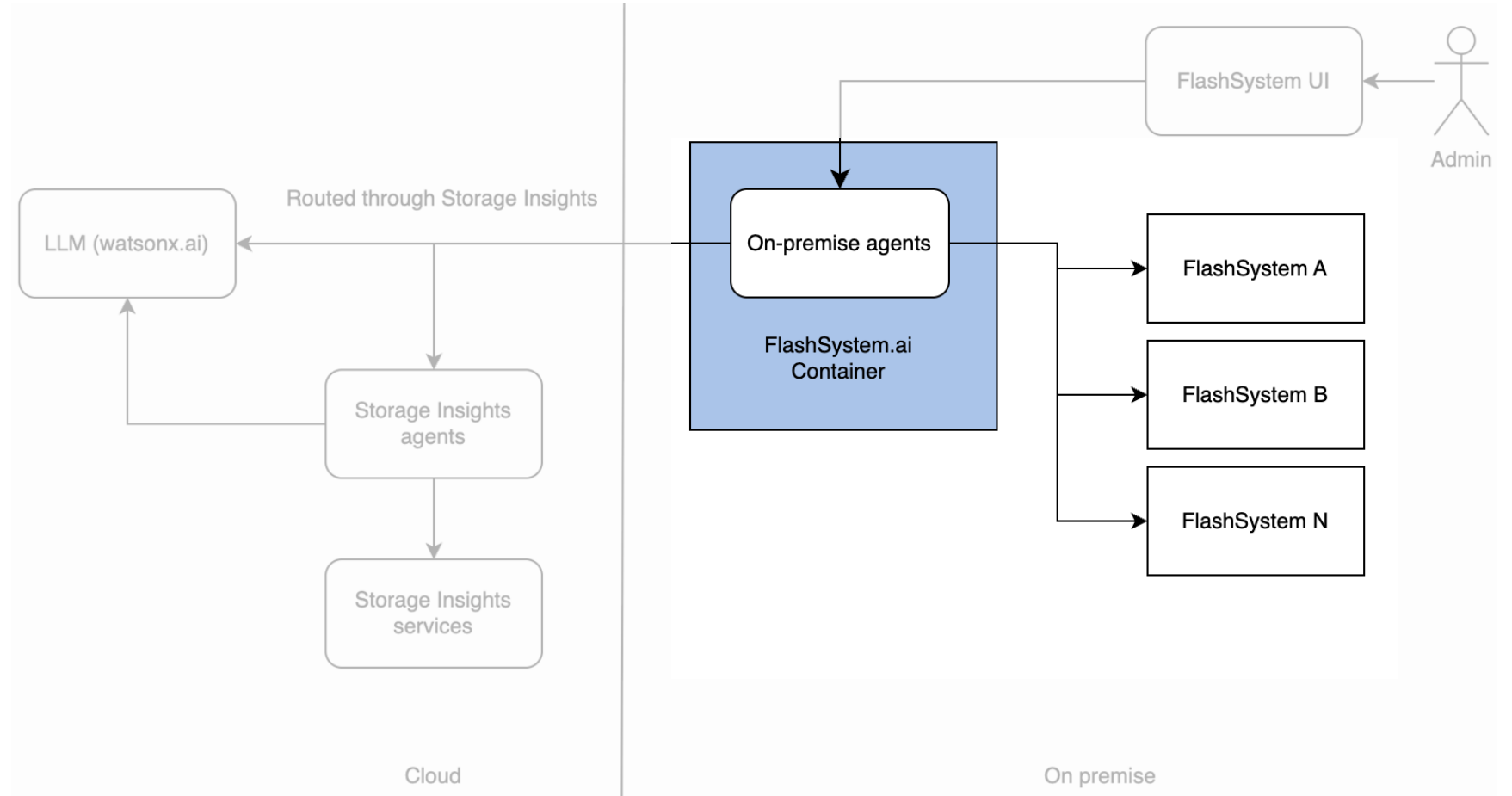
# FlashSystem.ai architecture

- Firewall rules must permit outbound traffic from the container to Storage Insights only (port 443)
- Rules to access watsonx.ai are not required as all LLM traffic is routed through Storage Insights.
- Agents in Storage Insights provide workload planning capabilities that are invoked by the on-premise agents when required.
- All LLM inferencing is performed using watsonx.ai.
- No watsonx subscription required.



# FlashSystem.ai architecture

- A single container can provide AI capabilities for multiple systems
  - One system must be at 9.1.2+
  - Other systems can be at 9.1.0.x +
- Using the same container for multiple systems establishes a level of trust between them, so logically one container is for a single FlashSystem grid
- A user account needs to be created for the container to manage the FlashSystem.
  - This should be an administrator account (not Security Admin)
- The container config file needs the details for each FlashSystem, with credentials being stored as secrets passed securely
- Product documentation contains the setup instructions





## Sign in

IBM FlashSystem.ai – Setup & Configuration

Username

Password



Sign in

# AI Container Configuration

Manage IBM storage systems available to the AI assistant.

## Storage Systems

🔍 Search

Add storage system

Name	FQDN / IP	Model	Certification type	Actions
FS9500-2	192.168.61.115	IBM FlashSystem 9500	Self signed	⋮
FS9200-2	192.168.67.74	IBM FlashSystem 9200	Self signed	⋮
FS7300-3	192.168.61.127	IBM FlashSystem 7300	Self signed	⋮
FS7300-TestDrive	192.168.61.181	IBM FlashSystem 7300	Self signed	⋮
FS7300-4	192.168.61.133	IBM FlashSystem 7300	Self signed	⋮
FS7300-2	192.168.61.184	IBM FlashSystem 7300	Self signed	⋮

**STORAGE INSIGHTS**

Tenant ID

01ebca18-3c06-13e0-90a1-9898a4077754

The IBM Storage Insights tenant identifier for this deployment.

API Key

Leave blank to keep existing key 

Currently configured — enter a new value to replace it, or leave blank to keep the existing key.

**GUI CONNECTION**

GUI Connection Key

e76814f1-c6ff-4974-8724-92810f9a586c [Regenerate](#)

Used to authenticate the GUI. Automatically generated and persisted — click Regenerate only if you need to rotate the key.

Save

```
IBM_FlashSystem:FS9500-2:byrongro>lsaicontainerinfo
container_key e76814f1-c6ff-4974-8724-92810f9a586c
container_url flash-ai.apps.sds1.sdi.dmz:443
IBM_FlashSystem:FS9500-2:byrongro>
```

# FlashSystem.ai, *for free*, with every FlashSystem.

IBM Storage Insights Pro can be acquired through:

- IBM Storage Intelligence Control
- Expert Care premium

FlashSystem.ai	IBM Storage Insights (Foundation / Free)	Storage Insights Pro
Natural language management	Yes	Yes
Requests per month	Limited <sup>2</sup>	Unlimited <sup>2</sup>
Autonomous Operations <sup>1</sup>	No	Yes
Proactive actionable insights <sup>1</sup>	No	Yes

# Thank YOU! Tell Us How We Did!

---



- <https://ibm.biz/Bdpcj3>

# IBM Storage Virtualize FlashSystem.ai Demo

