



IBM Software Group

IBM WebSphere® Data Interchange V3.3

Envelope Overrides



@business on demand.

© 2007 IBM Corporation

This presentation will review Electronic Data Interchange (EDI) Envelope Overrides

Goals

- Describe envelope profiles
- Discuss default envelope profiles
- Associate envelope profiles to maps
- Understand the hierarchy of envelope attributes
- Learn differences in WebSphere Data Interchange (WDI) 3.3 release
- Summary



The presentation will describe Envelope profiles and how to connect them to your maps. We will also review the hierarchy used to determine the values for EDI Envelopes and the differences in the WebSphere Data Interchange (WDI) 3.3 release.

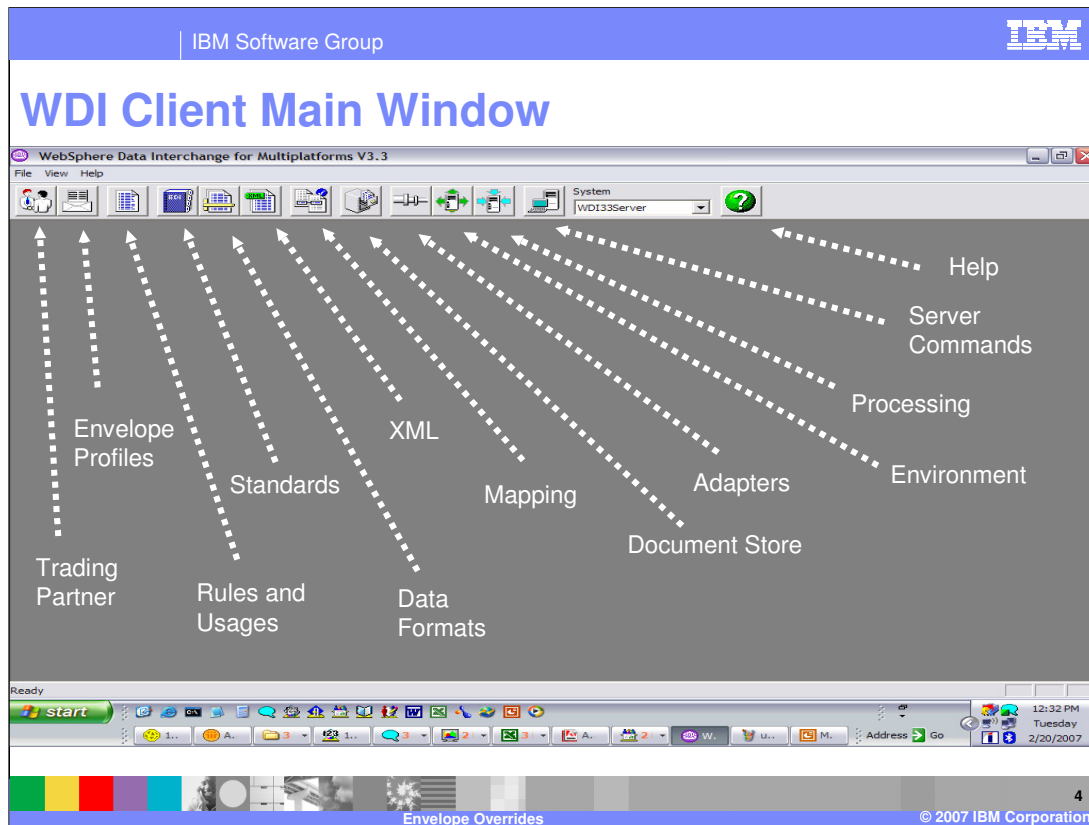
What is an envelope profile?

- Used to provide specific default values for envelope attributes
- The default values are constants.
- Envelope profiles names
 - ▶ E
 - ▶ I
 - ▶ T
 - ▶ U
 - ▶ X



The Envelope profiles have one field for each element in the envelope standard that is not automatically generated. The profiles provide literal or constant data for building header or trailer segments for transaction sets, messages, functional groups, and interchanges. You supply only the values that need to be populated and for which a value is not provided by another source.

Each Envelope profile has a name and a description.



This is the main window of WDI Client. This is a standard Windows screen configuration with the addition of the WDI navigation bar. Envelope profiles are located in the Envelope Profiles functional area.

What attributes are found in envelope profiles?

- Envelope profile attributes come from elements found in the envelope standard.
- For an X12 ISA, the attributes would be ISA01, ISA02, ISA03, etc.
- For an EDIFACT UNG, the attributes would be UNG01, UNG0201, UNG0202, etc.



Envelope profile attributes represent the data elements in the envelope standard. The field names are designed to make cross referencing easy. For example, the field UNG0202 refers to UNG segment, compound element 2, sub-element 2.

Default Envelope Profiles

- Default envelope profile names match the EDI standard IDs
- For example, the EDIFACT standard EDI96A
 - ▶ E Envelope profile named EDI96A
- WDI 3.2, default envelope profiles included in the standard import files



A default envelope profile should be created within the appropriate envelope profile type for each EDI standard maintained in the system. Default envelope profile names match the EDI standard IDs. For example, the EDIFACT standard EDI96A should have a corresponding E Envelope profile named EDI96A. With the release of 3.2, default envelope profiles were included in the standard import files

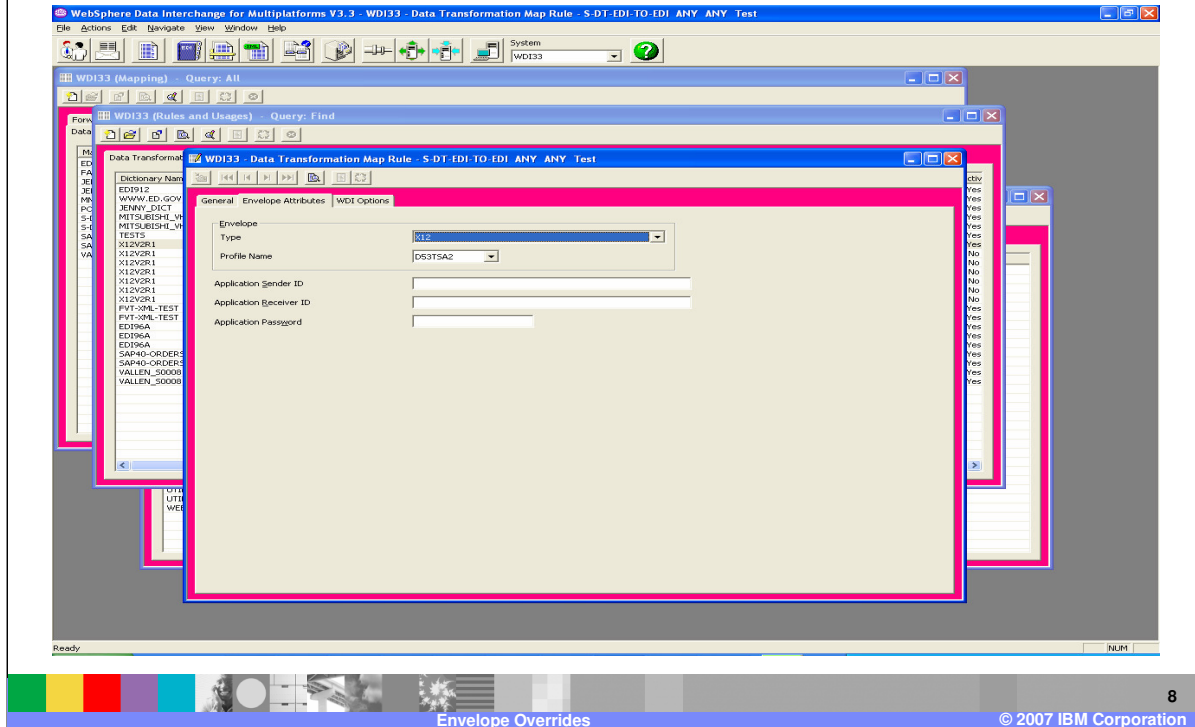
Associate Envelope Profiles to Maps

- Not required to match an EDI standard ID
- Use these names on Rules and Usages to
- Overrides the default profile name
- Select the Envelope Type and Profile Name



You can also add profiles with names that do not match an EDI standard ID, and then use these names when creating Rules and Usages to override the default profile.

Example – Envelope Profile in Rule



Envelope profiles are used by adding them to the Envelope Attributes tab of the Rules and Usages. Select the Envelope Type and Profile Name.

Hierarchy of Envelope Attributes

- Envelope generation
 - ▶ WDI follows a hierarchy to determine what value to use for each attribute or element of the envelope
- The hierarchy (possible exceptions like GS08)
 - ▶ Special handling: date, time, count
 - ▶ Specific property value: ISA01, UNB0101, EG01
 - ▶ Generic property value: lchgSndrQl , lchgSndrld
 - ▶ Envelope profile



When generating an envelope, WDI follows a hierarchy to determine what value to use for each attribute or element of the envelope. The order in which WDI searches for values or generates values is special elements like date, time, counts, and control numbers. Specific target document properties used during mapping for example ISA01 and UNB0101. Generic target document properties used during mapping like lchgSndrQl for Interchange Sender Qualifier. And finally the constant values in the Envelope profile. There are exceptions to this order for example GS08 which is the version, release, and responsible agency code.

What's new?

- More information about each field
 - ▶ UNB0302 (Receiver ID Qualifier)
- Named according to the EDI Standard
 - ▶ UNG0202 rather than UNG03
- New EDI standard envelope fields
- Includes only fields that WDI Server will use a value from



All Envelope Profile Editors include EDI standard envelope fields. The elements correspond to the EDI standard. Each profile includes only the fields that the Server will use to provide a constant value.

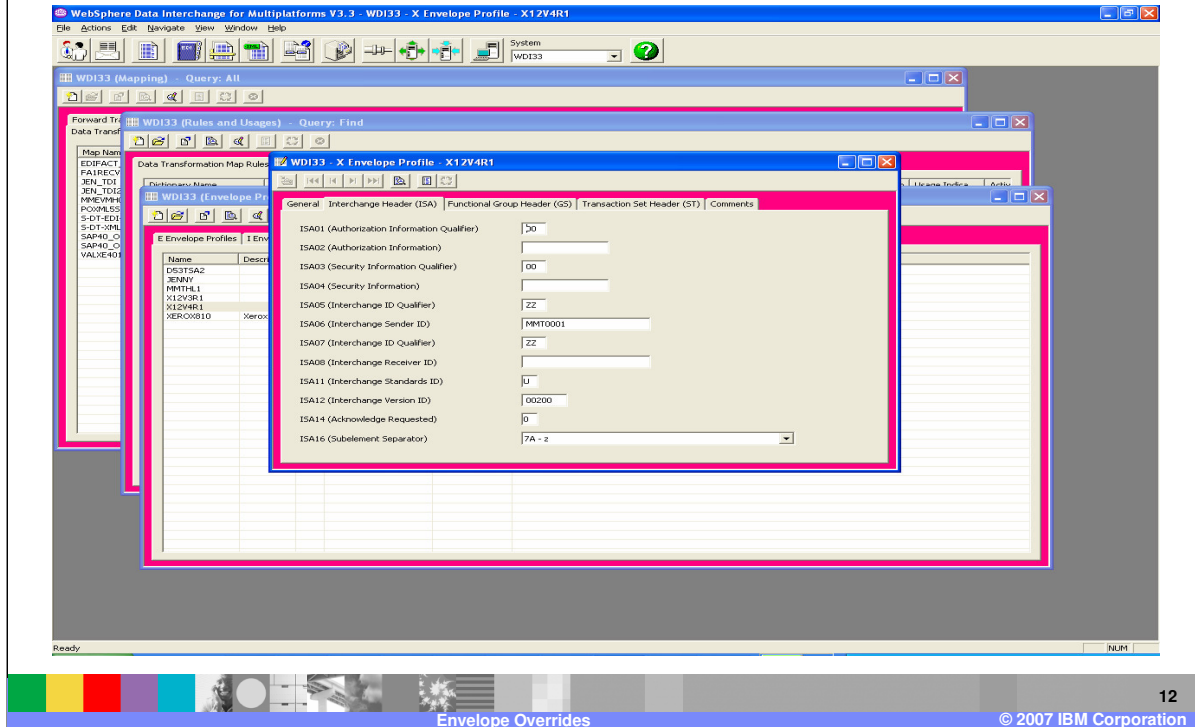
New EDI Standard Envelope Fields

- ST03
- UNB0103, UNB0104, UNB0105
- UNB0204
- UNB0304
- UNH0206, UNH0207
- UNH0501, UNH0502, UNH0503, UNH0504
- UNH0601, UNH0602, UNH0603, UNH0604
- UNH0701, UNH0702, UNH0703, UNH0704



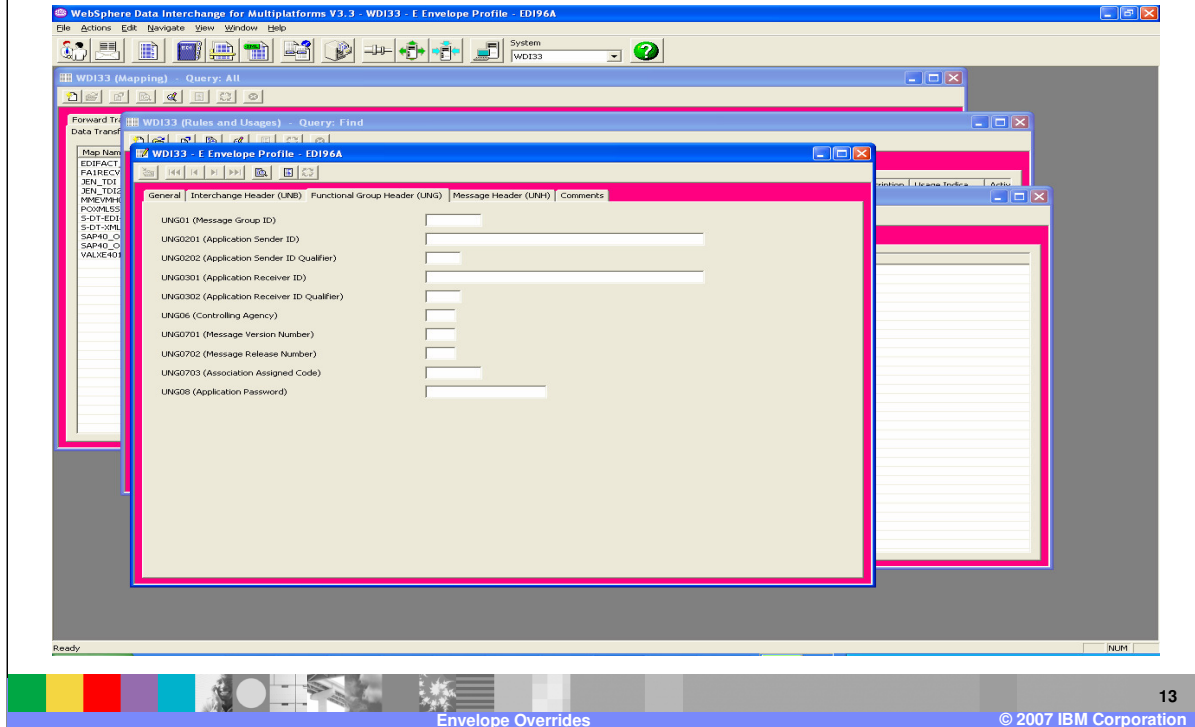
This is a list of some Envelope fields that were added with WDI version 3.3.

Example - X12 Envelope Profile Fields



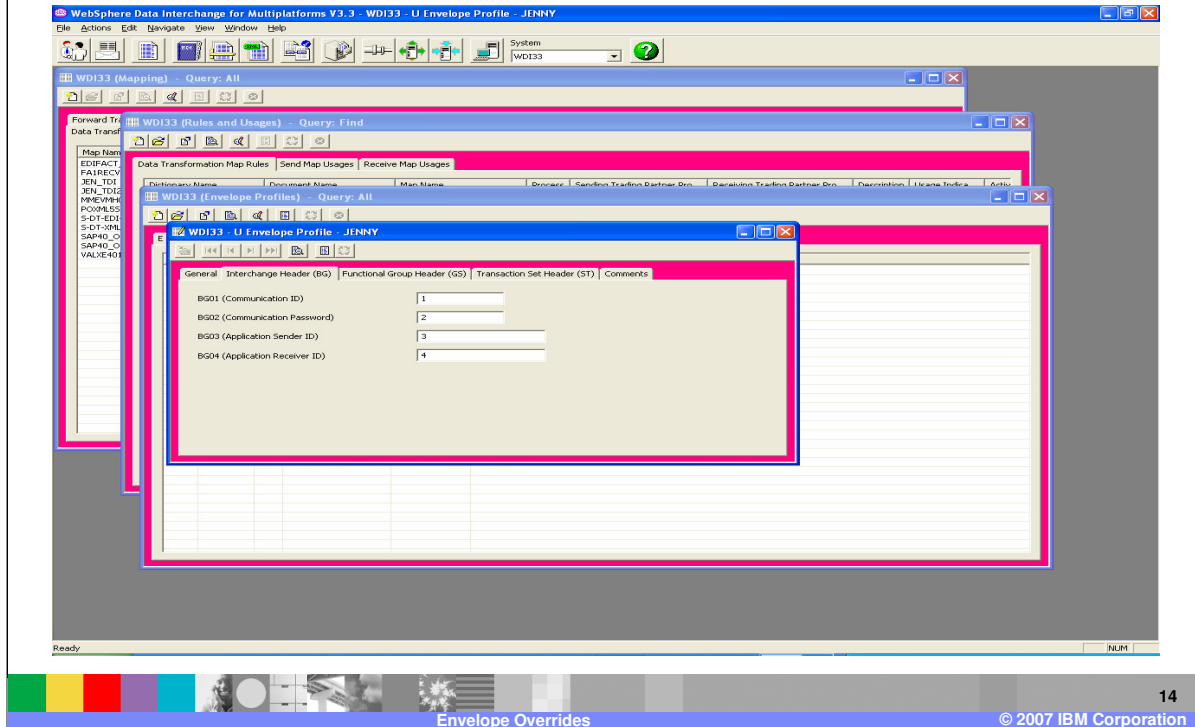
This is an example of the X12 Envelope Profile editor and the Interchange Header tab. This tab is used to provide values for the ISA service segment.

Example - EDIFACT Envelope Profile Fields



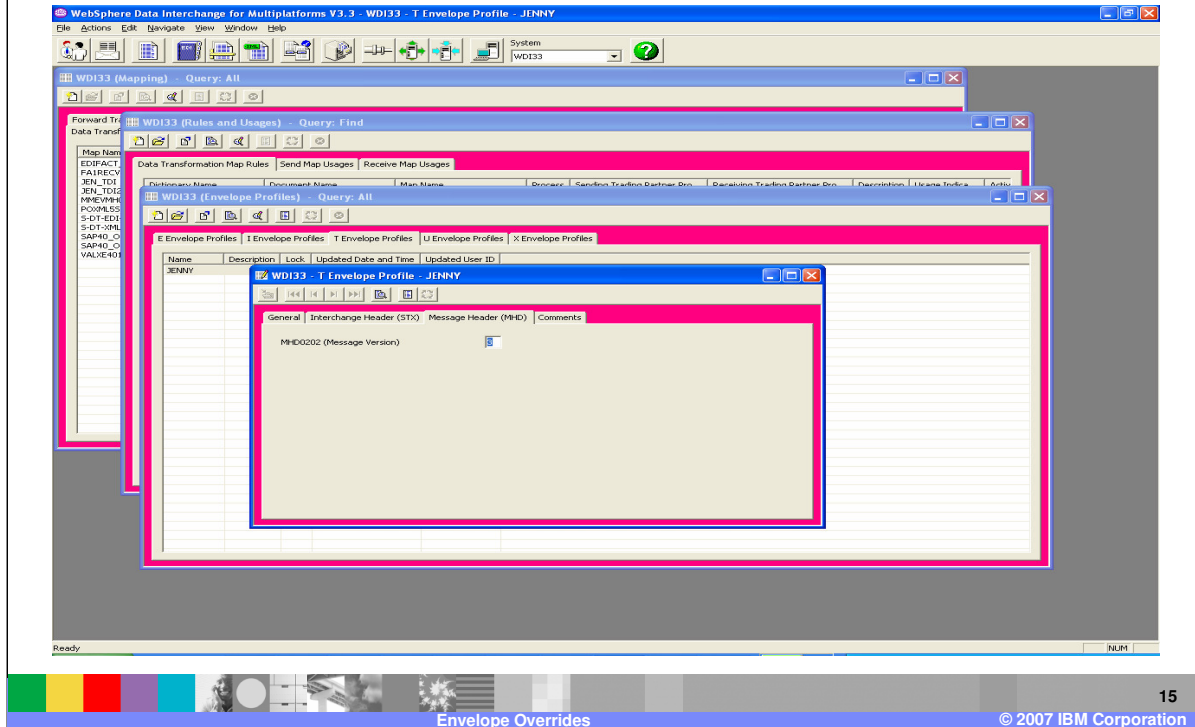
This is an example of the EDIFACT Envelope Profile editor and the Functional Group Header tab. This tab is used to provide values for the UNG service segment.

Example - UCS Envelope Profile Fields



This is an example of the UCS Envelope Profile editor and the Interchange Header tab. This tab is used to provide values for the BG service segment.

Example - UNTDI Envelope Profile Fields



This is an example of the UNTDI Envelope Profile editor and the Message Header tab. This tab is used to provide values for the MHD service segment.

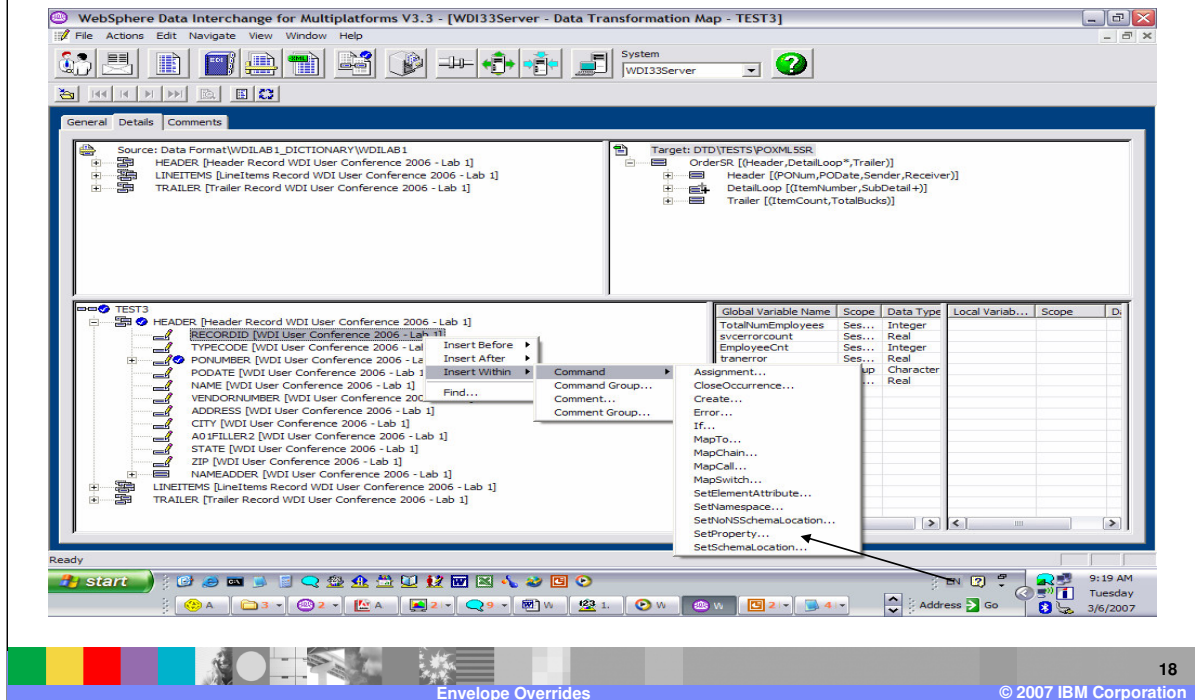
Using Document Properties

- SetProperty (propertyName, propertyValue)
- Used to set a special processing property of the target message
- propertyName is a predefined list.
- propertyValue can use functions to return the value for the property



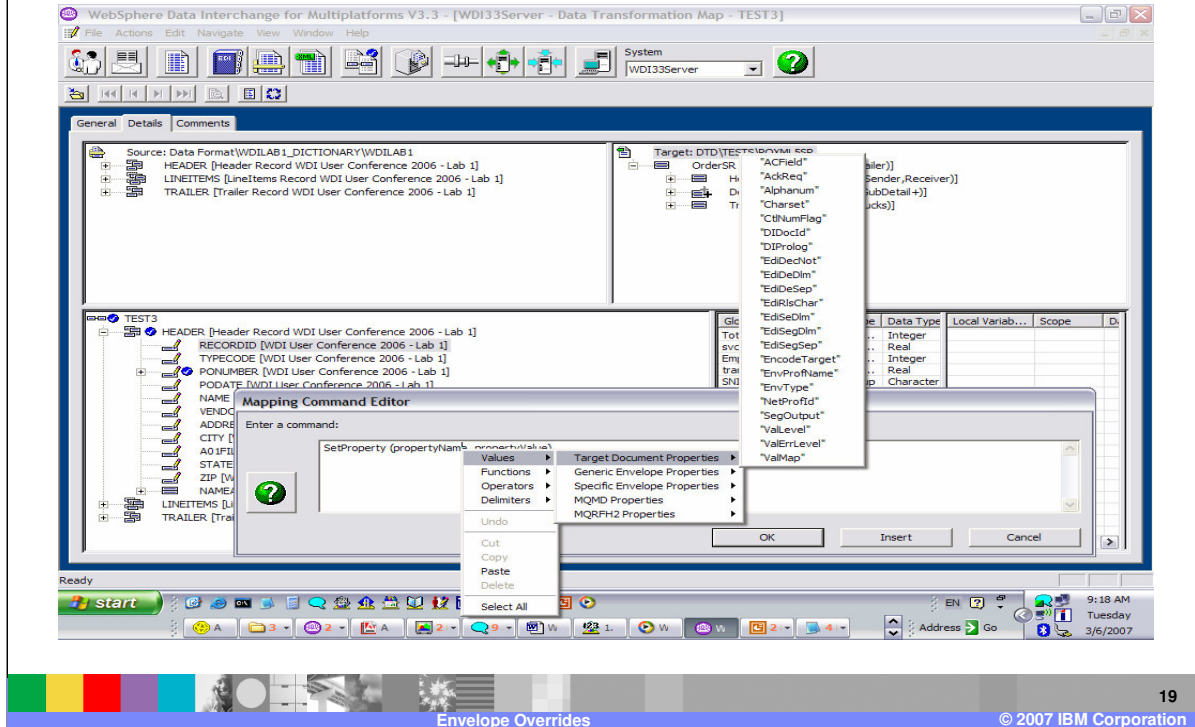
The SetProperty command can be used to set properties to control processing and override values for the target message. The propertyValue argument can use functions to set the value for the property.

Using Document Properties



To select the SetProperty command, right click on an element in the mapping window, choose where to insert the command, select Command, and select SetProperty.

Using Document Properties



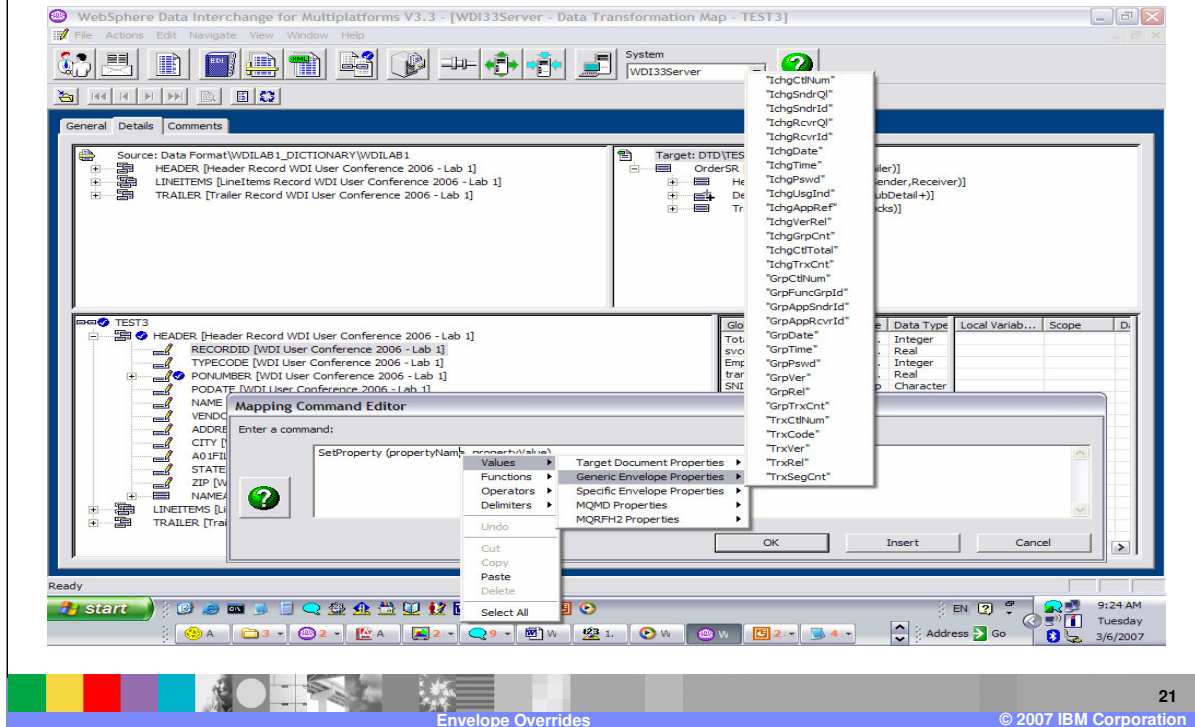
Target document properties include the application control field, EDI delimiters, and the code page for the target message.

Using Document Properties

The screenshot displays the IBM WebSphere Data Interchange for Multiplatforms V3.3.3 interface. The main window shows a mapping configuration for a Data Transformation Map named 'TEST3'. The source is 'Data Format [WDILAB1_DICTIONARY [WDILAB1]]' and the target is 'DTD [VESTS\POXMLSSR]'. The source tree includes 'HEADER [Header Record WDI User Conference 2006 - Lab 1]', 'LINEITEMS [LineItems Record WDI User Conference 2006 - Lab 1]', and 'TRAILER [Trailer Record WDI User Conference 2006 - Lab 1]'. The target tree includes 'OrdersSR [(Header,DetailLoop*,Trailer)]', 'Header [(PONum,PODate,Sender,Receiver)]', 'DetailLoop [(ItemNumber,SubDetail*)]', and 'Trailer [(ItemCount,TotalBucks)]'. The 'Mapping Command Editor' dialog is open, showing a 'SetProperty' command: SetProperty (propertyName: senderid, value: 'ISAnn' ('nn' is 01-16)). A context menu is open over the 'value' field, showing options like 'Values', 'Functions', 'Operators', 'Delimiters', 'Undo', 'Cut', 'Copy', 'Paste', and 'Delete'. The 'Values' option is expanded, showing a list of document properties such as 'ISAnn', 'GSnn', 'STnn', 'SEnn', 'IEAnn', 'UNBnn', 'UNGnn', 'UNHnn', 'UNTnn', 'UNEnn', 'LINZnn', 'BGnn', 'EGnn', 'STXnn', and 'MHDnn'. The background shows a table for defining document properties with columns for 'Property Name', 'Local Variable', and 'Scope'.

Specific envelope properties also include values that would be found in an EDI target document for example the interchange sender and receiver id and qualifier, group version, and transaction control number but use the segment name, element, and sub-element number to set a specific value. These will override constant values in the Envelope Profile.

Using Document Properties



Generic envelope properties include values that would be found in an EDI target document for example the interchange sender and receiver id and qualifier, group version, and transaction control number. Not all properties listed can be used to override values. Properties that are available in the Envelope Profile can be used to override values. Setting these properties will override specific envelope properties and constant values in the Envelope Profile.

Summary

- Provide default values for the envelope segments
- Default envelope profiles are provided with the EDI standard
- Custom envelope profiles can be created and added to the Rules and Usages
- WDI follows a hierarchy to determine which value is used in the envelope
- Several new envelope fields were added in the new release



Envelope profiles are used to provide default values for the envelope segments. Default envelope profiles are provided with the EDI standard. Different envelope profiles can be created and added to the Rules and Usages. WDI follows a hierarchy to determine which value is used in the envelope. Several new envelope fields were added in the WDI version 3.3 release.

Trademarks, copyrights, and disclaimers

The following terms are trademarks or registered trademarks of International Business Machines Corporation in the United States, other countries, or both:

IBM	CICS	IMS	WMO	Tivoli
IBM (logo)	Cloudscape	Informix	OS/390	WebSphere
ef (logo)/business	DB2	iSeries	OS/400	xSeries
AIX	DB2 Universal Database	Lotus	pSeries	zSeries

Java and all Java-based trademarks are trademarks of Sun Microsystems, Inc. in the United States, other countries, or both.

Microsoft, Windows, Windows NT, and the Windows logo are registered trademarks of Microsoft Corporation in the United States, other countries, or both.

Intel, ActionMedia, LANDesk, MMX, Pentium and ProShare are trademarks of Intel Corporation in the United States, other countries, or both.

UNIX is a registered trademark of The Open Group in the United States and other countries.

Linux is a registered trademark of Linus Torvalds.

Other company, product and service names may be trademarks or service marks of others.

Product data has been reviewed for accuracy as of the date of initial publication. Product data is subject to change without notice. This document could include technical inaccuracies or typographical errors. IBM may make improvements and/or changes in the product(s) and/or program(s) described herein at any time without notice. Any statements regarding IBM's future direction and intent are subject to change or withdrawal without notice, and represent goals and objectives only. References in this document to IBM products, programs, or services does not imply that IBM intends to make such products, programs or services available in all countries in which IBM operates or does business. Any reference to an IBM Program Product in this document is not intended to state or imply that only that program product may be used. Any functionally equivalent program, that does not infringe IBM's intellectual property rights, may be used instead.

Information is provided "AS IS" without warranty of any kind. THE INFORMATION PROVIDED IN THIS DOCUMENT IS DISTRIBUTED "AS IS" WITHOUT ANY WARRANTY, EITHER EXPRESS OR IMPLIED. IBM EXPRESSLY DISCLAIMS ANY WARRANTIES OF MERCHANTABILITY, FITNESS FOR A PARTICULAR PURPOSE OR NONINFRINGEMENT. IBM shall have no responsibility to update this information. IBM products are warranted, if at all, according to the terms and conditions of the agreements (e.g., IBM Customer Agreement, Statement of Limited Warranty, International Program License Agreement, etc.) under which they are provided. Information concerning non-IBM products was obtained from the suppliers of those products, their published announcements or other publicly available sources. IBM has not tested those products in connection with this publication and cannot confirm the accuracy of performance, compatibility or any other claims related to non-IBM products. IBM makes no representations or warranties, express or implied, regarding non-IBM products and services.

The provision of the information contained herein is not intended to, and does not, grant any right or license under any IBM patents or copyrights. Inquiries regarding patent or copyright licenses should be made, in writing, to:

IBM Director of Licensing
IBM Corporation
North Castle Drive
Armonk, NY 10504-1785
U.S.A.

Performance is based on measurements and projections using standard IBM benchmarks in a controlled environment. All customer examples described are presented as illustrations of how those customers have used IBM products and the results they may have achieved. The actual throughput or performance that any user will experience will vary depending upon considerations such as the amount of multiprogramming in the user's job stream, the I/O configuration, the storage configuration, and the workload processed. Therefore, no assurance can be given that an individual user will achieve throughput or performance improvements equivalent to the ratios stated here.

© Copyright International Business Machines Corporation 2006. All rights reserved.

Note to U.S. Government Users - Documentation related to restricted rights-Use, duplication or disclosure is subject to restrictions set forth in GSA ADP Schedule Contract and IBM Corp.



Envelope Overrides

23

© 2007 IBM Corporation