



IBM Portal Excellence Conference 2009

Dubai, UAE - Nov 2nd, 2009



WebSphere Portal 6.1 JumpStart

Mohamed Emad El-Din

Architect, Portal and Collaborations

IBM SWG, Middle East and North Africa



Speaker Introduction

- **Mohamed Emad El-Din Hussien**
- IBM WebSphere Portal and collaboration architect
- Software group, IBM Middle East and North Africa
- Email – **emad@ae.ibm.com**



Session Disclaimer

- This is a Portal 101 Overview, not a technical deep dive
- Know what is there, ask the right questions
- Most topics will be covered in more depth throughout the day



Agenda

- Basics & Business Benefits of WebSphere Portal
- WebSphere Portal Architecture and Components
- Installation and Administration
- Integration Approach
- Portlet Development and Standards Support
- Portal Features
- Additional Information and Resources
- Q & A



Agenda

- ✓ **Basics & Business Benefits of WebSphere Portal**
 - WebSphere Portal Architecture and Components
 - Installation and Administration
 - Integration Approach
 - Portlet Development and Standards Support
 - Portal Features
 - Additional Information and Resources
 - Q & A



What is a Portal

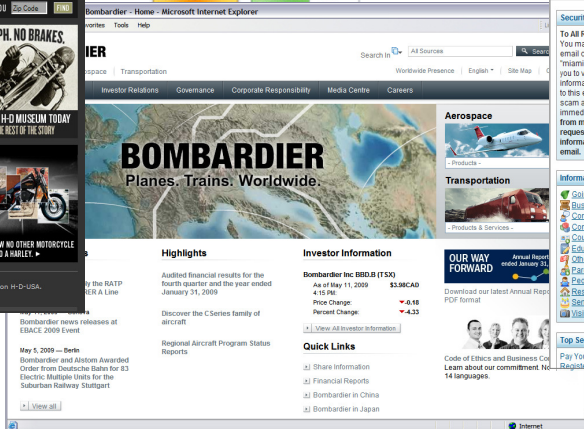
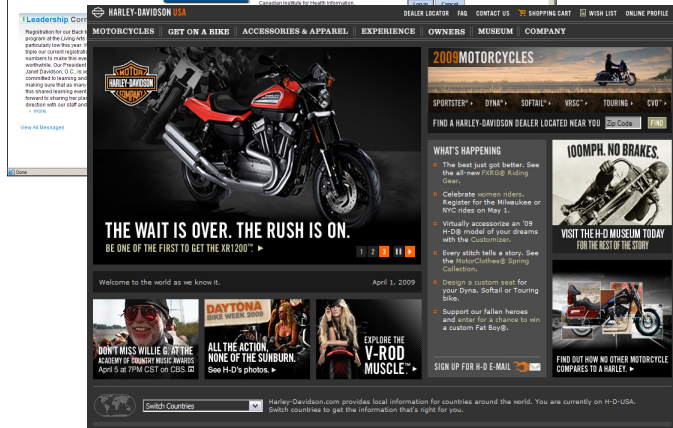
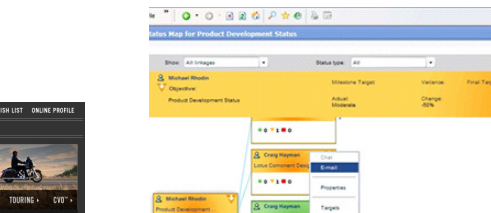
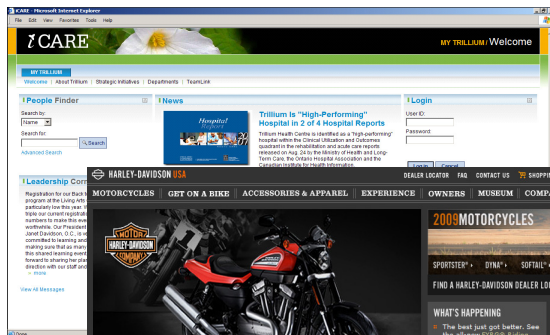
A portal is a single point of personalized interaction with the applications, content and processes, for the user





Exceptional Web Experiences One Platform Many Different Business Needs

*Employee and Manager
Self Service*

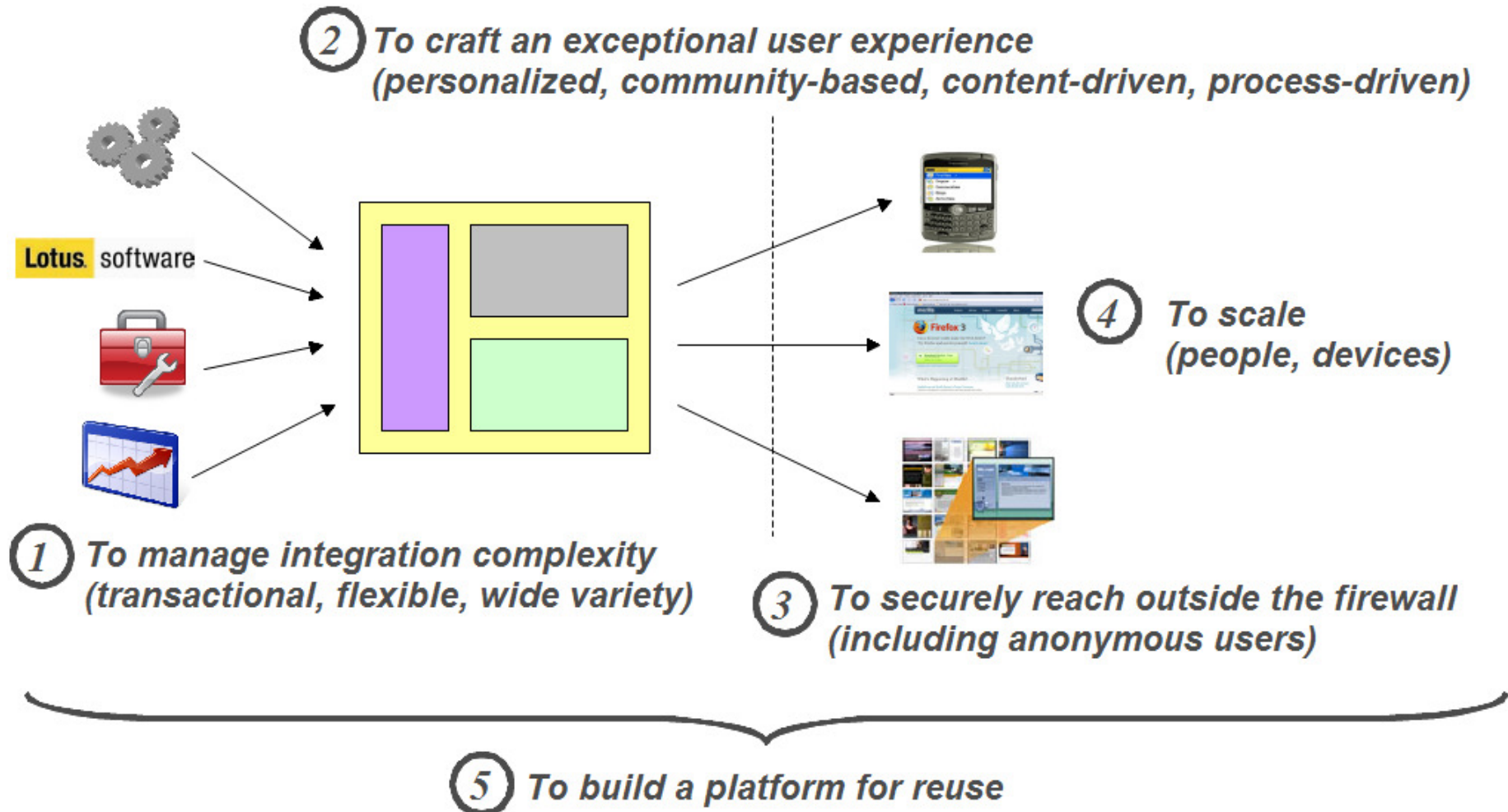


Partners

Customer Experience



Why do business bring portals into the picture?



WebSphere Portal: The Front End of SOA

Portlets are the natural way for users interacting and understanding enterprise “Services” Portlets are user facing business services

Order Inventory		
Orders for July		
Order_ID	Customer_ID	Status
072001000000	3542877	DELAYED
072001000001	3542877	ON_TIME
072001000002	5728883	ON_TIME
072001000003	8288473	ON_TIME

Enter month:



Order Inventory Service

Service can be a single service or composite service.



Lufthansa.com offers a personalized experienced for Lufthansa customers all over the world



80 country sites in 12 languages

Italiano Deutsch
Español Русский
? 体中文 日本語

Portugués 繁体
Français Polski
한국어 English

中文

Every day bookings to the amount of 2 million Euros are sold via lufthansa.com

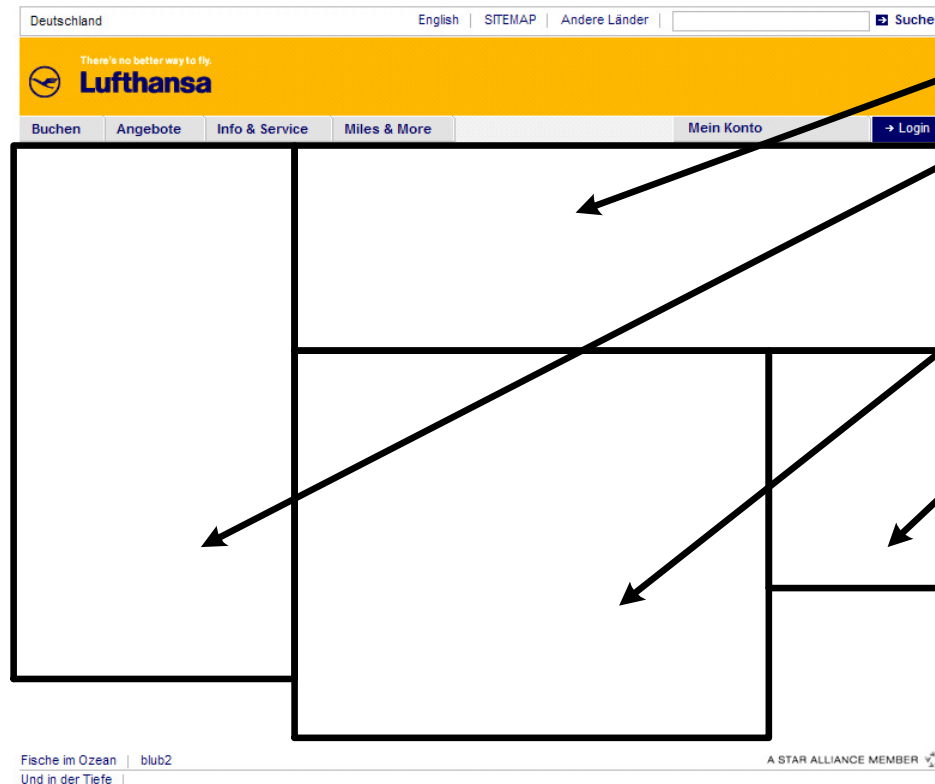
Key Facts of www.lufthansa.com

- 2.642.535 bookings / plus 32% in 2007
 - 2.328.091 Standard-Booking
 - 314.444 Award-Booking
- In October `08 the total booking entries already exceeded the booking entries of 2007.
- 1,1 Billion pageviews in 2007
- Average of 35 page views per second (September 2008)
 - > Within an outage of one minute 2000 visitors will be rejected.



Lufthansa.com is based on a modular portal architecture with reusable portlets at its heart

➔ The Lufthansa.com portlet catalog is an **ever-growing list of functional modules** that can be placed on any portal page in any of the featured portal sites as needed:



- Kosa-Passinglane-portal
- Kosa-AdditionalPassinglane-portal
- Kosa-Email-portal
- Kosa-OldFlightManager-portal
- Kosa-KeyVisual-portal
- Kosa-Subnavigation-portal
- Kosa-Flightmanager-portal
- Kosa-Booking-portal
- Kosa-Award-portal
- Kosa-Bookinglist-portal
- Kosa-ProfileUpdate-portal
- Kosa-Content-portal
- Kosa-LoginIndirect-portal
- Kosa-LoginDirect-portal
- Kosa-ForgottenPassword-portal
- Kosa-MemberGetsMember-portal
- Kosa-Quicklinks-portal
- Kosa-Enrollment-portal
- Kosa-MamAccount-portal
- Kosa-ForgottenPin-portal
- Kosa-ChangePassword-portal
- Kosa-CheckIn-portal
- Kosa-ChangePin-portal
- Kosa-UserInfo-portal
- Kosa-LoginBox-portal
- Kosa-ArrivalDeparture-portal
- Kosa-TimeTable-portal
- Kosa-MAMSearch-portal
- Kosa-BuyMiles-portal
- Kosa-LHResSearch-portal
- Kosa-LoungeSearch-portal
- Kosa-OfficeSearch-portal
- Kosa-TechSupSearch-portal
- Kosa-TickTeamSearch-portal
- Kosa-Feedback_TS-portal

HSBC: Crafting an Exceptional User Experience



Banners using customer data held in the back-end

Mr Bannister,
you can protect your family with our affordable term life plan
[find out how](#)



Under Pressure?
With your own Relationship Manager, sorting out your finances is fast and convenient. So you can make the most of your free time
[Learn more](#)



Mr Parsons, you're important to us so we'd like to offer you your own Relationship Manager
[Learn more about Premier](#)



Mr Hicks, if you upgrade to Premier you'll benefit from the advice and insight of your own Relationship Manager
[Learn more about Premier](#)



Mr Hamilton, as one of our best customers are you making the most of the rewards available to you?
[Show me](#)



Mr Fray, we're developing new online services exclusively for Premier customers, so we'd really appreciate your feedback
[Go](#)





Trillium
HEALTH CENTRE

Your Health. Our Passion – for Life.

Explore Trillium's transformation journey to learn how we are changing for you.



- About Us
- Quality and Safe Care
- Transformation
- Programs & Services
- Community Programs
- Patient & Visitor Information
- Careers
- Health Information & Wellness Centre
- Volunteer Opportunities
- Foundation
- For Physicians & Health Professionals
- Newsroom
- Events



Every one of the 700,000 men, women and children who walk through our doors each year inspire us with stories of courage, perseverance,

joy and resounding strength. It's this power of the human spirit that drives us in our quest to achieve the best possible health outcomes for the people we serve, to explore new and better ways of doing things, and to maximize every available resource. Serving the health care needs of our community is a privilege we take very seriously. And it's why behind every



Quick Links

- [Email a Patient](#)
- [Look for a new job](#)
- [Find a doctor](#)
- [Directions to our hospital](#)

IBM WebSphere Portal V6.1: *THE Web 2.0 Portal !*



New Web 2.0 features for increasingly Web-savvy users

- **Exceed user expectations** with latest **Web 2.0** features for a richer, more responsive user interface
- **Respond quickly to new business opportunities** with faster, easier and more flexible reuse of Web-based assets and existing IT investments
- **Reduce deployment costs, complexity and maintenance** with more robust site and performance management capability

Exceptional User Experiences – Web 2.0 UI



Feeds

Search and federation

Tagging and messaging

Navigation and theming

Tooling and builders

Pre-built portlets

Google gadgets

Widgets

Desktop integration

REST services

External content

Mashup components



Integration Excellence

Seamlessly Combine Internal & External Applications/Services

Apps

Content

Cloud

Collaboration

Consumer



Portal











Role Based Personalized
Contextual Secure



Self Service Dynamic

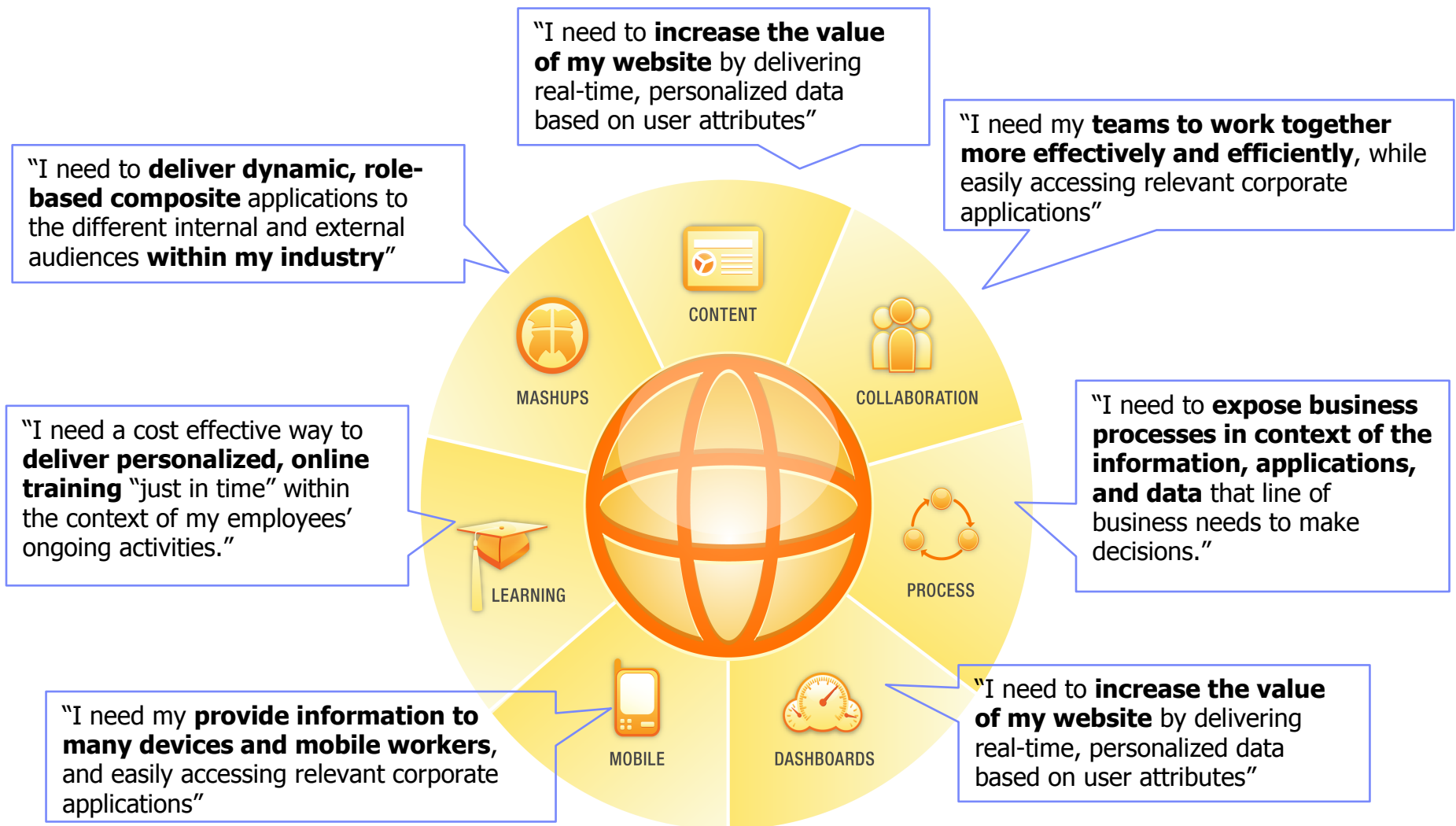
Combined with Web 2.0 & social capabilities, employee intranets & partner extranets help drive better business outcomes

IBM WebSphere Portal 6.1 Offerings

WebSphere Portal Extend		
WebSphere Portal Enable		
<p>WebSphere Portal Server</p>  <ul style="list-style-type: none"> • Application Server • Database • LDAP Directory Server • Admin • Workflow Portlets • Application Templates • Cluster Support • Single sign on • Search • Personalization • Presentation • Customization • Application aggregation • Java Portlet API • Use of 100's of portlets • WSRP support • Web 2.0 APIs: REST services, CSA, Live Text • WebSphere Portlet Factory (<u>1 PF Designer per enterprise</u>) 	    <ul style="list-style-type: none"> • Web Content Management* • Enterprise Search* • Process Workflow* <p>*Limited entitlements</p>	   <ul style="list-style-type: none"> • Instant messaging* • Team Collaboration* • Electronic Forms* <p>*Limited entitlements</p>



IBM Accelerators for WebSphere Portal



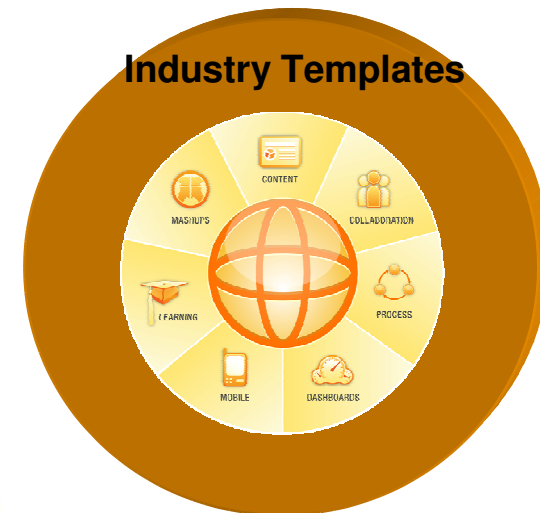
Weaving it All Together with Templates



**WebSphere Portal
Core Integration Platform**



**Accelerators
extend functionality to
match customer needs
and purchase patterns**

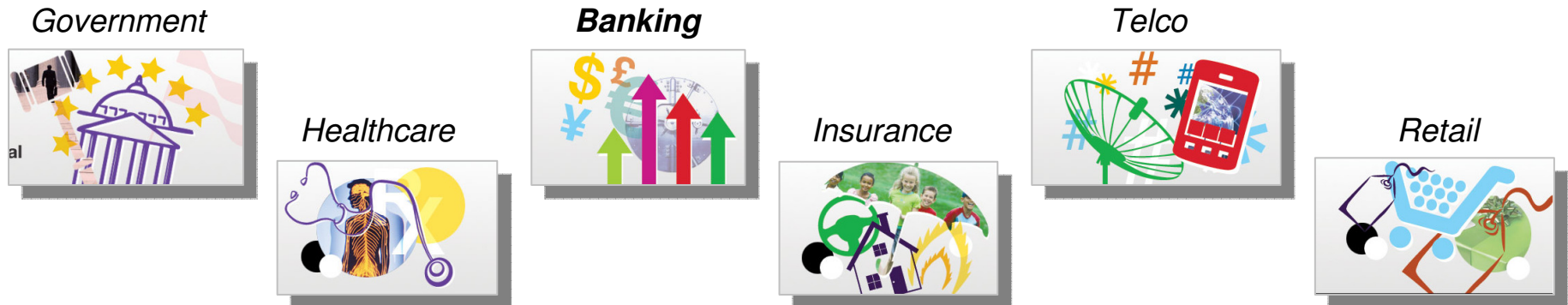


Industry Templates

**Industry Toolboxes
offer LOB and Industry
templates, assets, and best
practices to maximize "Out of
Box" value**



Templates to Jumpstart Portal Projects



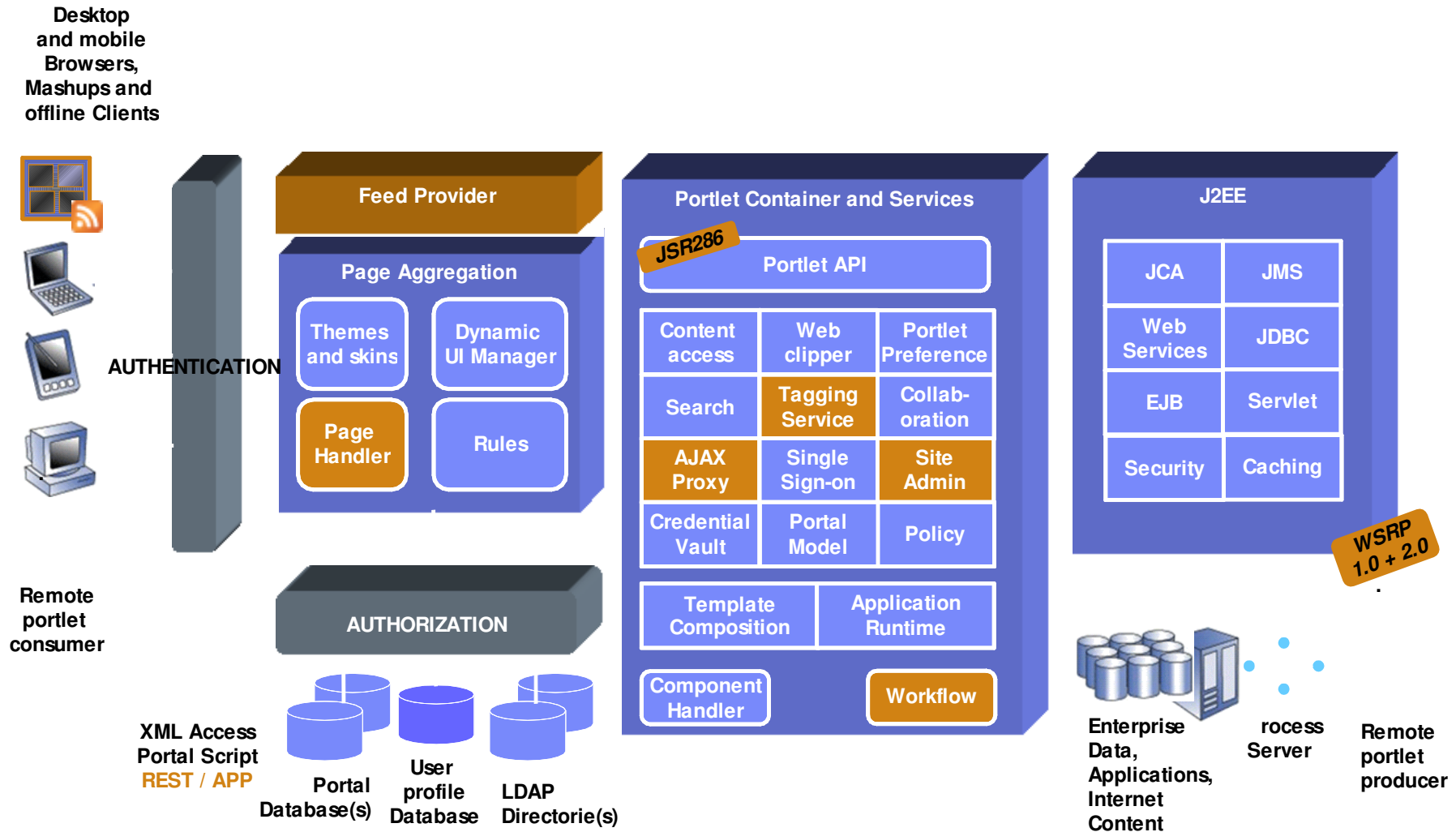
- Industry focus to accelerate solution construction for specific business needs
- Prebuilt Portal Sites contain structure and commonly used components for a target industry.
- Built-in best practices help IT to dramatically speed time-to-market and reduce the cost of deploying portal-based business solutions that span the Lotus portfolio
- Customers, Business Partners and IBM Services can readily configure, customize and extend.

Agenda

- Basics & Business Benefits of WebSphere Portal
- ✓ **WebSphere Portal Architecture and Components**
- Installation and Administration
- Integration Approach
- Portlet Development and Standards Support
- Portal Features
- Additional Information and Resources
- Q & A



WebSphere Portal V6.1 Conceptual Architecture



Themes and Skins

Themes

- Colors, fonts, and spacing used on the page
- Consist of cascading style sheets, images, etc.
- Can be applied to any page group

Skins

- Decorations around any portlet
- Each portlet can have a different skin
- Themes and skins can be applied to any group of pages, any time



Page Layout and Navigation

Layout

- Branding elements
- Pages and Navigation
- Each page has its own layout
- Any row/column layout is possible

Page Areas

- Administrators can set up different areas of the page for groups of users
- Areas can be locked or accessible to end users
- Page Administration can be delegated to others



Agenda

- Basics & Business Benefits of WebSphere Portal
- WebSphere Portal Architecture and Components
- ✓ **Installation and Administration**
- Integration Approach
- Portlet Development and Standards Support
- Portal Features
- Additional Information and Resources
- Q & A



Installation and Configuration

Options vary in OOB content

- Admin install
- Minimal level of fully functional Portal.
- Admin content, Welcome page, self-provisioning pages.
- Better runtime performance (less apps).
- Targeted for building stack solutions.

Full install

- Full set of applications and features.
- Targeted for evaluators, customers who are interested in the OOB apps.



WebSphere Portal Security

- SSO – Single Sign-On
- Security Admin Portlets
- Greatly improved Security Configuration
- Less steps involved in frequent tasks like switching to LDAP
- Easy to Setup and Use Federated User Repositories
- SPNEGO support (Windows® Desktop SSO)
- Automatically authenticate the user if logged into his desktop



Agenda

- Basics & Business Benefits of WebSphere Portal
- WebSphere Portal Architecture and Components
- Installation and Administration
- ✓ **Integration Approach**
 - Portlet Development and Standards Support
 - Portal Features
 - WebSphere Portal Roadmap
 - Additional Information and Resources
 - Q & A



Portlets and Integration Approaches

- Out of box Business Productivity Portlets
- IBM WebSphere Business Solutions Catalog Portlets and solutions
- Web site integration tools: Web Clipper Portlet, RSS Portlet
- WebSphere Portlet Factory
- Rational Application Developer

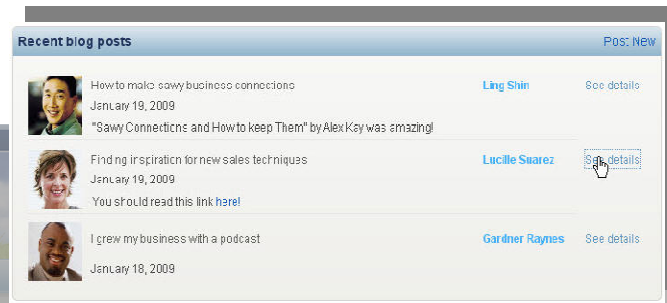
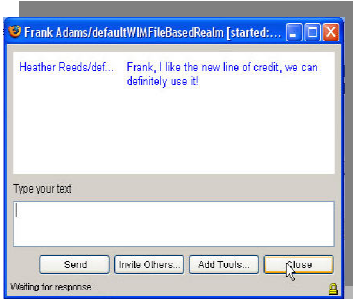


Web Portals + Social Networks: One Exceptional Web Experience

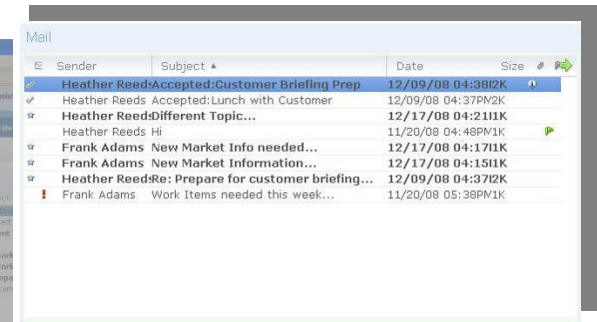
Portal Web 2.0 + Social Networking + Collaboration Tools can leverage out of box portlets

Blogs

Instant Messaging



Mail



New Business Workshop

03 Feb 2008, Noon-5pm
Town Hall Commons
Get in contact with and find valuable business resources.

[More Info](#)

Congratulations Heather!

Apply Now

Steps and bounds this year! We understand the growing pains of Open Financial your success is our business.

We're in, but not fast enough, then you need some credit to tide your business through the winter. We're here to support you to make your business a large growth. And we are here to support you to make your business a large growth. And we are here to support you to make your business a large growth.

Personal Advisor

Click-to-call me
Message me
Want to meet?
Contact me

Education

Open Financial Network Recommends...

Featured Video

OPEN FINANCIAL NETWORK
FINANCIAL UPDATE

Peers

Experts on this Topic

Vijay Nehry
Vijay Nehry
vijay_nehry@openfinancial.com

Related Content

- Building the Best Team
Published Mon Jan 08, 2008, 5:34PM
- Business is Easy as 123
Published Mon Jan 08, 2008, 5:34PM
- Empowering your Inner Entrepreneur
Published Mon Jan 08, 2008, 5:34PM
- Open Financial Network helps you grow
Published Mon Jan 08, 2008, 5:34PM
- 5 Steps to Success
Published Mon Jan 08, 2008, 5:34PM

My Workgroup

- We need to add more recommendations
Created By: Ling Shin | Updated: 12/16/2008
- Customers loves the personalization!
Created By: Lucille Suarez | Updated: 12/16/2008
- More online resources needed
Created By: Gardner Raynes | Updated: 12/16/2008
- One of my customers really likes the Community Features
Created By: Ron Espinosa | Updated: 12/16/2008
- We're recording more webcasts. Check out the schedule...
Created By: Ed El-Amon | Updated: 1/9/2008
- Try out the new community features!
Created By: Amar Sinastava | Updated: 1/18/2008

Communities

WebSphere Portal

- Out of Box Messaging Portlets

WebSphere Portal Home Admin **Applications** Search Center User Name | Help | Logout

Applications Collaboration Content **Messaging** Templates Search All

Welcome Mail Calendar

Welcome to Messaging
Add mail and calendar functionality to your site.

- ▶ **Common Mail.** Access mail in Microsoft Exchange and IMAP4 clients. Use the in-line rich text editor and spelling checker. Save attachments to a document folder.
- ▶ **Common Calendar.** Access the calendar in Microsoft Exchange.
- ▶ **Outlook Web Access...** To access this portlet in the catalog, [click here](#).
- ▶ **Domino Web Access.** View and work with documents in a Notes mail database that is enabled for Domino Web Access.

IBM WebSphere Portal provides additional portlets that you can use to integrate your site with IBM Lotus Domino. To learn more about Domino integration, go to the [Domino Integration page](#).

Use Messaging Now

Need Help?
Go to the [IBM Information Center](#). Find complete, in-depth product information.
Try [IBM developerWorks](#). Read technical articles about IBM WebSphere Portal.

Need Support?

- [IBM Software Support](#)
- [IBM Newsgroups](#)

Need More Information?
Visit the [IBM WebSphere Portal home page](#). Obtain additional information and product news.

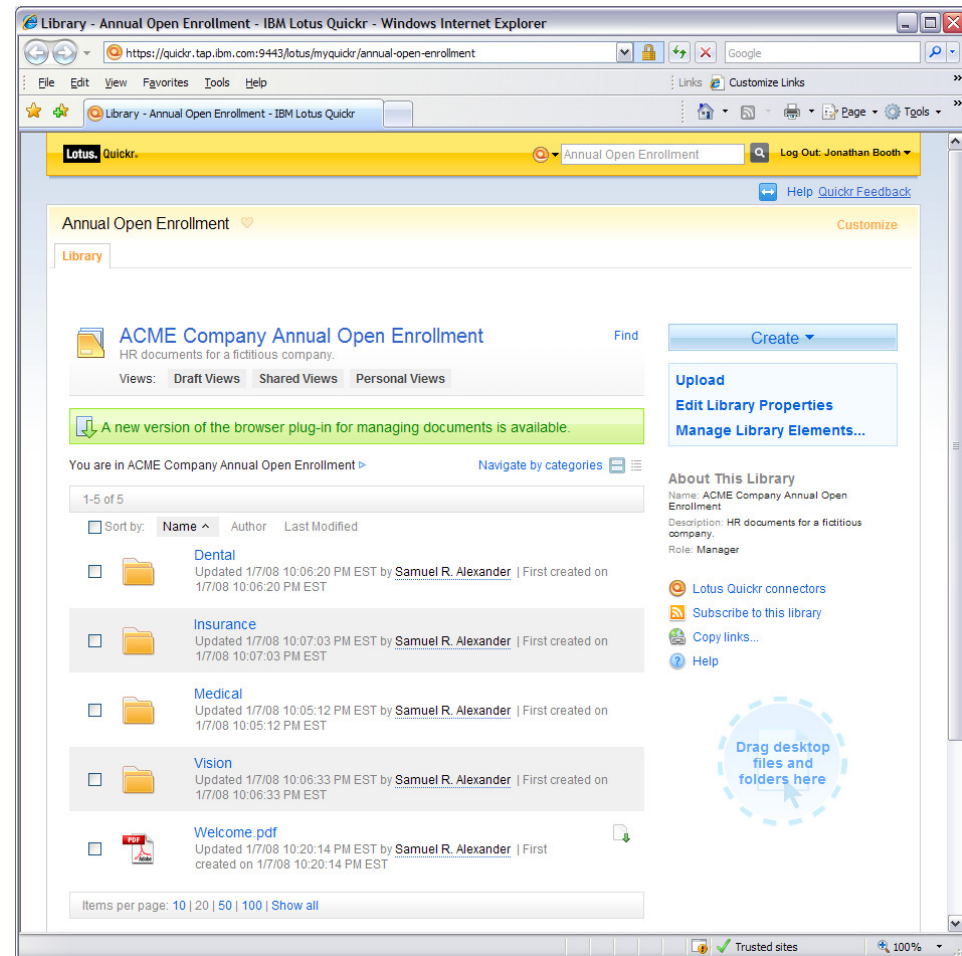
Other Links

- [IBM.com](#)
- [IBM Software Home Page](#)
- [IBM WebSphere](#)
- [IBM Software Support](#)
- [WebSphere Portal Zone](#)
- [Partner World](#)
- [Linux at IBM](#)



Lotus Quickr: Now Portal's Default Document Library

- Portal customers are entitled to use Quickr document libraries as Portal's default document store
- Conversion utilities and resources available between PDM and Quickr
- *Out of box integration portlets*





IBM Software Brand Catalogs

IBM WebSphere Portal Business Solutions

My favorites

About the catalog

Related links

- Catalog feedback
- Getting Your Solutions into the Catalog
- Subscribe to IBM Portal News
- developerWorks WebSphere Portal Zone
- WebSphere Portal newsgroup (NNTP)
- WebSphere Portal newsgroup (Web based)
- U-Pick program for IBM Business Partners
- Business Partner Application Showcase
- How to Submit Business Partner Software Promotions

IBM WebSphere Portal Business Solutions

The leading enterprise portal for On Demand business

Search in catalog:



[search tips](#)

Browse by:

IBM products

Industry

Provider

Solutions



News

New

Updated

Popular

Featured



IBM WebSphere Portal Widget Portlet

IBM WebSphere Portal Widget Portlet provides customizable, personalized, and managed access to widgets that are compliant with the iWidget Specification, thus extending the existing capabilities of WebSphere Portal to provide flexible integration with web components, independent of their technology.

Rating: unrated Popularity: ★★★★★

Provider: IBM

Agenda

- Basics & Business Benefits of WebSphere Portal
- WebSphere Portal Architecture and Components
- Installation and Administration
- Integration Approach
- ✓ **Portlet Development and Standards Support**
- Portal Features
- Additional Information and Resources
- Q & A



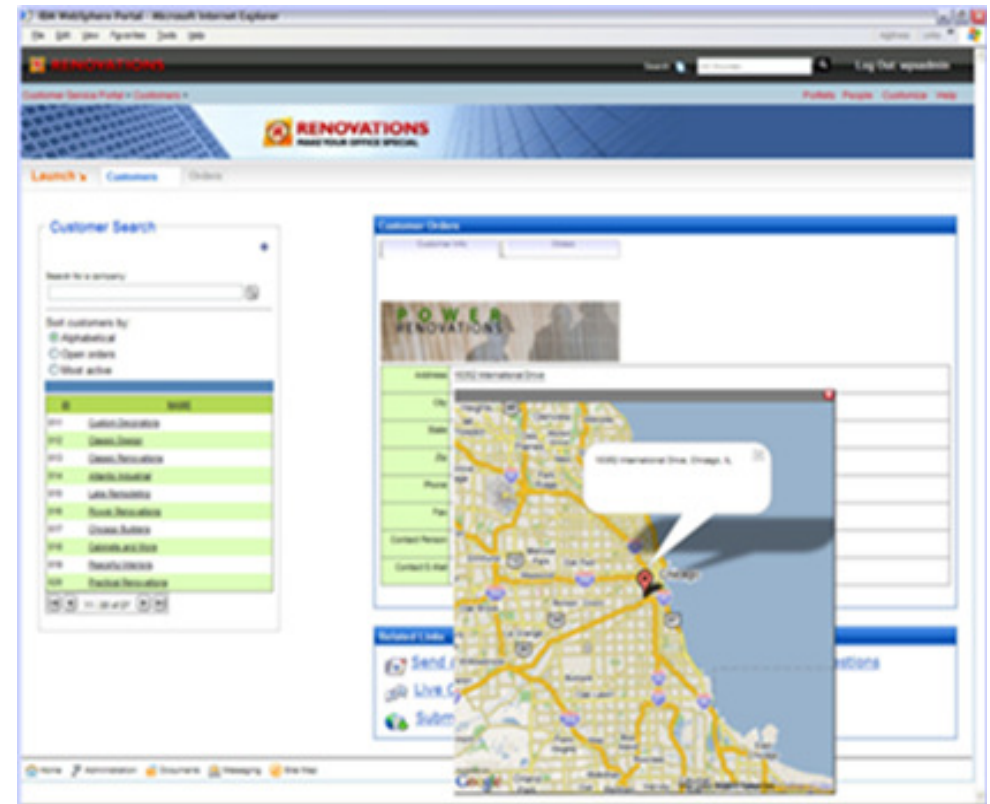
Developing Portals and Portlets

- Developers, Web Designers and Portal Administrators can work independently when developing and changing the portal.
- Web Designers can develop new Themes and Skins to change the look and feel
- Portal Administrators put it all together by laying out portlets and pages
- One of the main activities is creating portlets
- Some portlets don't require any coding
- There are several options for developing portlets from scratch
- Best practice is to build your portlet on open standards



IBM WebSphere Portlet Factory

- Delivers SOA applications rapidly without writing Java code
- Simplifies integration with pre-built connectors
- Provides a rich Web 2.0 user experience
- Delivers highly customized role based views from a single code base
- Empowers business users to personalize



Portlet Factory and Dashboard Framework

Dashboard Framework



- Alerting
- Charting
- Reusable Design Components
- Business User Configuration
- Common Administration

Ideal for companies that want a composite framework specifically designed for building dashboards



Portlet Factory Tooling

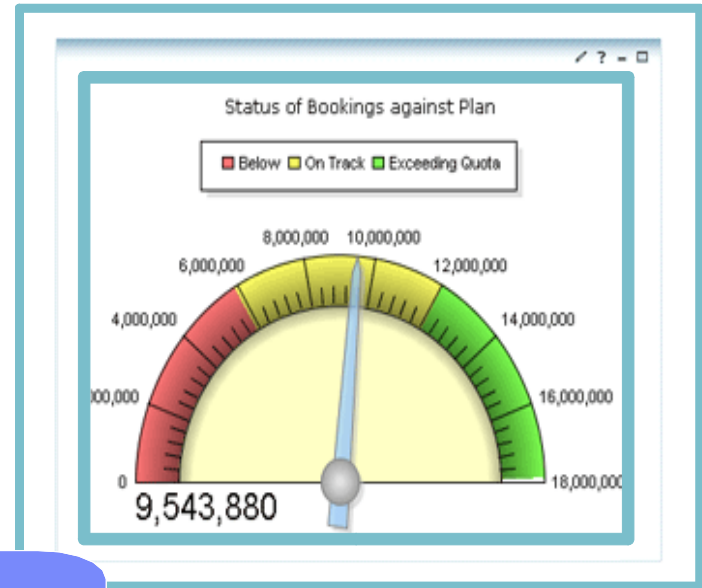


- Rapid App Dev
- Service-oriented architecture
- Integration Extensions
- Profiling engine

Ideal for companies that want to build portal-based composite applications and want the maximum level of flexibility



Standard Java Portlet API (JSR 168) Simplified



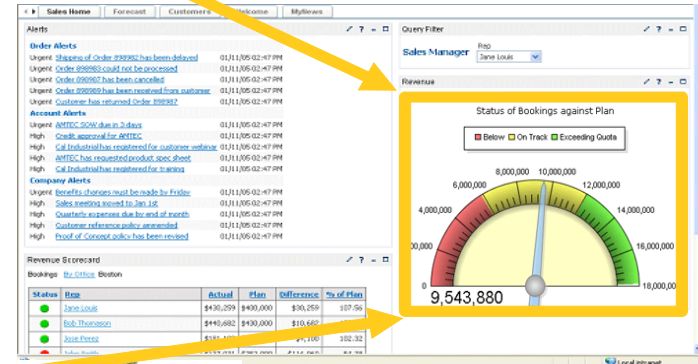
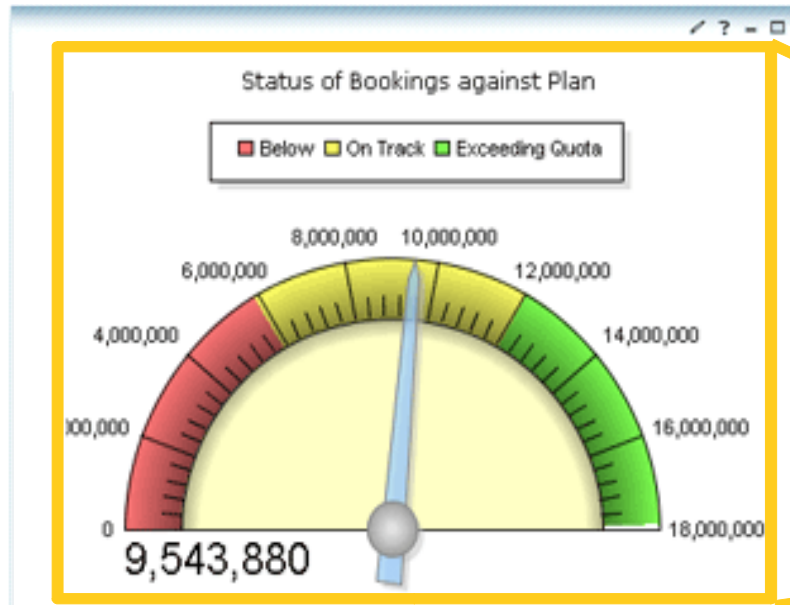
Code once.
Deploy and reuse
in any portal.

```

* Generated Method [_pageDispatcher]
* Generated by builder call [bc20]
*/
public void _pageDispatcher(WebAppAccess webAppAccess)
{
    com.bowstreet.webapp.JSPSupport.dispatch(webAppAccess);
}

/**
* Generated Method [getFlights_PagingGetImgName]
* Generated by builder call [bc21]
*/
public String getFlights_PagingGetImgName(WebAppAccess webAppAccess, String button, String position)
{
    PagingAssistant asst = (PagingAssistant)webAppAccess.getVariables().getObject("getFlights_Paging");
    String img = button + position;
    if ((button.equals("First") || button.equals("Prev")) && !asst.hasPreviousPage())
        img = button + "Disabled";
    if ((button.equals("Next") || button.equals("Last")) && !asst.hasNextPage())
        img = button + "Disabled";
    return webAppAccess.getVariables().getXmlText("getFlights_PagingButtonImages", img);
}
    
```

Web Services for Remote Portlets (WSRP) Simplified...very simplified



Server that the portlet is deployed and running on

I'm doing all the work, accessing data, generating and sending content



Working's overrated



Agenda

- Basics & Business Benefits of WebSphere Portal
- WebSphere Portal Architecture and Components
- Installation and Administration
- Integration Approach
- Portlet Development and Standards Support
- ✓ **Portal 6.1 Features**
- Additional Information and Resources
- Q & A



WebSphere Portal Version 6.1 Design Goals

- Improved out of box capabilities
- More flexible management options
- Web 2.0 Extensions
- Enhanced Java and Web Services
- Simplified install and deployment
- WAS 6.1 Exploitation



Defining a Portal Page using HTML

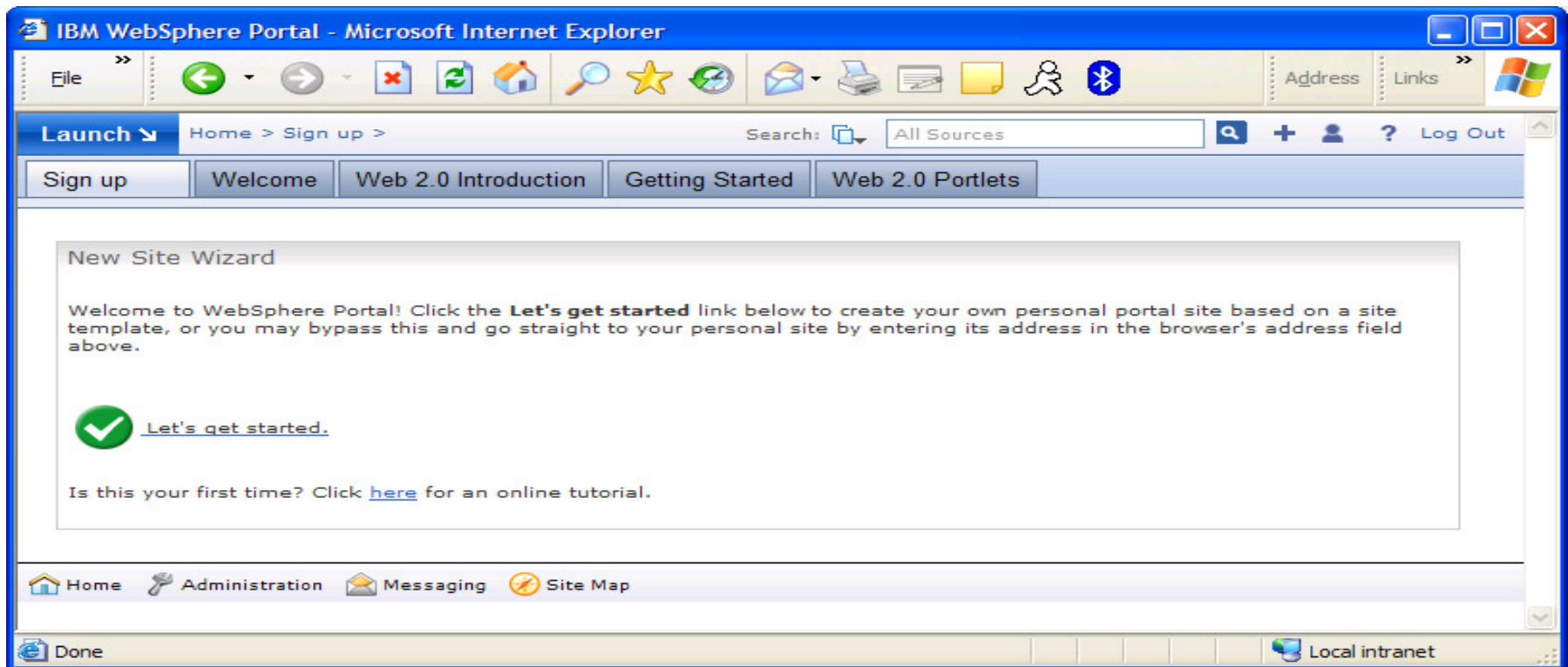
Import your packaged HTML Page, created with the Design tool of your choice, such as Dreamweaver or other web design tools, and select the HTML page to be rendered by WebSphere Portal

The image illustrates the three steps of defining a portal page using HTML:

- Step 1:** In the portal interface, right-click on 'New Page' to open the context menu.
- Step 2:** In the 'Page Properties' dialog box, select 'Static Content' under the 'Type of Page' section.
- Step 3:** In the 'Page Properties' dialog box, select 'HTML' under 'This page supports' and set the 'ZIP or HTML File Location' to 'c:\book_store.zip'.

New Site Wizard

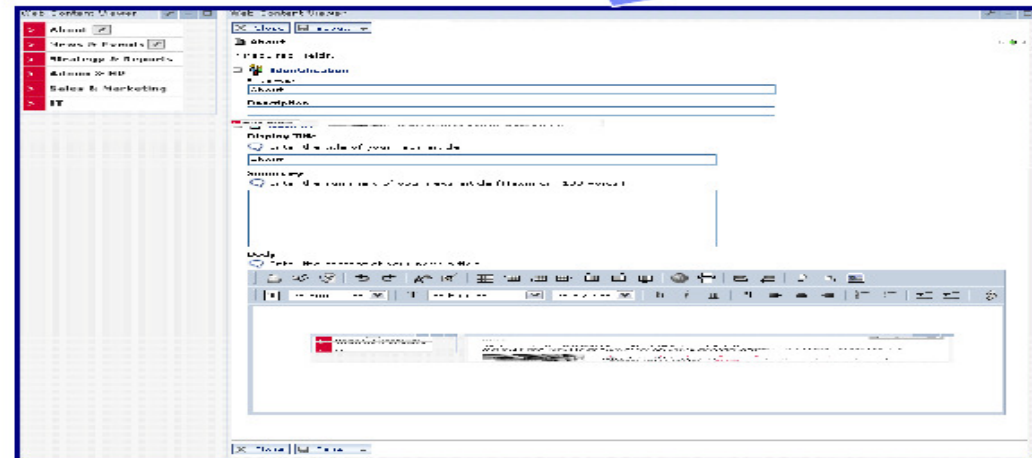
Quickly create new Virtual Portals with Portal Sites and customize to suite your needs



Web Content Management



- Authors can perform actions in context
- Actions can be triggered against items referenced in a navigator/menu
- ONLY items the user has access to will be editable



Extend Search to More Search Services

Add your favorite search services to the WebSphere Portal Search Center
 Integrate internal (e.g. experts, bookmarks) and external search services

The screenshot shows a search interface with a search box containing 'CNN' and a 'Search' button. Below the search box is a 'Search Toolbox - Display Results' section and a 'Type Search Input' section. The main results area shows a table with columns for 'Source', 'Details', and 'Date'. The table contains several entries, including 'CNN Programs - Student News', 'CNN Programs - Anchors/Reporters - Anderson Cooper', 'Celebrity Gossip | Entertainment News | Arts And Entertainment - FOXNews.com', 'CNN.com - RSS (Really Simple Syndication)', 'CNN Programs - Anchors/Reporters - Miles O'Brien', 'CNN Programs - Anchors/Reporters - Anderson Cooper', and 'CNN.com - RSS (Really Simple Syndication)'. To the right of the table are two side panels. The top panel is titled 'Dingering Search' and contains text about 'Latest headlines from CNN, the U.S. news Network, including World, U.S., politics, business, entertainment, science, weather, and sports news.' The bottom panel is titled 'Dingdong Search' and contains text about 'CNN.com - Breaking News, U.S., World, Weather, Entertainment & Video News'.

External Search Results portlet

Extending the Capabilities of WebSphere Portal to Mobile Devices

IBM Mobile Portal Accelerator





WebSphere Portal

Library

Success stories

Events

How to buy

Training and certification

Services

Software > WebSphere >

Web Portal software from WebSphere

WebSphere Portal software - Powering efficient, innovative organizations worldwide



Portals 101

A portal guide

→ Learn more



Why WebSphere Portal?

New initiatives, industry tools and more

→ Learn more

Related links:

- Drive business value with Web portals
- IBM Service Oriented Architecture (SOA) Entry Points: People
- Lotus Forms
- Lotus Web Content Management
- Lotus Mobile and Wireless offerings
- Rational Application Developer for WebSphere Software
- Rational Automation Framework for WebSphere

What are portals?

Web portals allow partners, employees and customers to choose their user experience, with personalized applications based on role, context, actions, location, preferences and team collaboration needs. IBM WebSphere Portal software provides a composite application or business mashup framework and the advanced tooling needed to build flexible, SOA-based solutions, as well as the unmatched scalability required by any size organization.

[Learn more](#)

Build and extend your portal business applications



- Enhanced accelerators easily snap on to WebSphere Portal software, helping customers reduce the costs of [deploying content](#), [automating business processes](#), [managing performance dashboards](#) and more. [Learn more](#)
- IBM Mashup Center helps IT departments reduce their portal application backlog and improve productivity by empowering line of business, self-

We're here to help



Easy ways to get the answers you need.



Request a quote



E-mail IBM

Or call us at:
877-426-3774
Priority code:
104CBW63

News and events



Save up to 15% on Lotus and WebSphere Portal software



Magic Quadrant for Horizontal Portal Products, 2009 (Gartner PDF, 296KB)



IBM Portal Excellence Conference 2009. Register now!

Summary

In this session, we discussed -

- Introduction to Portal
- Portal Overview and Components
- Portal Architecture
- Portlet Development
- Portal Integration Approach
- Portal Features

Get started with Portal!



Additional Information and Resources

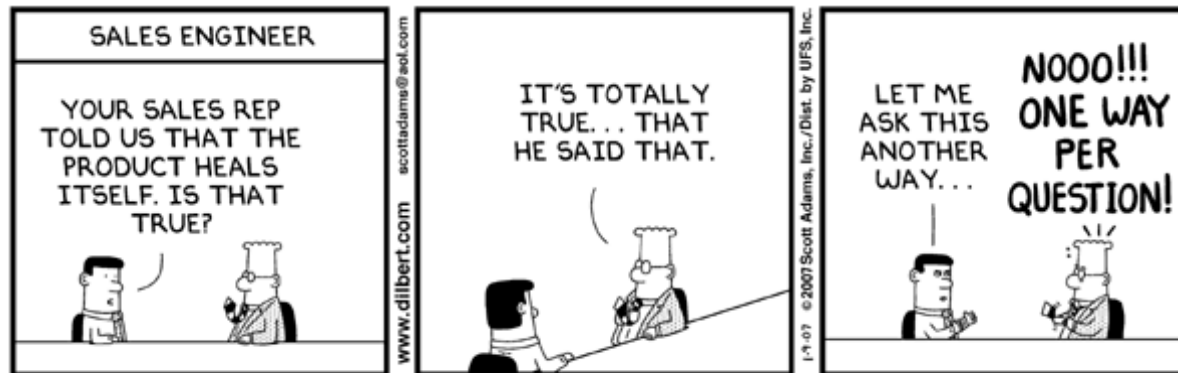
- **WebSphere Portal – IBM Site**
<http://www-3.ibm.com/software/genservers/portal/>
- **WebSphere Portal Business Solutions Catalog**
<http://catalog.lotus.com/wps/portal/portal>
- **WebSphere Portal Developer's Zone**
<http://www-106.ibm.com/developerworks/websphere/zones/portal/>
- **Product Documentation and WebSphere Portal Wiki**
<http://www-3.ibm.com/software/genservers/portal/library/>
<http://www-10.lotus.com/idd/portalwiki.nsf>
- **Education**
<http://www-01.ibm.com/software/lotus/training/portalofferings.html>
- **WebSphere Portal Blog**
<https://www.ibm.com/developerworks/mydeveloperworks/blogs/WebSpherePortal/>



Thank you!

Lauren Wendel - Wendel@us.ibm.com

Sunil Hirannah - Sunilh@us.ibm.com



© Scott Adams, Inc./Dist. by UFS, Inc.





IBM PORTAL EXCELLENCE CONFERENCE 2009

October 12 - 15, San Diego, California



Session ID: B01

Session: WebSphere Portal JumpStart

Presenter(s): Sunil Hirraniah, IBM and Lauren Wendel, IBM

Please take a few minutes to fill out the session survey. Thank you



© IBM Corporation 2009 All Rights Reserved.

The information contained in this publication is provided for informational purposes only. While efforts were made to verify the completeness and accuracy of the information contained in this publication, it is provided AS IS without warranty of any kind, express or implied. In addition, this information is based on IBM's current product plans and strategy, which are subject to change by IBM without notice. IBM shall not be responsible for any damages arising out of the use of, or otherwise related to, this publication or any other materials. Nothing contained in this publication is intended to, nor shall have the effect of, creating any warranties or representations from IBM or its suppliers or licensors, or altering the terms and conditions of the applicable license agreement governing the use of IBM software.

References in this presentation to IBM products, programs, or services do not imply that they will be available in all countries in which IBM operates. Product release dates and/or capabilities referenced in this presentation may change at any time at IBM's sole discretion based on market opportunities or other factors, and are not intended to be a commitment to future product or feature availability in any way. Nothing contained in these materials is intended to, nor shall have the effect of, stating or implying that any activities undertaken by you will result in any specific sales, revenue growth or other results.

All customer examples described are presented as illustrations of how those customers have used IBM products and the results they may have achieved. Actual environmental costs and performance characteristics may vary by customer.

IBM, the IBM logo, WebSphere, Lotus, Lotus Notes, Domino, Quickplace, Sametime, Workplace and Quickr are trademarks of International Business Machines Corporation in the United States, other countries, or both.

Java and all Java-based trademarks are trademarks of Sun Microsystems, Inc. in the United States, other countries, or both.

Microsoft and Windows are trademarks of Microsoft Corporation in the United States, other countries, or both.

Linux is a registered trademark of Linus Torvalds in the United States, other countries, or both.

Other company, product, or service names may be trademarks or service marks of others.

All references to Renovations Inc. refer to a fictitious company and are used for illustration purposes only.

