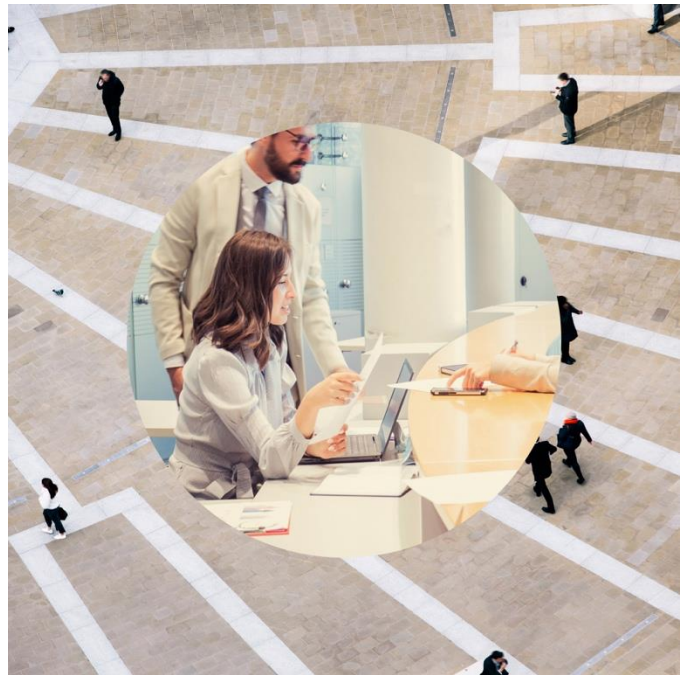


Redefining mergers and acquisitions with data lineage

Accelerate data consolidation and minimize disruptions in mergers & acquisitions



Mergers and acquisitions (M&A) bring complex data challenges, from integrating IT systems to ensuring regulatory compliance. Without clear visibility into inherited data, organizations risk inefficiencies, unexpected costs, and compliance issues.

McKinsey Global Institute estimates that companies could generate **\$9.5–\$15.4 trillion** in business value by investing in AI tools like data lineage¹. These technologies streamline M&A, accelerate data integration, and support compliance—reducing risks and unlocking new opportunities.

IBM watsonx.data intelligence provides data lineage capabilities to map data flows, transformations, and interactions across systems. By leveraging data lineage, you can accelerate data consolidation, perform impact analysis, and streamline post-merger integration for a smoother, disruption-free M&A process.

Data Lineage: a key asset for mergers and acquisitions

Streamline M&A processes

Accelerate integration and data consolidation while understanding the level of compliance in inherited systems. Avoid surprises in your merger or acquisition. Mergers and acquisitions happen for many reasons, and the context is always changing.

IT teams may be going into their new data environment completely blind, unsure of what applications, processes and data they inherited. Even in cases of the friendliest agreements, the acquiring company might still be blindsided by the sheer quantity of scripts in the new environment can be overwhelming and expensive to handle. In most merger and acquisition situations, manual data lineage is overwhelmingly expensive.

Scan and process nearly any environment

IBM's automated data lineage platform uses metadata to build a map of how data is transformed, used and processed in your environment. It can detect changes within data tables to show you how they affect downstream applications. You can highlight relevant information in the context of the data pipeline with color-coded active tags. With over 50 scanners available, you can visualize the movement of data in almost any environment and save time and money by finding areas where revisions are needed. Moreover, lineage delivers visibility at multiple levels to provide understanding across all departments and job titles.

See Data Lineage in action — book a live demo to streamline your M&A process.

[Book a live demo](#)



1. McKinsey, "[The economic potential of generative AI: The next productivity frontier](#)," 14 June 2023.

© Copyright IBM Corporation 2025. IBM, IBM watsonx, watsonx.data and the IBM logo are trademarks or registered trademarks of IBM Corp., in the U.S. and/or other countries.

This document is current as of the initial date of publication and may be changed by IBM at any time. Not all offerings are available in every country in which IBM operates.