

IBM Storage Protect for Cloud Google Workspace

Protect your data to empower your workforce and your business

Highlights

Automate backup and restoration

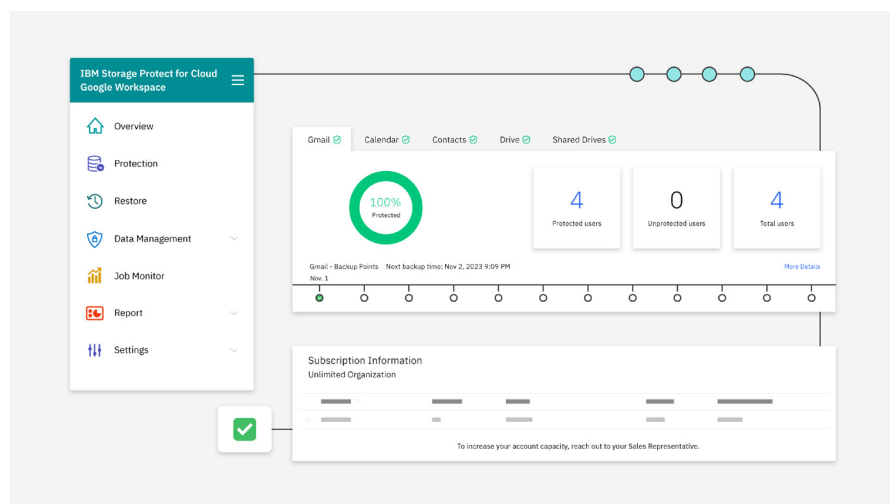
Centralize data management

Deploy flexible retention policies and future-ready scalability

Advance security and compliance

In an age where data is the lifeblood of every organization, the consequences of inadequate protection have never been more severe. The relentless growth of digital threats and high volumes of sensitive data create a perfect storm of vulnerability. The safety of your data depends on the strength of your organization's data resilience armor. With IBM Storage Protect for Cloud Google Workspace, you can rest easy knowing your data is secure.

IBM Storage Protect for Cloud Google Workspace is a robust and secured solution for storing and managing your organization's critical data, including data in Gmail, Drive, Calendar and Contacts. This solution integrates seamlessly with Google Workspace, simplifying collaboration and enabling teams to work effectively from any location. With user-friendly controls, organizing and retrieving data become effortless, saving time and enhancing productivity. In the event disaster does strike, IBM Storage Protect for Cloud Google Workspace supports the resilience of your business with reliable backup and recovery capabilities.





IBM Storage Protect for Cloud Google Workspace offers automatic backup and restoration functionalities, ensuring that your data is consistently protected. It also provides global availability and supports multiple cloud platforms, allowing users to access their data from anywhere in the world.

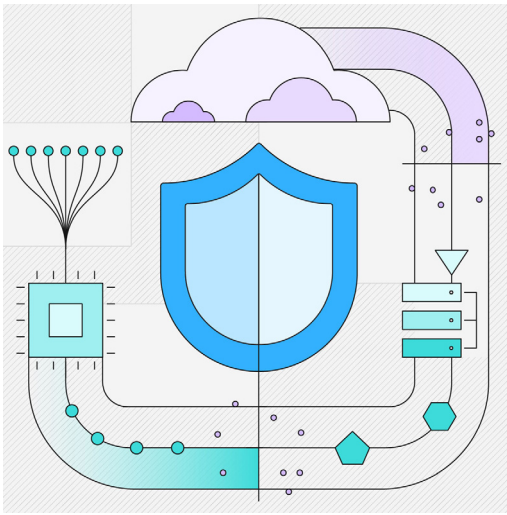
IBM Storage Protect for Cloud Google Workspace retention policies are highly flexible, enabling users to customize how long the solution retains their data. It's also designed with future scalability in mind, helping ensure that it can accommodate your changing data needs as your business continues to grow. To address security concerns, the solution incorporates advanced features that facilitate compliance management.

Automate backup and restoration

Protect your enterprise from data loss and downtime with IBM Storage Protect for Cloud Google Workspace. Google Workspace provides a few basic data protection features natively, like version history and the ability to recover deleted files from the trash. However, it falls short in providing comprehensive backup and restoration capabilities. It also lacks automated daily backups, leaving you exposed to data loss due to user error, malicious activity, or system failures.

IBM Storage Protect for Cloud Google Workspace offers automated backup and restoration features that go beyond what Google Workspace alone provides. It helps ensure that your data is backed up continuously, reducing the risk of data loss. With one-click restoration, you can quickly recover data, minimize downtime and support business continuity.

The automated backup and restoration of IBM Storage Protect for Cloud Google Workspace is a lifeline for businesses that rely on financial, customer or operational data. It helps ensure that no vital information is lost. This is crucial for teams that collaborate across regions and where data can be dispersed across multiple platforms and devices. IBM Storage Protect for Cloud Google Workspace unifies these disparate data sources, supporting the continuity of your collaborative efforts.



Centralize data management

Simplify your organization's data management processes with IBM Storage Protect for Cloud Google Workspace. The user-friendly interface allows for easy organization, search and retrieval of your data. With advanced search capabilities and intuitive controls, finding the right file can be effortless.

IBM Storage Protect for Cloud Google Workspace offers a unified console for managing data from Google Workspace to Azure, Salesforce, Microsoft 365 and Dynamics 365 workloads. This centralization streamlines data operations, reducing complexity and increasing overall efficiency.

For organizations that rely heavily on document sharing and collaboration, this feature simplifies those processes. Teams can easily access and collaborate on documents without the need for extensive data management expertise. Those team members who manage complex projects and tasks will also appreciate this streamlined data management feature, as it helps ensure that all project-related data is in one place, easily accessible and organized. In larger organizations, data often resides in departmental silos. Streamlined data management breaks down these silos, allowing data to flow smoothly between departments and enhancing overall efficiency.

Additionally, maintaining compliance and data governance is a significant challenge for many businesses. The centralized data management feature simplifies data governance by providing a single point of control for all data assets, making it easier to adhere to regulations and standards.

Deploy flexible retention policies and future-ready scalability

Your organization's needs can change at a moment's notice, but Google Workspace doesn't natively offer the flexibility you need to create custom data retention policies. Instead, it follows default retention rules, which may not align with your organization's specific compliance and legal requirements. Scaling storage within Google Workspace can also be challenging, as it often requires purchasing additional storage quotas, which may not be cost-effective. IBM Storage Protect for Cloud Google Workspace can fill these gaps.

IBM Storage Protect for Cloud Google Workspace empowers you to define and customize your data retention policies. This means that you no longer need to be locked into a rigid retention schedule. Instead, you can fine-tune your data preservation to meet your specific compliance and legal needs. Additionally, this solution offers future-ready scalability, eliminating the need to purchase additional Google Workspace storage volumes. This scalable solution adapts to growing businesses without the hassle of data migration.



Advance security and compliance

As privacy concerns continue to gain importance, your organization must be able to keep up with its data management policies. For heavily regulated industries like healthcare, finance, and legal services, data compliance is crucial.

With automated backups and customizable retention policies, organizations with industry-specific bylaws can easily adapt to evolving privacy regulations like the General Data Protection Regulation (GDPR) and Health Insurance Portability and Accountability Act (HIPAA).

Although Google Workspace has a few native built-in security features, they may not be sufficient for organizations with strict data security and compliance requirements. Google Workspace's native security features lack some of the advanced capabilities you need for reliable threat detection and comprehensive compliance management. IBM Storage Protect for Cloud Google Workspace, however, goes above and beyond by providing advanced security measures, including multi-layered encryption, access controls, and AI-driven threat detection. IBM Storage Protect for Cloud Google Workspace supports compliance with stringent industry regulations like GDPR and HIPAA, reducing legal risks. The solution's advanced security features enhance data protection beyond what Google Workspace alone offers.

Conclusion

In today's digital landscape, there's no room for compromise when it comes to data protection, management or scalability. IBM Storage Protect for Cloud Google Workspace offers the complete package, ensuring that your data is well protected. IBM Storage Protect for Cloud Google Workspace doesn't just fill the gaps left by native Google Workspace options, it exceeds them, offering you peace of mind, efficiency and a competitive edge.

IBM Storage Protect for Cloud is specifically designed to address the challenges faced by businesses in the modern digital landscape. Whether it's protecting your Microsoft 365, Dynamics 365, Microsoft Azure, or Salesforce data, IBM Storage Protect for Cloud Google Workspace has you covered.

Why IBM?

IBM® offers a vast portfolio of hardware, software and services including industry-leading data storage products and solutions. Innovative technology, open standards, excellent performance and a broad portfolio of proven storage offerings—all provided by IBM, a recognized industry leader—are just a few of the reasons to consider IBM Storage Protect for Cloud Google Workspace.

For more information

To learn more about IBM Storage Protect for Cloud Google Workspace, contact your IBM representative or IBM Business Partner or visit ibm.com/products/storage-protect-for-cloud.

© Copyright IBM Corporation 2023

IBM Corporation
New Orchard Road
Armonk, NY 10504

Produced in the
United States of America
November 2023

IBM and the IBM logo are trademarks or registered trademarks of International Business Machines Corporation, in the U.S. and/or other countries. Other product and service names might be trademarks of IBM or other companies. A current list of IBM trademarks is available on ibm.com/trademark.

This document is current as of the initial date of publication and may be changed by IBM at any time. Not all offerings are available in every country in which IBM operates.

It is the user's responsibility to evaluate and verify the operation of any other products or programs with IBM products and programs.

THE INFORMATION IN THIS DOCUMENT IS PROVIDED "AS IS" WITHOUT ANY WARRANTY, EXPRESS OR IMPLIED, INCLUDING WITHOUT ANY WARRANTIES OF MERCHANTABILITY, FITNESS FOR A PARTICULAR PURPOSE AND ANY WARRANTY OR CONDITION OF NON INFRINGEMENT.

Statement of Good Security Practices: No IT system or product should be considered completely secure, and no single product, service or security measure can be completely effective in preventing improper use or access. IBM does not warrant that any systems, products or services are immune from, or will make your enterprise immune from, the malicious or illegal conduct of any party.

The client is responsible for ensuring compliance with all applicable laws and regulations. IBM does not provide legal advice nor represent or warrant that its services or products will ensure that the client is compliant with any law or regulation.

