

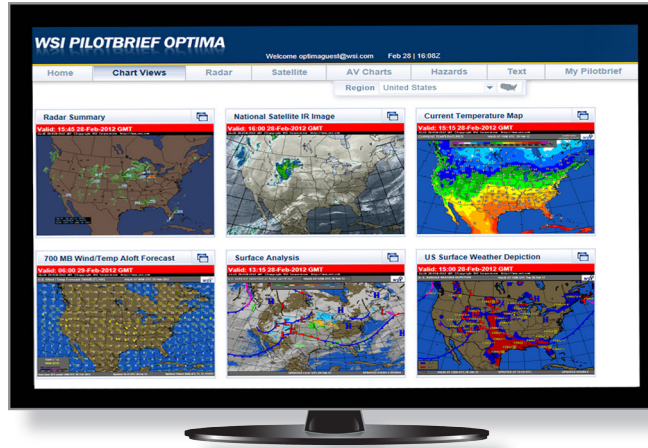
WSI Pilotbrief Optima for FBOs



The Weather Company, an IBM Business, delivers a web-based version of WSI Pilotbrief Optima for FBOs to offer on their own PCs. This web-based product offers an easy to download and install license for running Pilotbrief Optima within your existing web-browser.

Placing an icon on your desktop, pilots can easily view their weather without the need to enter any credentials!

Pilots and aviation personnel around the world utilize Pilotbrief Optima to plan and optimize global flight operations based on its high quality, actionable, and industry-leading weather graphics and briefings. Pilotbrief Optima combines a high performance map, high definition weather information, enhanced global overlays and can be customized for your FBO.



Anticipate, visualize
and avoid hazardous
weather in a whole
new way

Give the pilots everything they need.

High Definition Convective Weather Layers

Includes enhanced radar, Vertically Integrated Liquid (VIL), and Echo Top mosaics, features a four-fold improvement in spatial resolution showing the highest tops of greatest concern for improved confidence in route planning and decision-making.

WSI Rapid Precision Model Forecast

The Weather Company's proprietary RPM weather model puts out hourly forecasts of visibility, ceiling, temperature, winds, and precipitation. View these forecasts in the forecast monitor or on the interactive map.

WSI Global Weather Content

Pilotbrief Optima features global weather content including SATrad, a depiction of convection through the tropics derived from high resolution model data, global SIGMET data, International NOTAMs, Nat-Tracks, Hi Level Significant Weather, and anything else that could cause a disruptive flight.



WSI Forecast Enroute Hazards

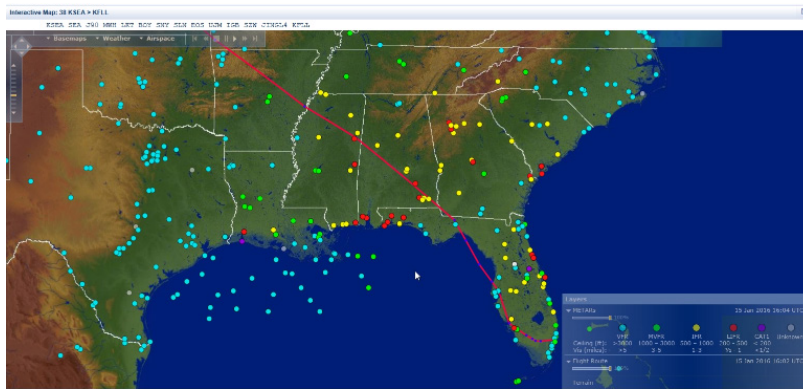
The Weather Company forecasters issue a realtime SIGMET and a forecast for convection, turbulence, icing, volcanic ash clouds, and blowing dust around the world. Covering all flight levels over the CONUS and FL 1 80 and above globally, pilots can overlay their route with the valid forecast period and assess what disturbances they may encounter. Edit your route to avoid severe icing, turbulence, volcanic ash, or other phenomena.

WSI Global Lightning

With an optional overlay of global lightning data* from The Weather Company, pilots can quickly identify areas of strongest convective activity outside ground-based weather radar range.

ASD Flight Tracking

Flight incoming flights to your airfield, equipment type, and time of arrival view with FM ASD flight data available as an interactive map overlay. Highlight your highest value customers in bold to ensure you are ready when they arrive!



Minimum System Requirements

WSI Pilotbrief Optima is tested on Windows XP SP3 and Windows 7 using a standard web browser such as IE7 or greater, Firefox 4 or higher, or Chrome. For best performance, 2GB of RAM is recommended.

WSI Pilotbrief Optima for FBOs

Featuring the best global weather content available, an intuitive user interface, and a powerful interactive map, Pilotbrief Optima offers graphical weather, NOTAMs, TFRs, route selection including saved and recently cleared routes, as well as a quality-controlled radar imagery.

*Data is from Vaisala's National Lightning Detection Network and GLD360.

[Learn more](#)