

Five steps to turbocharge your network performance management

Modern monitoring and analytics

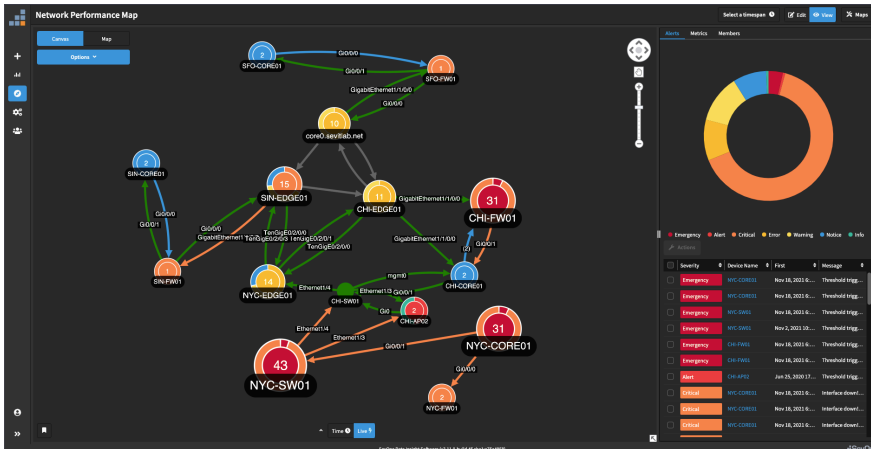


Figure 1. Transform raw network performance data with modern collection, visualization and integration capabilities.

Every network operations and network engineering manager knows that modern IT environments are more complex than ever. Adoption of new technologies, such as VMs, container-based microservices and shared multitenant infrastructure, has been growing rapidly and poses new challenges for network performance.

To respond to these changes, modern IT organizations need modern tools and approaches to ensure network performance and delivery.

IBM® SevOne® delivers the modern collection, visualization and integration capabilities required to transform raw network performance data into actionable, real-time insights.

Modern collection—Discover a comprehensive collection of multivendor performance data from the physical and virtual network infrastructure.

Modern visualizations—Find, use and share valuable insights with user-friendly interactive visualizations and analytics.

Modern integrations—Integrate operations across multiple IT systems with streaming metrics, third-party data integrations and more.

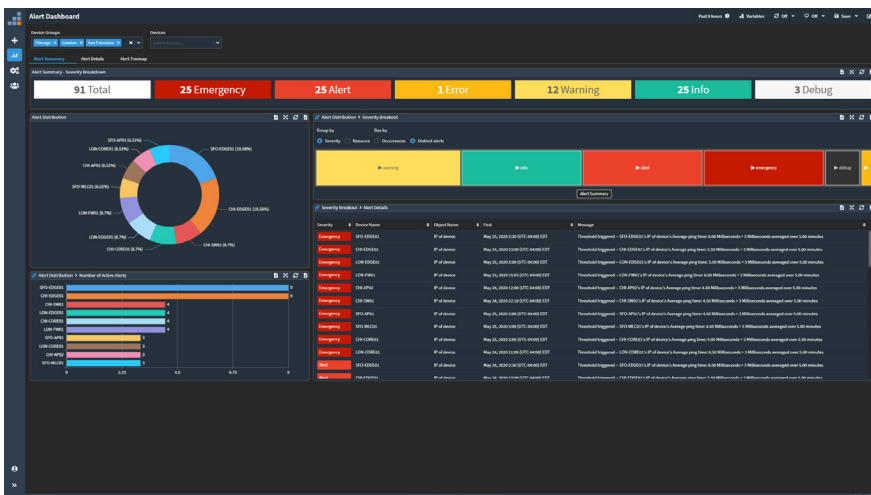


Figure 2. Get actionable, real-time insights with the alert dashboard summary.

Here are five steps to turbocharge your network performance. These steps will help network operators and engineers quickly measure their network performance management capabilities against what is actually required in modern IT environments. Can your current network performance management tool pass this five-part performance checkup?

Step 1: Run a report with thousands of network interfaces in seconds

Reports shouldn't take minutes to load—you should see them in seconds. Traditional network performance management products, with centralized architectures and a single database, often impact report generation performance, and not in a good way. IBM SevOne, with its patented distributed architecture, allows you to run reports, covering thousands of devices and their interfaces, in just seconds.

Step 2: Automate baselining to understand what's normal and what's not

Dial back your daily anxiety by baselining every performance metric to build up a comprehensive and accurate understanding of the normal activity in your network. More important, with IBM SevOne, IT professionals gain the ability to instantly spot what isn't normal so you can focus on it and take swift action.

Step 3: Plan more efficiently with simple device-based licensing

Tired of guessing how many *elements* or *objects* there are in your environment, or how much flow data it will take to monitor that new set of devices in your network? With IBM SevOne, we offer a simple device-based pricing model. Count all the network devices you want to monitor, just one number—it's that simple.

Step 4: Collect and analyze all your metric and flow data

As modern networks evolve to be software-defined and wifi-enabled everywhere, enterprises need a management platform that's designed to collect, analyze and connect disparate data sets so there are no gaps in visibility. With IBM SevOne, you can collect all the metric and flow data you need. Teams can then take advantage of out-of-the-box dashboards to visualize network performance data—and its ramifications—across your entire organization.

Step 5: Build reports and stop report bloat

Tired of building hundreds of reports that must be continually reworked, updated and maintained? IBM SevOne equips you to create dynamic filters in a single report. Now all the teams in your organization can save time by using the same reports. Customize them by simply selecting the groups of devices that are the most relevant, useful and interesting to stakeholders.

[Learn more](#) about IBM SevOne.

© Copyright IBM Corporation 2024

IBM Corporation
New Orchard Road
Armonk, NY 10504

Produced in the United States of America
May 2024

IBM, the IBM logo, and IBM Cloud are trademarks or registered trademarks of International Business Machines Corporation, in the United States and/or other countries. Other product and service names might be trademarks of IBM or other companies. A current list of IBM trademarks is available on ibm.com/trademark.

This document is current as of the initial date of publication and may be changed by IBM at any time. Not all offerings are available in every country in which IBM operates.

THE INFORMATION IN THIS DOCUMENT IS PROVIDED "AS IS" WITHOUT ANY WARRANTY, EXPRESS OR IMPLIED, INCLUDING WITHOUT ANY WARRANTIES OF MERCHANTABILITY, FITNESS FOR A PARTICULAR PURPOSE AND ANY WARRANTY OR CONDITION OF NON-INFRINGEMENT. IBM products are warranted according to the terms and conditions of the agreements under which they are provided.

