

IBM Storage Defender

Simplify data resilience across your storage estate



Highlights

Enables data resilience and compliance by setting the standard and monitoring needed to meet compliance.

Detects threats early with layered sensors, on AI-enabled hardware, filesystem and backup-based detection.

Provides safe and fast recovery with trusted copy identification, scan prior to recovery, and clean room orchestration.

Business leaders today face a multitude of potential threats to their organizations' data. From data loss caused by hardware failure, user error or sabotage to ransomware, exfiltration and other destructive attacks, an organization's brand and customer relationships are at stake as these threats continue to proliferate. As of 2025, identifying and containing a data breach takes affected organizations an average of 276 days, costing businesses an average of USD 4.44 million.¹

IBM® Storage Defender helps reduce your organization's data loss risks with advanced capabilities for your data wherever it is located across on-premises, cloud, and edge storage infrastructure. It also includes support for a wide range of workloads across your primary and secondary storage.

Storage Defender provides a simple, consolidated view of data resilience status and management that enables you to better address your compliance requirements. Additionally, it provides intelligent early threat detection with integration to popular SIEM tools and enables safe and fast recovery to keep your business running. Storage Defender delivers its capabilities through an integrated SaaS-based management platform, regardless of where your data is stored.

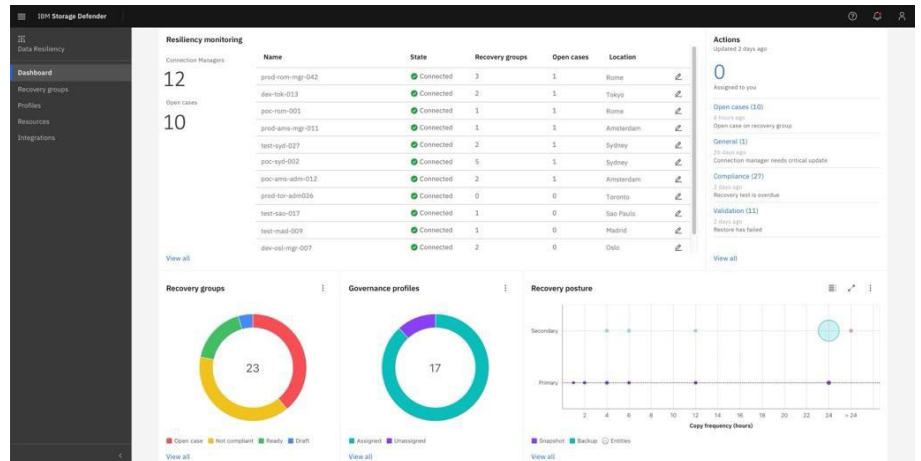


Figure 1. Defender's dashboard enables you to quickly assess your data resilience and compliance situation

Data resilience and compliance

Defender provides a range of features and capabilities to ensure data resilience and compliance. It includes a unified dashboard enabling visibility to workloads such as virtual machines, integration to storage solutions like IBM FlashSystem and Dell PowerMax, as well as the ability to manage your data copies across primary and backup storage.

Defender's role-based access control and encryption help to further ensure data security and compliance with regulatory requirements such as GDPR and SEC mandated cybersecurity incident reporting.

Early threat detection

Defender's early threat detection capabilities help to protect against cybersecurity threats to your business. It utilizes machine learning algorithms to analyze data patterns and identify data anomalies that may indicate a potential threat.

Defender also provides real-time monitoring and alerting, with integration to popular SIEM tools like QRadar and Splunk, enabling security teams to quickly respond to suspicious activities. Additionally, it offers integration with IBM X-Force Threat Intelligence to stay informed about the latest threats and vulnerabilities. Automated incident response capabilities can help to contain and mitigate threats before they cause damage.

Safe and fast recovery

Defender delivers several capabilities that help to minimize data loss and downtime, helping you meet your RTO/RPO objectives. Continuous monitoring of your copies combined with Defender's copy management capabilities enable you to quickly locate the most recent validated and clean copy.

Clean room blueprints enable you to set up and manage an isolated environment where data copies can be thoroughly evaluated before they are used for recovery. Using Defender Data Protect, you can enable the almost instant restore of volumes, objects, and VMs at scale, allowing you to safely and quickly recover data in the event of a disaster or system failure.

Conclusion

Operational resilience for the enterprise

IBM Storage Defender addresses data resilience challenges such as threats posed by malicious actors by providing a comprehensive solution that delivers data resilience and compliance, early threat detection, and safe and fast recovery.

By providing visibility and management of data copies across your storage estate, Defender can help address your compliance challenges. Intelligent early threat detection can detect threats before they impact your business, while powerful capabilities enable safe and fast recovery following an attack.

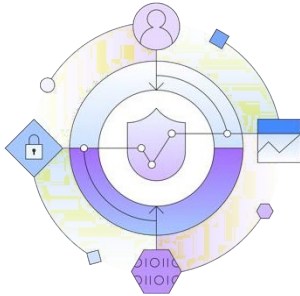
Defender's end-to-end approach to data resilience helps businesses protect their valuable data and minimize downtime caused by cyberthreats and other business disruptions.

Why IBM?

IBM offers a broad portfolio of hardware, software and services to help organizations cost-effectively address their IT infrastructure needs. These include robust data storage solutions to enable always-on, trustworthy storage and help expedite recovery from disasters. Because business needs shift, IBM solutions emphasize interoperability and the integration of new use cases or approaches, from analytics to multisite backup to near-instant recovery.

For more information

To learn more about IBM Storage Defender, contact your IBM representative or IBM Business Partner, or visit ibm.com/products/storage-defender.



[1. Cost of a Data Breach Report 2025, IBM, July 2025](#)

© Copyright IBM Corporation 2025
IBM Corporation
New Orchard Road
Armonk, NY 10504

Produced in the
United States of America
December 2025

Copyright IBM Corporation 2025. IBM, the IBM logo, IBM Flash Core, IBM FlashSystem, and IBM Research are trademarks or registered trademarks of International Business Machines Corporation, in the United States and/or other countries. Other product and service names might be trademarks of IBM or other companies. A current list of IBM trademarks is available on ibm.com/trademark.

This document is current as of the initial date of publication and may be changed by IBM at any time. Not all offerings are available in every country in which IBM operates.

THE INFORMATION IN THIS DOCUMENT IS PROVIDED "AS IS" WITHOUT ANY WARRANTY, EXPRESS OR IMPLIED, INCLUDING WITHOUT ANY WARRANTIES OF MERCHANTABILITY, FITNESS FOR A PARTICULAR PURPOSE AND ANY WARRANTY OR CONDITION OF NON-INFRINGEMENT.

IBM products are warranted according to the terms and conditions of the agreements under which they are provided.

