

From complexity to clarity: IBM Consulting pathways for VMware clients

Your journey combined with our expert guidance builds a roadmap for success

IBM Consulting® recognizes that you're faced with making decisions regarding transforming your VMware environment. With deep expertise in hybrid cloud transformation, IBM Consulting is ideally positioned to guide you on your journey to successfully handle a changing VMware space.

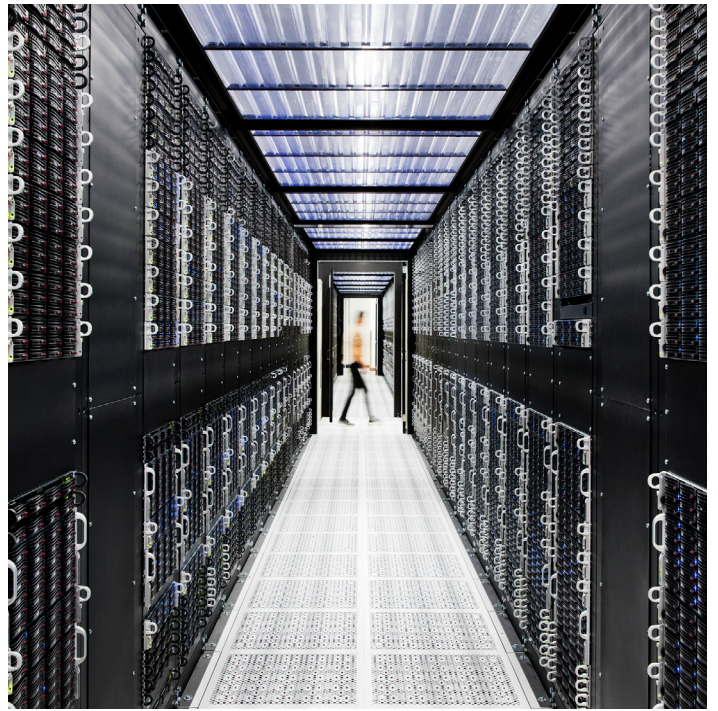
Expert guidance from IBM Consulting can help you choose the right offerings, navigate the licensing modifications, identify the best path forward and manage partnership impacts.

VMware's new offerings

VMware has streamlined its portfolio into two main categories—the VMware Cloud Foundation and the VMware vSphere Foundation as subscription-based offerings. This has changed or will change the landscape of product sets and the product pricing of your virtual environments.

Navigating licensing modifications

When it comes to VMware workloads, IBM can empower you on your journey of addressing available options—whether choosing to continue your path with VMware or looking at alternatives. We'll provide specific examples and best practices based on our experience working with a range of clients, and we'll offer guidance on how to navigate the complex landscape of cloud migration, containerization and virtualization.



Helping ensure a seamless transition

Following the changes in the VMware partnership model, you might determine that you need new pathways for overall partner and customer strategies. Based on our vast experience working with numerous cloud hyperscalers and ISVs, IBM Consulting can support the areas of your business that have been affected by these alterations, helping ensure seamless operations throughout your transition.

Choosing the best pathway forward

Our consultants can help you rearchitect your applications to take advantage of the following cloud-native containers:

- Red Hat® OpenShift®
- Azure Kubernetes Service (AKS)
- Amazon Elastic Kubernetes Service (EKS)
- Google Kubernetes Engine (GKE)
- Oracle Cloud Infrastructure Container Engine for Kubernetes (OKE)
- Red Hat OpenShift Service on AWS (ROSA)
- Red Hat OpenShift on IBM Cloud (ROKS)
- Azure Red Hat OpenShift (ARO)
- IBM Cloud Kubernetes Service



Our expert consultants can also develop hypervisor migration strategies to revirtualize your environment, whether migrating to the VMware cloud on Microsoft Azure, IBM Cloud®, Google Cloud Platform or Oracle Cloud Infrastructure. IBM Consulting can rehost your current VMware environment on hyper-converged infrastructure, such as IBM® Fusion, Nutanix or IBM LinuxONE. We can help you move current applications to public cloud IaaS, leveraging native services like Amazon Elastic Compute Cloud, IBM Cloud Virtual Server, Azure Virtual Machines, Google Compute Engine or Oracle VM.

Any transformation effort can take several months or even years to fully complete. However, there are immediate steps that can be taken to lessen the impact. Technologies like IBM Turbonomic®, an automated resource optimization solution, can help clients optimize their VMware environment to safely increase utilization across shared resources and streamline server utilization without impacting performance.

Through a comprehensive understanding of each client's distinct position regarding its VMware footprint, IBM Consulting devises bespoke recommendations. These range from assessment and advisory services to migration, modernization and application management—all focused on minimizing risks and promoting sustainable growth. IBM Consulting supports VMware clients undergoing transitions with smart pathways to maintain continuity, grow the business and embrace innovation.

Take the first step

Join a Rapid VMware strategy and assessment session to explore VMware future pathways to drive business success and mitigate risk.

[Register for a session →](#)

© Copyright IBM Corporation 2024. IBM, the IBM logo, IBM Consulting, IBM Cloud, and Turbonomic are trademarks or registered trademarks of IBM Corp., in the U.S. and/or other countries.

Microsoft is a trademark of Microsoft Corporation in the United States, other countries, or both.

Red Hat and OpenShift are trademarks or registered trademarks of Red Hat, Inc. or its subsidiaries in the United States and other countries.

VMware, VMware Cloud Foundation, and VMware vSphere are registered trademarks or trademarks of VMware, Inc. or its subsidiaries in the United States and/or other jurisdictions.

This document is current as of the initial date of publication and may be changed by IBM at any time. Not all offerings are available in every country in which IBM operates.