

# Modernize analytics data collection with IBM Aspera

Accelerate the journey to AI

**FAST, RELIABLE, SECURE**  
DATA COLLECTION

**COLLECT DATA FROM ANY**  
**CLOUD OR ON PREMISES**  
**STORAGE SYSTEM**

**INFUSE ANALYTICS RESULTS**  
**ANYWHERE IN THE WORLD**

## Key Capabilities and Features

- Compatible with IBM analytics products
- Instant access to the industry leading cloud object storage
- End-to-end security that protects data throughout the transfer
- Scalable, reliable and ultra-fast direct-to-cloud transfer
- Leverage Aspera SaaS solutions, deploy on-premises software, or combine the two for a flexible architecture

## Supported Deployment Environments

- On-premises
- Cloud
- Hybrid cloud

IBM Aspera software accelerates your processes to collect data for analytics, and infusing the resulting insights into business practices. Traditional analytics workflows collect data by relying on transfer processes that are slow, unreliable, and expose your intellectual property to unnecessary security risks. Aspera offers reliable and secure high-speed data transfer to quickly transfer large amounts of data to, from, or between any analytics platform, such as IBM Cognos Analytics, Db2 Data Warehouse, Cloud Pak for Data, Watson Studio, or Netezza.

### Dramatically reduce your collection time - Move 100TB in 24 hours

Aspera offers unrivaled performance for collecting large files and big data sets across any distance. Reduce transfer durations from days to hours, or hours to minutes. Over a 10Gbps network, organizations can move 100TB in 24 hours regardless of distance or packet loss. To achieve large these large transfers, Aspera FASP protocol scales each transfer linearly with bandwidth, and integrated clustering scales out demand across redundant servers and clients. Aspera Sync technology can be used to automatically collect new data after large, one-time collections.

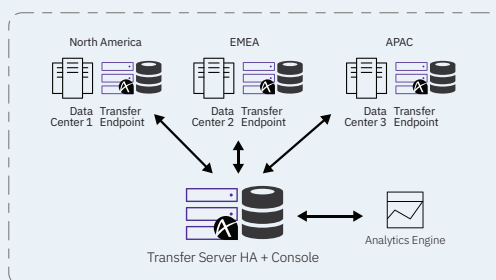
### Collect data from any cloud or on premises storage system

With Aspera, users can easily move data across a hybrid cloud infrastructure. Whether the information resides in a public cloud or in an on-premises data center, Aspera can quickly transfer it to your analytics platform. A centralized portal provides a global view of all analytics data that was transferred using Aspera, or is currently connected to an Aspera transfer server.

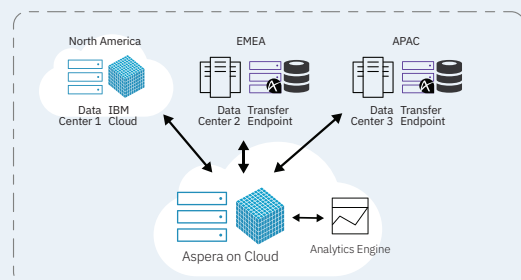
### Securely infuse analytics results anywhere in the world

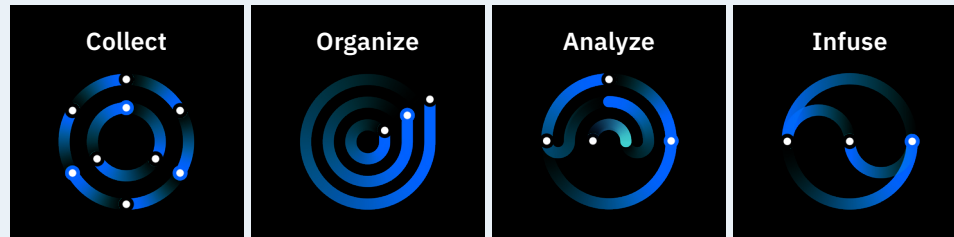
To rapidly and securely distribute the results of an analytics workflow, Aspera provides a robust solution for distribution across the globe. Enterprise-grade security protects valuable data during the entire transfer. Aspera's technology platform supports a complete end-to-end security model: authentication, encryption in-transit and at-rest using strong cryptography, data integrity verification to protect against man-in-the middle attacks, and FIPS 140-2 compliance.

## On-Premises Collection/Infusion of Data



## Data Collection/Infusion to Hosted SaaS Environment



**Journey to AI workflow****with Aspera****Collect**

- Eliminate common data transfer bottlenecks during collection
- Rapidly collect all input data, regardless of size
- Overcome challenges of long distance transfer from sources anywhere in the world

**Infuse**

- Integrate analytics results into your business processes without delay
- Secure high-value, confidential business insights
- Automate real time delivery of results anywhere around the world

**Compatible with IBM analytics products**

- Db2 Warehouse
- Cloud Pak for Data
- Integrated Analytics System
- Netezza
- Cognos Analytics
- Planning Analytics
- Watson Studio

**Instant access to the industry-leading cloud object storage**

- Support for leading public clouds - IBM Cloud, AWS, Azure, and Google Cloud Storage.
- Platform-specific role based access control - Connect to cloud storage via its native identity system.
- Support for advanced cloud storage features - AWS S3, Infrequent Access, Reduced Redundancy, and KMS (Server side key), Azure Files storage, Cool Storage, ICOS.

**End-to-end security that protects data throughout the process**

- Built-in encryption – over-the-wire encryption and optional encryption-at-rest.

- Secure authentication and access control – built in multi-tenant support implemented using private cloud credentials. Support for configurable read, write, and listing access per user account.
- Integrity verification - data integrity verification for each transmitted block.

**Scalable, reliable and ultra-fast direct-to-cloud transfer**

- Performance at any distance – Maximum speed single stream transfer, independent of round-trip delay and packet loss (500ms / 30% packet loss+), up to the I/O limits of the cloud platform.
- Adaptive bandwidth control – Network and disk congestion control provides automatic adaptation of transmission speed to available network b/w and I/O throughput to/from storage platform, to avoid congestion and overdrive.
- Automatic resume – Automatic retry and checkpoint resume of any transfer from point of interruption.
- Concurrent transfer support – Auto scale transfers using dynamic, real-time scaling and automatic load balancing.

**Questions?** Learn more at [www.ibm.com/aspera](http://www.ibm.com/aspera) or contact Aspera Sales at [aspera-sales@ibm.com](mailto:aspera-sales@ibm.com)