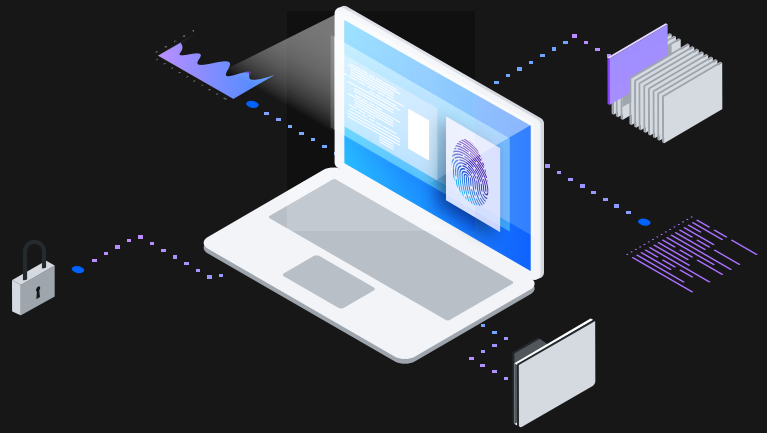


IBM Z Forward Acceleration Initiative

IBM Z® Forward Acceleration Initiative helps clients make the most of their IBM Z investment and accelerate the transformation of their IT infrastructure and expedite the adoption of new technologies.



IBM Z Forward Acceleration Initiative enables clients to automatically **earn rewards on eligible purchases of IBM z15™ and LinuxONE III systems**. Clients will earn one reward per system, with their first purchase earning three bonus rewards. Each reward is valued at approximately one week of onsite or remote services from IBM Systems Lab Services.

IBM Z Forward Acceleration Initiative rewards can be used for select services focused on expediting the adoption of new technologies. IBM Z Forward Acceleration Initiative services offerings leverage the proven expertise of IBM Systems Lab Services consultants.

IBM Z Forward Acceleration Initiative Services

- Pervasive Encryption Readiness Assessment
- IBM Z Key Management Planning
- Pervasive Encryption Jumpstart Implementation
- Data Privacy Passports Planning
- Data Privacy Passports Jumpstart Implementation
- Cyber Vault for IBM Z Services
- Red Hat OpenShift Implementation
- IDAA Implementation on LinuxONE or Linux on Z
- Linux Migration Services
- Hyper Protect Digital Asset Platform Implementation



Earn rewards

IBM Z Forward Acceleration Initiative rewards are earned with the purchase of eligible IBM z15 or LinuxONE III systems, including 8561-T01 and 8561-LT1 systems.

Contact your IBM representative or IBM Business Partner® to make an eligible system purchase.

Use rewards

IBM Z Forward Acceleration Initiative rewards can be used for select services that are focused on accelerating the transformation of IT infrastructure and expediting the adoption of new technologies. Rewards expire one year after system ship date.

Contact your IBM Systems Lab Services to get started using your IBM Z Forward Acceleration reward and for full program details.

Learn more

Contact your IBM representative or IBM Business Partner, or email Systems Lab Services at: ibmsls@us.ibm.com

86030886-USEN-01

