



6 reasons financial services
companies choose
IBM SevOne Network
Performance Management

1. Automated baselining

Financial services companies typically operate global networks with tens of thousands of devices and millions of indicators. Changes in use levels, server memory leaks and other network abnormalities cause service-impacting events. Yet, it's easy for network operations teams to miss subtle changes in behavior when they rely on alerts based on predetermined, static thresholds. When detected, these subtle changes often foreshadow a potential service disruption.

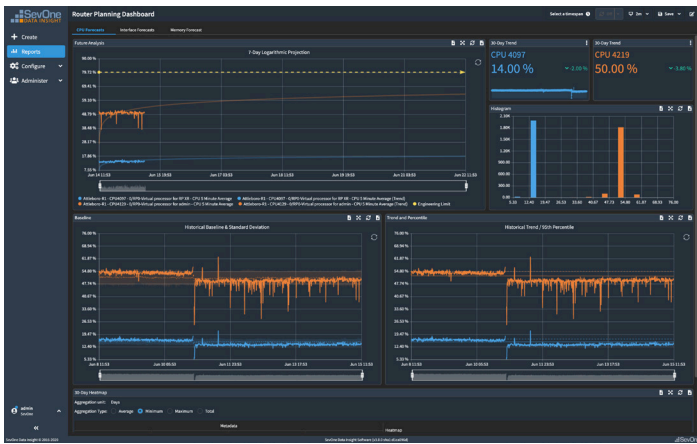
IBM® SevOne® Network Performance Management (NPM) increases the efficiency of network operations teams by establishing a baseline for every performance metric it collects. This baseline provides teams with an understanding of normal behavior for any given time of day and day of the week. Alerts based on standard deviation from baseline performance notify users when exception conditions occur to drive more reliable prediction of service-impacting events.

2. Speed at scale

How does SevOne NPM define scalability? The key metric is speed. Many products can scale, but if they can't maintain their speed, then scale is meaningless. "Speed at scale" is how we define scalability.

How do we deliver speed at scale? Traditional monitoring tools use a collection layer that may include several servers, but all the collected data is consolidated into a single central database. SevOne NPM uses innovative architecture with a peer-to-peer way of collecting and reporting network performance data. Every virtual or cloud-based SevOne NPM software appliance manages all aspects of monitoring the devices it is asked to monitor. When one appliance is near capacity, just add another and another, and so on. Our largest customers monitor tens of thousands of devices and billions of data points a day, with the ability to run reports in seconds. Anything less is unacceptable.





3. Capacity planning

To meet the needs of today’s financial services environment, network operations and engineering teams need to ensure their network infrastructure is operating at peak efficiency during both the slowest and busiest of times. Downtime can mean loss of business, loss of revenue, and most importantly, loss of customers.

To achieve dynamic capacity planning, teams must be able to answer questions such as:

- How much network bandwidth does the business need?
- How will our VPN concentrators cope with new remote workers?
- Which network interfaces will be most utilized 30 days from now?

SevOne NPM keeps polled metrics for up to a year and creates reports projecting future traffic with different trending options such as linear, exponential and logarithmic. By contrast, traditional monitoring tools aggregate and summarize data after seven days. Less granularity means less value.

“As we evaluated vendors in this space, we found SevOne had a new way to approach the collection of performance data and prediction of potential service degradation.”

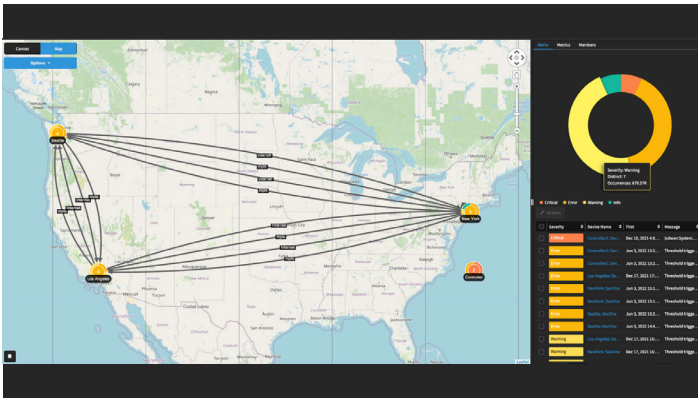
Lou Modano

Senior Vice President
Global Infrastructure Services, NASDAQ

4. High granularity

One of the main challenges faced by network operations teams in financial services is monitoring bursty traffic — a situation that occurs when a significant number of queued packets are delivered within a short time period. Bursty traffic can cause network latency, jitter and even packet loss — each a significant issue for financial services-based networks.

SevOne NPM supports high-frequency polling, which allows network teams to collect performance metrics more frequently. For many of our customers, polling every minute is now the norm. Some of our customers are beginning to trial network streaming telemetry, where instead of polling for data, network devices stream their performance data — as fast as every second. Rest assured, whether you’re polling every 5 minutes or every single minute, SevOne NPM will be there to help you along the way.



5. Support next-generation networks

Financial services network operations and engineering teams are embracing next-generation network technologies including software-defined wide area networks (SD-WANs) and data centers along with wifi access. Such technologies help them deliver unmatched user experiences to network services while providing business-critical applications to their increasingly mobile workforce and customers. Simple Network Management Protocol (SNMP)-focused traditional network monitoring systems aren't designed to meet the needs of these emerging technologies.

With broad support for the leading SD-WAN, software-defined network (SDN) and wifi vendors, coupled with existing SNMP support, SevOne NPM is prepared to help financial services companies monitor the networks of today and their transition to the networks of tomorrow.



6. Modern integration

Integrating network performance data with third-party IT operational software is an essential ingredient in modern network operations. Often lacking the flexibility to integrate with modern IT operations tools using application programming interfaces (APIs) and continuous data streams, traditional network monitoring systems can quickly become siloed, creating an environment of individual systems that impacts overall operational efficiency.

SevOne NPM gives IT teams flexibility in how they integrate network performance data with their daily operational tools and processes. The solution helps teams modernize their approach to network and IT operations with integrations including:

- Use of a powerful API to integrate network performance data with third-party applications
- Streaming collected metrics to a customer-supplied Apache Kafka bus for integration with data lakes
- Visually integrating log analysis data from Splunk and ELK-based deployments alongside SevOne NPM-based metric and flow data

Why IBM?

IBM SevOne Network Performance Management (NPM) provides a single source of truth to help assure network performance across multivendor, enterprise, communication and managed services provider (MSP) networks.

[Learn more](#) about SevOne NPM and how it can help your organization monitor and manage the performance of both your existing and next-generation network and infrastructure resources more effectively.



© Copyright IBM Corporation 2022

IBM Corporation
New Orchard Road
Armonk, NY 10504

Produced in the
United States of America
July 2022

IBM, SevOne, and the IBM logo are trademarks of International Business Machines Corp., registered in many jurisdictions worldwide. Other product and service names might be trademarks of IBM or other companies. A current list of IBM trademark is available on the Web at “Copyright and trademark information” at ibm.com/trademark.

This document is current as of the initial date of publication and may be changed by IBM at any time. Not all offerings are available in every country in which IBM operates.

THE INFORMATION IN THIS DOCUMENT IS PROVIDED “AS IS” WITHOUT ANY WARRANTY, EXPRESS OR IMPLIED, INCLUDING WITHOUT ANY WARRANTIES OF MERCHANTABILITY, FITNESS FOR A PARTICULAR PURPOSE AND ANY WARRANTY OR CONDITION OF NON-INFRINGEMENT. IBM products are warranted according to the terms and conditions of the agreements under which they are provided.

The client is responsible for ensuring compliance with laws and regulations applicable to it. IBM does not provide legal advice or represent or warrant that its services or products will ensure that the client is in compliance with any law or regulation.

