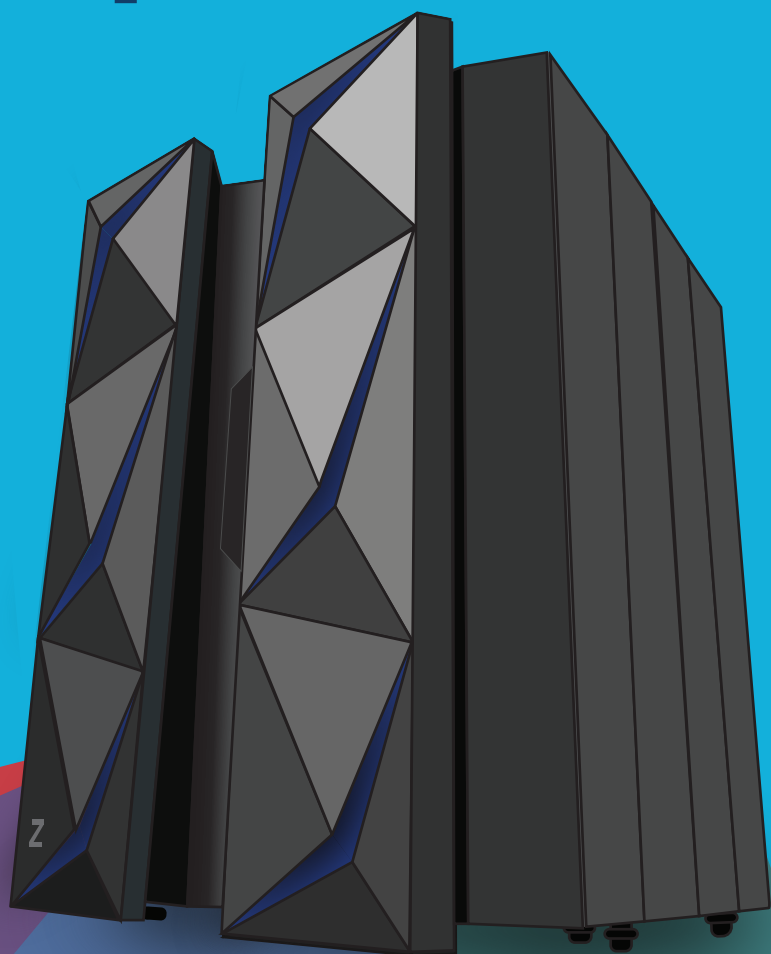


Improved availability, performance and security with IBM WebSphere z/OS

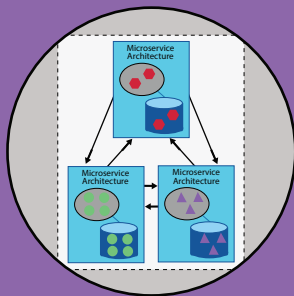
Mainframe Modernization

Your IBM mainframes represent valuable assets to your business. WebSphere Application Server z/OS helps modernize the mainframe, allowing you to more easily incorporate the mainframe into your modern architectural plans. The strengths of the mainframe contribute even more to your business goals.



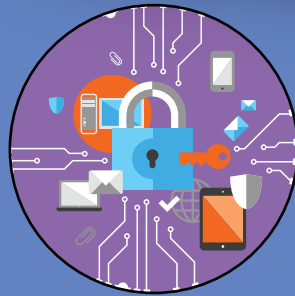
Agility

WebSphere Application Server z/OS can be dynamically provisioned, dynamically modified, and dynamically deploy applications. This allows the operational runtime to align with agile development practices, as well as provide improved responsiveness to business needs.



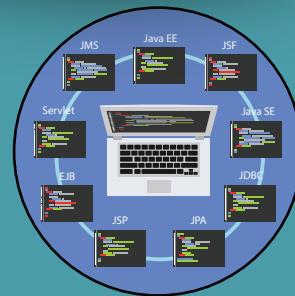
Modern Architectural Patterns

Provides the capability of hosting applications from across the architectural spectrum, including the latest designs around APIs and microservices. WebSphere Application Server z/OS also enables you to host all elements of your architecture on the z/OS mainframe where it may make the best business sense, or a distributed system, or in the cloud.



Security

IBM Z has a long history of providing strong security for sensitive data and applications. The new IBM z14 provides security with pervasive encryption of all application and database data, in-flight and at-rest, with no application changes and no impact to SLAs. This enhances security and helps reduce the cost of complying with security requirements.



Open Standards

Open standards enable adoption of programming models across vendors and platforms. This allows you to facilitate the creation of tools to develop and monitor applications. Another feature is the flexibility to design and deploy according to the needs of your business. WebSphere Application Server z/OS is an open standards Java runtime with application APIs consistent across all platforms.

Experience the power of WebSphere Application Server z/OS

<https://www.ibm.com/cloud-computing/products/hybrid-it-management/application-server/>