

IBM Aspera High-Speed Transfer Server

Universal data transfer server for desktop browsers, mobile clients, and web

Key benefits & capabilities

- Robust and reliable transfers with automatic retry and resume logics
 - Highly scalable, with thousands of concurrent transfer sessions and multi gigabit-per-second aggregate throughput.
 - Maximum control, even resource usage, and flexibility configurations
 - Guaranteed delivery times with “minimum transfer rate”
 - Leverage Aspera’s SDK via an annual development subscription
-

IBM® Aspera® High-Speed Transfer Server is an industry software standard for transferring files, directories and large data sets with many users over any distance on wide area networks. It combines next-generation transport with exceptional transfer and user management capabilities for enterprise applications.

With the patented FASP® transport technology at its core, the High Speed Transfer Server software delivers unmatched performance with maximum transfer throughput independent of distance and network conditions. It achieves speeds up to 100s of times faster than FTP/SCP, with end-to-end security and exceptional bandwidth control.

IBM Aspera High-Speed Transfer Server can connect to IBM Aspera cloud-based applications to provide highly scalable, on demand storage and computing capacity.

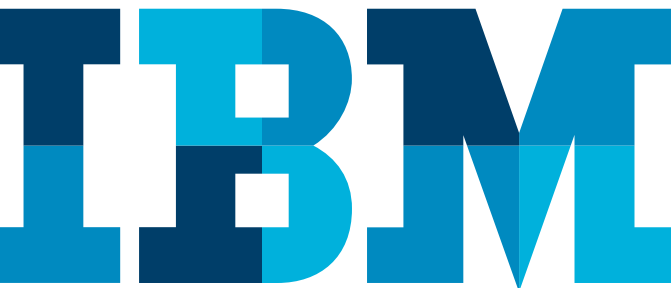
Fast, reliable transfers

Manually or automatically transfer files and directories or schedule repeating transfers. Allocate bandwidth based on transfer priority. Enable connections with a variety of client options including desktop applications, and mobile apps. Provide worry-free experience with automatic retry-and-resume from the point of interruption.

Thanks to a set of rich APIs, the Aspera High-Speed Transfer Server can be embedded into any web application to serve as the highspeed backbone for transfers of file-based data over public Internet or private IP links.

Scalable and efficient transfer environment

High-performance FASP transport supports thousands of concurrent transfer sessions and delivers solid throughput over high-loss and high-delay networks and maximizes utilization of allocated bandwidth on low capacity and on multi-gigabit networks.



File-based workflow automation

Create repeatable and scheduled transfers (one time and recurring) using templates in Aspera Console. Develop custom pre and post-transfer processing with hot folders, scripts, web services and thirdparty embedded clients. Accept non-Aspera file transfers and automatically forward files to any other Aspera server.

Enterprise-grade security

Aspera FASP transfer protocol protects your vital digital assets with thorough SSH authentication, in-transit and atrest encryption, and data integrity for each transmitted block.

Granular administrative options

Server administrators can create user accounts with varied levels of access control, defining “root” directory, security requirements and bandwidth profiles. Admin-level users have access to real-time transfer monitoring, detailed reporting and control over aggregate and per-flow transfer rate caps and prioritization.

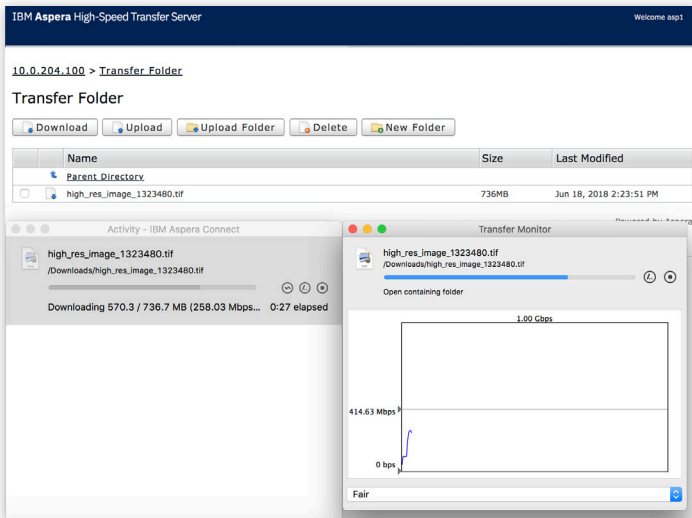


Figure 1: The High Speed Transfer Server web-based directory and transfers viewed in the High Speed Transfer Server web browser plug-in

Features and benefits

Versatile file transfers

- Transfer initiation from web browser, mobile app, desktop client, endpoint, command line, or third-party embedded client.
- Guaranteed delivery times with “minimum transfer rate” configurable via transfer priority levels.
- High-availability cluster configuration options (active/active or active/ passive) and reliable deliveries with automatic retry and resume of partial or failed transfers.
- Simultaneous multi-location file delivery using multi-point transfers.
- Automatic, fast and lossless inline compression reduces data set transfer sizes, providing further boost to Aspera’s industry leading transfer performance.
- Maximum control, even resource usage, and faster transfer times with configurable options for controlling the intra-file ‘splitting’ over the parallel sessions.

Cloud Ready

- Can be deployed in cloud infrastructure, taking advantage of unlimited storage and transfer scale-out and with optimized cloud I/O for maximum transfer speeds.
- Easy deployment on Amazon Web Services, IBM Cloud, Microsoft Azure and the Google Cloud.

Transfer automation

- Create repeatable and scheduled transfers (one-time and recurring) through templates using Aspera Console.
- Utilize hot folder services and define custom pre- and post-delivery functionality using scriptable command line, web services or SDK library.
- Automatically forward uploaded files to any other Aspera node, even when files arrives via non-Aspera means (e.g. FTP deliveries).

IBM Cloud

Datasheet

Comprehensive administration

- Create unlimited number of users, define access rights and transfer settings for each one, and enforce security settings based on organizational requirements.
- Set transfer priorities and define aggregate or per-flow bandwidth allocation; vary transfer settings based on time-of-day/day-of-week, per user or group, and by client IP address or metadata.
- Monitor all incoming and outgoing transfers in real-time; cancel, pause, resume or reorder transfers in the queue on the fly; configure email notifications and delivery confirmations on client and server.
- Using Aspera Console, access detailed server transfer logs in a centralized database and run pre-defined or custom reports for billing and auditing.

Bullet-proof security

- Keep your business-critical digital assets safe with Aspera's enterprise-grade security features, which include thorough SSH authentication, FIPS 140-2 Level 1 compliant cryptographic module, and data integrity verification for each transmitted block.
- AES-128/192/256 data encryption in-transit and at-rest., both client side and server side, with configurable per-user encryption setting and minimum password strength.

Supported platforms

Server

- Windows 7 with service pack 1, 8.1, 10, or Windows Server 2008 R2 with service pack 2, 2012 R2, 2016
- Linux 64-bit: Ubuntu 14.04 LTS, 16.04 LTS, 17.10; RHEL 6-7; CentOS 6-7; SLES 11-12; Debian 7-9; Fedora 26-27; Kernel 2.4 or higher and Glibc 2.5+
- Mac OS X: OS X 10.11, macOS 10.12 (Sierra), 10.13 (High Sierra)
- AIX: 6.1, 7.1
- Linux on Z 64-bit: RHEL S/390 Server release 5.11

Browsers

- Windows: Chrome 62-64, Microsoft Edge 39-41, Internet Explorer 11, Firefox 56-58, Firefox ESR 52
- Mac OS X: Chrome 62-64, Firefox 56-58, Safari 11, Firefox ESR 52
- Linux: Chrome 62-64, Firefox 56-58, Firefox ESR 52

About IBM Aspera

IBM Aspera offers next-generation transport technologies that move the world's data at maximum speed regardless of file size, transfer distance and network conditions. Based on its patented, Emmy® award-winning FASP® protocol, Aspera software fully utilizes existing infrastructures to deliver the fastest, most predictable file-transfer experience. Aspera's core technology delivers unprecedented control over bandwidth, complete security and uncompromising reliability. Organizations across a variety of industries on six continents rely on Aspera software for the business-critical transport of their digital assets.

For more information

On IBM Aspera solutions, please visit us at <https://www.ibm.com/cloud/high-speed-data-transfer> or contact aspera-sales@ibm.com.



© Copyright IBM Corporation 2018

IBM Corporation
Software Group (or appropriate division, or no division)
Route 100
Somers, NY 10589

Produced in the United States of America
Aug 2018

IBM, the IBM logo and ibm.com are trademarks of International Business Machines Corp., registered in many jurisdictions worldwide. Other product and service names might be trademarks of IBM or other companies.

A current list of IBM trademarks is available on the Web at "Copyright and trademark information" at www.ibm.com/legal/copytrade.shtml.

This document is current as of the initial date of publication and may be changed by IBM at any time. Not all offerings are available in every country in which IBM operates.

THE INFORMATION IN THIS DOCUMENT IS PROVIDED "AS IS" WITHOUT ANY WARRANTY, EXPRESS OR IMPLIED, INCLUDING WITHOUT ANY WARRANTIES OF MERCHANTABILITY, FITNESS FOR A PARTICULAR PURPOSE AND ANY WARRANTY OR CONDITION OF NON-INFRINGEMENT. IBM products are warranted according to the terms and conditions of the agreements under which they are provided.



Please Recycle
