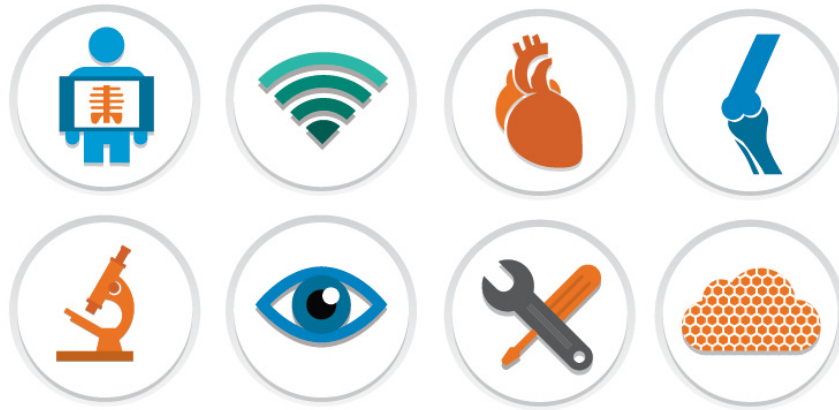


innovative imaging™



Merge iConnect® Access V. 4.1

IHE INTEGRATION STATEMENT

Merge Healthcare
900 Walnut Ridge Drive,
Hartland, WI 53029
USA

MERGE

877.44.MERGE • merge.com

 [@MergeHealthcare](https://twitter.com/MergeHealthcare)

 linkedin.com/company/merge-healthcare

 facebook.com/MergeHealthcare

Copyright 2014 Merge Healthcare Incorporated
Unauthorized use, reproduction, or disclosure is prohibited.

This document has been prepared by Merge Healthcare Incorporated, for its customers. The content of this document is confidential. It may be reproduced only with written permission from Merge Healthcare. Specifications contained herein are subject to change, and these changes will be reported in subsequent revisions or editions.

The software that is the subject matter of this document is an advisory device and is not designed or intended to substitute for the skill, knowledge or experience of the users of the software.

Cedara® and Merge Healthcare® are registered trademarks of Merge Healthcare Incorporated.

iConnect® Access is a trademark of Merge Healthcare. The names of other products mentioned in this document may be the trademarks or registered trademarks of their respective companies.

CAUTION: U.S. federal law restricts this device to sale by, or on the order of, a physician.



NOTE: The *iConnect® Access* software complies with the MDD Council Directive 93/42/EEC of 14 June 1993.



EMERGO EUROPE (Regulatory Affairs Only)

Molenstraat 15
2513 BH, The Hague
The Netherlands
Tel: +31 (0)70 235 8570
Fax: +31 (0)70 346 7299

Australian Sponsor (Regulatory Affairs Only)

Emergo Asia-Pacific Pty Ltd.
Darling Park, Tower II, Level 20
Sydney, NSW 2000 Australia
Tel: +61 (0) 2.9006.1662
Fax: +61 (0) 2.9006.1010

For application support or to report issues with user documentation, contact Customer Support:

- In North America: call toll-free 1-877-741-5369
- Outside of North America: +31.40.299.0773
- Email: support@merge.com

Part	Date	Revision	Description
ICA-6408	February 2014	1.0	Initial version



IHE Integration Statement			
Vendor	Product Name	Version	Date
Merge Healthcare	iConnect Access	4.1	2014/02/10

This product implements all transactions required in the IHE Technical Framework to support the IHE Integration Profiles, Actors and Options listed below:

Integration Profile	Actor	Integration Profile Option
Audit Trail and Node Authentication	Secure Application	None
Consistent Time	Time Client	None
Patient Demographics Query	Patient Demographics Consumer	None
Patient Identifier Cross-referencing for MPI	Patient Identifier Cross-reference Consumer	None
Cross-Community Access for Imaging	Imaging Document Consumer	None
Cross-Enterprise Document Sharing	Document Consumer	None
Cross-Enterprise Document Sharing for Imaging	Imaging Document Consumer	None
Cross-Enterprise Document Sharing of Scanned Documents	Content Consumer	None

Internet address for vendors IHE information: http://www.merge.com	
Links to Standards Conformance Statements for the Implementation	
HL7	
DICOM	http://www.merge.com/Support/Resources/DICOM-Conformance-Statements.aspx
Link to general information on IHE: www.ihe.net	