

# IBM Aspera Enterprise

*Unified high-speed data transfer solution for hybrid environments for use by distributed teams and in mission-critical workflows*

---

## Key benefits & capabilities

- Highly scalable, reliable transfers, supporting thousands of concurrent transfer sessions and multi gigabit-per-second aggregate throughput.
  - Full complement of enabling server, desktop, and mobile software to meet the transfer needs of all users inside and outside of an organization
  - Aspera data streaming and file synchronization included
  - Leverage Aspera's APIs and SDKs for custom applications and deep integration
- 

IBM® Aspera® Enterprise is the new industry standard for transferring files and large data sets with intelligent automation and powerful security on managed networks or the public internet. IBM Aspera Enterprise combines next-generation transport technologies with the full suite of IBM Aspera enterprise applications.

With the patented FASP® transport technology at its core, IBM Aspera Enterprise software delivers unmatched performance with maximum transfer throughput independent of distance and network conditions. It achieves speeds up to 100s of times faster than FTP/SCP, with end-to-end security and exceptional bandwidth control.

Aspera Enterprise includes a full IBM Aspera High-Speed Transfer Server with no limits on the number of transfer users along with Aspera capabilities for synchronizing files and delivering large streams of data and high bitrate video.

## Fast, reliable transfers

Manually or automatically transfer files and directories or schedule repeating transfers. Allocate bandwidth based on transfer priority. Enable connections with a variety of client options including desktop applications, and mobile apps. Provide worry-free experience with automatic retry-and-resume from the point of interruption.

## Full complement of enabling technology

In addition to the Aspera High-Speed Transfer Server with data streaming and synchronization capabilities, IBM Aspera Enterprise also includes:

- unlimited installations of Aspera web applications, including IBM Aspera Faspex and IBM Aspera Orchestrator;
- unlimited installations and users of Aspera's client software, e.g., IBM Aspera Connect, IBM Aspera Drive, and IBM Aspera Add-in for Microsoft Outlook; and
- unlimited installations of IBM Aspera Proxy and IBM Aspera HTTP Gateway to protect and proxy Aspera connections.



## Comprehensive workflow automation

Create repeatable and scheduled transfers (one time and recurring) using templates in IBM Aspera Console. Develop custom pre- and post-transfer processing with Aspera transfer server hot folders, scripts, web services and third party embedded clients. Create sophisticated, rules-based workflows via a simple, intuitive graphical user interface using Aspera Orchestrator.

## Enterprise-grade security

IBM Aspera's FASP transfer protocol protects your vital digital assets with thorough HTTPS authentication for session initialization and in-transit and at rest encryption, with data integrity for each transmitted block.

## Protect your network and enable all users

Unlimited deployments of IBM Aspera Proxy and HTTP Gateway are included with IBM Aspera Enterprise. Use Aspera Proxy to keep corporate networks secure and hide users' IP addresses with a single control point that enables all Aspera FASP transfers.

With HTTP Gateway, users that are unable to install Aspera client software can still use HTTPS for the “last mile” while still realizing the power of Aspera FASP transfers over the network.

## Features and benefits

### Versatile file transfers

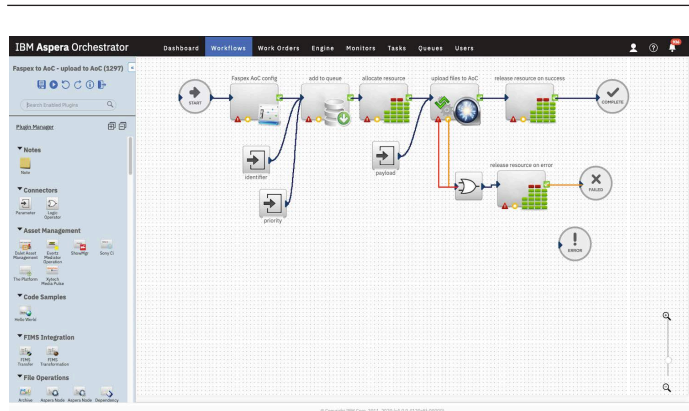
- Transfer initiation from web browser, mobile app, desktop client, endpoint, command line, or third-party embedded client.
- Guaranteed delivery times with “minimum transfer rate” and network behavior configurable via transfer priority levels.
- High-availability cluster configuration options (active/active or active/ passive) and reliable deliveries with automatic retry and resume of partial or failed transfers.
- Simultaneous multi-location file delivery using multi-point transfers.
- Automatic, fast and lossless inline compression reduces data set transfer sizes, providing further boost to Aspera’s industry leading transfer performance.
- Maximum control of resource usage, and even faster transfer times with configurable options for controlling the intra-file ‘splitting’ over the parallel sessions.

### Cloud ready

- Can be deployed in cloud infrastructure to take advantage of unlimited cloud object storage and transfer scale-out, with optimized cloud I/O that provides the maximum transfer speeds supported by each cloud provider.
- Easy deployment on Amazon Web Services, IBM Cloud, Microsoft Azure and Google Cloud Platform.

### Included software and clients

- IBM Aspera High Speed Transfer Server with data streaming and unlimited file synchronization capabilities
- IBM Aspera Faspex for package delivery
- IBM Aspera Shares for user browsing of file storage
- IBM Aspera Console for monitoring transfers
- IBM Aspera Orchestrator for workflow automation
- IBM Aspera Proxy for network protection
- IBM Aspera HTTP Gateway for “last mile” HTTPS transfers
- IBM Aspera Multi-Client Access for desktop clients, including Aspera Drive, Aspera Cargo, and Aspera Add-in for Microsoft Outlook



**Figure 1:** IBM Aspera Orchestrator, part of IBM Aspera Enterprise, has a wide range of plugins and a GUI-based interface to create sophisticated transfer workflows

## IBM Cloud

### Comprehensive administration

- Create unlimited number of users, define access rights and transfer settings for each one, and enforce security settings based on organizational requirements.
- Set transfer priorities and define aggregate or per-flow bandwidth allocation; vary transfer settings based on time-of-day/day-of-week, per user or group, and by client IP address or metadata.
- Monitor all incoming and outgoing transfers in real-time; cancel, pause, resume or reorder transfers in the queue on the fly; configure email notifications and delivery confirmations on client and server.
- Using Aspera Console, access detailed server transfer logs in a centralized database and run pre-defined or custom reports for billing and auditing.

### Built-in security

- Keep your business-critical digital assets safe with Aspera's enterprise-grade security features, which include thorough SSH authentication, FIPS 140-2 Level 1 compliant cryptographic module, and data integrity verification for each transmitted block.
- AES-128/192/256 data encryption in-transit and at-rest., both client side and server side, with configurable per-user encryption setting and minimum password strength.

## Supported platforms

### Server

- Windows 64-bit: Windows Server 2012, 2016, 2019.
- Linux 64-bit: Ubuntu 14.04 LTS, 16.04 LTS, 17.10. RHEL 6-8. CentOS 6-7. SLES 11-12. Debian 7-9. Fedora 26-27. Kernel 2.4 or higher and Glibc 2.5+
- Mac OS X: OS X 10.11 (El Capitan), macOS 10.12 (Sierra), macOS 10.13 (High Sierra), macOS 10.14 (Mojave), macOS 10.15 (Catalina)
- AIX: 7.1, 7.2
- Linux on Z 64-bit: Linux on z Systems s390, 64-bit, Red Hat Enterprise Linux Server (RHEL) 6-7.3, SUSE Linux Enterprise Server (SLES) 11-12

### Browsers

- Microsoft Edge 18+
- Firefox 71+
- Safari 13+
- Google Chrome 78+

## About IBM Aspera

IBM Aspera offers next-generation transport technologies that move the world's data at maximum speed regardless of file size, transfer distance and network conditions. Based on its patented, Emmy® award-winning FASP® protocol, Aspera software fully utilizes existing infrastructures to deliver the fastest, most predictable file-transfer experience. Aspera's core technology delivers unprecedented control over bandwidth, complete security and uncompromising reliability. Organizations across a variety of industries on six continents rely on Aspera software for the business-critical transport of their digital assets.

## For more information

On IBM Aspera solutions, please visit us at <https://www.ibm.com/products/aspera> or contact [aspera-sales@ibm.com](mailto:aspera-sales@ibm.com)



---

© Copyright IBM Corporation 2020

IBM Corporation  
Software Group (or appropriate division, or no division)  
Route 100  
Somers, NY 10589

Produced in the United States of America  
October 2020

IBM, the IBM logo and [ibm.com](http://ibm.com) are trademarks of International Business Machines Corp., registered in many jurisdictions worldwide. Other product and service names might be trademarks of IBM or other companies.

A current list of IBM trademarks is available on the Web at "Copyright and trademark information" at [www.ibm.com/legal/copytrade.shtml](http://www.ibm.com/legal/copytrade.shtml).

This document is current as of the initial date of publication and may be changed by IBM at any time. Not all offerings are available in every country in which IBM operates.

THE INFORMATION IN THIS DOCUMENT IS PROVIDED "AS IS" WITHOUT ANY WARRANTY, EXPRESS OR IMPLIED, INCLUDING WITHOUT ANY WARRANTIES OF MERCHANTABILITY, FITNESS FOR A PARTICULAR PURPOSE AND ANY WARRANTY OR CONDITION OF NON-INFRINGEMENT. IBM products are warranted according to the terms and conditions of the agreements under which they are provided.



Please Recycle