



Whether it's stored in the cloud, the data center or a hybrid environment — all of your data deserves

# IDENTICAL PROTECTION

► Your encryption capabilities should be the same, too. ◀

Data is critical to business.



On-premises                      Cloud                      Hybrid

**Apply encryption tools EVERYWHERE.**  
Make data useless to thieves and criminals.

Data is subject to regulation.



On-premises                      Cloud                      Hybrid

**Be CONSISTENT.**

Encrypt personal information and business data to comply with mandates and best practices.

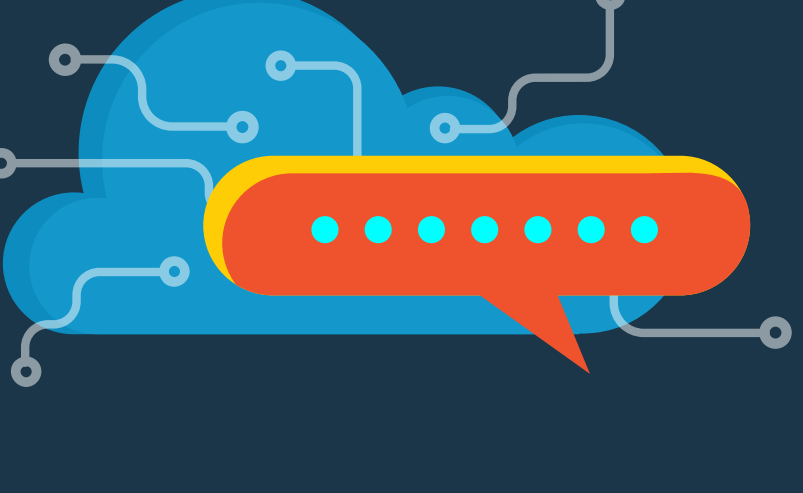
Data needs protection.



On-premises                      Cloud                      Hybrid

**Encryption is DEFENSE.**

Use encryption to keep data secure even when attackers slip behind your defenses.



**Encryption is KEY.**

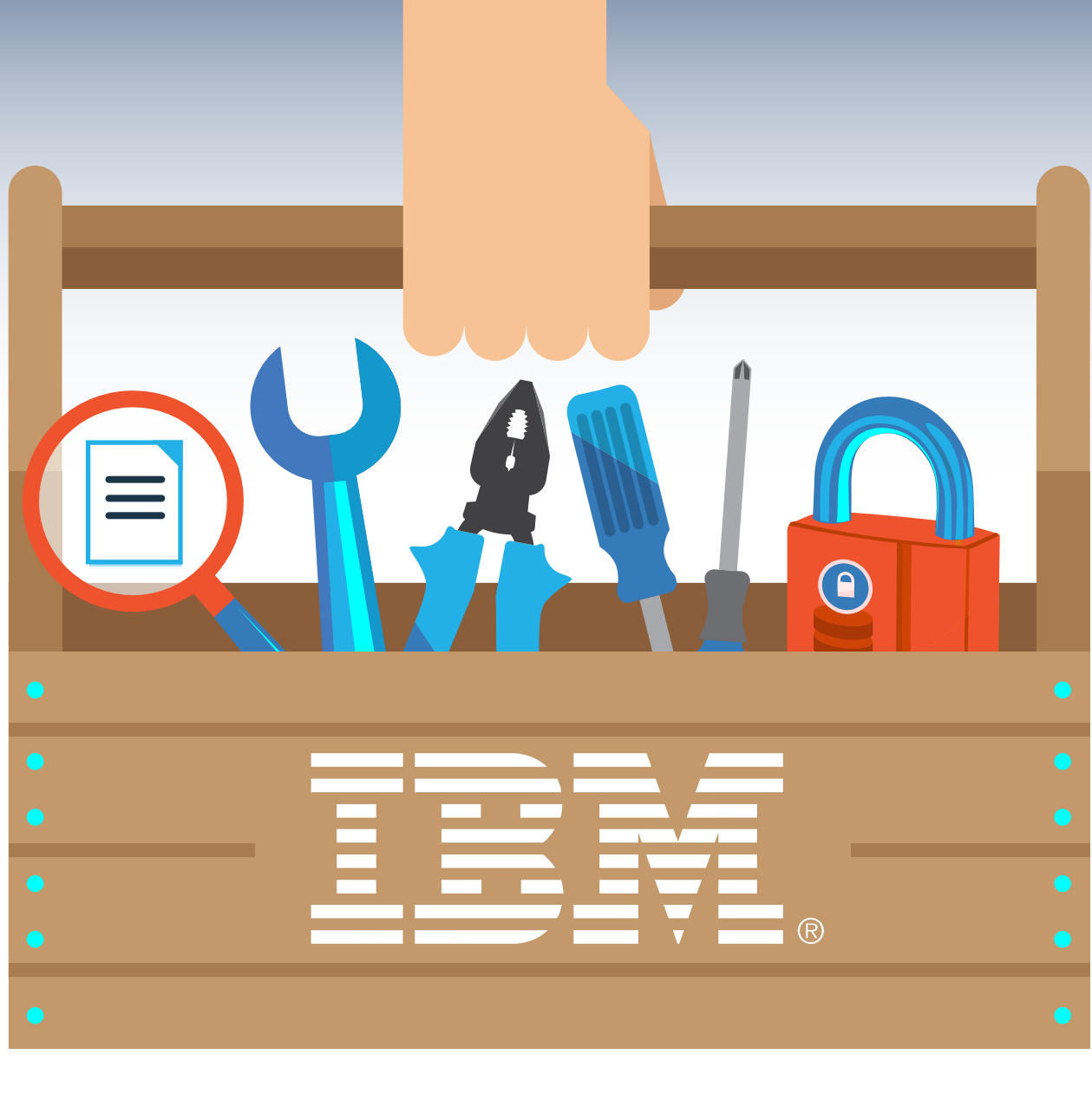
Encryption can permanently deny data access — more cleanly and thoroughly than deletion. Just encrypt your data, tie it to a managed encryption key and then destroy the key. Any route to the data will be destroyed with it.






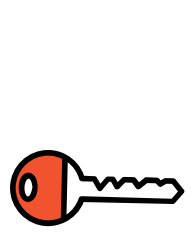



**Encryption is RISK MITIGATION.**

Encryption with key management provides an intelligent and actionable risk mitigation strategy for sensitive and business-critical data by making this data useless to external actors, unauthorized insiders, and cloud service providers.

**Do you have the tools for all that?**



IBM encryption protects your valuable information wherever it resides.

-  **IBM® Guardium® for Database and File Encryption**
-  **IBM Guardium Data Encryption for Db2® and IMS™ Databases**
-  **IBM Guardium for Application Encryption**
-  **IBM Multi-Cloud Data Encryption**
-  **IBM Guardium for Tokenization**
-  **IBM Security Key Lifecycle Manager**
-  **IBM Guardium for Teradata Encryption**

**LEARN MORE** Guard your organization's data with intelligent IBM encryption.

**WATCH** Learn how unified data encryption can reduce the risk of data breaches.

**LISTEN** Learn what you need to know about encryption right now.



© Copyright IBM Corporation 2018. All Rights Reserved. IBM, the IBM logo, ibm.com, Db2, Guardium, and IMS are trademarks or registered trademarks of International Business Machines Corporation in the United States.