

Improve emergency responsiveness with data and AI

For governments, providing public safety in a disaster is paramount. Effective emergency response planning relies on real-time data to help keep residents safe. And improved service for constituents equals potential cost savings.

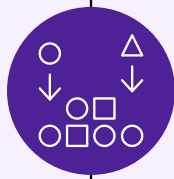


Worldwide disasters have **quadrupled** since 1970¹



Integrate silos for a true team effort

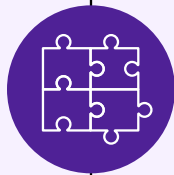
Government data is often stored in **outdated, decentralized data systems**, at disparate locations across various agencies.



44% of states/territories identified **intelligence dissemination** as a gap in 2017²

Bring together today's methodologies + tomorrow's technology

Integrating traditional emergency response applications and processes with newer technologies is an **enormous, yet necessary, challenge**.



57% of IT decision makers struggles with **data silos**³

Eliminate security risks of data migration

Data migration creates security concerns because government agencies manage lots of personal and sensitive information.



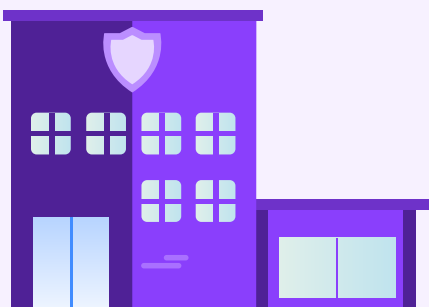
84% of organizations say traditional security **doesn't work on cloud**⁴

Provide accurate predictions with analytic models

Trusted AI that provides predictive recommendations makes all the difference for disaster management by helping responders make better decisions.



75.4% increase Emergency response cognitive/AI spending will **increase 75.4%** from 2016-2021⁵



Data-driven responsiveness

IBM Cloud Pak for Data is an industry-leading platform engineered to enable governments to prepare and respond to emergencies with real-time data. Drive actionable operational insight by modernizing data collection, organization and analysis.

Learn how Cloud Pak for Data (formerly IBM Cloud Private for Data) can help you make faster, data-driven decisions whenever disaster strikes.

ibm.biz/icp4data



1. UN's disaster monitoring system/The Economist

2. Fema

3. <https://data-economy.com/enterprises-wasting-140bn-data-trapped-legacy-systems/> - Research firm Vanson Bourne - <https://www.vansonbourne.com/client-research/27021702ep>

4. Crowd Research Partners

5. IDC