

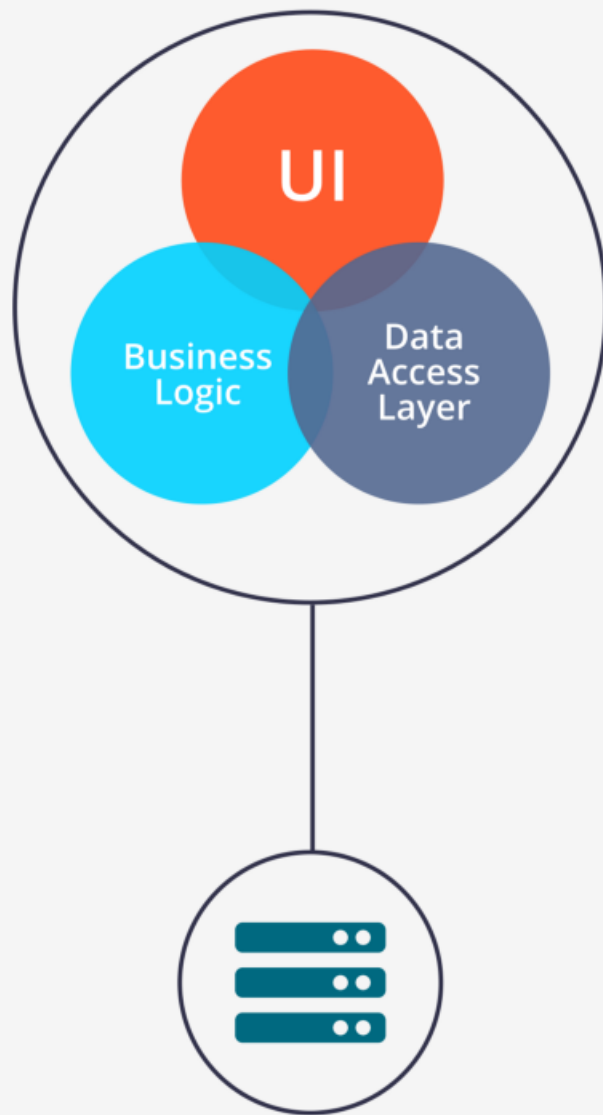
ISTIO

NILESH PATEL (SENIOR OFFERING MANAGER)

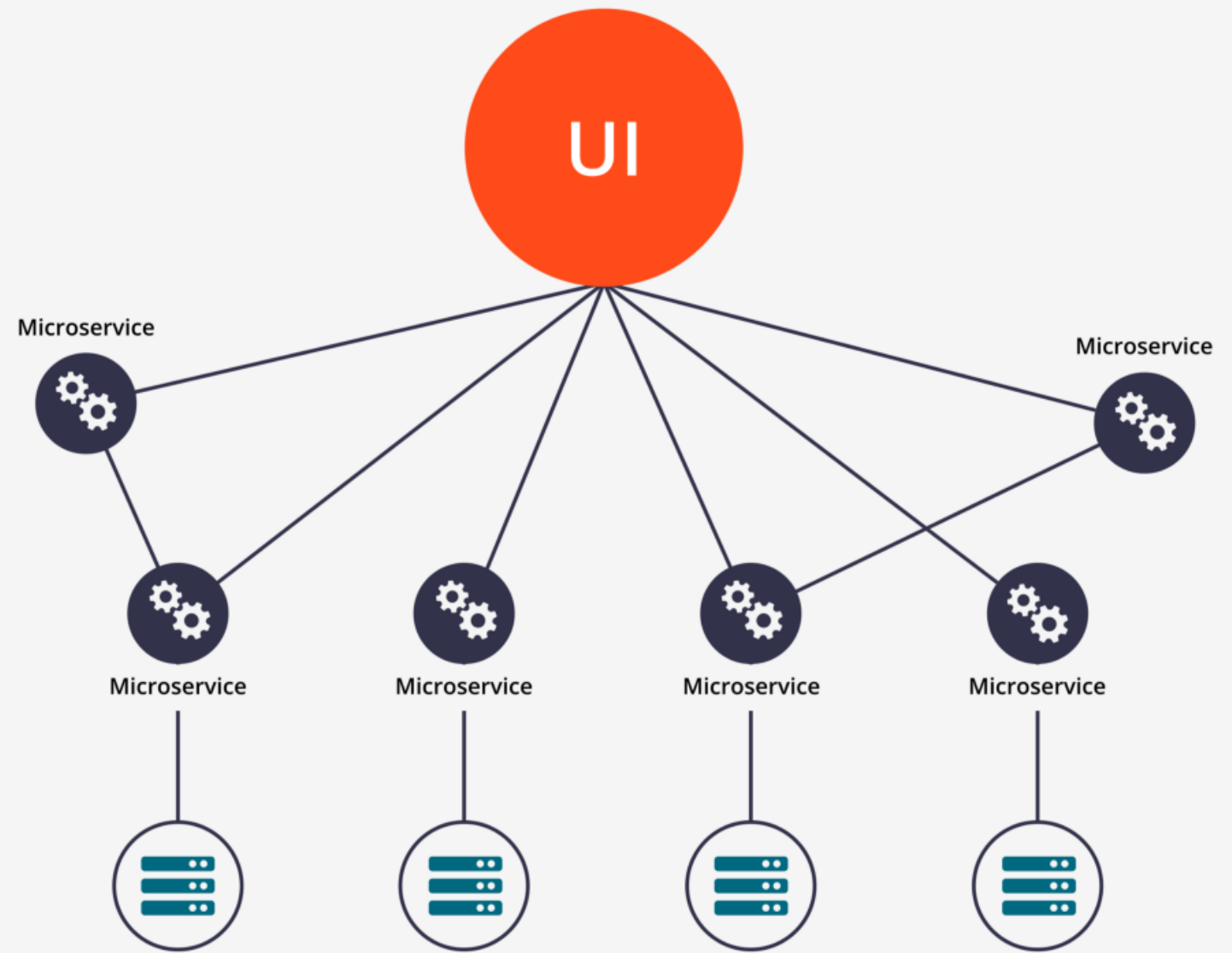
MICROSERVICES

- ▶ Decomposing an application into single function modules which are independently deployed and operated
- ▶ Accelerate delivery by minimizing communication and coordination between people

ARCHITECTURE



Monolithic Architecture



Microservice Architecture

Improved delivery
velocity in exchange for
increased operational
complexity



MICROSERVICES ARE HARD

- ▶ Applications aren't running in green-field environments
- ▶ Network layer is hard to manage
- ▶ Tooling is nascent

THINGS TO CONSIDER

- Security

THINGS TO CONSIDER

- Security
- Canary deployments

THINGS TO CONSIDER

- Security
- Canary deployments
- A/B testing

THINGS TO CONSIDER

- Security
- Canary deployments
- A/B testing
- Circuit breaking

THINGS TO CONSIDER

- Security
- Canary deployments
- A/B testing
- Circuit breaking
- Rate limiting

THINGS TO CONSIDER

- Security
- Canary deployments
- A/B testing
- Circuit breaking
- Rate limiting
- Fault injection

THINGS TO CONSIDER

- Security
- Canary deployments
- A/B testing
- Circuit breaking
- Rate limiting
- Fault injection
- Policy management

THINGS TO CONSIDER

- Security
- Canary deployments
- A/B testing
- Circuit breaking
- Rate limiting
- Fault injection
- Policy management
- Many more....

It's doable, but...

It's doable, but...

Requires a lot of coding

Service Mesh

A dedicated infrastructure layer to make service-to-service communication fast, safe and reliable

ISTIO

A service mesh designed to connect, manage and secure
micro services

ISTIO

A service mesh designed to connect, manage and secure
micro services

Open Source

ISTIO

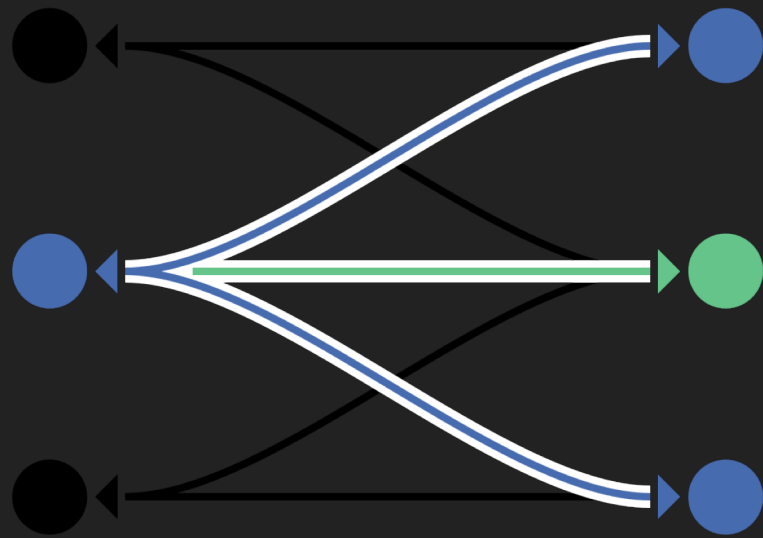
A service mesh designed to connect, manage and secure
micro services

Open Source

Zero Code Changes

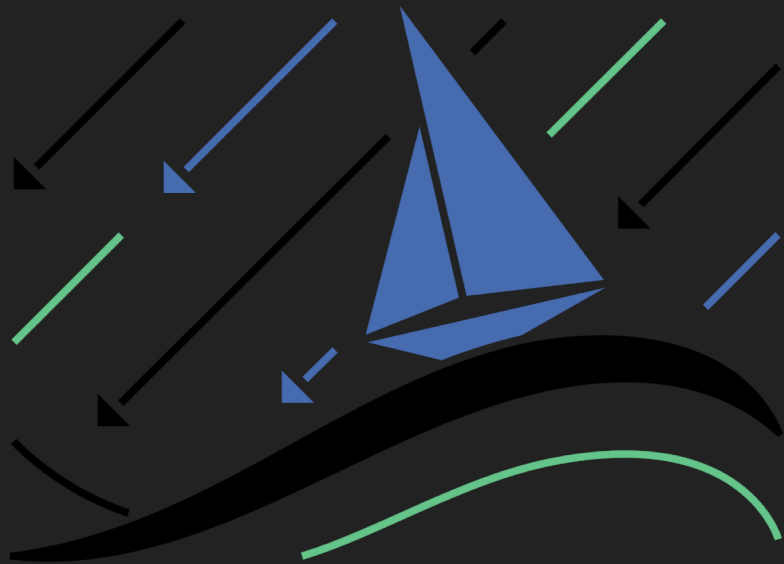
FEATURES

INTELLIGENT ROUTING AND LOAD BALANCING



- ▶ Conduct traffic between services with dynamic route configuration
- ▶ A/B tests
- ▶ Canary releases
- ▶ Red/Black deployments

RESILIENCE ACROSS LANGUAGES AND PLATFORMS



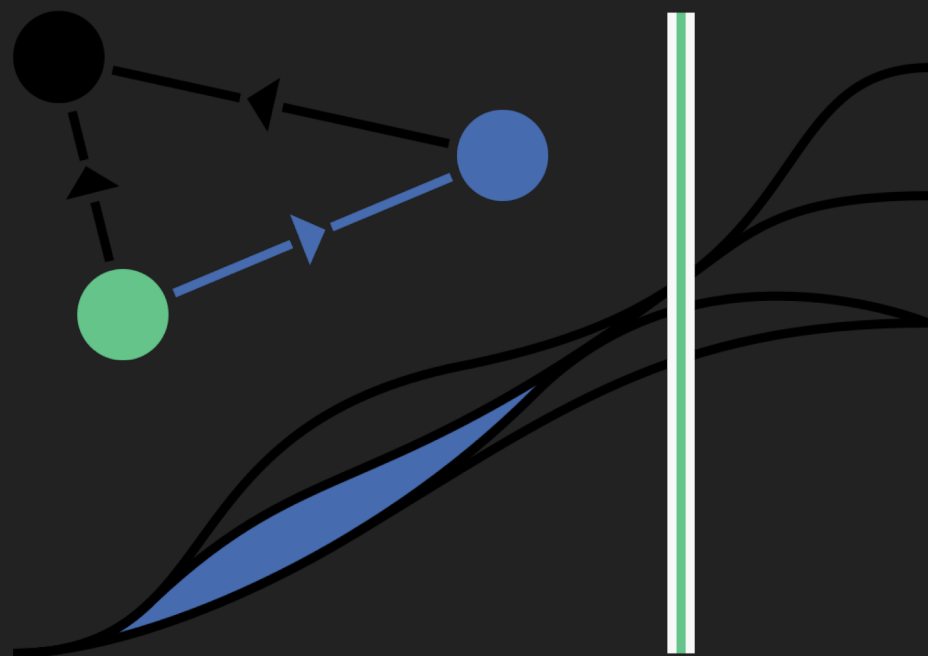
- ▶ Increase reliability by shielding applications from flaky networks and cascading failures in adverse conditions

FLEET-WIDE POLICY ENFORCEMENT



- ▶ Apply organizational policy to the interaction between services
- ▶ Ensure access policies are enforced
- ▶ Make sure resources are fairly distributed among consumers.

IN-DEPTH TELEMETRY AND REPORTING



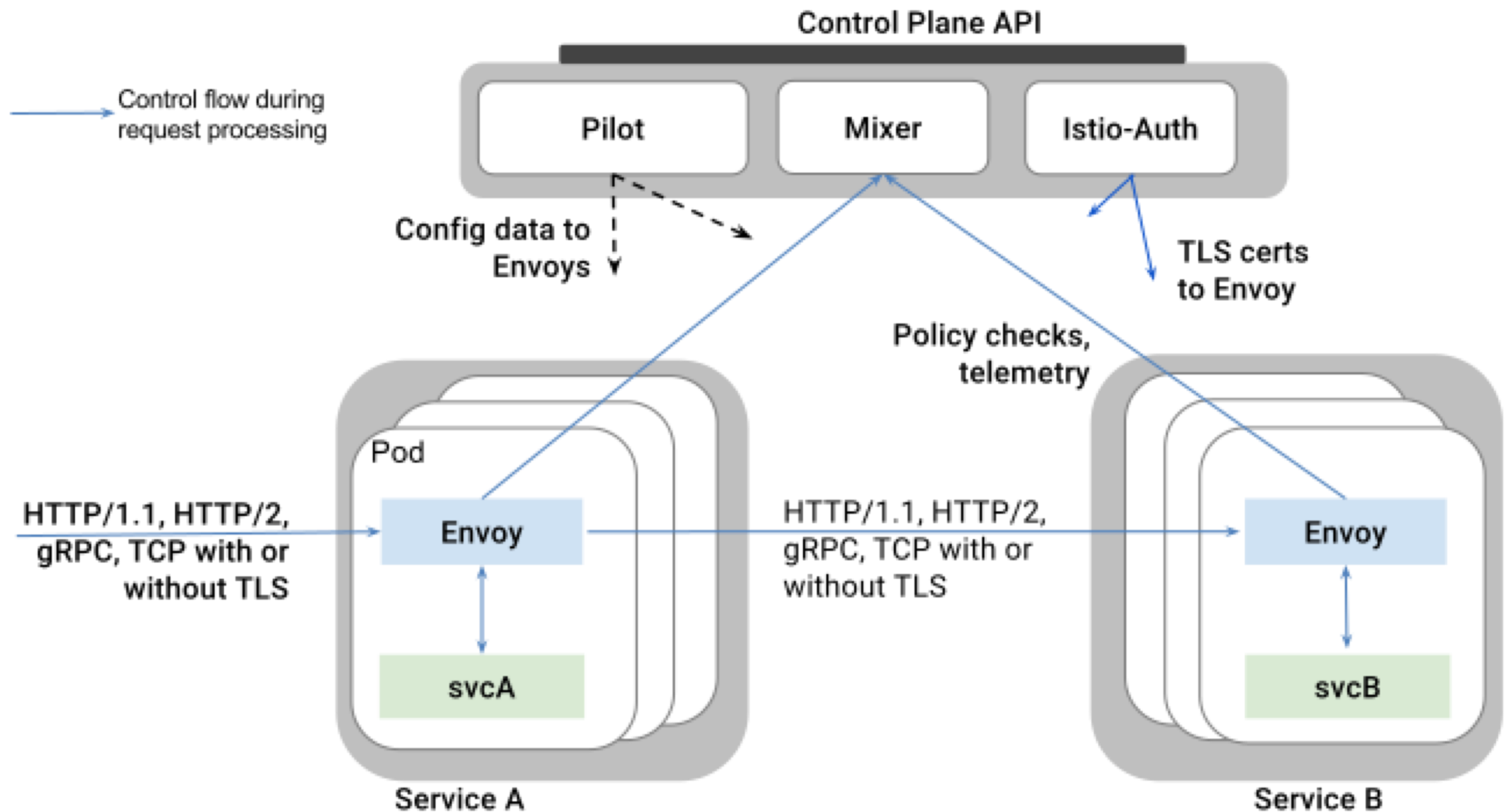
- ▶ Understand the dependencies between services, the nature and flow of traffic between them, and quickly identify issues with distributed tracing.

ENVOY



- ▶ C++ based L4/L7 proxy
- ▶ Low memory footprint
- ▶ Battle tested at Lyft
 - ▶ Runs with 100+ services
 - ▶ 10K VMs
 - ▶ 2M requests/sec

ARCHITECTURE



COMMUNITY PARTNERS

- ▶ Tigera
- ▶ RedHat
- ▶ Pivotal
- ▶ Cisco
- ▶ Weave works
- ▶ Datawire
- ▶ Scytale (SPIFEE)
- ▶ Microsoft
- ▶ And more...

CONTACT ME

CONTACT ME

Nilesh Patel: pateln@us.ibm.com

USEFUL LINKS

- ▶ Web istio.io
- ▶ Twitter: [@Istiomeash](https://twitter.com/Istiomeash)
- ▶ Traffic management using Istio: <https://ibm.co/2F7xSnf>
- ▶ Resiliency and fault-tolerance using Istio: <https://bit.ly/2qStF2B>
- ▶ Reliable application roll out and operations using Istio: <https://bit.ly/2K9IRQX>

THANK YOU!

BACK UP

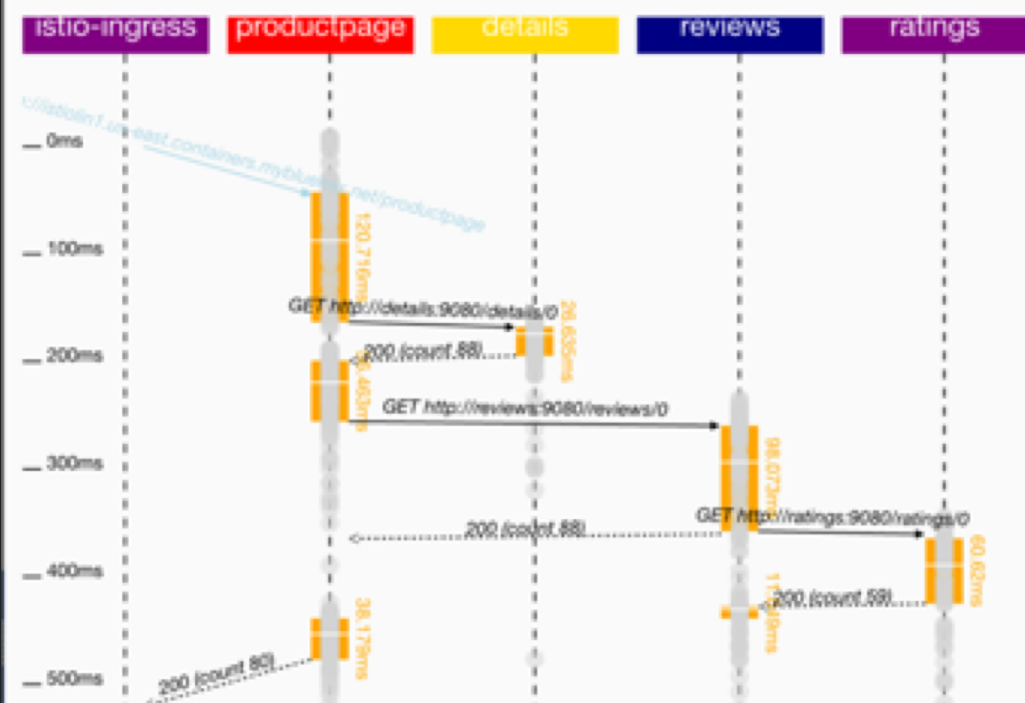
ISTIO ANALYTICS

Trace Analytics for Istio

Baseline Start time	Baseline End time	Max	
2017-12-04T14:52:25.76	2017-12-04T15:52:25.76	500	<input type="button" value="QUERY"/>
			<input type="button" value="ADV 30S"/>
			<input type="button" value="NOW"/>

Request took 3570ms Reporting Zipkin: <http://zipkin.istioln1.us-east.containers.mybluemix.net>
[Types](#) | [Sequence](#) | [Time](#)

▲ ▼ + - Zoom: 1 < > Flow: 0 of 2 GET istio-ingresshttp://istioln1.us-e



Canary Analytics for Istio

Baseline Start time	Baseline End time	Max	
2017-09-19T19:27:00.0Z	2017-09-19T19:30:00.0Z	50	<input type="button" value="QUERY"/>
			<input type="button" value="ADV 30S"/>
			<input type="button" value="NOW"/>

Canary Start time	Canary End time	Max	
2017-09-19T19:34:00.0Z	2017-09-19T19:36:00.0Z	500	<input type="button" value="QUERY"/>
			<input type="button" value="ADV 30S"/>
			<input type="button" value="NOW"/>

Request took 25809ms Reporting Zipkin: <http://zipkin.istioln1.us-east.containers.mybluemix.net>
[Types](#) | [Sequence](#) | [Time](#)

▲ ▼ + - Zoom: 1 < > Flow: 0 of GET ingress/productpage Baseline Traces: 50 Can

