



---

## Highlights

- Preconfigured, standard reports give you out-of-the-box functionality throughout the close cycle.
  - Detailed reports provide the information you need in the format you need it.
  - Reports are available on-demand in virtually any finance environment.
- 

# IBM Cognos Controller— Standard Reports

IBM Cognos Controller offers your Finance department unique advantages in delivering the wide range of reports required by management and regulators. Cognos Controller saves you time and money by providing more than 200 pre-configured, standard reports to give you out-of-the-box functionality throughout the close cycle.

With Cognos Controller:

- All reports required at key stages of the close process are available automatically—no custom report creation is needed.
- Fast, instant analysis is possible at any time during the close.
- Speed and quality of the close are greatly improved.
- Time and costs of initial deployment are low, creating a cost-effective environment to facilitate rapid change.

Cognos Controller extends your consolidation capabilities and supports in-depth analysis of compliance and audit information. The diverse, detailed reports available in Cognos Controller help you deliver precisely the information you need in the format you need it.



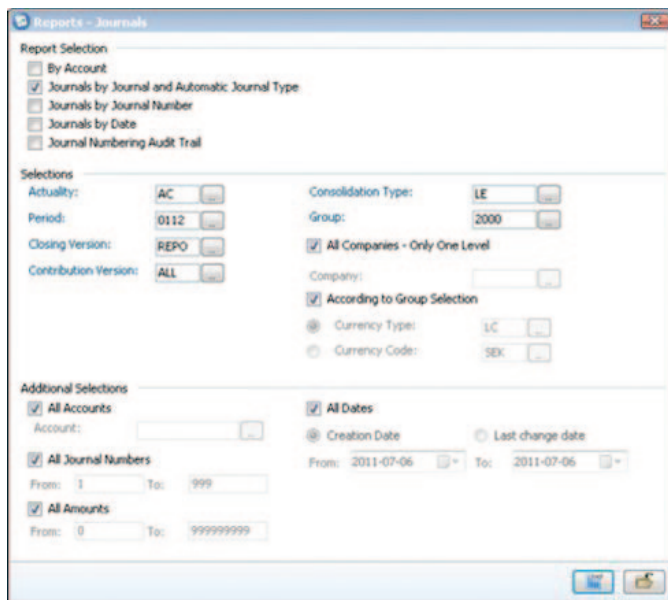


Figure 1: This report allows you to see manual and automatic journals on a “debit-credit” configuration. Several selections are possible, e.g., by journal, account, or date.

## Features and benefits

The pre-configured reports available in Cognos Controller cover more than forty categories, with many runtime report options available. The resulting 200-plus standard reports allow you to examine or present financial information at whatever level of detail the situation demands.

For example, within the navigation menu *Group\Reports\Journals*, five report options are available. You can select your report by:

- Account
- Journals by Journal and Automatic Journal Type
- Journals by Journal Number
- Journals by Date
- Journals Numbering Audit Trail

Cognos Controller is the only solution that delivers pre-built close reporting. It provides the finance organization with unmatched visibility and control throughout the data collection, reconciliation and consolidation process. And all of these reports will work on-demand in virtually any finance environment.

Cognos Controller includes the following pre-configured, standard reports with multiple options available for each, for reporting on the close process:

**Company Reconciliation**

- Reconcile Opening Balances Between Accounts by Company
- Reconcile Intercompany Balances

**Company Reports**

- Intercompany Report
- Company Status
- Number of Entered Values
- Company Journals
- Company Journals Across
- Company journals copied between periods

**Group Reconciliation**

- Reconcile Opening Balances Between Accounts by Group
- Reconcile Opening Balances Between Accounts by Automatic Journal
- Reconcile Intercompany Balances
- Reconcile Intercompany Profit
- Reconcile Investments
- Reconcile Investments Eliminations
- Reconcile Shareholdings and Equity

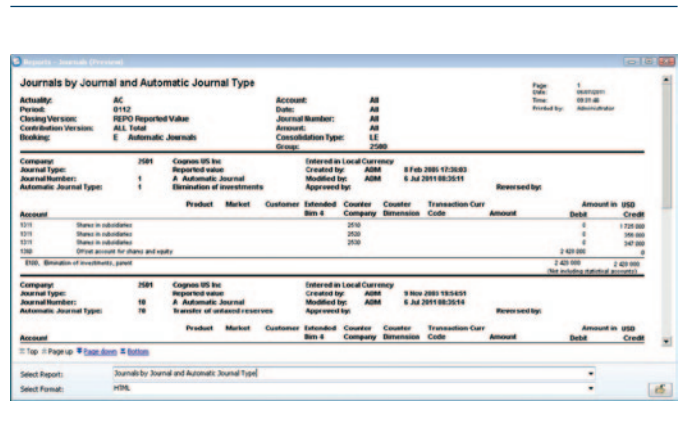


Figure 2: An example of an automatic journal.

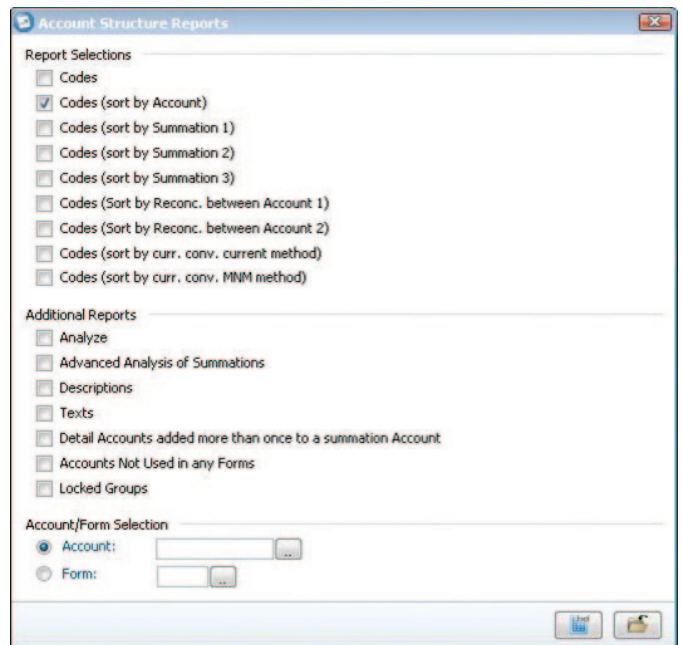


Figure 3: This report allows you to see the configuration of accounts through different views.

### Group Reports

- Group status
- Currency and Historical Rates
- Currency Conversion
- Currency Conversion on Journals
- Group Journals
- Group Journals Across
- Acquisition Calculations
- Trial balance w/drill down
- Ledger Mapping Report
- Commentary
- Shareholdings and Investments
- Intercompany Report

### Report and Data Maintenance

- Ad Hoc Reports
- Intercompany Accounts
- Summation Accounts
- Report Definitions
- External Data Transfers
- External Structure Transfers
- Other Log Reports

The screenshot displays a report titled "Account Structure - Codes (sort by Account)(First Part)". The table lists various account codes and their descriptions, organized into several columns. The columns include Account, Name, Sign, Acct, Subst 1, Subst 2, Subst 3, Natural, Reference, Reference, Reference, Commission, Commission, and Generated. The data is sorted by account number, with entries ranging from 1070 to 1080. The report also shows a page number of 1 and a date of 03/20/10.

Account	Name	Sign	Acct	Subst 1	Subst 2	Subst 3	Natural	Reference	Reference	Reference	Commission	Commission	Generated
1070	Unsettled Investments	+	30	1070									
1075	Unsettled Acc. Expenses	-	30	1075									
1110	Building Leaseholdings	+	30	1110									
1115	Building Leaseholdings	-	30	1115									
1120	Buildings & Equipment Investments	+	30	1120									
1200	Inventory of Equipment Acc. Depreciation	-	30	1200									
1210	Inventory of Equipment	+	30	1210									
1300	Debtors in Equity and Loan Accounts	+	30	1300									
1400	Major Cash Transfer and Cash Receipts	+	30	1400									
1500	Divid. Account for Divid. and Equity	-	30	1500									
1600	Equity	+	30	1600									
1700	Accounts Receivable	+	30	1700									
1800	Accounts Payable	+	30	1800									
1900	Divid. Account - Short-Term Receivable Group	+	30	1900									
2000	Long-Term Debt	+	30	2000									
2100	Equity	+	30	2100									
2200	Accounts Receivable	+	30	2200									
2300	Accounts Payable	+	30	2300									
2400	Accounts Payable	+	30	2400									
2500	Accounts Payable	+	30	2500									
2600	Accounts Payable	+	30	2600									
2700	Accounts Payable	+	30	2700									
2800	Accounts Payable	+	30	2800									
2900	Accounts Payable	+	30	2900									
3000	Accounts Payable	+	30	3000									
3100	Accounts Payable	+	30	3100									
3200	Accounts Payable	+	30	3200									
3300	Accounts Payable	+	30	3300									
3400	Accounts Payable	+	30	3400									
3500	Accounts Payable	+	30	3500									
3600	Accounts Payable	+	30	3600									
3700	Accounts Payable	+	30	3700									
3800	Accounts Payable	+	30	3800									
3900	Accounts Payable	+	30	3900									
4000	Accounts Payable	+	30	4000									

Figure 4: An example sorted by account

Cognos Controller includes the following pre-configured, standard reports with multiple options, for configuration and maintenance purposes:

### Configuration

- Automatic Journals
- Global Settings

### Structures

- Verify Account Structure
- Display Account Structure
- Display Company Structure
- Display Extended Dimension Structures

### System Maintenance

- Linked Structures
- Submissions
- Period Locking
- System Audit Log
- User Rights

### Special Utilities

- Verify Structures
- Validate Data

In addition to the reports in figures 3-5, Cognos Controller enables administrators to audit and report on data flow during the consolidation process. Cognos Controller allows users to track data changes by individual user and by date and time, while monitoring approvals and maintaining an unchanged version of original source data.

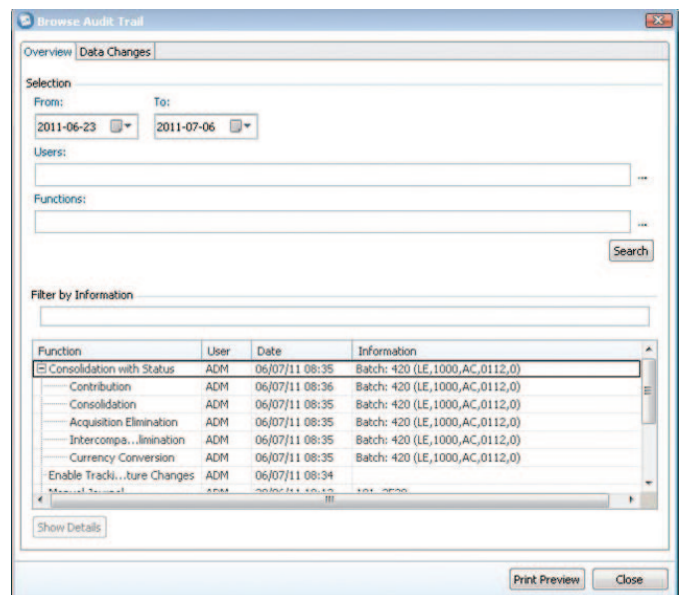


Figure 5: Audit data flow in the consolidation process.

From the Company Command Center, reporting users who are submitting data can easily access different functions that are used during the closing process and get a better overview of both the reporting process and the included tasks (forms). It is also possible to update the status for multiple forms and companies, enter data and reconcile companies or groups.

From the Group Command Center, group users who need to monitor and manage progress for a group of companies can update status, enter data and reconcile companies and groups. They can also assign tasks (forms) to specific users. This is done from the Tasks-Define window. Users can also send email notifications from the Group Command Center.

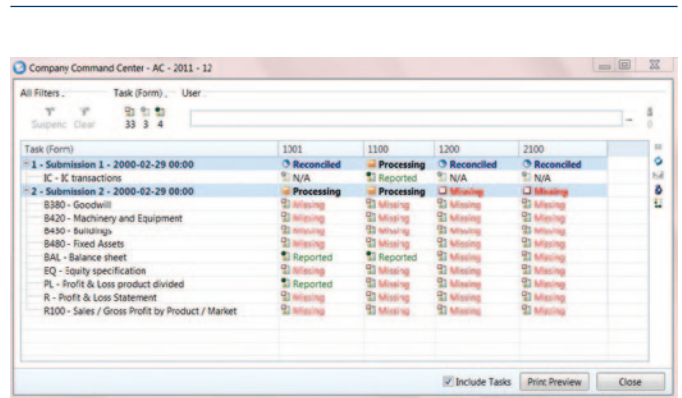


Figure 6: Company Command Center.

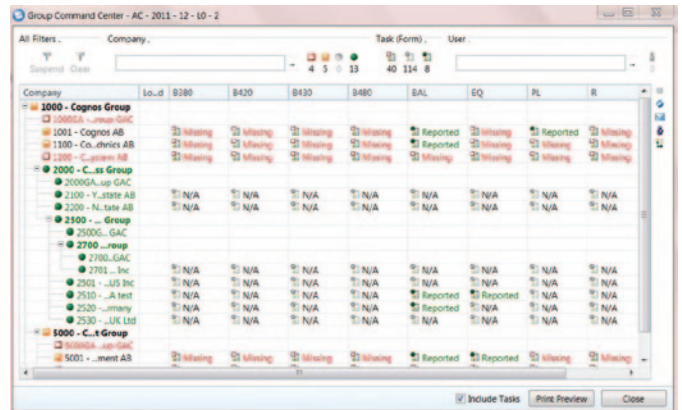


Figure 7: Group Command Center.

## **About IBM Business Analytics**

IBM Business Analytics software delivers actionable insights decision-makers need to achieve better business performance. IBM offers a comprehensive, unified portfolio of business intelligence, predictive and advanced analytics, financial performance and strategy management, governance, risk and compliance and analytic applications.

With IBM software, companies can spot trends, patterns and anomalies, compare “what if” scenarios, predict potential threats and opportunities, identify and manage key business risks and plan, budget and forecast resources. With these deep analytic capabilities our customers around the world can better understand, anticipate and shape business outcomes.

### **For more information**

For further information, please visit  
[ibm.com/business-analytics](http://ibm.com/business-analytics)

### **Request a call**

To request a call or to ask a question, go to  
[ibm.com/business-analytics/contactus](http://ibm.com/business-analytics/contactus). An IBM representative will respond to your enquiry within two business days.



---

© Copyright IBM Corporation 2012

IBM Corporation  
Software Group  
Route 100  
Somers, NY 10589

Produced in the United States of America  
May 2012

IBM, the IBM logo, [ibm.com](http://ibm.com) and Cognos are trademarks of International Business Machines Corp., registered in many jurisdictions worldwide. Other product and service names might be trademarks of IBM or other companies. A current list of IBM trademarks is available on the Web at "Copyright and trademark information" at [www.ibm.com/legal/copytrade.shtml](http://www.ibm.com/legal/copytrade.shtml)

Microsoft and Microsoft Excel are trademarks of Microsoft Corporation in the United States, other countries, or both.

This document is current as of the initial date of publication and may be changed by IBM at any time.

Not all offerings are available in every country in which IBM operates.

It is the user's responsibility to evaluate and verify the operation of any other products or programs with IBM products and programs.

THE INFORMATION IN THIS DOCUMENT IS PROVIDED "AS IS" WITHOUT ANY WARRANTY, EXPRESS OR IMPLIED, INCLUDING WITHOUT ANY WARRANTIES OF MERCHANTABILITY, FITNESS FOR A PARTICULAR PURPOSE AND ANY WARRANTY OR CONDITION OF NON-INFRINGEMENT. IBM products are warranted according to the terms and conditions of the agreements under which they are provided.

The client is responsible for ensuring compliance with laws and regulations applicable to it. IBM does not provide legal advice or represent or warrant that its services or products will ensure that the client is in compliance with any law or regulation.



Please Recycle