



Highlights

- Provides a Single Point of Control for IMS System Management
 - Dynamically controls IMS resources and simplifies IMS configuration administration
 - Ensures IMS message integrity for the complete life of an IMS transaction
 - Improves IMS database availability to meet Service Level Agreements (SLAs)
 - Program Number: 5655-SYM
-

IMS System Management Solution

Control your IMS Systems and Configuration

As system operations become more complex, IT Directors are looking to IBM to provide tooling to manage their system environments effectively. IBM system management solutions simplify data center operations by allowing system programmers the ability to manage and update their IMS configuration dynamically. It is critical for IMS system programmers to have real-time knowledge of the IMS environment with the ability to correct problems before they are realized. A complete and total IBM system management solution allows IT Directors to meet their Service Level Agreements (SLAs) while allowing change to occur in the system environment.

The IMS System Management Solution provides all of the tooling required to manage the IMS system environment. It provides a single point of control for IMS Configuration Management, IMS Resource Management, IMS Transaction Management, IMS Batch Application Lock Management.



IMS System Management Solution

The *IMS System Management Solution* is the single point of control that is needed by IMS system programmers to control their IMS environment. The *IMS System Management Solution* includes several important components as shown in Figure 1.

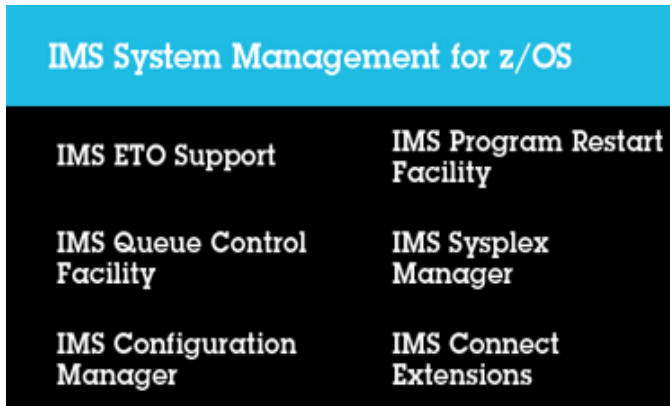


Figure 1: *IMS System Management Solution Components*

IMS Configuration Management

The *IMS System Management Solution* allows users to manage their IMS system components, IMS parameters, control IMS message region status, and issue both IMS Type 1 and Type 2 commands. In fact, the IMS system programmer can dynamically monitor the overall health of the IMS system environment including transactions, programs, databases, users and terminals as shown in Figure 2. Critical to proactive IMS system management, the *IMS System Management Solution* allows resource thresholds to be established which trigger “alerts” which can be sent directly to the IMS system programmer advising of them of pending error situations. In an IMS Sysplex environment, the IMS system programmer can monitor and alter the datasharing and shared message queues structures in the Coupling Facility, too.

IMS Resource Management

The *IMS System Management Solution* is the single point of control for IMS resource management. IMS system programmers can monitor, alter, and deploy IMS resources dynamically within a single IMS system or throughout the IMS sysplex environment.



Figure 2: *IMS System Management Solution Analytics User Interface*

This solution simplifies and standardizes IMS system configuration changes allowing the IMS system programmer to rapidly deploy changes to other IMS systems consistently. The *IMS System Management Solution* fully understands all of the components in the IMS environment as shown in Figure 3.

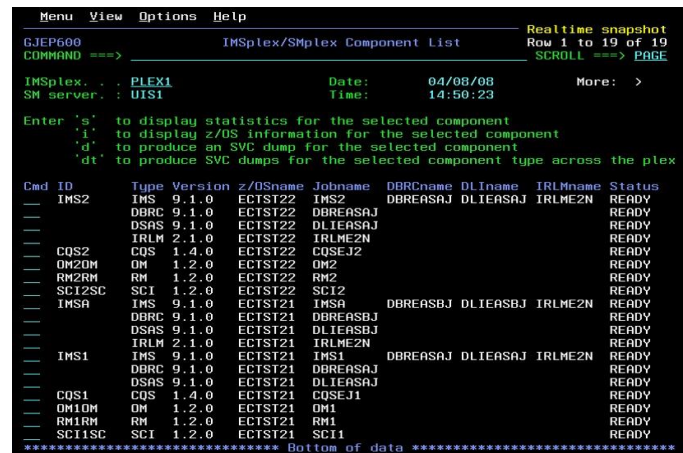


Figure 3: *IMS System Management Solution Component List*

The *IMS System Management Solution* allows IMS Extended Terminal Option (ETO) IMS system programmers to create Users and Terminals dynamically without writing complicated user exits. The solution also provides IMS system programmers with the ability to release failed terminals and their IMS conversational transactions avoiding the need for a restart of the IMS system.

IMS Transaction Management

The *IMS System Management Solution* is the single point of control for the messaging and queuing paradigm employed by IMS. A user submits a transaction in the form of an input message and receives the response in an output message. Message integrity is of paramount importance in IMS and the *IMS System Management Solution* goes to great lengths to ensure no messages are ever lost once they are created. This solution can recover IMS messages after system outages or during planned maintenance cycles. The *IMS System Management Solution* also allows IMS system programmers to manage IMS messages coming through TCP/IP using IMS Connect. With this solution, transaction workloads can be dynamically altered for peak and non-peak periods and IMS system programmers can affect the reliability and performance of IMS Connect itself.

IMS Batch Application and Lock Management

The *IMS System Management Solution* is the single point of control for managing the IMS batch applications and database locking issues. IMS uses locking to protect shared database resources. When large numbers of transactions are running in parallel and sharing the same database segments, it is inevitable that there will be contention for the same resources and deadlocks can occur causing poor application performance. The *IMS System Management Solution* can detect and correct deadlock situations automatically.

The *IMS System Management Solution* has the same level of control over IMS batch programs. It automates the error-prone manual process of backing out a failed batch program, releasing shared database locks, and restarting the batch program. This gives the IMS system programmer total control over their batch application programs. The *IMS System Management Solution* has many options for managing IMS batch programs as shown in Figure 4.

For more information

To learn more about the IBM IMS Tools product line, please contact your IBM representative or IBM Business Partner, or visit: ibm.com/software/data/db2imstools/products/ims-tools.html

© Copyright IBM Corporation 2016

IBM Corporation
Route 100
Somers, NY 10589

Produced in the United States of America
June 2016

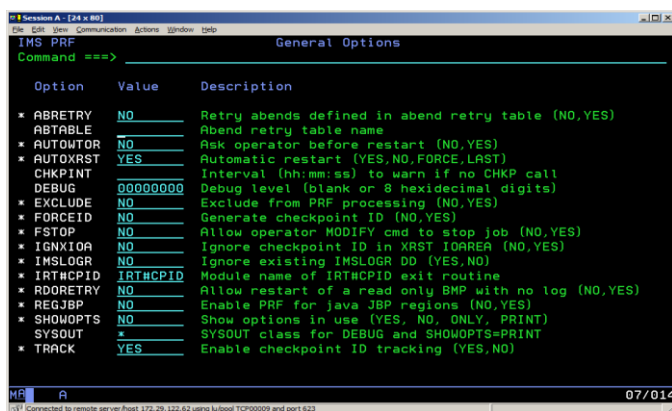
IBM, the IBM logo, ibm.com, and IMS are trademarks of International Business Machines Corp., registered in many jurisdictions worldwide. Other product and service names might be trademarks of IBM or other companies. A current list of IBM trademarks is available on the web at "Copyright and trademark information" at: ibm.com/legal/copytrade.shtml

This document is current as of the initial date of publication and may be changed by IBM at any time. Not all offerings are available in every country in which IBM operates.

THE INFORMATION IN THIS DOCUMENT IS PROVIDED "AS IS" WITHOUT ANY WARRANTY, EXPRESS OR IMPLIED, INCLUDING WITHOUT ANY WARRANTIES OF MERCHANTABILITY, FITNESS FOR A PARTICULAR PURPOSE AND ANY WARRANTY OR CONDITION OF NON-INFRINGEMENT. IBM products are warranted according to the terms and conditions of the agreements under which they are provided.



Please Recycle



The screenshot shows a terminal window titled "Session A: [24 x 80]" with a sub-window titled "General Options" for the "IMS PRF" command. The window displays a list of options with their current values and descriptions. The options are as follows:

Option	Value	Description
* ABRETRY	NO	Retry abends defined in abend retry table (NO,YES)
ABTABLE		Abend retry table name
* AUTOWTOR	NO	Ask operator before restart (NO,YES)
* AUTOXRST	YES	Automatic restart (YES,NO,FORCE,LAST)
CHKPINT		Interval (hh:mm:ss) to warn if no CHKP call
DEBUG	00000000	Debug level (blank or 8 hexadecimal digits)
* EXCLUDE	NO	Exclude from PRF processing (NO,YES)
* FORCEID	NO	Generate checkpoint ID (NO,YES)
* FSTOP	NO	Allow operator MODIFY cmd to stop job (NO,YES)
* IGNXIOA	NO	Ignore checkpoint ID in XRST IOAREA (NO,YES)
* IMSLOGR	NO	Ignore existing IMSLOGR DD (YES,NO)
* IRT#CPID	IRT#CPID	Module name of IRT#CPID exit routine
* RDORETRY	NO	Allow restart of a read only BMP with no log (NO,YES)
* REGJBP	NO	Enable PRF for java JBP regions (NO,YES)
* SHOWOPTS	NO	Show options in use (YES, NO, ONLY, PRINT)
SYSOUT	*	SYSOUT class for DEBUG and SHOWOPTS=PRINT
* TRACK	YES	Enable checkpoint ID tracking (YES,NO)

At the bottom of the window, it shows "MR A" and "07/014". A status bar at the very bottom indicates "Connected to remote server host: 172.29.122.62 using libtelnet TCP00009 and port 623".

Figure 4: *IMS System Management Solution Batch Program Options*