

WSI Pilotbrief Optima for FBOs

Anticipate, visualize and avoid
hazardous weather in a whole
new way



Highlights

- High definition convective weather layers
- The Weather Company Rapid Precision Model forecast
- Global forecast content

The Weather Company, an IBM Business, delivers a web-based version of WSI Pilotbrief Optima for Fixed Based Operators (FBOs) to offer on their own PCs. This web-based product offers an easy to download and install license for running Pilotbrief Optima within your existing web-browser. Placing an icon on your desktop, pilots can easily view their weather without the need to enter any credentials!

Pilots and aviation personnel around the world utilize Pilotbrief Optima to plan and optimize global flight operations based on its high quality, actionable and industry-standard weather graphics and briefings. Pilotbrief Optima combines a high performance map, high definition weather information, enhanced global overlays and can be customized for your FBO.

FBO branding

FBOs can incorporate their logos and branding into the attractive screen saver loop of real time weather content. Featured alongside The Weather Company proprietary weather content, FBOs can build a strong relationship with pilots by offering the superior weather forecasting they expect.



**Anticipate, visualize
and avoid hazardous
weather in a whole
new way**



**Give the pilots the weather-related
information they need!**

High definition convective weather layers

Includes enhanced radar, Vertically Integrated Liquid (VIL), Echo Top mosaics and features a four-fold improvement in spatial resolution showing the highest tops of greatest concern for improved confidence in route planning and decision-making.

WSI rapid precision model (RPM) forecast

The Weather Company's proprietary RPM weather model puts out hourly forecasts of visibility, ceiling, temperature, winds and precipitation. View these forecasts in the forecast monitor or on the interactive map.

WSI global weather content

Pilotbrief Optima features global weather content including SATrad, a depiction of convection through the tropics derived from high resolution model data, global SIGMET data, International NOTAMs, Nat-Tracks and Hi Level Significant Weather.

WSI forecast enroute hazards

The Weather Company forecasters issue a real time SIGMET and a forecast for convection, turbulence, icing, volcanic ash clouds and blowing dust around the world. Covering flight levels over the CONUS and FL 180 and above globally, pilots can overlay their route with the valid forecast period and assess what disturbances they may encounter. Edit your route to avoid severe icing, turbulence, volcanic ash, or other phenomena.

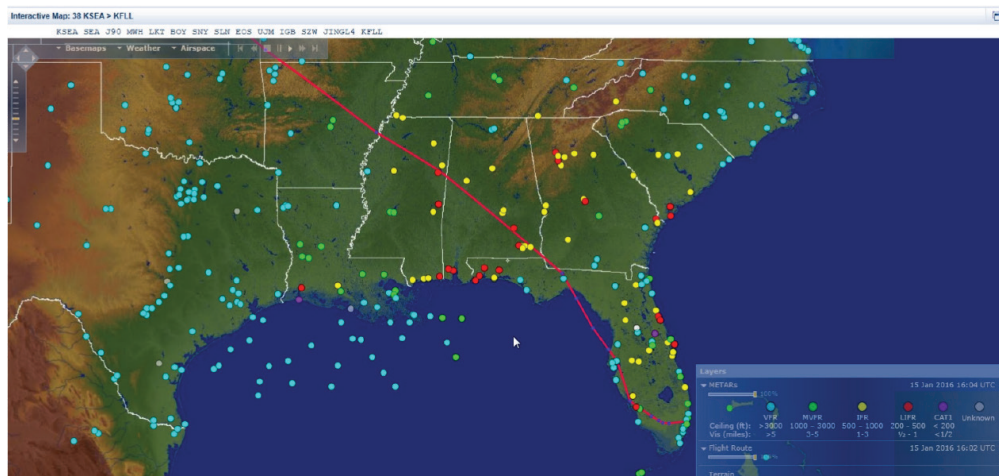
WSI global lightning network

With an optional overlay of The Weather Company's proprietary Global Lightning Network (GLN), pilots can quickly identify areas of strongest convective activity outside ground-based weather radar range.

ASD flight tracking

View incoming flights to your airfield, equipment type and time of arrival view with FM ASD flight data available as an interactive map overlay. Highlight your highest value customers in bold to ensure you are ready when they arrive!

WSI Pilotbrief Optima for FBOs featuring robust global weather content, an intuitive user interface and a powerful interactive map, Pilotbrief Optima offers graphical weather, NOTAMs, TFRs, route selection including saved and recently cleared routes, as well as a quality-controlled radar imagery.



Minimum system requirements

WSI Pilotbrief Optima is tested on Windows XP SP3 and Windows 7 using a standard web browser such as IE7 or greater, Firefox 4 or higher or Chrome. Microsoft Silverlight 4 (a free download) is required to run the interactive map. For best performance, 2GB of RAM is recommended.

About The Weather Company, an IBM Business

The Weather Company, an IBM Business, helps people make informed decisions and take action in the face of weather. The company offers the most accurate forecasts globally with personalized and actionable weather data and insights to millions of consumers, as well as thousands of marketers and businesses via Weather's API, its business solutions division, and its own digital products from The Weather Channel (weather.com) and Weather Underground (wunderground.com).

The company delivers around 25 billion forecasts daily. Its products include the world's most downloaded weather app, a network of 250,000 personal weather stations, a top-20 U.S. website, one of the world's largest IoT data platforms, and industry-leading business solutions.

Weather Means Business™. The world's biggest brands in aviation, energy, insurance, media, and government rely on The Weather Company for data, technology platforms and services to help improve decision-making and respond to weather's impact on business.

For more, visit theweathercompany.com



© 2017 Copyright The Weather Company,
an IBM Business

The Weather Company, an IBM Business
400 Minuteman Rd
Andover, MA 01810

Produced in the United States of America
August 2017

IBM, the IBM logo and ibm.com are trademarks of International Business Machines Corp., registered in many jurisdictions worldwide. The Weather Company®, The Weather Company® and device, are trademarks or registered trademarks of TWC Product and Technology, LLC, an IBM Company. Other product and service names might be trademarks of IBM or other companies. A current list of IBM trademarks is available on the Web at “Copyright and trademark information” at www.ibm.com/legal/copytrade.shtml.

Microsoft, Windows, Windows NT, and the Windows logo are trademarks of Microsoft Corporation in the United States, other countries, or both.

This document is current as of the initial date of publication and may be changed by IBM at any time. Not all offerings are available in every country in which IBM operates.

The information in this document is provided “as is” without any warranty, express or implied, including without any warranties of merchantability, fitness for a particular purpose and any warranty or condition of non-infringement.

IBM products are warranted according to the terms and conditions of the agreements under which they are provided.

The performance data and client examples cited are presented for illustrative purposes only. Actual performance results may vary depending on the specific configurations and operating conditions. It is the user’s responsibility to evaluate and verify the operation of any other products or programs with IBM product and programs.

Statement of Good Security Practices: IT system security involves protecting systems and information through prevention, detection and response to improper access from within and outside your enterprise. Improper access can result in information being altered, destroyed, misappropriated or misused or can result in damage to or misuse of your systems, including for use in attacks on others. No IT system or product should be considered completely secure and no single product, service or security measure can be completely effective in preventing improper use or access. IBM systems, products and services are designed to be part of a lawful, comprehensive security approach, which will necessarily involve additional operational procedures, and may require other systems, products or services to be most effective. IBM does not warrant that any systems, product or services are immune from, or will make your enterprise immune from, the malicious or illegal conduct of any party.