

## **INTRODUCTION**

The ALCS message trace facility is a problem determination aid which traces input and output messages to a wrap around on-line trace area for selected communication resources. You can run this facility either on your production system or on any test system.

The tracing will take place either before control is passed to an application (or to the ALCS command processor) after installation-wide exit USRCOM2 is (conditionally) called, or at the start of ROUTC or SEND-type monitor-request macro processing after installation-wide exit USRCOM4 is (conditionally) called.

## **GTFCC macro, CALLABLE SERVICES AND INSTALLATION-WIDE EXITS**

IBM provides you with a special flavour of the GTFCC macro and with two callable services UMSGT1 and UMSGT2 in order to perform any additional tracing if such a requirement arises. With the help of two installation-wide ECB controlled exits (AMG1 and AMG2) the on-line trace message display can be customized

## **SCTGEN**

You must specify in the ALCS system configuration table (SCTGEN) the message trace control parameters (see for more details the ALCS Installation and Customization manual).

## **ZTRAC Msg COMMAND**

You can start, stop, or clear tracing of a resource from the Prime CRAS or from any AT1-16 CRAS authorized terminal, whereby the resource can be either generic or specific (see for more details the ALCS Operation and Maintenance manual).

You can display the on-line trace data from any CRAS authorized terminal. You also can display the totals. Note that the totals will include the callable service calls for a message (see for more details the ALCS Operation and Maintenance manual).

## **SCTGEN EXAMPLES**

SCTGEN example # 1: (2MB page-able message trace area above the bar)

```
AMODE64=(VFA,MSGTRACE),  
MSGTRACE=2M,  
PAGE=MSGTRACE,
```

SCTGEN example #2 (70K page-fixed message trace area below the bar)

```
MSGTRACE=70K,  
PAGE=NONE,
```

SCTGEN example #3 (*No message trace*)

```
MSGTRACE=NO,
```

Note that when you use a page-fixed message trace area above the BAR, then you must exclude 20% of your on-line real storage above 2GB as this real storage area needs to be reclaimable for use by z/OS at any time and therefore is not eligible for page-fixed ALCS storage.

FYI when it is not used by z/OS to back DAT structures, this storage is available for application or system use for pageable requests or for pagefix requests of swappable address spaces.

## **INSTALLATION-WIDE EXIT EXAMPLES**

USRTCP2 and USRCOM4 show how the callable services UMSGT1 and UMSGT2 have to be coded. Note that the intention of the USRCOM4 example is to show the format of the traced data. You normally will not code this as we IBM already trace after calling installation-wide exit USRCOM4.

The installation-wide exits AMG1 and AMG2 are modified to show the displays in a slightly different format.

See tags SAMPLE1, SAMPLE2, SAMPLE3, SAMPLE4, SAMPLE5.

SAMPLE1: HOW TO USE UMSGT1 (in USRCOM4)

SAMPLE2: HOW TO USE UMSGT2 (in USTRCP2)

SAMPLE3: HOW TO USE AMG1 (in AMG1S1)

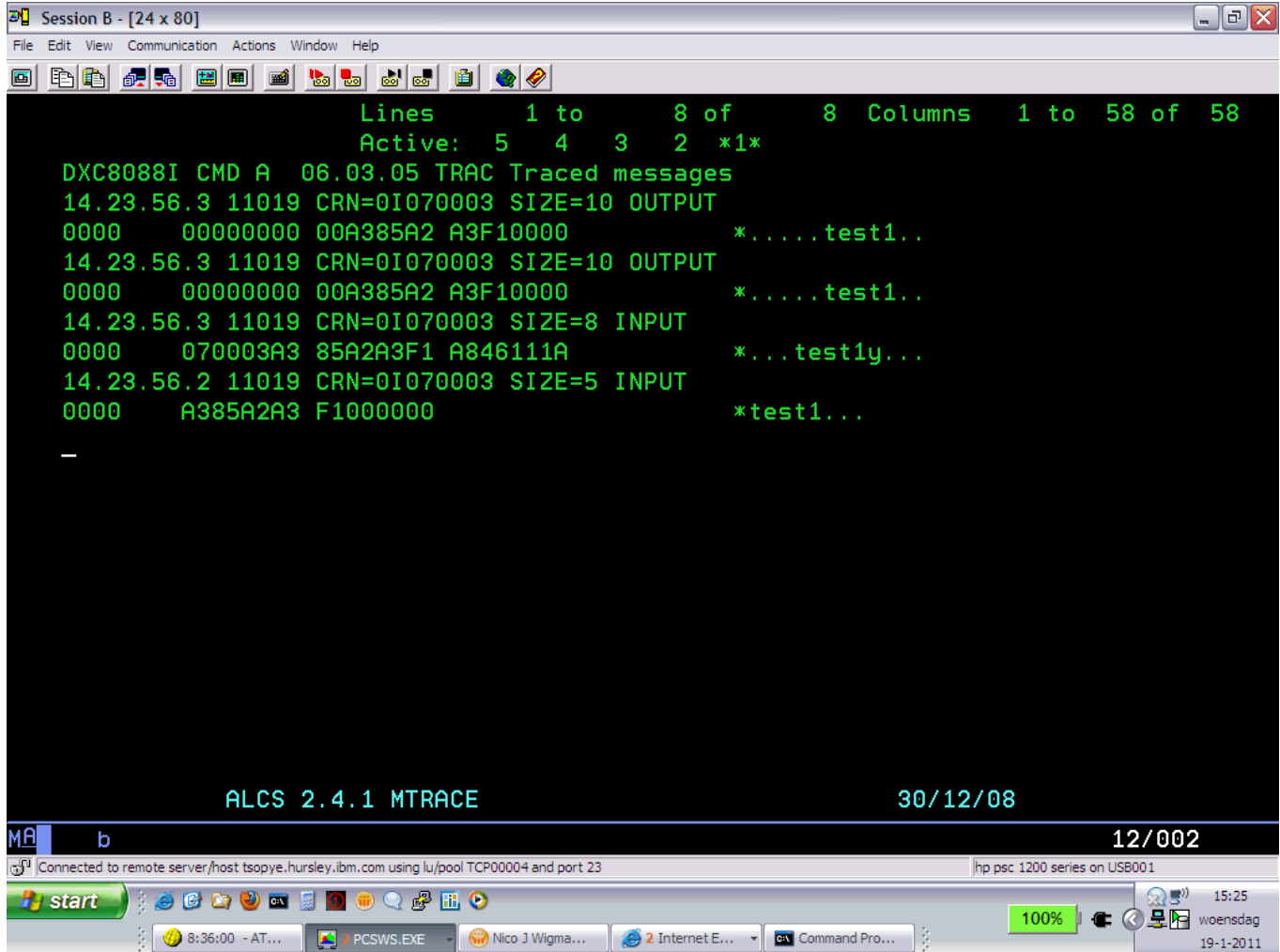
SAMPLE4: HOW TO USE AMG2 (in AMG1S1)

SAMPLE5: HOW TO USE AMG2 (in AMG1S2)

**ZTRAC Msg Display EXAMPLES** with the USRTCP2 and USRCOM4 examples loaded

(I) TCP/IP traffic (The ZTRAC Msg Start command is not typically shown)

1.1 - "ZTRAC Msg Display"



1.2 - "ZTRAC Msg Display" with also **AMG1** and AMG2 LOADED (version AMG1S1)

Session B - [24 x 80]

File Edit View Communication Actions Window Help

Lines 1 to 8 of 8 Columns 1 to 58 of 58  
Active: 5 4 3 2 \*1\*

```
DXC8088I CMD A 06.06.34 TRAC Traced messages
14.23.56.3 11019 CRN=0I070003 SIZE=10 OUTPUT
0000 00000000 00A385A2 A3F10000 *...test1..
14.23.56.3 11019 CRN=0I070003 SIZE=10 OUTPUT UCOM4
0000 00000000 00A385A2 A3F10000 *...test1..
14.23.56.3 11019 CRN=0I070003 SIZE=8 INPUT
0000 070003A3 85A2A3F1 A846111A *...test1y...
14.23.56.2 11019 CRN=0I070003 SIZE=5 INPUT UTCP2
0000 A385A2A3 F1000000 *test1...
```

ALCS 2.4.1 MTRACE 30/12/08

MA b 12/002

Connected to remote server/host tsopye.hursley.ibm.com using lu/pool TCP00004 and port 23 hp psc 1200 series on USB001

start 8:39:58 - AT... PCSWS.EXE ALCS Messag... 2 Internet E... Command Pro... 100% 15:29 woensdag 19-1-2011

1.3 - "ZTRAC Msg Display User=C" with also AMG1 and **AMG2** LOADED (version AMG1S1) Note the user parameter.

The screenshot shows a terminal window titled "Session B - [24 x 80]" with a menu bar (File, Edit, View, Communication, Actions, Window, Help) and a toolbar. The main display area contains the following text:

```
Lines      1 to      9 of      9 Columns  1 to 59 of 59
Active:    5  4  3  2 *1*
DXC8088I CMD A 06.08.55 TRAC Traced messages
14.23.56.3 11019 CRN=0I070003 SIZE=10 OUTPUT
0000 00000000 00A385A2 A3F10000 *.....test1..
#EOM NOT FOUND IN NEXT MESSAGE - COMPLETE MESSAGE DISPLAYED
14.23.56.3 11019 CRN=0I070003 SIZE=10 OUTPUT UCOM4
0000 00000000 00A385A2 A3F10000 *.....test1..
14.23.56.3 11019 CRN=0I070003 SIZE=8 INPUT
0000 070003A3 85A2A3F1 A846111A *...testly...
14.23.56.2 11019 CRN=0I070003 SIZE=5 INPUT UTC2
0000 A385A2A3 F1000000 *test1...
-
```

At the bottom of the terminal window, the text "ALCS 2.4.1 MTRACE" is displayed on the left and "30/12/08" on the right. Below the terminal window is a Windows taskbar with the following elements:

- Start button and taskbar icons (Internet Explorer, Command Prompt, etc.)
- System tray showing the date and time: "15:31 woensdag 19-1-2011"
- Taskbar buttons for "PCSW.S.EYE", "ALCS Messag...", "Internet E...", and "Command Pro..."
- A green progress indicator showing "100%"

The taskbar also shows the user name "b" and the session ID "13/002". The status bar at the bottom indicates the connection: "Connected to remote server/host tsopye.hursley.ibm.com using lu/pool TCP00004 and port 23" and "hp psc 1200 series on USB001".

1.4 - "ZTRAC Msg Display User=1" with also **AMG1** and **AMG2** LOADED (version AMG1S2)

The screenshot shows a terminal window titled "Session B - [24 x 80]" with a menu bar (File, Edit, View, Communication, Actions, Window, Help) and a toolbar. The main display area contains the following text:

```
Lines      1 to      2 of      2 Columns  1 to 58 of 58
Active:    5  4  3  2 *1*
DXC8088I CMD A 06.10.56 TRAC Traced messages
14.23.56.3 11019 CRN=0I070003 SIZE=10 OUTPUT UCOM4
0000      00000000 00A385A2 A3F10000          *.....
```

At the bottom of the terminal window, the text "ALCS 2.4.1 MTRACE" is displayed on the left and "30/12/08" on the right. Below the terminal window is a Windows taskbar with the Start button, a taskbar showing the user "b", and a system tray with the date "06/002", a connection status "Connected to remote server/host tsopye.hursley.ibm.com using lu/pool TCP00004 and port 23", and a hardware status "hp psc 1200 series on USB001". The taskbar includes icons for "start", "8:43:41 - AT...", "PCSWS.EXE", "ALCS Messag...", "2 Internet E...", and "Command Pro...". The system tray shows a "100%" battery indicator, a volume icon, a network icon, and the system clock displaying "15:33 woensdag 19-1-2011".

(II) 3270 traffic

2.1 - "ZTRAC Msg Display" with also **AMG1** and **AMG2** loaded (version AMG1S2)

```
Session B - [24 x 80]
File Edit View Communication Actions Window Help
Lines 1 to 18 of 18 Columns 1 to 63 of 63
Active: 5 4 3 2 *1*
DXC8088I CMD A 06.13.24 TRAC Traced messages
14.34.18.0 11019 CRN=PYEYTC05 SIZE=36 OUTPUT
0000 02026061 80F0F6F1 F340F3F0 C4C5C340 *.....0613 30DEC *
0010 D3D6D515 C7C5D540 D4E2C740 40404040 *LON.GEN MSG *
0020 F0156E4E 00000000 *0.....
14.34.18.0 11019 CRN=PYEYTC05 SIZE=36 OUTPUT UCOM4
0000 02026061 80F0F6F1 F340F3F0 C4C5C340 *.....0613 30DEC *
0010 D3D6D515 C7C5D540 D4E2C740 40404040 *LON.GEN MSG *
0020 F0156E4E 00000000 *0.....
14.34.18.0 11019 CRN=PYEYTC05 SIZE=11 INPUT
0000 020260D8 C3D461D3 D6D54E00 *...QCM.LON..
14.34.13.5 11019 CRN=PYEYTC05 SIZE=27 OUTPUT
0000 02026061 87E3D9C1 D5E2C1C3 E3C9D6D5 *...gTRANSACTION*
0010 40C9C7D5 D6D9C5C4 156E4E00 * IGNORED....
14.34.13.5 11019 CRN=PYEYTC05 SIZE=27 OUTPUT UCOM4
0000 02026061 87E3D9C1 D5E2C1C3 E3C9D6D5 *...gTRANSACTION*
0010 40C9C7D5 D6D9C5C4 156E4E00 * IGNORED....
14.34.13.4 11019 CRN=PYEYTC05 SIZE=5 INPUT
0000 020260C9 4E000000 *...I....

ALCS 2.4.1 MTRACE 30/12/08
MA b 22/002
Connected to remote server/host tsopye.hursley.ibm.com using lu/pool TCP00004 and port 23 hp psc 1200 series on USB001
start 8:46:04 - AT... PCSWS.EXE ALCS Messag... 2 Internet E... Command Pro... 100% 15:35 woensdag 19-1-2011
```

2.2 "ZTRAC Msg Display Top=Old" with also **AMG1** and **AMG2** loaded (version AMG1S2)

```
Session B - [24 x 80]
File Edit View Communication Actions Window Help
Lines 1 to 18 of 18 Columns 1 to 63 of 63
Active: 5 4 3 2 *1*
DXC8088I CMD A 06.15.56 TRAC Traced messages
14.34.13.4 11019 CRN=PYEYTC05 SIZE=5 INPUT
0000 020260C9 4E000000 *...I...
14.34.13.5 11019 CRN=PYEYTC05 SIZE=27 OUTPUT UCOM4
0000 02026061 87E3D9C1 D5E2C1C3 E3C9D6D5 *...gTRANSACTION*
0010 40C9C7D5 D6D9C5C4 156E4E00 * IGNORED...
14.34.13.5 11019 CRN=PYEYTC05 SIZE=27 OUTPUT
0000 02026061 87E3D9C1 D5E2C1C3 E3C9D6D5 *...gTRANSACTION*
0010 40C9C7D5 D6D9C5C4 156E4E00 * IGNORED...
14.34.18.0 11019 CRN=PYEYTC05 SIZE=11 INPUT
0000 020260D8 C3D461D3 D6D54E00 *...QCM.LON..
14.34.18.0 11019 CRN=PYEYTC05 SIZE=36 OUTPUT UCOM4
0000 02026061 80F0F6F1 F340F3F0 C4C5C340 *...0613 30DEC *
0010 D3D6D515 C7C5D540 D4E2C740 40404040 *LON.GEN MSG *
0020 F0156E4E 00000000 *0.....
14.34.18.0 11019 CRN=PYEYTC05 SIZE=36 OUTPUT
0000 02026061 80F0F6F1 F340F3F0 C4C5C340 *...0613 30DEC *
0010 D3D6D515 C7C5D540 D4E2C740 40404040 *LON.GEN MSG *
0020 F0156E4E 00000000 *0.....

ALCS 2.4.1 MTRACE 30/12/08
MA b 22/002
Connected to remote server/host tsopye.hursley.ibm.com using lu/pool TCP00004 and port 23 hp psc 1200 series on USB001
start 8:48:32 - AT... PCSWS.EXE ALCS Messag... Internet E... Command Pro... 100% 15:37 woensdag 19-1-2011
```

End of Document