

Three simple steps to get on-air with Max 7.0

01

Content and Hits panels

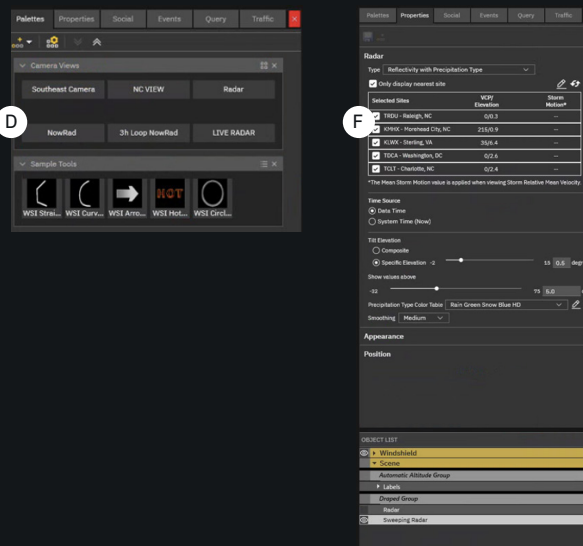
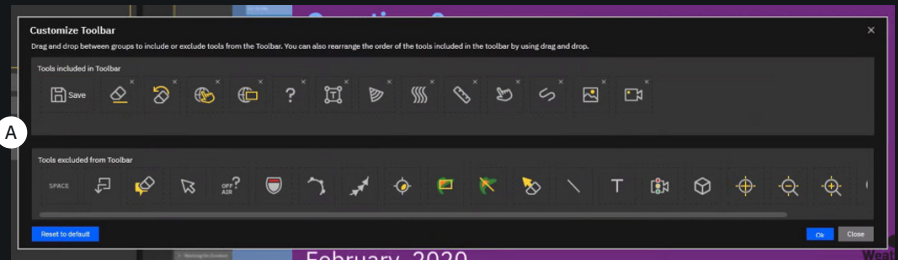
- A. The Content panel is located in the middle of the user interface (UI) directly below the Preview area and interactive toolbar.
- B. The Content panel no longer houses the Events and Social tabs. Please see 2C.
- C. The Hits panel extends down the left side of the UI.
- D. Alert templates, Hit windshields and style guide options are located directly under the Play-to-Air options on the top left side of each individual Hit.
- E. The Content and Hits panels are both adjustable in size. Click anywhere in the gaps between the windows and drag to adjust the size.



02

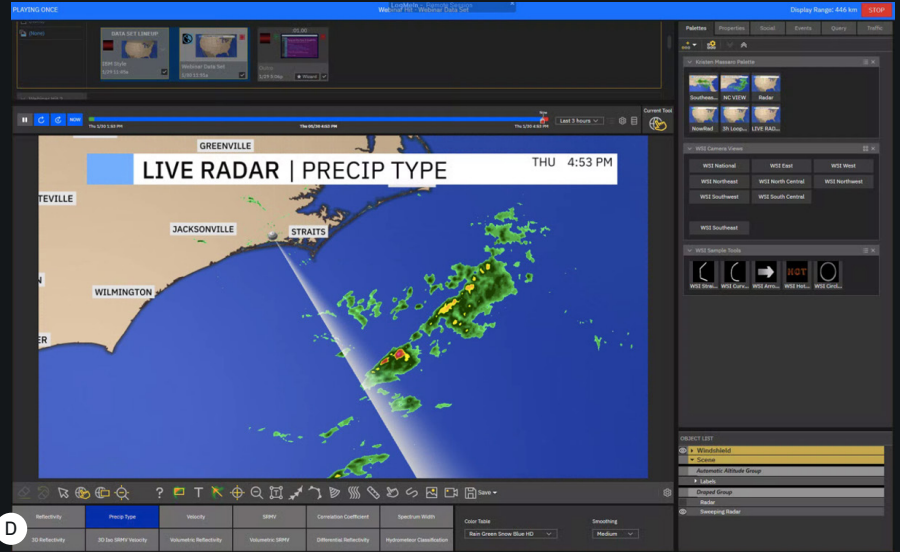
Custom toolbar and interactive panel

- A. You can customize the interactive toolbar to include, exclude or re-arrange any tools. This customization is saved per workspace.
- B. A new "space" icon allows for extra organization on the toolbar.
- C. The interactive panel houses the Palettes, Properties, Events, Social, Traffic and Query tabs.
- D. You can organize palettes to display as either a text or thumbnails.
- E. You now have access to unlimited palettes in both Preview and Play-to-Air modes instead of only two.
- F. The object list for a data set sits directly beneath the interactive tabs.
- G. The interactive panel is the only panel that cannot adjust in size.



Play-to-Air mode

- This mode now offers a larger Preview display. Hits are located on top of the Preview window.
- The interactive panel locks so that it is available to use live while on-air.
- Radar moments become available whenever sweeping/live radar is available in the data set.
- Radar moments and Banner Text and Legends can be dynamically changed with the click of a button.



Additional notes:

- The appearance and organization of the toolbar are customizable, but the functionality remains. Once the toolbar setting is customized, the setting is universally saved for the entire Max system.
- Radar moments are only available in Play-to-Air mode. You will not be able to use the radar and moment button functionality while in Preview mode.
- Three vertical white dots on a toolbar indicate that extra tools are available but not displayed due to the current width of the panel.