

# WSI Fusion

Global flight operations  
management for commercial  
airlines



## Highlights

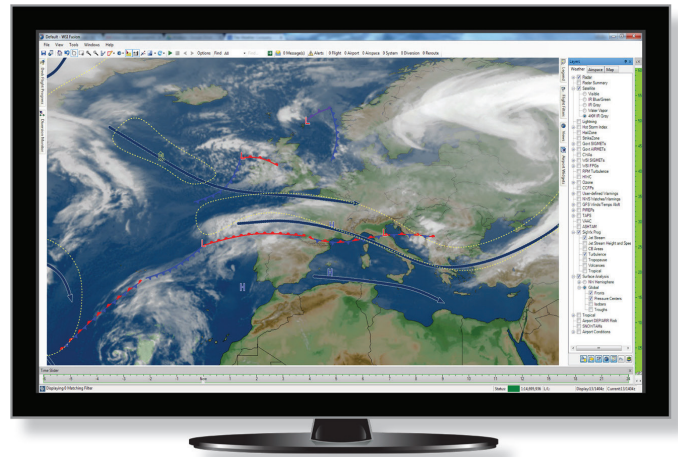
- Monitor flight progress with Global Flight Tracking
- Leverage Global Weather Content
- Proactively manage operations with Intelligent Alerting
- Helps improve operational efficiency with Traffic Flow Management Tools
- Streamline workflow to maintain situational awareness



**Provide pilots and dispatchers a common view of disruptive weather and air traffic constraints**

The Weather Company, an IBM business, delivers WSI Fusion a proactive operations management solution that provides early insight into changing flight, airport and airspace conditions. Fusion enables customers to optimize operations and mitigate the impacts of disruptive events. This unique solution brings together global public and proprietary weather information, airspace constraints, flight tracking information and navigation data into a unified and clear operational picture to help operations management make more informed situational decisions.

Fusion's intelligent alerting engine continuously monitors conditions to identify and promptly notify operations personnel of potential problems that warrant attention and possible action. The ability to manage by exception and receive advance warning of potential problems can significantly improve operational flexibility and safety capabilities.



Designed to integrate with existing Air and Space Operations Center (AOC) systems such as flight planning, messaging and other proprietary data sources, Fusion provides data to help operators to efficiently monitor problems and communicate relevant information to an aircraft's crew.

Fusion is uniquely positioned to help dispatchers, operations personnel, and managers stay aware and ahead of changing conditions, so they can mitigate the impact of disruptive events and improve safety, situational awareness, fuel planning, productivity and operational performance.

WSI Fusion is an operational decision support tool provided by one of the most trusted weather provider in the aviation industry.

### Monitor flight progress with Global Flight Tracking

- Offers new FAA high-quality System Wide Information Management (SWIM) data feed for US and UK flight following.
- With new Global Surveillance The Weather Company now offers a new blended data source: WSI Blend + Surveillance.
- Incorporates EUROCONTROL Electronic Flight Data (EFD) for European flight watch.
- Supports integration of ACARS and other position sources.
- Projects flight position in areas where actual position reports may be unavailable.
- Provides airport surface tracking reports that include aircraft position and movement data. These reports enable operations teams to monitor taxi times, runway congestion and gate traffic. Data is only available for selected airports.

### Leverage Global Weather content to help airlines ensure safety of flight with Global Weather Content

- Displays operationally required content including winds aloft, temperatures, SIGMETs and AIRMETs for preflight analysis.
- Incorporates premium Enroute Hazards and terminal area forecast services issued by The Weather Company's Global Forecast Center.
- Depicts convective activity worldwide with The Weather Company's proprietary real-time Global Lightning Network® and SATrad for areas where radar may be lacking.
- Provides early insight into operational restrictions with proprietary Forecast Precipitation.

### Helps improve operational efficiency with Traffic Flow Management Tools

- Highlights operational irregularities such as route deviations and diversions.
- Features proprietary flow pattern recognition for earlier detection of airborne holding.
- Includes domestic and premium international NOTAMs for terminal and airspace restrictions.
- Provides pre-flight and enroute route analysis including FAA Reroute Advisories, Preferred Routes, CDRs and oceanic tracks.
- Integrates graphical RAIM and route analysis to allow users to take advantage of advanced navigational procedures.

- Monitors FAA Temporary Flight Restrictions, Flow Constrained & Evaluation Areas, Airspace Flow Programs and airport traffic management initiatives.
- Provides Predictive Airport Analytics for projected congestion, taxi times and runway configurations to allow operations to make informed, data-based decisions.

### Proactively manage operations with Intelligent Alerting

- Provides graphical depiction of airport restrictions based on airport weather conditions.
- Detects terminal meteorological restrictions and traffic delays.
- Manages by exception by detecting route of flight hazard intersection.
- Focuses on dynamic constraints through user-defined warning areas.



### Streamline workflow to maintain situational awareness

- Highly configurable, based on centrally stored user preferences.
- Allows users to manage and share settings such as alerting rules, flight filters, maps and flight list views.
- Helps reduce complexity by offering a single source for global flight, weather and airspace content.
- Offers enterprise integration with flight planning, flight scheduling and many other solutions.
- Promotes common situational awareness through common content used by air crew and airport operations.
- Relies on an Active/Active system architecture keeping primary and disaster recovery systems running concurrently.

Call us toll-free at +1-800-USA-2FLY or visit us on the Web at [business.weather.com](http://business.weather.com)

### About The Weather Company, an IBM Business

The Weather Company, an IBM Business, helps people make informed decisions and take action in the face of weather. The company offers the most accurate forecasts globally with personalized and actionable weather data and insights to millions of consumers, as well as thousands of marketers and businesses via Weather's API, its business solutions division, and its own digital products from The Weather Channel ([weather.com](http://weather.com)) and Weather Underground ([wunderground.com](http://wunderground.com)).

The company delivers around 25 billion forecasts daily. It's products include the world's most downloaded weather app, a network of 250,000 personal weather stations, a top-20 U.S. website, one of the world's largest IoT data platforms, and industry-leading business solutions.

Weather Means Business™. The world's biggest brands in aviation, energy, insurance, media, and government rely on The Weather Company for data, technology platforms and services to help improve decision-making and respond to weather's impact on business.

For more, visit [theweathercompany.com](http://theweathercompany.com)



© 2017 Copyright The Weather Company,  
an IBM Business

The Weather Company, an IBM Business  
400 Minuteman Rd  
Andover, MA 01810

Produced in the United States of America  
July 2017

IBM, the IBM logo and [ibm.com](http://ibm.com) are trademarks of International Business Machines Corp., registered in many jurisdictions worldwide. The Weather Company®, The Weather Company® and device, are trademarks or registered trademarks of TWC Product and Technology, LLC, an IBM Company. Other product and service names might be trademarks of IBM or other companies. A current list of IBM trademarks is available on the Web at “Copyright and trademark information” at [www.ibm.com/legal/copytrade.shtml](http://www.ibm.com/legal/copytrade.shtml).

This document is current as of the initial date of publication and may be changed by IBM at any time. Not all offerings are available in every country in which IBM operates.

The information in this document is provided “as is” without any warranty, express or implied, including without any warranties of merchantability, fitness for a particular purpose and any warranty or condition of non-infringement.

IBM products are warranted according to the terms and conditions of the agreements under which they are provided.

The performance data and client examples cited are presented for illustrative purposes only. Actual performance results may vary depending on the specific configurations and operating conditions. It is the user’s responsibility to evaluate and verify the operation of any other products or programs with IBM product and programs.

Statement of Good Security Practices: IT system security involves protecting systems and information through prevention, detection and response to improper access from within and outside your enterprise. Improper access can result in information being altered, destroyed, misappropriated or misused or can result in damage to or misuse of your systems, including for use in attacks on others. No IT system or product should be considered completely secure and no single product, service or security measure can be completely effective in preventing improper use or access. IBM systems, products and services are designed to be part of a lawful, comprehensive security approach, which will necessarily involve additional operational procedures, and may require other systems, products or services to be most effective. IBM does not warrant that any systems, product or services are immune from, or will make your enterprise immune from, the malicious or illegal conduct of any party.