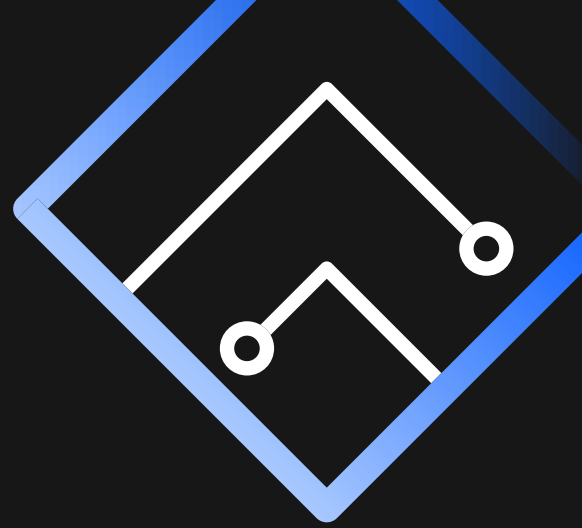


# IBM Integration Management Platform for Oracle Cloud



Monitor and manage your enterprise-wide integration landscape with confidence using a single platform



## Need for an enterprise integration management platform

The need for having a single pane of glass to monitor and manage all enterprise level integrations is paramount. Equally important is to have full flexibility in choosing which execution information to display for those integrations and what remedial measures to adopt, if any. The characteristics of a good integration management platform are as follows..

- Robust error handling capabilities and access to context sensitive information
- Comprehensive configurable dashboard to control display content and format
- Alert mechanism to facilitate effective and timely remediation
- Data reconciliation between source and target applications
- Automated logging of incidents in case of errors



## Challenges with existing integration management platforms

It is typical of any integration platform to come with its own monitoring dashboard. Not only does it lead to inconsistency across such solutions in a hybrid integration landscape – quite often there are limitations in these platforms as well, as follows

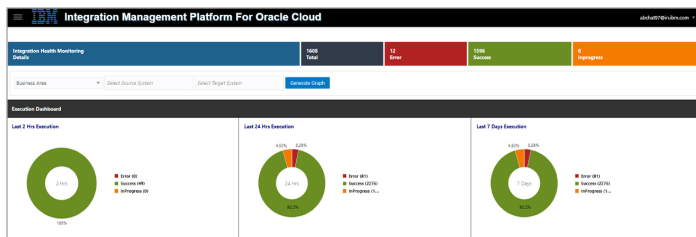
- Minimum control on the data horizon (which period, which source / target system, etc. to display for)
- Little or no control on data segmentation (group by source / target / business function, etc.)
- Summary information only, lacking specific actionable details
- Lack of integration with other downstream systems, such as ticketing tools



## IBM Integration Management Platform for Oracle Cloud

The IBM Integration management platform for Oracle attempts to address the requirements and overcome the challenges stated above, by providing for the following features

- Range of easy options to onboard integrations onto the platform
- Selective enablement of monitoring, notification, reconciliation and incident creation features at an integration level via simple configurations
- Configurable dashboard to allow for preferential segmentation of data to be displayed via data filters (source / target, business domain, etc.) and profile options (time intervals, retention period, etc.)
- Multi-level drilldown backed by comprehensive error handling
- Configurable attributes to capture context specific information
- Notification mechanism to alert concerned authorities in case of errors
- Integration with incident management tool to create incidents for the failed integrations
- Time series graph to monitor system load for effective scheduling of critical integrations



### Learn more

IBM and Oracle Alliance [ibm.com/services/oracle](https://ibm.com/services/oracle)

IBM on Oracle Cloud Marketplace  
[cloudmarketplace.oracle.com/marketplace/service/IBM](https://cloudmarketplace.oracle.com/marketplace/service/IBM)



## Components of the solution

The IBM Integration Management Platform comprises of the following components

- Intuitive UI (Oracle Visual Builder) to onboard integrations, manage monitoring, remediation and notification parameters, configure dashboard and visualize execution outcomes
- Pre-built integration flows (Oracle Integration Cloud) for data extraction / capture—exposed as REST APIs that can be invoked from the integration flows to be monitored
- Database components (Oracle Database Cloud)
- API-based integrations with Incident Management Platform (ServiceNow)



## Solution benefits

- Scalable, resilient, secure and fully cloud-native application
- API-based design allows for easy pluggability into existing integration landscape—thereby enabling uniform monitoring at scale
- Flexibility and control of dashboard deliver rich user experience
- Multi-level drilldowns provide end to end traceability
- Context sensitive attributes allow for record level reconciliation
- Automated alerts and incident creation ensure effective and timely remediation