

IBM Power Private Cloud Rack for Db2 Warehouse

A modern data warehouse solution

■
Highlights

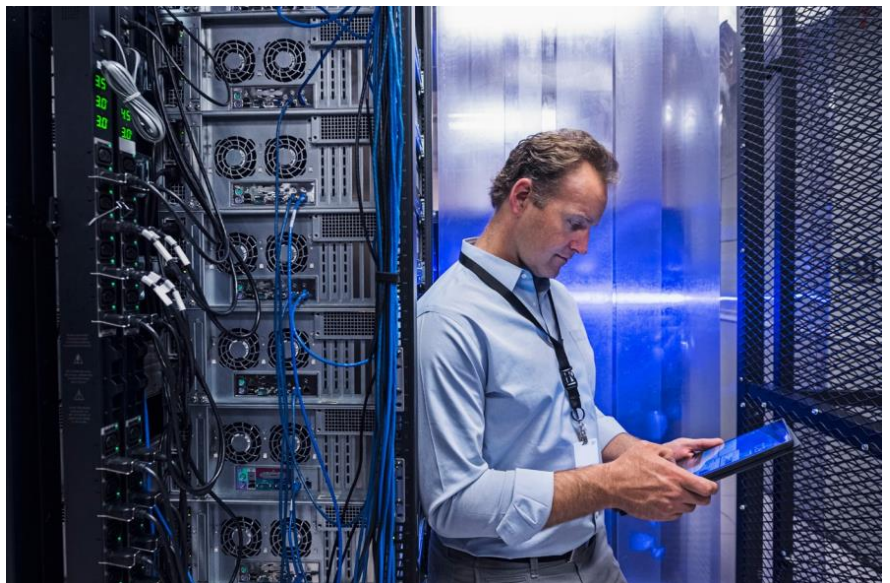
A complete configuration of servers, storage, switches and services

Prebuilt and delivered rack mounted

Scalable IBM Db2 data warehouse grows as your data increases

More than 59 zettabytes (ZB) of data will be created, captured, copied, and consumed in the world this year, according to the IDC Global DataSphere¹. And that creates new business opportunities for IT solutions to gain new insights in real time. With increasing volume, velocity, and variety of data, it's now more challenging than ever for organizations that run mission-critical operations to access data and gain insights in real time. To support real-time insights across all of your data, you need a trusted, scalable, high-performance data warehouse solution that can handle complex workloads.

IBM® Power® Private Cloud Rack for Db2 Warehouse is part of the IBM next generation of on-premises analytics solutions and a follow-on to the IBM PureData® System for Operational Analytics (PDOA) and the IBM Integrated Analytics System (IIAS), based on IBM Db2® Warehouse software. It comes preconfigured and ready to go with everything you need to support modern data warehousing applications.



¹ https://www.idc.com/getdoc.jsp?containerId=IDC_P38353

A complete configuration of servers, storage, switches, and services

IBM Power Private Cloud Rack for Db2 Warehouse is a complete data warehouse solution. Simplify and accelerate your data warehouse deployment with a Power10 processor-based preconfigured solution that includes everything you need to more securely analyze your data on-premises. As your future needs change, this solution architecture lets you easily scale and adapt the configurations that you build for your data warehouse needs today. As part of each configuration, the appropriate services and software licenses are customized and included as required by your installation. These services can range from basic installation and Db2 configuration through data migration and ongoing support and maintenance.

Prebuilt and delivered rack mounted

Ease into a Db2 data warehouse with a preconfigured, all-in-one design that eliminates guess work. Get your on-premises data warehouse up and running in days instead of weeks or months to start transforming your business faster². E-config enables the full stack, preselected, and configured as a “solution edition” setup. Base racks are available in small, medium, and large sizes. Each base rack includes three IBM Power S1022 servers used as Red Hat® OpenShift® management nodes. Expansion options are added to the base rack and take advantage of the base rack OpenShift management nodes.

Scalable IBM Db2 data warehouse grows as your data increases

The data warehouse starts small but can grow as your needs do. Expansion options are easy to add in the future as the workload grows. Appropriate network switches are included for connection to the base rack and other expansion racks. IBM FlashSystem® adds simplicity and consolidation. IBM experts help make sure that all data and applications are migrated and modernized to the new environment while minimizing risks to your operations.

Conclusion

The IBM Power Private Cloud Rack for Db2 Warehouse provides a complete solution for the modernization of data warehouse workloads. This architecture of equipment, software and services helps accelerate both the production and performance of your data warehousing requirements.

For more information

To learn more about IBM Power Private Cloud Rack for Db2 Warehouse, contact your IBM representative or IBM Business Partner, or visit ibm.com/products/power-s1022.

Compute Models		BRS	BRM	BRL	BRL + ERS	BRL + ERM	BRL + ERL	BRL + 2xE RL	BRL + 3xE RL	BRL + 5xE RL	BRL + 7xE RL
		(1/3 Rack)	(2/3 Rack)	(1 Rack)	(1+1/3 Rack)	(1+2/3 Rack)	(2 Rack)	(3 Rack)	(4 Rack)	(6 Rack)	(8 Rack)
Compute	Worker Nodes ¹	3	5	7	11	14	17	27	37	57	77
	Active Cores for Db2 Warehouse ²	48	96	144	216	288	360	576	792	1,224	1,656
	9.6 TB NVMe Drives	16	32	48	72	96	120	192	264	408	552
Storage	Protected TB	107 TB	214 TB	321 TB	482 TB	643 TB	804 TB	1,286 TB	1,768 TB	2,732 TB	3,696 TB
	Tier 1 User Data (TB) ³	74 TB	149 TB	224 TB	337 TB	450 TB	562 TB	900 TB	1,237 TB	1,912 TB	2,587 TB
	BRS=Base Rack Small, BRM=Base Rack Medium, BRL=Base Rack Large, ERS=Expansion Rack Small, ERM= Expansion Rack Medium, ERL= Expansion Rack Large										
Storage Models ⁴		TSS	TSM	TSL	TSL+ESS	TSL+ESM	TSL+ESL	TSL+2xE SL	TSL+3xE SL	TSL+5xE SL	TSL+7xE SL
Storage	19.2 TB Flash Drives	8	16	24	36	48	60	96	132	204	276
	Protected TB	107 TB	214 TB	358 TB	537 TB	716 TB	895 TB	1,432 TB	1,969 TB	3,043 TB	4,117 TB
	Tier 2 User Data (TB) ³	107 TB	214 TB	358 TB	537 TB	716 TB	895 TB	1,432 TB	1,969 TB	3,043 TB	4,117 TB
TSS= Tiered Storage Small, TDM= Tiered Storage Medium, BRL= Tiered Storage Large, ESS=Expansion Storage Small, ESM= Expansion Storage Medium, ESL= Expansion Storage Large											
¹ There is 1 stand by Worker Node in each rack for high availability ² Total number of worker cores, and therefore Db2 Warehouse Cartridge (Part# DOAFLZX) VPCs required to run configuration ³ Tier 1 and Tier 2 User Data capacity in this table is expressed as TB of Compressed User Data. Assume 3x to 4x compression of user data. ⁴ Storage Models/Racks can be added to a Compute Model Rack non disruptively in the field requiring only downtime for redistribution of User Data. ⁵ In Storage Models 100% of protected capacity is available for User Data.											

² System is pre-configured for quick integration into the data center.

© Copyright IBM Corporation 2023

IBM Corporation
New Orchard Road
Armonk, NY 10504

Produced in the
United States of America
June 2023

IBM, the IBM logo, Db2, IBM FlashSystem, IBM PureData, and Power are trademarks or registered trademarks of International Business Machines Corporation, in the United States and/or other countries.. Other product and service names might be trademarks of IBM or other companies. A current list of IBM trademarks is available on ibm.com/trademark.

Red Hat and OpenShift are trademarks or registered trademarks of Red Hat, Inc. or its subsidiaries in the United States and other countries.

This document is current as of the initial date of publication and may be changed by IBM at any time. Not all offerings are available in every country in which IBM operates.

It is the user's responsibility to evaluate and verify the operation of any other products or programs with IBM products and programs. THE INFORMATION IN THIS DOCUMENT IS PROVIDED "AS IS" WITHOUT ANY WARRANTY, EXPRESS OR IMPLIED, INCLUDING WITHOUT ANY WARRANTIES OF MERCHANTABILITY, FITNESS FOR A PARTICULAR PURPOSE AND ANY WARRANTY OR CONDITION OF NON-INFRINGEMENT. IBM products are warranted according to the terms and conditions of the agreements under which they are provided.

Statement of Good Security Practices: No IT system or product should be considered completely secure, and no single product, service or security measure can be completely effective in preventing improper use or access. IBM does not warrant that any systems, products or services are immune from, or will make your enterprise immune from, the malicious or illegal conduct of any party.

