

# IBM Maximo Spatial Asset Management

*Dynamically visualize asset relationships with geographic information system technology*



---

## Highlights

- Seamless user experience provides access to dynamic GIS functionality, instead of simply viewing a static map
  - Aligns with the specific business needs and improves work planning and analysis while eliminating the need for data duplication
  - Leveraging GIS functionality inside Maximo® creates efficiencies in business processes and improves communication
  - Allows organization to take advantage of data that is not maintained in their GIS systems, but provides valuable insights for decision making
  - New features enhance performance, usability and security
- 

IBM Maximo Spatial Asset Management allows asset managers to visualize the spatial relationships among managed assets and other mapped features, such as roads, buildings and pipelines. This creates levels of awareness and insight that tabular systems using numbers without graphics cannot provide.

Working closely with the market-leading provider of geographic information systems (GIS) solutions, Esri®, IBM Maximo Spatial Asset Management provides users with visibility into complex GIS information. This solution provides a geospatial context of work, assets and relevant land-based features, which improves reliability, longevity and efficient work execution.

IBM Maximo Spatial Asset Management not only gives Maximo users insight into GIS-related data, but GIS users also gain visibility into the business processes around work and asset management activities, which are equally important.

## New and enhanced features

- Technology migrated to a flexible, proven JavaScript™/REST-style architecture, which enhances performance and usability, while enabling the use of Maximo security and configuration options
- Support for multiple geodatabases provides the ability to present different data to different users based on location or role
- Complete map configuration and geodatabase per Maximo site
- Service address capabilities allow for consistent addressing, the ability to search based on address and the display of nongeospatial referenced work orders or assets on the map
- Temporary representation (star) based on feature class or address of locations and assets that are related to the current record
- Create work orders or service requests based on a set of assets and/or locations that have been selected on the map using the query/selection tool.





© Copyright IBM Corporation 2012

IBM Corporation  
Software Group  
Route 100  
Somers, NY 10589 U.S.A.

Produced in the United States of America  
February 2012

IBM, the IBM logo, [ibm.com](http://ibm.com), Maximo, and Tivoli are trademarks or registered trademarks of International Business Machines Corporation in the United States, other countries, or both. If these and other IBM trademarked terms are marked on their first occurrence in this information with a trademark symbol (® or ™), these symbols indicate U.S. registered or common law trademarks owned by IBM at the time this information was published. Such trademarks may also be registered or common law trademarks in other countries. A current list of IBM trademarks is available on the web at “Copyright and trademark information” at [ibm.com/legal/copytrade.shtml](http://ibm.com/legal/copytrade.shtml)

Java and all Java-based trademarks and logos are trademarks or registered trademarks of Oracle and/or its affiliates.

Other product, company or service names may be trademarks or service marks of others.

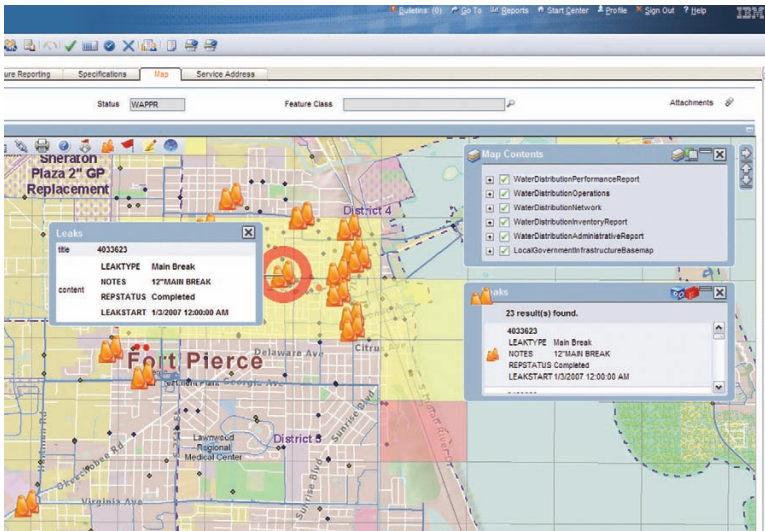
Product data has been reviewed for accuracy as of the date of initial publication. Product data is subject to change without notice. Any statements regarding IBM's future direction and intent are subject to change or withdrawal without notice, and represent goals and objectives only.

THE INFORMATION PROVIDED IN THIS DOCUMENT IS DISTRIBUTED “AS IS” WITHOUT ANY WARRANTY, EITHER EXPRESS OR IMPLIED. IBM EXPRESSLY DISCLAIMS ANY WARRANTIES OF MERCHANTABILITY, FITNESS FOR A PARTICULAR PURPOSE OR NON-INFRINGEMENT.

The customer is responsible for ensuring compliance with legal requirements. It is the customer's sole responsibility to obtain advice of competent legal counsel as to the identification and interpretation of any relevant laws and regulatory requirements that may affect the customer's business and any actions the customer may need to take to comply with such laws. IBM does not provide legal advice or represent or warrant that its services or products will ensure that the customer is in compliance with any law or regulation.



Please Recycle



IBM Maximo Spatial Asset Management allows asset managers to dynamically visualize the spatial relationships among managed assets and other mapped features, such as roads, buildings and pipelines.

## Why IBM

IBM has industry-leading IT project management and systems integration capabilities necessary to deliver complex end-to-end solutions. Enterprise GIS solutions are now often seen as an IT deployment, and IBM is well positioned to help organizations address their business problems through enterprise GIS.

## For more information

To learn more about IBM Maximo Spatial Asset Management, please contact your IBM marketing representative or IBM Business Partner, or visit the following Web site: [ibm.com/maximospatial](http://ibm.com/maximospatial)