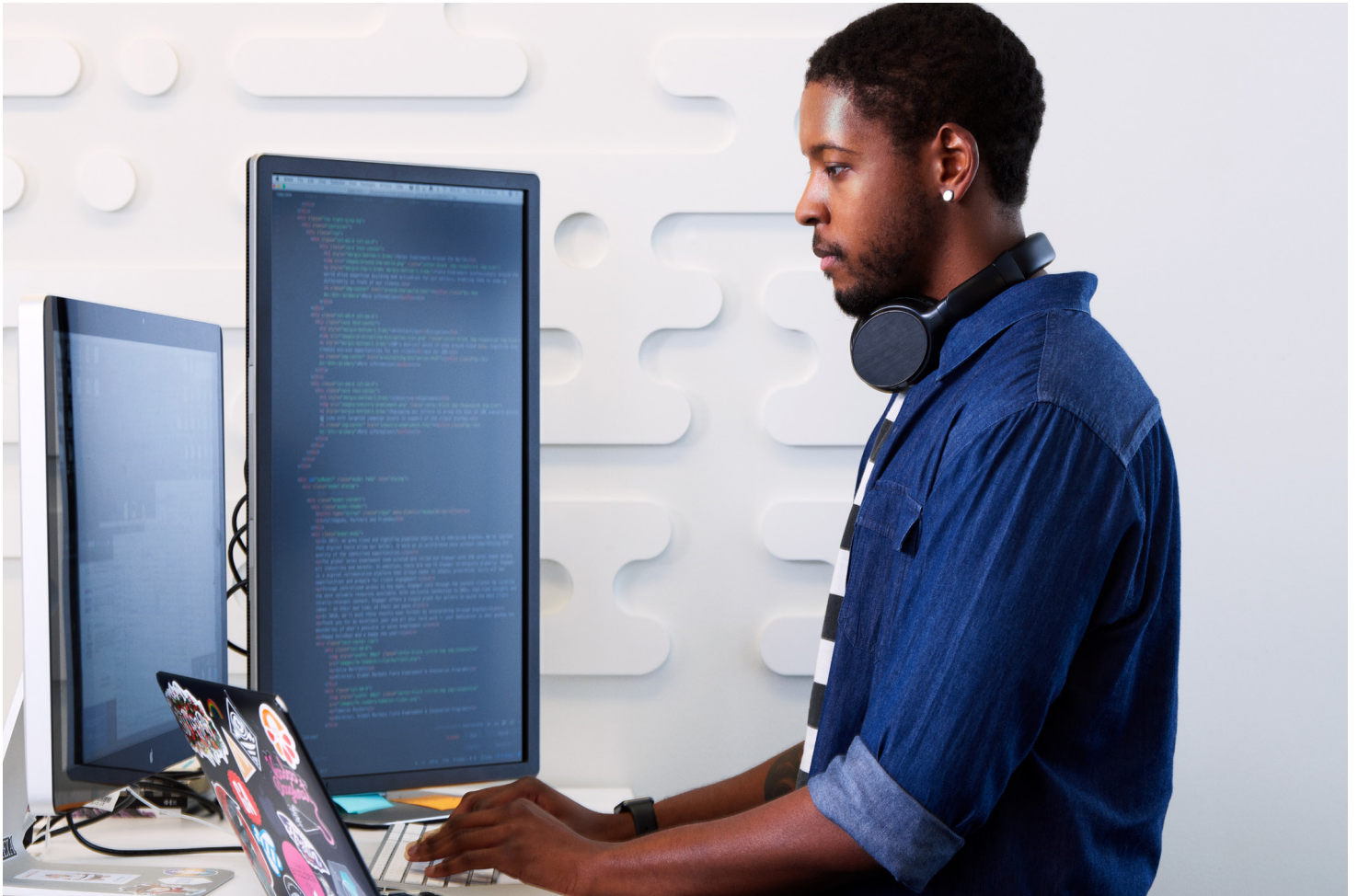


Build AI-based solutions faster with IBM embeddable AI

Partners can now reduce development time to create trustworthy AI-powered solutions.



IBM ecosystem partners, including large and small independent software vendors, now have the flexibility to use the same core AI technology powering IBM products, such as IBM Watson® Assistant and IBM Watson Discovery, to create their own differentiated solutions—in less time and with fewer resources.

IBM provides developer-friendly and trustworthy AI technologies in a portfolio of embeddable AI libraries, applications and APIs developed by IBM researchers.

The portfolio, called IBM embeddable AI, helps partners focus their skills, resources and expertise on building unique experiences rather than re-creating components that already exist, such as natural language processing (NLP) models.

A new and faster way to AI

IBM embeddable AI is an expertly designed collection of enterprise-grade core AI technologies in a flexible form factor that makes it easy to embed into third-party solutions.

Taking advantage of embeddable AI helps bring solutions to market faster, simplifies the skills needed to build trustworthy AI software, and unlocks new business opportunities.

Build your next AI solution with IBM

The ability to embed trusted and proven AI technology into solutions can significantly lower the skills barrier and accelerate development cycles.

In addition, when partners build with IBM embeddable AI, they are using the same core AI technology found in IBM market-leading products. Gartner® has recognized IBM as a Leader for Watson Assistant and Watson Discovery in the 2022 Gartner Magic Quadrant™ for Enterprise Conversational AI and 2021 Gartner Magic Quadrant™ for Insight Engines.

IBM embeddable AI is unique because it offers:



Fit for purpose components—embeddable AI is easily consumable and scalable.



Developer value—developers can build AI-powered solutions faster than before.

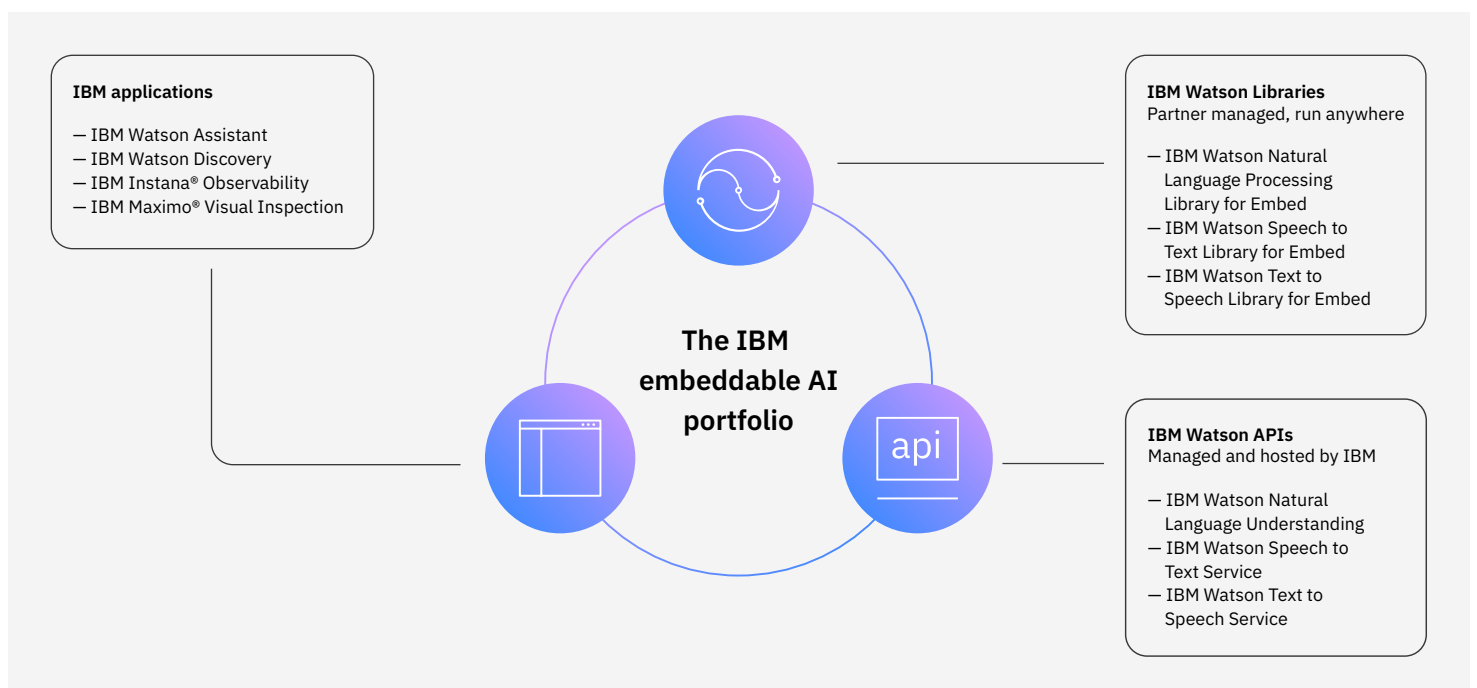


APIs with no restrictions—developers own the data, UX and orchestration.



Availability across multiple platforms—developers can build and deploy embeddable AI across any library or container with no platform pre-requisite.

Partners building with IBM have access to technical expertise, resources and grants to offset development costs, as well as help to unlock market opportunities with co-selling and co-marketing support.



Use cases for embeddable AI

Today, IBM partners are already making use of embeddable, trustworthy AI in a range of applications—such as digital assistants that augment human interaction, visual inspection capabilities in manufacturing and shop floors, and intelligent operations for observability and troubleshooting.

The following scenarios illustrate how natural language processing can be used to positively impact an organization. Learn how you can reap the benefits of [IBM Watson Natural Language Processing Library for Embed](#).



Voice of the customer or employee

Analyze customer or employee feedback about their experiences and satisfaction with products, services or the workplace.

How

Use IBM Watson NLP Library for Embed to find insights in vast amounts of survey data, social media contents, and conversation logs to improve performance and understand customer or employee behavior.

Benefits

Uncover trends and insights from unstructured input to improve customer and employee satisfaction.



Documents processing

Use IBM Watson NLP Library for Embed to accelerate classifying, sorting, processing of extracted semi-structured and unstructured data in document processing tasks.

How

IBM Watson NLP Library for Embed can classify content, extract information for downstream processing, and gather insights in applications including contracts, compliance, and application processing.

Benefits

Reduce time spent on repetitive document processing tasks, and reduce errors. Understand risks and comply with regulations.



Expert assist

Provide knowledge workers with answers in real time from a large body of information to augment awareness and increase productivity.

How

Watson provides AI-powered search and text analytics capabilities to empower an organization's experts and knowledge workers with the right information at the right time, in the right context.

Benefits

Increased worker productivity improves quality of work and customer satisfaction.



Social listening and brand intelligence

Monitor brand reputation and perception on social channels. Assess pulse of the market and gauge effectiveness of advertising and publicity campaigns.

How

IBM Watson NLP Library for Embed can mine insights from piles of unstructured data posted through various channels; correlate with campaigns and public relations to gauge impact.

Benefits

Analyze and evaluate social media information to improve product marketing and planning. Monitor brand image and take actions on customer grievances or ride on positive feedback to promote products and services.



When trust is needed most

At IBM we believe that only by embedding ethical principles into AI applications and processes can we build systems based on trust—it's an imperative for us, though 74% of organizations are not working on reducing unintended bias in their AI solutions.¹

Since 2015, IBM has been advocating and implementing principles and techniques for trustworthy AI. The AI Ethics Board was established as a central, cross-disciplinary body to support a culture of ethical, responsible, and trustworthy AI throughout IBM.

Fairness, explainability and privacy are mandatory in all cases, and provided by IBM embeddable AI.

Learn more:

[AI ethics at IBM →](#)

[Get the paper from the World Economic Forum:](#)

[Responsible Use of Technology—The IBM Case Study →](#)

Let's start building together

Together we can close the skills gap and reduce development time to create trustworthy AI-powered solutions. With IBM embeddable AI, you can create and enhance your own solutions to capture new business opportunity and bring greater value to clients.

[Learn how to start your embeddable AI journey →](#)

1. IBM Global AI Adoption Index 2022

© Copyright IBM Corporation 2023

IBM Corporation
New Orchard Road
Armonk, NY 10504

Produced in the
United States of America
January 2023

IBM, the IBM logo, IBM.com, IBM Watson, Instana, and Maximo are trademarks or registered trademarks of International Business Machines Corporation, in the United States and/or other countries. Other product and service names might be trademarks of IBM or other companies. A current list of IBM trademarks is available on ibm.com/trademark.

This document is current as of the initial date of publication and may be changed by IBM at any time. Not all offerings are available in every country in which IBM operates.

THE INFORMATION IN THIS DOCUMENT IS PROVIDED "AS IS" WITHOUT ANY WARRANTY, EXPRESS OR IMPLIED, INCLUDING WITHOUT ANY WARRANTIES OF MERCHANTABILITY, FITNESS FOR A PARTICULAR PURPOSE AND ANY WARRANTY OR CONDITION OF NON-INFRINGEMENT. IBM products are warranted according to the terms and conditions of the agreements under which they are provided.

Gartner does not endorse any vendor, product or service depicted in its research publications and does not advise technology users to select only those vendors with the highest ratings or other designation. Gartner research publications consist of the opinions of Gartner's Research & Advisory organization and should not be construed as statements of fact. Gartner disclaims all warranties, expressed or implied, with respect to this research, including any warranties of merchantability or fitness for a particular purpose.

GARTNER is a registered trademark and service mark, and MAGIC QUADRANT is a registered trademark of Gartner, Inc. and/or its affiliates and are used herein with permission. All rights reserved.

