

With IBM IMS as the hub of your data and transactions, everything is possible.



Today's digital economy is based on trust. The expansive integration capabilities of IBM Information Management System (IMS™), coupled with its legendary qualities of service, make it easy for you to build trust into every interaction with your clients.



What's the key?

Pervasive encryption



Provides pervasive 100% encryption of IMS data, with minimal CPU overhead, zero app changes and zero SLA impact

Collectively, many of the Fortune 1000 companies process more than **50 billion secure transactions per day** in IMS.¹

Deeper insights



Reduces the cost of generating deep insights from the world's most valuable resource

Keeping your IMS data on IBM z® for analytics can **save you from 47%–75% of the cost required to move the data off platform.**²

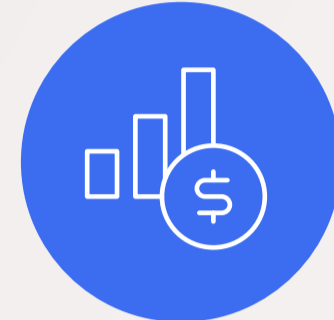
Open+ connected



Maximizes your IMS investment and generating returns through APIs and the cloud

Adopters of a connected mainframe strategy:
–Can achieve more than **300%+ ROI** and break even in **10 months.**³
–Average almost **\$200 million in additional revenue per year.**⁴

IMS Core Qs of Service



Provides superlative performance, reliability, availability and serviceability

Adopters of a connected mainframe **save 47%** on costs of operations over distributed infrastructure.⁵

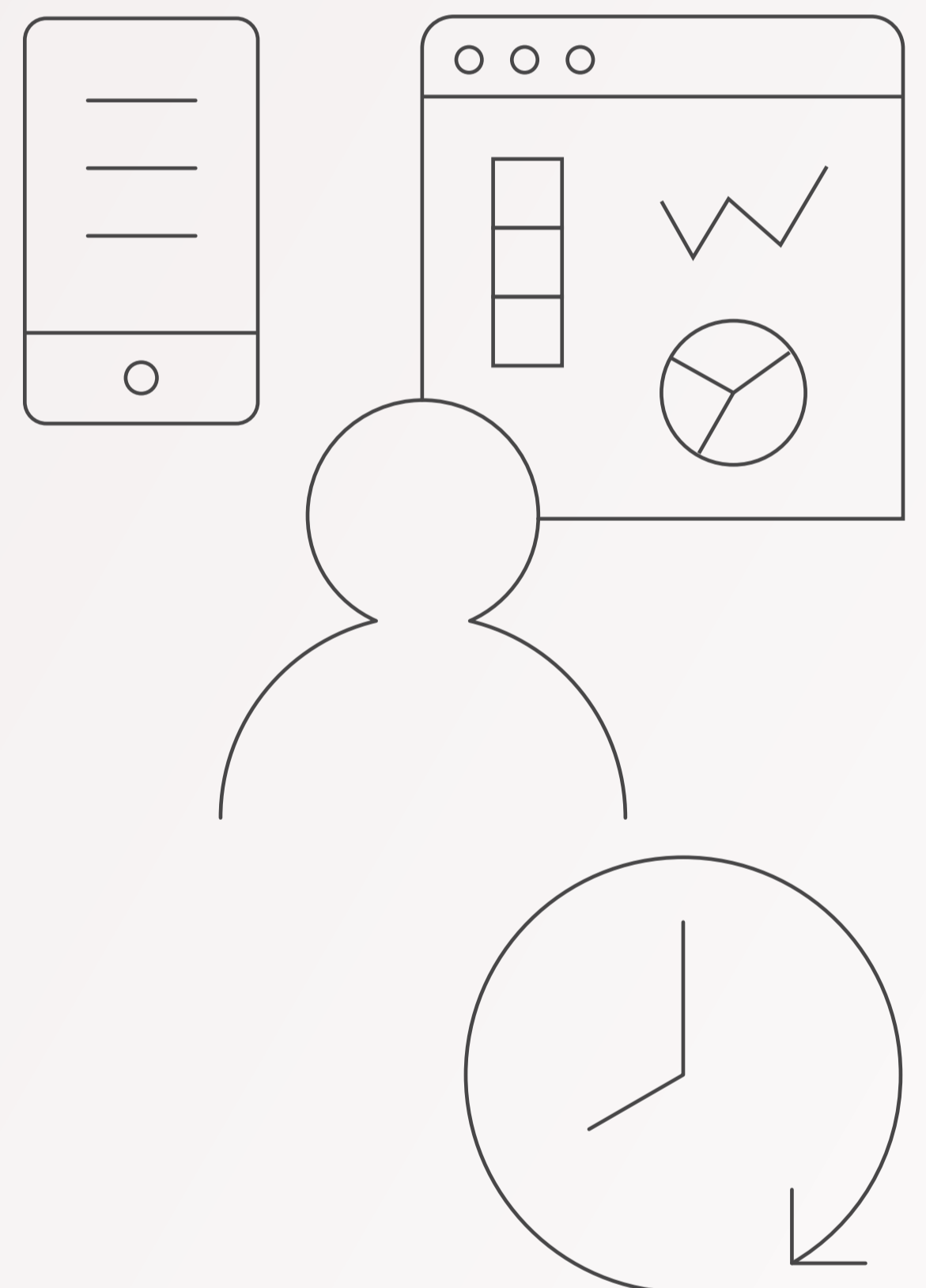
Create a customer-focused enterprise



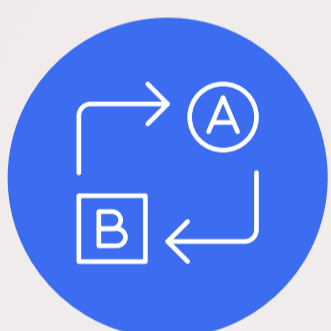
Deliver a more expansive and dynamic Java development experience



Provide a system management experience that is simpler and faster



Drive agility and efficiency



Benefit from a more dynamic, more highly available system



Grow with seamless scalability and high availability



Rely on IMS to be efficient and trouble free

Manage risk and compliance; optimize performance



Build more security into your mobile solutions



Benefit from auditability features critical to a connected mainframe



Deliver increased performance with new tuning options

See for yourself

Try the latest IBM z Systems® capabilities today at zero cost, and with no installation required.



Register for IBM z Systems trial

© Copyright IBM Corporation 2017. IBM, the IBM logo, IBM z, IBM z Systems and ibm.com are trademarks of International Business Machines Corp., registered in many jurisdictions worldwide. Other product and service names might be trademarks of IBM or other companies. A current list of IBM trademarks is available on the web at "Copyright and trademark information" at www.ibm.com/legal/copytrade.

¹ IBM IMS: The world depends on it.

² ibm.com/systems/z/solutions/real-time-analytics/etl-cost.html

³ IDC paper: *The Business Value of the Connected Mainframe for Digital Transformation*

⁴ IDC paper: *The Business Value of the Connected Mainframe for Digital Transformation*

⁵ IDC paper: *The Business Value of the Connected Mainframe for Digital Transformation*