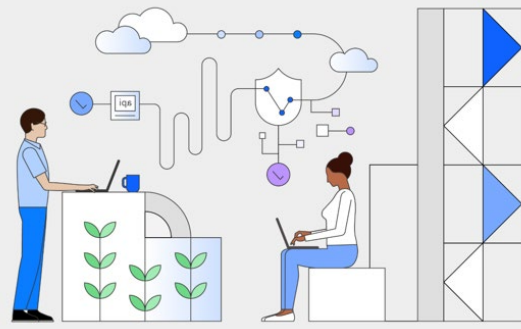


Mainframe Skills Depot



IBM Digital Badges are reinventing how credentials are used to recognize achievement and contribution. Use digital badges to demonstrate your unique skills.

[Read the badge FAQs](#)



IBM Z 101 Certificate

Badge description

This credential earner has developed critical skills in IBM Z® hardware, operating systems, and software, especially around z/OS®. Through hands-on labs working on a live IBM Z server, the earner has gained real world experience and is equipped to pursue a career as a mainframe application developer, system programmer, system administrator, or a DBA practitioner. The earner has orchestrated skills in Ansible®, Zowe®, Docker, REXX™, COBOL, VSAM, and TSO.

Earning Criteria

- Successfully complete the AP Computer Science Principles course
- Exploring Emerging Tech
- Successfully complete the Introduction to Enterprise Computing course
- Successfully complete the Essentials application course
- Introduction to IBM z/OS Badge
- Complete the IBM z16™ Single Frame hardware tour
- IBM Z Xplore – Concepts
- IBM Z Xplore – Advanced
- Introduction to System Programmer on IBM Z
- Introduction to z/OS Commands and Panels on IBM Z badge
- Introducing z/OS UNIX® System Services

If eligible, you will receive a Credly badge to your email after completing the challenges above.

Explore the skills gained and available jobs

- [IBM Z](#) (link resides outside of ibm.com)
- [JCL](#) (link resides outside of ibm.com)
- [REXX](#) (link resides outside of ibm.com)
- [TSO](#) (link resides outside of ibm.com)
- [Commands](#) (link resides outside of ibm.com)
- [Panels](#) (link resides outside of ibm.com)
- [Python](#) (link resides outside of ibm.com)
- [Application Developer](#) (link resides outside of ibm.com)
- [Enterprise Software](#) (link resides outside of ibm.com)
- [Security](#) (link resides outside of ibm.com)
- [System Administrator](#) (link resides outside of ibm.com)
- [Mainframe](#) (link resides outside of ibm.com)

Mainframe Skills Depot



IBM Digital Badges are reinventing how credentials are used to recognize achievement and contribution. Use digital badges to demonstrate your unique skills.

[Read the badge FAQs](#)



Mainframe System Administrator 201

Badge description

This credential earner has developed comprehensive skills in IBM Z for the role of system administrator. They have gained skills in system configuration, management, security, REXX, Db2®, IMS™, and CICS®. They have developed a strong foundation in mainframe administration and are equipped with the skills needed to manage day-to-day operations and tackle real-world challenges.

Earning Criteria

- [Successfully complete the z/OS Introduction - an IBM Redbooks video course.](#)
- [Earned the Mainframe Specialist – Job Control Language – Foundations 2.5 badge.](#)
- [Earned the z/OS REXX Programming badge.](#)
- [Successfully complete Introduction to the New Mainframe z/OS Basics \(Chapter 19: Network communications on z/OS\).](#)
- [Earned TCP/IP on z/OS Essentials - Level 1 badge.](#)
- [Successfully complete Networking on z/OS - Foundations.](#)
- [Successfully complete IBM z/OS Communications Server TCP/IP Implementation.](#)
- [Earned the z/OS Systems Services Structure badge.](#)
- [Earned the SMP/E for z/OS Workshop badge.](#)
- [Earned the Mainframe Specialist - Data Management Using DFSMS™ - Experienced z/OS 2.5 badge.](#)
- [Successfully complete VSAM Demystified.](#)
- [Successfully complete IBM CICS: An IBM Redbooks video course.](#)
- [Earned the Mainframe Operator - CICS v5.6 Operations badge.](#)
- [Successfully complete IMS 15 Introduction.](#)
- [Earned the Mainframe Specialist - Db2 V13 Operations badge.](#)
- [Earned Mainframe Specialist - Mainframe Security - Foundations z/OS 2.5 badge.](#)
- [Earned IBM Z Resiliency badge.](#)

If eligible, you will receive a Credly badge to your email after completing the challenges above.

Explore the skills gained and available jobs

- [IBM Z](#) (link resides outside of ibm.com)
 - [CICS](#) (link resides outside of ibm.com)
 - [REXX](#) (link resides outside of ibm.com)
 - [Db2](#) (link resides outside of ibm.com)
 - [IMS](#) (link resides outside of ibm.com)
 - [JCL](#) (link resides outside of ibm.com)
 - [TSO](#) (link resides outside of ibm.com)
 - [SMP](#) (link resides outside of ibm.com)
 - [z/OS](#) (link resides outside of ibm.com)
- [System Services](#) (link resides outside of ibm.com)
 - [Enterprise Software](#) (link resides outside of ibm.com)
 - [Security](#) (link resides outside of ibm.com)
 - [System Administrator](#) (link resides outside of ibm.com)
 - [Mainframe](#) (link resides outside of ibm.com)

Mainframe Skills Depot



IBM Digital Badges are reinventing how credentials are used to recognize achievement and contribution. Use digital badges to demonstrate your unique skills.

[Read the badge FAQs](#)



**Mainframe
Systems
Administrator 301**

IBM Professional Certificate



Mainframe System Administrator 301

Badge description

This credential earner has completed advanced training toward their advancing career as an IBM Mainframe System Administrator. The earner has developed advanced system programming and automation, performance optimization, data management, and disaster recovery skills. This badge earner has been exposed to high-level administrative responsibilities and can design and implement robust solutions for large-scale mainframe infrastructures.

Earning Criteria

- [Successfully completed IBM z/OS Container Extensions.](#)
- [Successfully earned Modernization Applications with IBM CICS badge.](#)
- [Successfully completed Z APM Connect Fundamentals.](#)
- [Successfully earned Fundamentals for Zowe badge.](#)
- [Successfully completed IBM \(z/OS\) - Working with the Mainframe 2.5.](#)
- [Successfully earned Mainframe Systems Programmer - Systems Programming - Foundations 2.5 badge.](#)
- [Successfully earned Mainframe Specialist – z/OS – Foundations 2.5 badge.](#)
- [Successfully earned Mainframe Specialist – z/OS – Experienced 2.5 badge.](#)
- [Successfully earned Mainframe Specialist – z/OS – Expert 2.5 badge.](#)
- [Successfully completed z/OS - Advanced - Tips and Tricks 2.5.](#)
- [Successfully earned Mainframe Specialist – File Transfers – Foundations badge.](#)
- [Successfully earned Mainframe Systems Programmer – Mainframe Performance – Fundamentals 2.5 badge.](#)
- [Successfully completed Z Performance - z/OS I/O Performance and Capacity Planning z/OS 2.5.](#)
- [Successfully completed Z Performance - z/OS Workload Manager z/OS 2.5.](#)
- [Successfully earned IBM Z System Automation – Automation Administrator - Experienced badge.](#)
- [Successfully earned IBM Z System Automation - Integration by System Programmer badge.](#)
- [Successfully earned Mainframe Specialist - Hardware Management Console - Fundamentals badge.](#)
- [Successfully completed IBM Z Multi-Factor Authentication.](#)

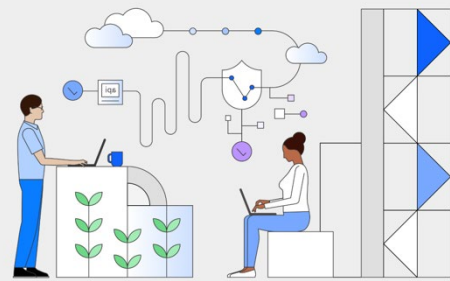
- [Successfully earned z/OS Network Security - Foundations badge.](#)
- [Successfully completed RACF – Introduction 2.5.](#)
- [Successfully completed Scaling the Sysplex on IBM Z.](#)
- [Successfully earned Mainframe Specialist - Parallel Sysplex - Foundations z/OS 2.5 badge.](#)
- [Successfully earned SMPE for z/OS Workshop badge.](#)
- [Successfully earned z/OS REXX Programming badge.](#)
- [Successfully completed "What is a root cause analysis?".](#)
- [Successfully completed Root Cause Analysis.](#)
- [Successfully completed "What is Root Cause Analysis \(RCA\)?".](#)
- [Successfully earned Mainframe Application Programmer - Db2 V13 Programming - Experienced badge.](#)
- [Successfully completed Db2 13 - Managing Db2 Operations on z/OS.](#)
- [Successfully completed IBM Db2 Analytics Accelerator for z/OS.](#)
- [Successfully completed Connect Db2 z/OS to the cloud with IBM Data Gate.](#)
- [Successfully completed IMS 15 Introduction.](#)

If eligible, you will receive a Credly badge to your email after completing the challenges above.

Explore the skills gained and available jobs

- | | |
|---|---|
| <ul style="list-style-type: none"> • IBM Z (link resides outside of ibm.com) • CICS (link resides outside of ibm.com) • REXX (link resides outside of ibm.com) • Db2 (link resides outside of ibm.com) • IMS (link resides outside of ibm.com) • TSO (link resides outside of ibm.com) • z/OS (link resides outside of ibm.com) • COBOL (link resides outside of ibm.com) • Zowe (link resides outside of ibm.com) | <ul style="list-style-type: none"> • Performance (link resides outside of ibm.com) • Hardware Management Console (HMC) (link resides outside of ibm.com) • Enterprise Software (link resides outside of ibm.com) • System Administrator (link resides outside of ibm.com) • System Automation (link resides outside of ibm.com) • Mainframe (link resides outside of ibm.com) |
|---|---|

Mainframe Skills Depot



IBM Digital Badges are reinventing how credentials are used to recognize achievement and contribution. Use digital badges to demonstrate your unique skills.

[Read the badge FAQs](#)



Mainframe Application Developer 201

Badge description

This credential earner has completed critical training designed to prepare them for the Mainframe Application Developer role. The badge earner has developed key skills in computer programming, web development, hybrid cloud computing fundamentals, and tools for development operations. This badge earner is also skilled in the maintenance and enhancement of enterprise applications.

Earning Criteria

- [Successfully completed DevOps for IBM zSystems CI/CD Enablement - Architect.](#)
- [Successfully completed Agile Metrics: Velocity is NOT the Goal.](#)
- [Earned DevOps Essential badge.](#)
- [Earned Introduction to Cloud Computing badge.](#)
- [Earned Introduction to Agile Development and Scrum badge.](#)
- [Successfully completed YouTube: Chef vs. Puppet vs. Ansible vs. Salt - What's Best for Deploying and Managing OpenStack.](#)
- [Successfully completed Travis CI Tutorial.](#)
- [Earned Mainframe Application Programmer – Programming Tools – z/OS Connect – Experienced 3.0 badge.](#)
- [Earned Linux Commands & Shell Scripting Essentials V2 badge.](#)
- [Earned Git and GitHub Essentials badge.](#)
- [Earned Python for Data Science and AI badge.](#)
- [Earned Python Project for AI and Application Development badge.](#)
- [Earned Containers & Kubernetes Essentials badge.](#)
- [Earned Application Development using Microservices and Serverless badge.](#)
- [Earned Introduction to Test Driven Development badge.](#)
- [Earned Continuous Integration & Continuous Delivery \(CI/CD\) badge.](#)
- [Earned Security for Professionals and DevOps Professionals badge.](#)
- [Earned Monitoring and Observability for Development and DevOps badge.](#)
- [Earned DevOps Capstone badge.](#)
- [Earned Data Analytics Essentials badge.](#)

- [Successfully completed IBM Data Privacy for Information Architecture.](#)
- [Earned Software Engineering Essentials badge.](#)
- [Earned Web Development with HTML, CSS, JavaScript Essentials badge.](#)
- [Earned JavaScript Programming Essentials badge.](#)
- [Successfully completed Building an API Bridge to Your IBM z Systems Applications and Data.](#)
- [Earned Front-end Development with React badge.](#)
- [Earned Node and Express Essentials badge.](#)
- [Successfully completed A quick introduction to clean architecture.](#)
- [Successfully completed Banking Technical Debt Cloud Innovation.](#)
- [Successfully completed How to Pay Back Technical Debt.](#)
- [Successfully completed 7 Simple but Effective Steps to Reduce Technical Debt.](#)
- [Successfully completed How to Reduce Technical Debt.](#)
- [Earned COBOL Programming with VSCode badge.](#)
- [Earned IBM Mainframe Application Programmer - Java™ on z/OS - Experienced badge.](#)
- [Earned IBM Mainframe Application Programmer – Java for COBOL Programmers - Experienced badge.](#)
- [Successfully completed Feature Toggles.](#)
- [Successfully completed What are Feature Flags?](#)
- [Successfully completed Introduction to Open Source.](#)
- [Successfully completed z/OS Introduction: An IBM Redbooks course.](#)
- [Earned IBM Z Resiliency badge.](#)
- [Earned TCP/IP on z/OS Essentials - Level 1 badge.](#)
- [Earned Mainframe Specialist - Db2 V13 Operations badge.](#)
- [Successfully completed IMS 15 Introduction.](#)
- [Successfully completed IBM CICS Video Course Series.](#)
- [Successfully completed CICS TS: CICS Transaction Server Introduction 5.6.](#)
- [Successfully completed CICS TS: CICS Command Simulation 5.6.](#)
- [Earned Modernize Applications with IBM CICS badge.](#)

If eligible, you will receive a Credly badge to your email after completing the challenges above.

Explore the skills gained and available jobs

- | | |
|--|--|
| <ul style="list-style-type: none"> • IBM Z (link resides outside of ibm.com) • CICS (link resides outside of ibm.com) • Ansible (link resides outside of ibm.com) • Java (link resides outside of ibm.com) • IMS (link resides outside of ibm.com) • TSO (link resides outside of ibm.com) • z/OS (link resides outside of ibm.com) • Python (link resides outside of ibm.com) • Zowe (link resides outside of ibm.com) | <ul style="list-style-type: none"> • HTML/CSS (link resides outside of ibm.com) • OpenShift (link resides outside of ibm.com) • Docker (link resides outside of ibm.com) • Node.js (link resides outside of ibm.com) • Big Data (link resides outside of ibm.com) • Git Hub (link resides outside of ibm.com) • Software Engineering (link resides outside of ibm.com) • Mainframe (link resides outside of ibm.com) |
|--|--|

More information

First point of contact

The IBM Z Academic Initiative is available to answer questions related to the program.

[Contact us](#)

Credly support

Contact Credly support for questions related to your Credly badge earner account and profile, as well as issues related to claiming your badge after receiving a notification.

[Contact Credly](#)

About the Badge Program

Contact us for general inquiries related to the IBM Digital Badge Program or explore the FAQs.

[Explore the FAQs](#)

Privacy statement

NOTICE: IBM leverages the services of Credly, a 3rd party data processor authorized by IBM and located in the United States, to assist in the administration of the IBM Digital Badge program. In order to issue you an IBM Digital Badge, your personal information (name, email address, and badge earned) will be shared with Credly. You will receive an email notification from Credly with instructions for claiming the badge. Your personal information is used to issue your badge and for program reporting and operational purposes. IBM may share the personal information collected with IBM subsidiaries and third parties globally. It will be handled in a manner consistent with IBM privacy practices. The IBM Privacy Statement can be viewed here: <https://www.ibm.com/privacy/us/en/>. IBM employees can view the IBM Internal Privacy Statement here: <https://w3.ibm.com/w3publisher/w3-privacy-notice>.



(C)Copyright IBM Corporation 2024
IBM Corporation
New Orchard Road Armonk, NY 10504 U.S.A.
06/24

IBM, ibm.com, the IBM logo, IBM Z, Ansible, CICS, Db2, DFSMS, IMS, REXX, z16 and z/OS are trademarks or registered trademarks of the International Business Machines Corporation.

A current list of IBM trademarks is available on the Web at <https://www.ibm.com/legal/us/en/copytrade.shtml>, and select third party trademarks that might be referenced in this document is available at https://www.ibm.com/legal/us/en/copytrade.shtml#section_4.

Adobe, the Adobe logo, PostScript, and the PostScript logo are either registered trademarks or trademarks of Adobe Systems Incorporated in the United States, and/or other countries.

Cell Broadband Engine is a trademark of Sony Computer Entertainment, Inc. in the United States, other countries, or both and is used under license therefrom. InfiniBand and InfiniBand Trade Association are registered trademarks of the InfiniBand Trade Association.

Intel, Intel logo, Intel Inside, Intel Inside logo, Intel Centrino, Intel Centrino logo, Celeron, Intel Xeon, Intel SpeedStep, Itanium, and Pentium are trademarks or registered trademarks of Intel Corporation or its subsidiaries in the United States and other countries.

Java and all Java-based trademarks and logos are trademarks or registered trademarks of Oracle and/or its affiliates.

The registered trademark Linux® is used pursuant to a sublicense from the Linux Foundation, the exclusive licensee of Linus Torvalds, owner of the mark on a worldwide basis.

Microsoft, Windows, Windows NT, and the Windows logo are trademarks of Microsoft Corporation in the United States, other countries, or both.

OpenStack is a trademark of OpenStack LLC. The OpenStack trademark policy is available on the OpenStack website.

Red Hat®, JBoss®, OpenShift®, Fedora®, Hibernate®, Ansible®, CloudForms®, RHCA®, RHCE®, RHCSA®, Ceph®, and Gluster® are trademarks or registered trademarks of Red Hat, Inc. or its subsidiaries in the United States and other countries.

RStudio®, the RStudio logo and Shiny® are registered trademarks of RStudio, Inc. TEALEAF is a registered trademark of Tealeaf, an IBM Company.

UNIX is a registered trademark of The Open Group in the United States and other countries. Worklight is a trademark or registered trademark of Worklight, an IBM Company.

Zowe™, the Zowe™ logo and the Open Mainframe Project™ are trademarks of The Linux Foundation.

All statements regarding IBM's future direction and intent are subject to change or withdrawal without notice, and represent goals and objectives only.

This document is current as of the initial date of publication and may be changed by IBM at any time. Not all offerings are available in every country in which IBM operates. The performance data discussed herein is presented as derived under specific operating conditions. Actual results may vary.

THE INFORMATION IN THE DOCUMENT IS PROVIDED "AS IS" WITHOUT ANY WARRANTY, EXPRESS OR IMPLIED, INCLUDING WITHOUT ANY WARRANTIES OF MERCHANTABILITY, FITNESS FOR A PARTICULAR PURPOSE AND ANY WARRANTY OR CONDITION ON NON-INFRINGEMENT. IBM products are warranted according to the terms and conditions of the agreements under which they are provided.