

Data integration made easier with IBM Planning Analytics

Extracting data from multiple data sources to speed and simplify your planning

Highlights

- Enables users to populate applications with data from all sources.
 - Performs automated high-speed data extraction on cloud or on-prem.
 - Offers an intuitive interface designed for business users.
 - Supports continuous planning and reporting cycles.
-

Performance gains through data integration

Integrating financial data from disparate sources can be a critical factor in a company's ability to successfully manage its business. Yet many organizations find that extracting almost any data from these sources can be slow and cumbersome. Users need to be able to extract data quickly, in a repeatable process that eliminates the need to start over again in the next planning or reporting cycle. IBM Planning Analytics, in both its on-cloud and on-premises versions, eliminates the need for manual data extraction processes with a high-performance, easy-to-use alternative.

Connecting the “data islands”

Proprietary applications for performance management (PM) and business intelligence (BI) have transitioned from being data end-points to key sources of information. The need to extract that information from these varied systems for loading into centralized repositories has grown to be a business imperative.

The various sources can become “data islands,” with users forced to constantly compare spreadsheets to confirm that the information is correct. Custom interfaces are too unstable to reliably extract data and metadata for reporting purposes. IT requires the rigidity of a relational system while finance users need their cubes. To address these diverse requirements, a high-performance solution, which also offers ease of use, is needed to share financial data and extend rather than replace existing software investments.

IBM Planning Analytics incorporates a fast, reliable tool for sourcing specialized “cube” data from financial, sales and operational applications from a variety of data sources, including IBM TM1, Oracle Hyperion applications and SAP Business Warehouse (BW). It can extract content including data and metadata (and security profiles in the case of Hyperion applications) and move this content into IBM Planning Analytics for use with performance management applications. With IBM Planning Analytics, you reduce the need for custom integrations that typically introduce compliance risks and place a burden on scarce technical resources.

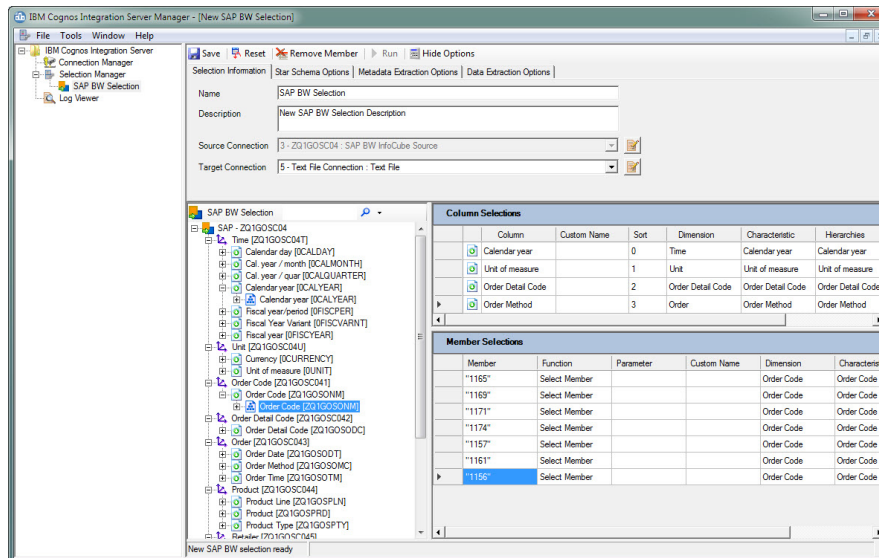


Figure 1: An intuitive user interface makes it easy to select subsets of data for extraction.

Key benefits

Provides high-performance data extraction

Users can choose full or partial data extractions; select entire dimensions or virtually any member intersection to create custom data subsets for export. Data extraction can be reduced from days or hours to only minutes, using the Intelligent Extraction feature, and a continuous planning cycle with rapid data updates can be effectively implemented.

Bridges the needs of IT and finance

With an interface designed for business users, IBM Planning Analytics provides a common ground for meeting the diverse needs of IT and Finance. IT can enjoy access to data in an open and standard format while finance users can continue to leverage the cube technology that suits their business requirements.

Balances hierarchies for planning and reporting

With its patented ability to balance “ragged” hierarchies for data and metadata from Oracle Hyperion sources, the Cognos Integration Server component of IBM Planning Analytics* ensures that important hierarchies and drill paths that reflect the business are preserved in the target RDBMS applications and text file targets.

Provides 24/7 availability

Data extractions can be performed on a continuous basis to update external reporting applications and for backup purposes, all while remaining online for finance users.

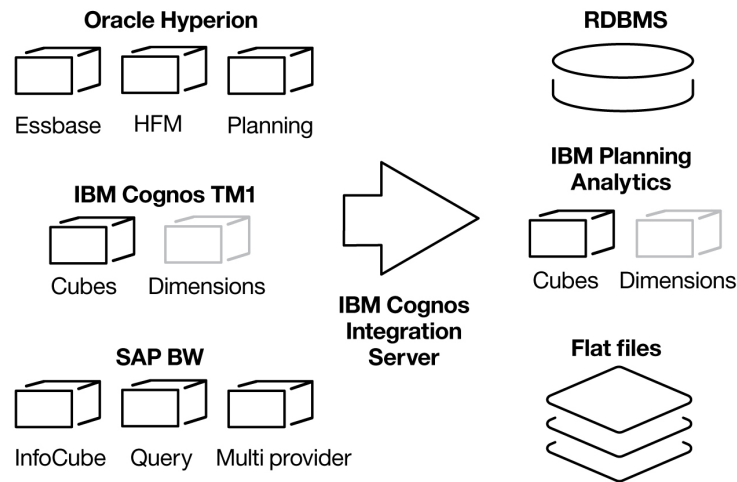


Figure 2: Patented technology rapidly extracts large volumes of content for loading into IBM Planning Analytics, IBM TM1 and other applications, where the data can be made available for query and reporting.

Supports single-source reporting strategies

For organizations with a single-source reporting strategy, IBM Planning Analytics extracts and unifies value-added information locked in proprietary applications like Oracle Essbase, Oracle Hyperion Planning, Oracle Hyperion Financial Management and SAP BW. These “data generating” applications are often gateways for user input. They can model complex business functions, generating valuable content for use downstream in a central reporting system.

Delivers rapid ROI

Unifying information across the organization’s portfolio of financial analysis applications can lower total lifecycle costs and improve the return on investment (ROI) of your existing software. When used in conjunction with Cognos Command Center, data extractions can be automated and chained together with other application processes. You gain a clear overview of who ran what, when, where and how — improving financial control and reducing ongoing maintenance.

Key features

- Data extractions are easy to build and maintain over time for loading into IBM Planning Analytics, IBM TM1, IBM DB2 and other relational database management systems (RDBMS).
- Interface designed for business users in on-cloud or on-premises versions.
- Faster and more reliable performance data extraction for loading into IBM Planning Analytics applications or BI warehouses.
 - Extracts data and metadata (dimensions) from IBM Planning Analytics and IBM TM1, as well as from SAP BW InfoCubes, InfoQueries and multi-provider InfoCubes (using BAPI or MDX).
 - Extracts Oracle Essbase data, metadata and security profiles.
 - Extracts Oracle Hyperion Planning data, metadata, line-item details and security profiles.
 - Extracts Oracle Hyperion Financial Management data, metadata, line-item details and journal entries.
 - Loads content directly into IBM Planning Analytics, IBM TM1, IBM DB2, Microsoft SQL Server and Oracle.

- Preserves important hierarchies and drill paths that reflect the business in the target relational reporting application.
- Supports large Essbase dimensional data extraction, exceeding the 264 power potential combination barrier.
- In combination with Cognos Command Center, extractions can be automated and chained together with IBM TM1 TurboIntegrator and other application processes.

Data: It's only valuable when you can use it

No matter how valuable your data may be in theory, it only delivers its full business benefits when it can be accessed quickly and easily. And since virtually all large organizations store data in a variety of systems and formats, IBM Planning Analytics streamlines access to your data, whether it's in Oracle, SAP, IBM TM1, or a variety of other sources, eliminating the need for time-consuming manual data extraction. With IBM Planning Analytics, your finance team can spend less time collecting data and more time on analysis, delivering real value to your organization.

About IBM Analytics

IBM Analytics software delivers data-driven insights that help organizations work smarter and outperform their peers. This comprehensive portfolio includes solutions for business intelligence, predictive analytics and decision management, performance management, and risk management.

IBM Analytics solutions enable companies to identify and visualize trends and patterns in areas, such as customer analytics, that can have a profound effect on business performance. They can compare scenarios, anticipate potential threats and opportunities, better plan, budget and forecast resources, balance risks against expected returns and work to meet regulatory requirements. By making analytics widely available, organizations can align tactical and strategic decision-making to achieve business goals. For further information please visit ibm.com/analytics

Request a call

To request a call or to ask a question, go to ibm.com/analytics/contactus. An IBM representative will respond to your inquiry within two business days.

**For IBM Planning Analytics on premises, Cognos Integration Server must be purchased separately.*

IBM Cognos Integration Server integrates and automates your data extraction

Seamlessly integrated within IBM Planning Analytics, IBM Cognos® Integration Server is the tool that enables users to easily leverage existing data and content from source applications such as IBM TM1, Oracle Hyperion cubes and SAP BW for use in IBM Planning Analytics cubes. Cognos Integration Server streamlines the process and supports single-source reporting strategies where needed.

Why IBM?

IBM Analytics solutions enable companies to identify and visualize trends and patterns in areas, such as customer analytics, that can have a profound effect on business performance. They can compare scenarios, anticipate potential threats and opportunities, better plan, budget and forecast resources, balance risks against expected returns and work to meet regulatory requirements. By making analytics widely available, organizations can align tactical and strategic decision-making to achieve business goals. For further information please visit: ibm.com/analytics

For more information

To learn more about the capabilities of IBM Planning Analytics, visit: <https://www.ibm.com/products/planning-analytics>.

To request a call or to ask a question, go to ibm.com/analytics/contactus. An IBM representative will respond to your inquiry within two business days.



© Copyright IBM Corporation 2018.

IBM, the IBM logo, and [ibm.com](https://www.ibm.com) are trademarks of International Business Machines Corp., registered in many jurisdictions worldwide. Other product and service names might be trademarks of IBM or other companies. A current list of IBM trademarks is available on the Web at <https://www.ibm.com/legal/us/en/copytrade.shtml>, and select third party trademarks that might be referenced in this document is available at https://www.ibm.com/legal/us/en/copytrade.shtml#section_4.

This document contains information pertaining to the following IBM products which are trademarks and/or registered trademarks of IBM Corporation:
IBM®, IBM TM1®, IBM DB2®, IBM Cognos®

Microsoft, Windows, Windows NT, and the Windows logo are trademarks of Microsoft Corporation in the United States, other countries, or both.

All statements regarding IBM's future direction and intent are subject to change or withdrawal without notice, and represent goals and objectives only.
