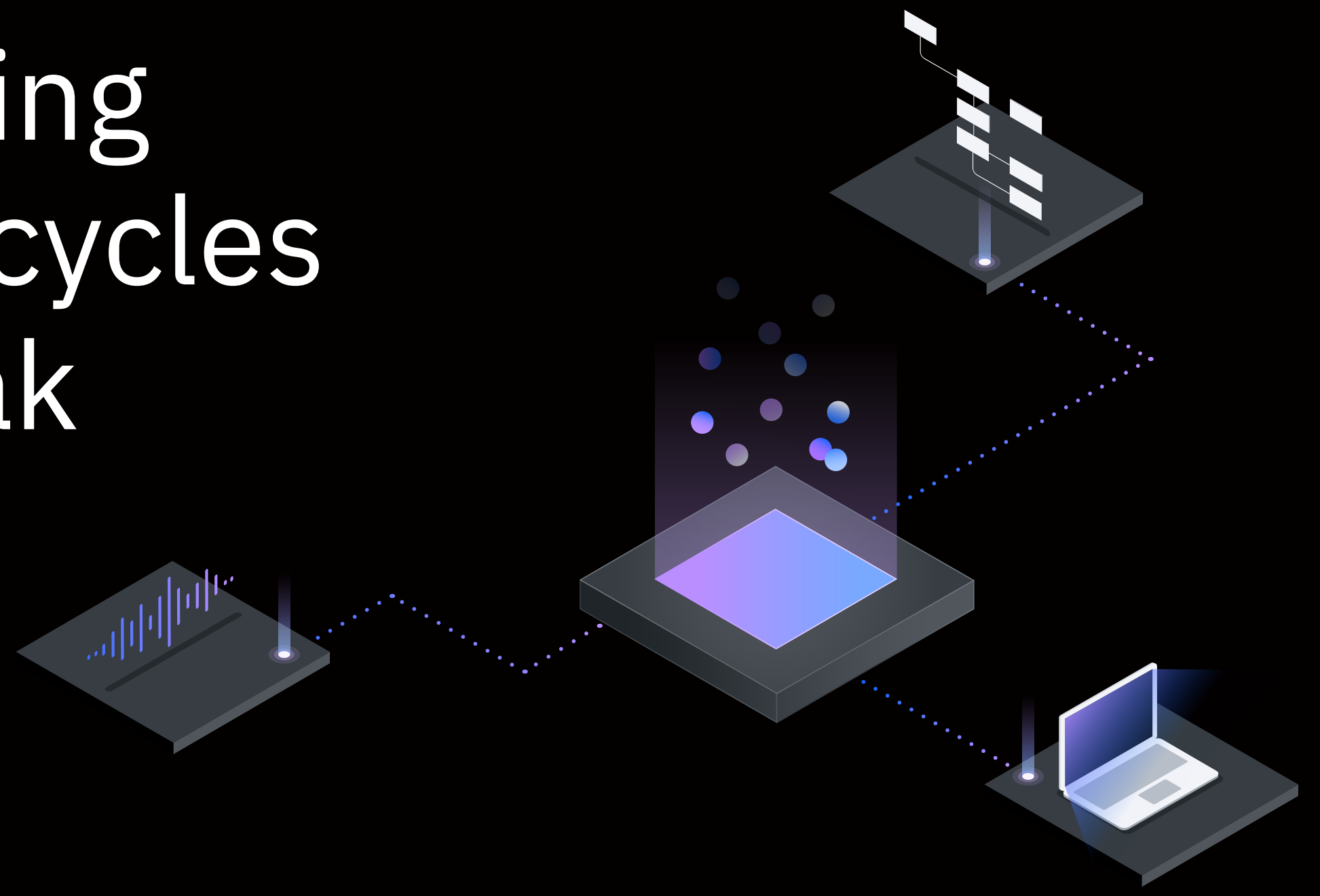


# Get faster planning and forecasting cycles on IBM Cloud Pak for Data



Experience the power of IBM® Planning Analytics powered by TM1®:

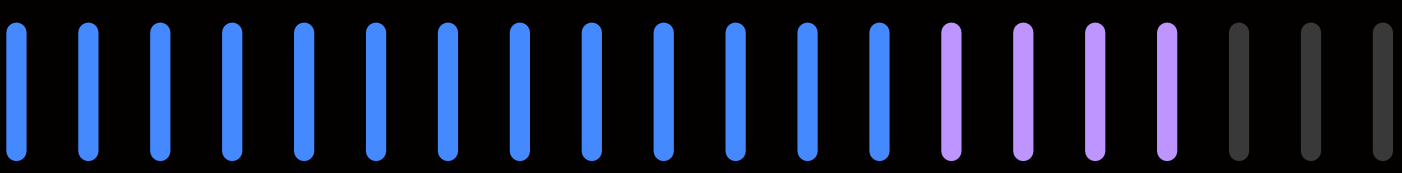
**63%**  
Time saved in completing annual budgeting cycles<sup>1</sup>

**80%**  
Faster planning system processing<sup>1</sup>

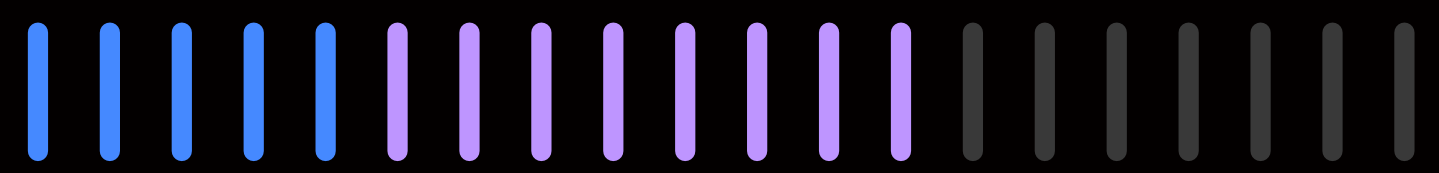
**70%**  
Time saved in completing forecasts<sup>1</sup>

Experience the power of IBM® Cloud Pak™ for Data:

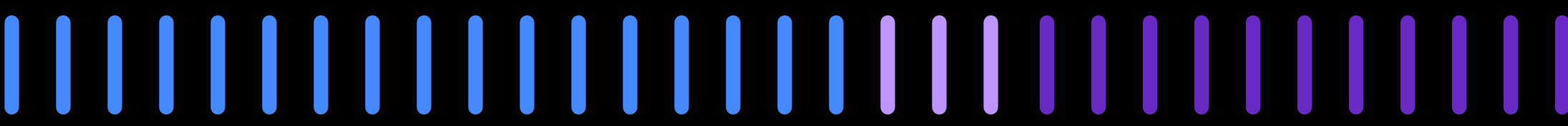
\*Projected results



**65%–85%**  
Reduced infrastructure management effort<sup>2</sup>



**25%–65%**  
Reduced ETL (extract, transform, load) requests<sup>2</sup>



**86%–156%**  
Return on investment<sup>2</sup>

## Benefits of Planning Analytics on Cloud Pak for Data:

### Collaborate across the organization

Break down siloes, unify data and synchronize planning across the organization, from finance to operations, to create more accurate, integrated plans.

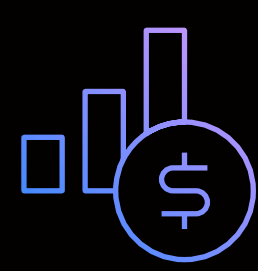
### Plan with agility

Easily adjust plans and forecasts in real time to anticipate or adapt to changing business strategies or internal and external conditions.

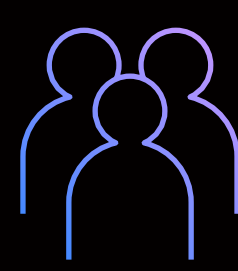
### Accelerate deployment

Easily deploy in hours (not days), across any cloud or multicloud environment such as Amazon Web Services (AWS), Azure, Google Cloud, IBM Cloud® and private clouds.

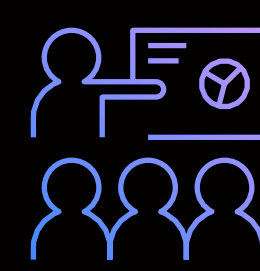
## Use cases:



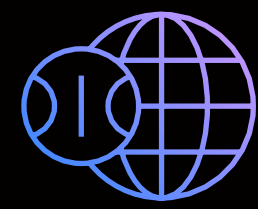
Financial planning and analysis



Marketing planning



Sales forecasting and planning



Supply chain planning



Workforce planning



IT budgeting and project planning

With Planning Analytics on [IBM Cloud Pak for Data](#) you have a single, integrated planning solution where your organization can bring data together and operationalize AI to forecast for a better future.

Start your journey to AI today.

[Try the no-cost Cloud Pak for Data trial](#)

[Learn more about Planning Analytics](#)

© Copyright IBM Corporation 2020. IBM, the IBM logo, ibm.com, CPLEX and ILOG are trademarks of International Business Machines Corp., registered in many jurisdictions worldwide. Other product and service names might be trademarks of IBM or other companies. A current list of IBM trademarks is available on the Web at "Copyright and trademark information" at [www.ibm.com/legal/copytrade](http://www.ibm.com/legal/copytrade).

<sup>1</sup> "The Total Economic Impact™ Of IBM Planning Analytics," a commissioned study conducted by Forrester Consulting, October 2019. Full Study: [ibm.com/account/reg/us-en/login?formid=urx-41187](http://ibm.com/account/reg/us-en/login?formid=urx-41187)

<sup>2</sup> "New Technology: The Projected Total Economic Impact™ Of IBM Cloud Pak For Data," a commissioned study conducted by Forrester Consulting, February 2020. Full study: [ibm.com/account/reg/us-en/signup?formid=urx-43258](http://ibm.com/account/reg/us-en/signup?formid=urx-43258)