

IBM® ECM Sidebar for Notes

Direct access to ECM repositories from HCL Notes.



Highlights

Direct access to ECM repositories from HCL Notes.

Supports Browse, Search and Favorites.

Add emails and attachments to your ECM repositories.

Send links to or copies of ECM documents by email.

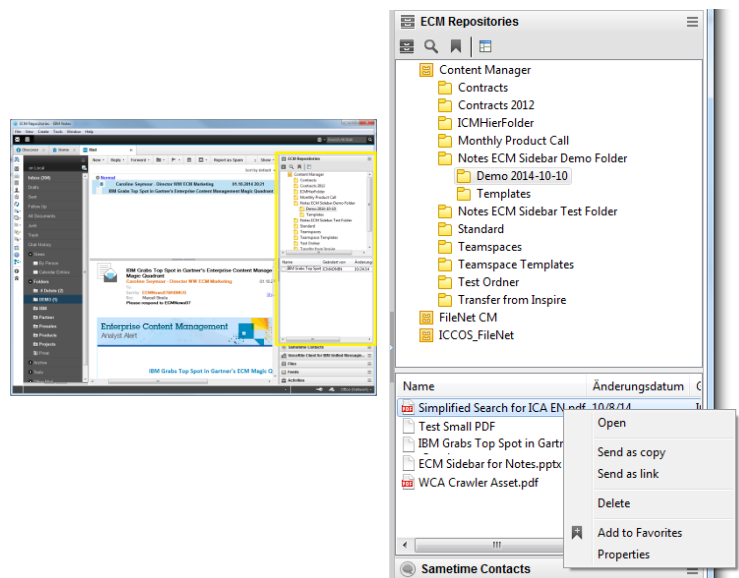
Service Offering

Support for Installation and Configuration

Users can access Enterprise Content Management features without leaving *HCL Notes*.

Solution Description

Sidebar for Notes simplifies the interaction with IBM ECM repositories from *HCL Notes*.



The users can browse and search in their ECM repositories. They can also seamlessly work with the favorites they have defined on their *IBM Content Navigator* desktop.

The users can add or move a particular amount of emails to the ECM repositories using simple drag and drop operations. Furthermore, they can copy attachments to the ECM repositories. With this features the users are able to both reduce the size of their Notes databases and can easily share relevant informations with multiple people.



To support collaboration the users can simply send a link to any ECM document or even to a complete ECM folder by email. The recipients can open these linked items in the *IBM Content Navigator* application. Provided functions may be different between *HCL Notes ECM Sidebar* and *IBM Content Navigator*.

For recipients that do not have access to *IBM Content Navigator* the users can simply send a copy of the ECM document by email. This option can be disabled by central configuration.

Technical Information

The *IBM ECM Sidebar for Notes* is implemented as a plug-in for the Eclipse based Notes Client, thus it requires the HCL Notes Rich Client on the user desktops.

Supported Versions

Current tested

IBM FileNet P8 (versions related to *ICN* Office integration)

- HCL Notes 8.5 and above

Die *IBM ECM Sidebar for Notes* uses the *IBM Content Navigator* standard office integration APIs and requests a central *IBM Content Navigator* installation. Several *IBM Content Navigator* standard office integration configuration parameter will be considered for *IBM ECM Sidebar for Notes*.

- IBM Content Navigator 2.0.2 and above

For support of non-listed versions please contact the Germany Asset Support Center of the ECM Software Services team, reachable via email: gerasc@de.ibm.com

Service Offering

- Optional support for Installation and Configuration of *the IBM ECM Sidebar for Notes* is available

Use cases

- Access Enterprise Content Management features, such as storage and display, without leaving *HCL Notes*.
- Supports collaboration to send ECM documents or links.
- Reduce mail file size and comply with retention requirements by moving emails to the ECM repositories.



IBM Deutschland GmbH
IBM-Allee 1
71139 Ehningen
ibm.com/de

IBM Homepage is reachable below:
ibm.com

IBM, the IBM logo and ibm.com are trademarks of International Business Machines Corporation in the United States, other countries or both. If these and other IBM trademarked terms are marked on their first occurrence in this information with a trademark symbol (® or ™), these symbols indicate U.S. registered or common law trademarks owned by IBM at the time this information was published. Such trademarks may also be registered or common law trademarks in other countries. A current list of IBM trademarks is available on the web at "Copyright and trademark information" at ibm.com/legal/copytrade.shtml

Other company, product or service names may be trademarks or servicemarks of others.

© Copyright IBM Corporation 2020
