



Whether it's stored in the cloud, the data center or a hybrid environment — all of your data deserves

IDENTICAL PROTECTION

► Your encryption capabilities should be the same, too. ◀

Data is critical to business.



On-premises Cloud Hybrid

Apply encryption tools EVERYWHERE.

Make data useless to thieves and criminals.

Data is subject to regulation.



On-premises Cloud Hybrid

Be CONSISTENT.

Encrypt personal information and business data to comply with mandates and best practices.

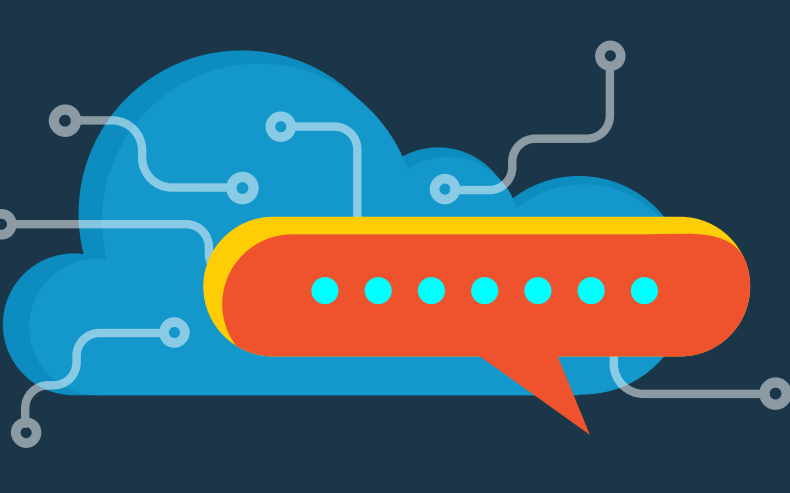
Data needs protection.



On-premises Cloud Hybrid

Encryption is DEFENSE.

Use encryption to keep data secure even when attackers slip behind your defenses.



Encryption is KEY.

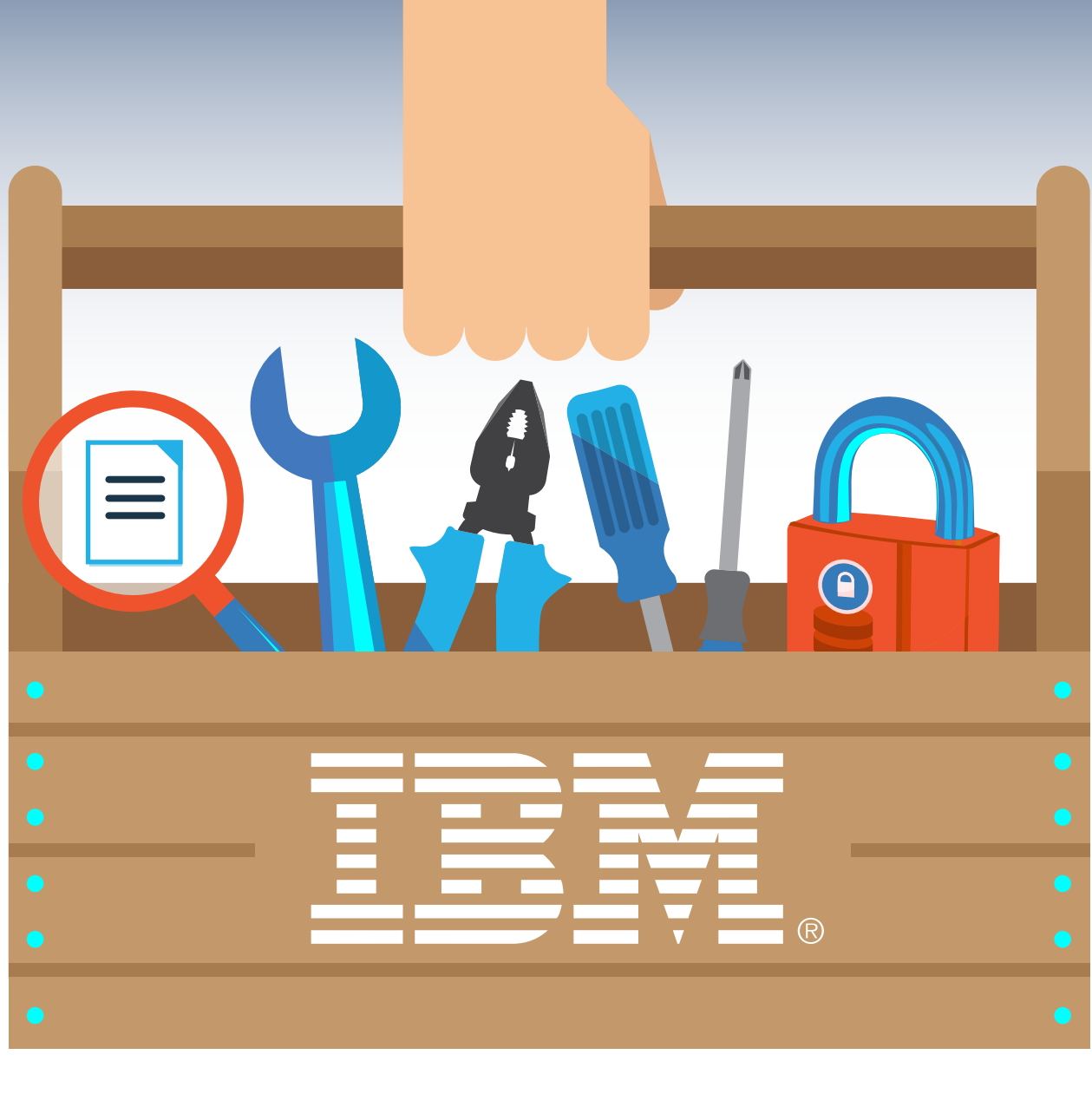
Encryption can permanently deny data access — more cleanly and thoroughly than deletion. Just encrypt your data, tie it to a managed encryption key and then destroy the key. Any route to the data will be destroyed with it.






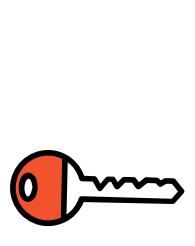



Encryption is RISK MITIGATION.

Encryption with key management provides an intelligent and actionable risk mitigation strategy for sensitive and business-critical data by making this data useless to external actors, unauthorized insiders, and cloud service providers.

Do you have the tools for all that?



IBM encryption protects your valuable information wherever it resides.

-  **IBM® Guardium® for Database and File Encryption**
-  **IBM Guardium Data Encryption for Db2® and IMS™ Databases**
-  **IBM Guardium for Application Encryption**
-  **IBM Multi-Cloud Data Encryption**
-  **IBM Guardium for Tokenization**
-  **IBM Security Key Lifecycle Manager**
-  **IBM Guardium for Teradata Encryption**

LEARN MORE Guard your organization's data with intelligent IBM encryption.

WATCH Learn how unified data encryption can reduce the risk of data breaches.

LISTEN Learn what you need to know about encryption right now.



© Copyright IBM Corporation 2018. All Rights Reserved. IBM, the IBM logo, ibm.com, Db2, Guardium, and IMS are trademarks or registered trademarks of International Business Machines Corporation in the United States.