



---

### Highlights:

IBM Cúram Business Intelligence and Analytics delivers contextually relevant embedded reports accessible throughout the solution, pre-packaged domain specific reports and a reporting architecture.

---

## IBM Cúram Business Intelligence and Analytics

IBM Cúram Business Intelligence and Analytics is an industry-leading Business Intelligence solution providing robust enterprise reporting capabilities for Social Program Management agencies. IBM Cúram Business Intelligence and Analytics is designed with flexibility, which enables agencies to use preferred reporting tool of choice (for example, Actuate, IBM Cognos® Business Intelligence Suite, Crystal Reports® and various other products including open-source products). IBM Cúram Business Intelligence and Analytics offers a fully configurable BI solution scalable from program to enterprise consisting of embedded analytics, domain-specific dash boards, Extract, Transform and Load (ETL) framework and tool independent predefined domain-specific data marts. IBM Cúram Business Intelligence and Analytics provides the foundation for the production of standard and ad hoc reports, trend analysis, and tracking of key performance indicators in support of effective benefit and service delivery for citizens.

The IBM Cúram Business Intelligence and Analytics offering includes:

- Embedded analytics using Eclipse™ BIRT (Business Intelligence and Reporting Tools) open source
- Domain-specific BI content including Dashboards, KPIs, Personalized Reports using Eclipse BIRT that can be enhanced with Actuate
- Tool independent pre-defined domain-specific data marts
- Extract, Transform and Load (ETL) process definitions
- Cúram Reference Model™ that is both relational and dimensional and is optimized to support the reporting needs of agencies using the Cúram Business Application Suite™

### Embedded reports

The IBM Cúram Social Program Management provides embedded reports which are part of the many user homepages. Eclipse BIRT was used to provide the development and execution environments for this BI content. Using this technology:

- Embedded BI content is displayed as part of a standard IBM Cúram page
- Drill-down capability is provided from the embedded BI content to underlying content



- Data for all the embedded BI content is provided from Online Transaction Processing (OLTP) database
- Eclipse BIRT designer is provided as part of the IBM Curam Social Program Management to enable agencies to edit or add new BI content

**Domain-specific BI content**

IBM Cúram Business Intelligence and Analytics provides domain- specific BI content including dash boards, KPIs, Regulatory/Compliance reports and Personalized Outcome reports.

All this content is based on Eclipse BIRT. In addition to this, Cúram also provides similar content based on IBM Cognos Business Intelligence Suite.

**Enhanced user experience with Actuate**

Based on Eclipse BIRT, both the embedded and domain-specific BI content can be significantly enhanced using Actuate. Some of the enhancements include:

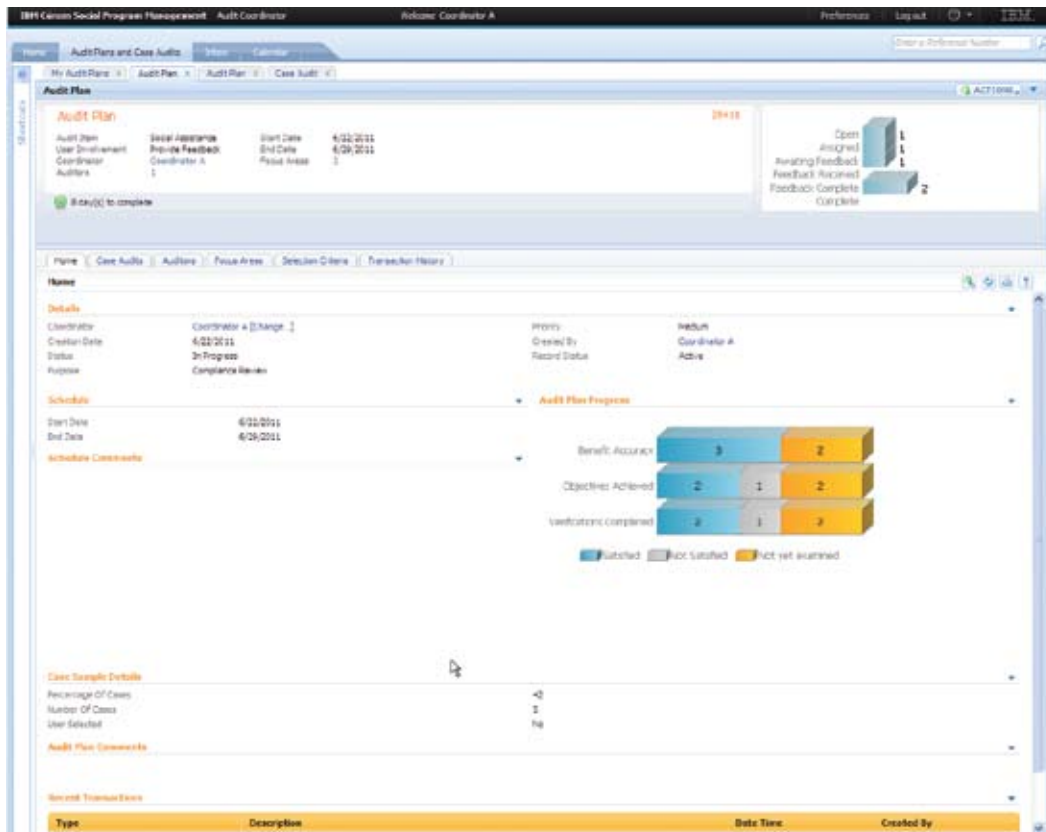
- Ability to slice and dice data to create ad hoc reports
- Ability for users to change the reports on the fly

- Extract report data into useful formats including spreadsheets and PDF
- Routine scheduling and distribution of reports across the enterprise

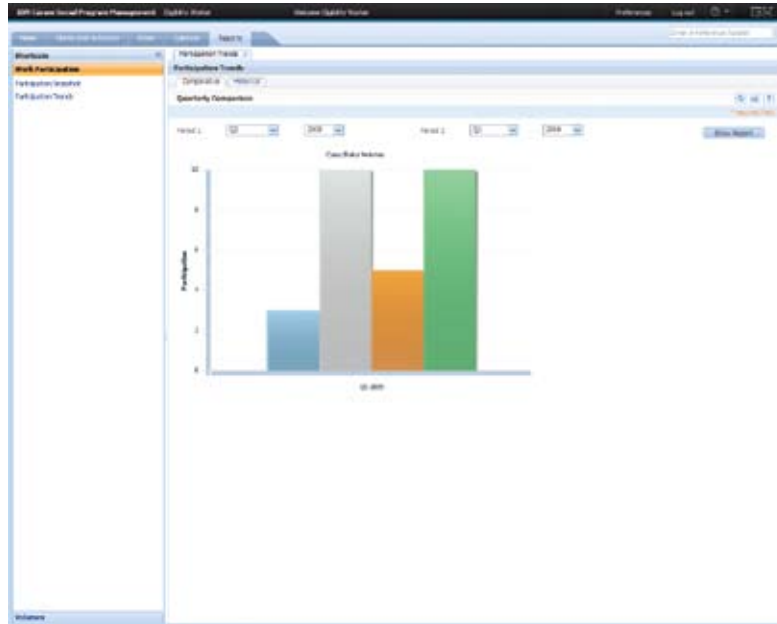
**IBM Cúram Business Intelligence and Analytics development architecture**

The development architecture outlines how to extend and maintain the IBM Cúram Business Intelligence and Analytics solution.

- The design process starts with an existing report, a sample report, or stated requirements, and works backwards by identifying and creating a new data model or adding to the existing Cúram Reference Model™.
- ETL processes specify how data is moved through the system from online transaction processing (OLTP) to the central data warehouse and how it is used to produce the actual reports.
- The implementation process uses the tools to create the physical tables and provide the definition of how the data is moved and transformed at each step.



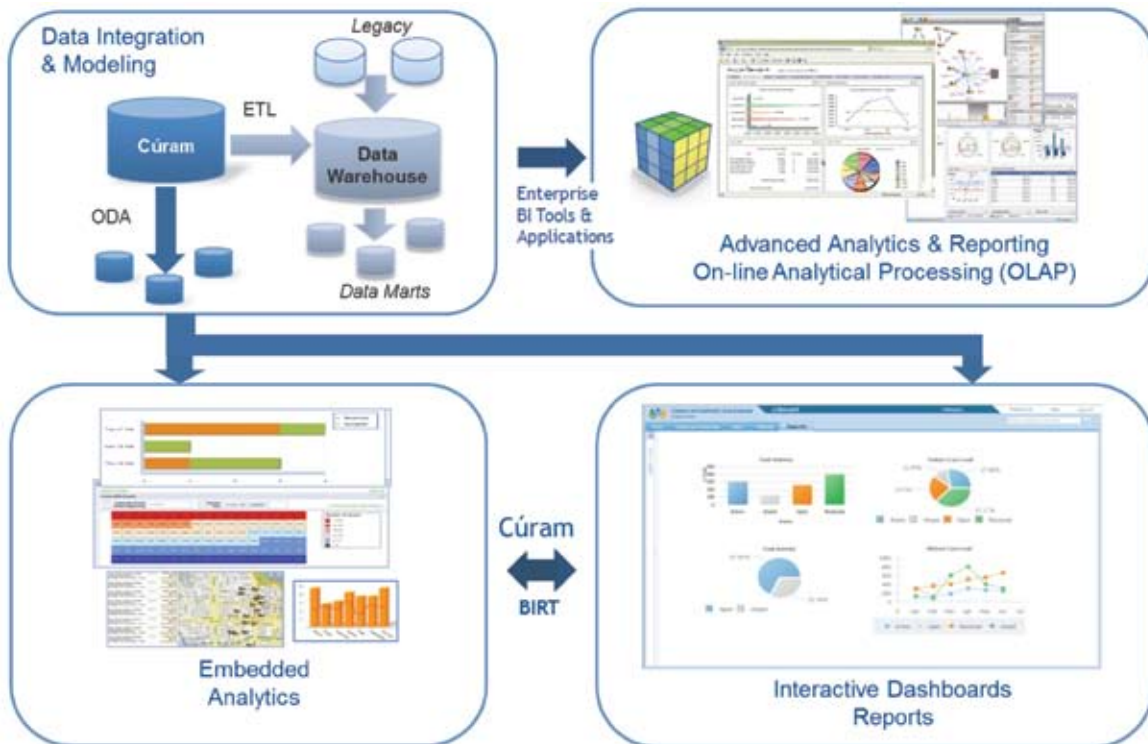
IBM Cúram Business Intelligence and Analytics provides domain-specific BI content including dash boards, KPIs, Regulatory/Compliance reports and Personalized Outcome reports.



**Conclusion**

The IBM Cúram Business Intelligence and Analytics solution uses data from both the IBM Cúram operational database and other data sources to be manipulated and processed for the purpose of data analysis and business intelligence. IBM Cúram

Business Intelligence and Analytics operates by extracting data from one or more sources, transforming that data, and then loading the data to a set of data marts. This data can be accessed using either IBM Cúram domain-specific BI content (if licensed) or using a business reporting tool of choice to create new reports.





---

© Copyright IBM Corporation 2012

IBM Corporation  
Software Group  
Route 100  
Somers, NY 10589  
USA

Produced in the United States of America  
June 2012

IBM, the IBM logo and [ibm.com](http://ibm.com) are trademarks of International Business Machines Corporation in the United States, other countries or both. If these and other IBM trademarked terms are marked on their first occurrence in this information with a trademark symbol (® or TM), these symbols indicate U.S. registered or common law trademarks owned by IBM at the time this information was published. Such trademarks may also be registered or common law trademarks in other countries. Other product, company or service names may be trademarks or service marks of others. A current list of IBM trademarks is available at “Copyright and trademark information” at: [ibm.com/legal/copytrade.shtml](http://ibm.com/legal/copytrade.shtml)

‘Eclipse’, ‘Built on Eclipse’ and ‘Eclipse Ready’, ‘BIRT’, ‘Higgins’ are trademarks of Eclipse Foundation, Inc.

The content in this document (including currency OR pricing references which exclude applicable taxes) is current as of the initial date of publication and may be changed by IBM at any time. Not all offerings are available in every country in which IBM operates.

The performance data discussed herein is presented as derived under specific operating conditions. Actual results may vary. THE INFORMATION IN THIS DOCUMENT IS PROVIDED “AS IS” WITHOUT ANY WARRANTY, EXPRESS OR IMPLIED, INCLUDING WITHOUT ANY WARRANTIES OF MERCHANTABILITY, FITNESS FOR A PARTICULAR PURPOSE AND ANY WARRANTY OR CONDITION OF NONINFRINGEMENT. IBM products are warranted according to the terms and conditions of the agreements under which they are provided.



Please Recycle