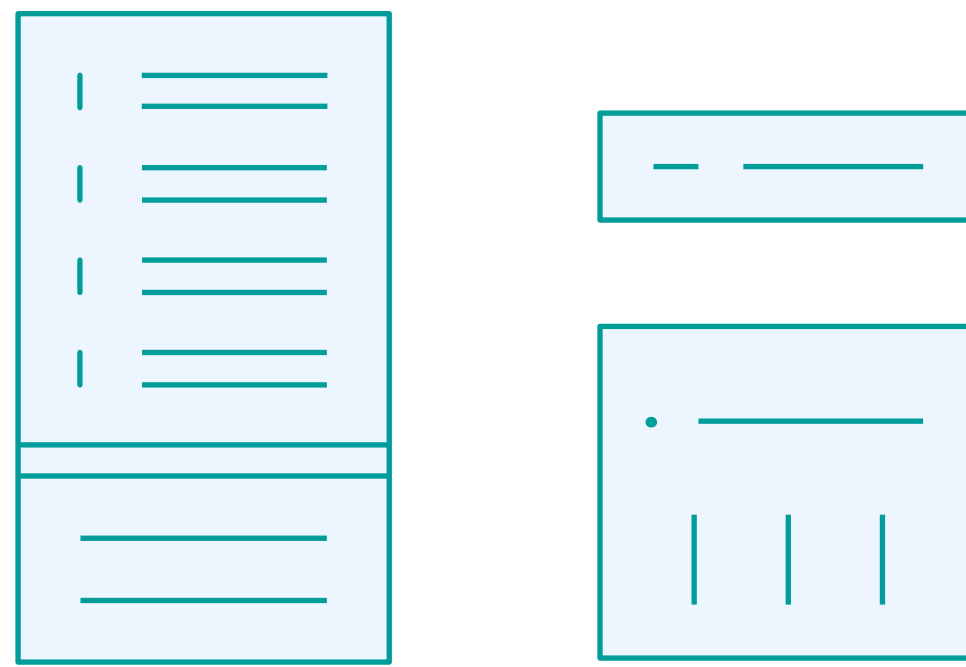


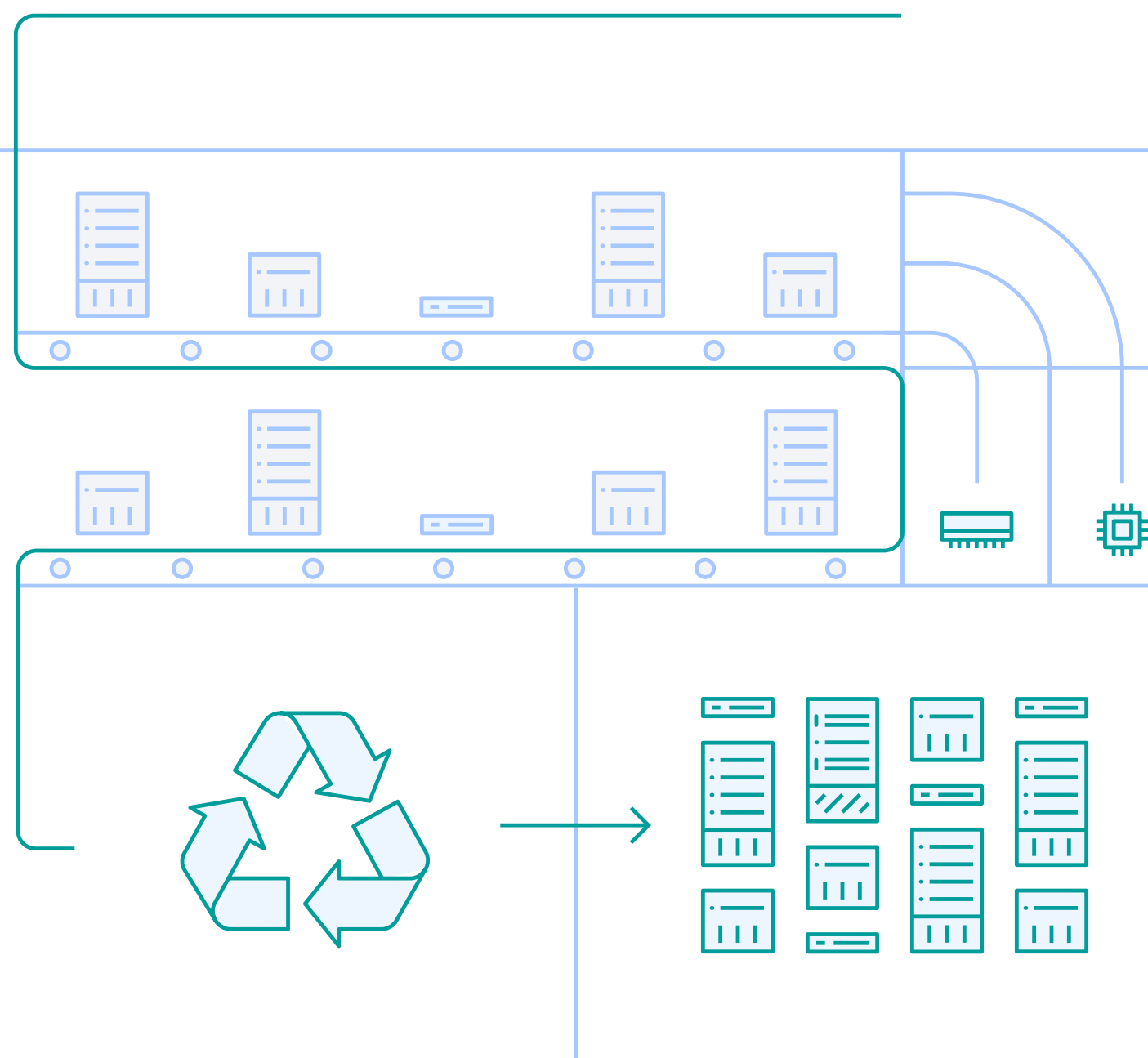
# Refurbish, Reuse, Recycle

Support your IT recycling initiatives with IBM Certified Pre-Owned



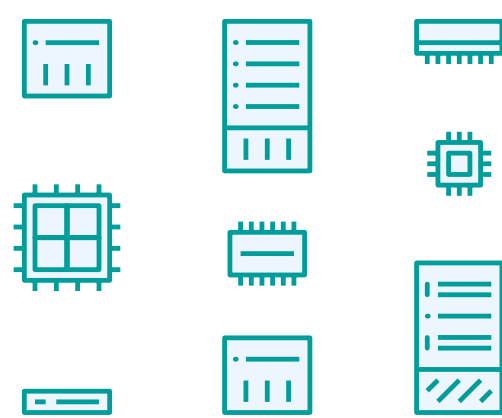
**IBM Certified Pre-Owned solutions may help businesses preserve budget while supporting their sustainability initiatives**

When off-lease IBM® assets cannot be directly reused, they are refurbished, recycled or remanufactured through rigorous processes and original manufacturing standards, and then resold as IBM Certified Pre-Owned servers, storage, parts and features.



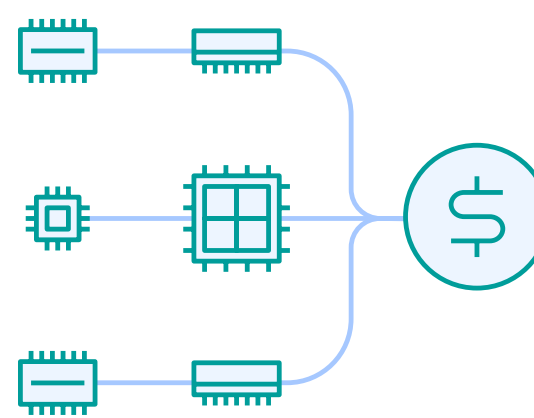
**In 2020, IBM's Global Asset Recovery Services program reported<sup>1</sup>:**

**16,900+ metric tons**



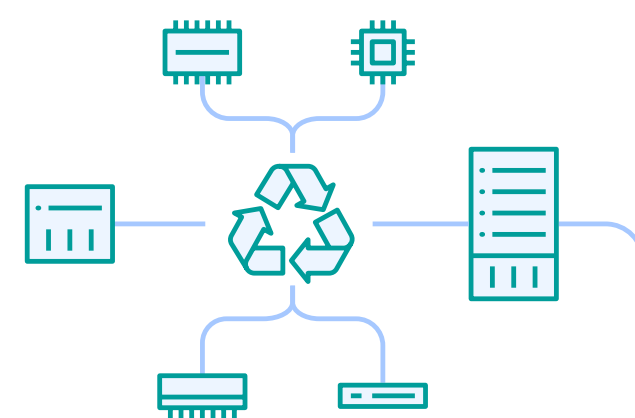
More than 16,900 metric tons (37 million pounds) of end-of-life products and product waste were processed in 2020

**96.5% of all equipment**



96.5% (by weight) of all IT equipment returned to IBM in 2020 was reused, resold or recycled while 3.0% was sent to waste-to-energy for final disposition

**1.1 million metric tons**



IBM global operations have processed 1.1 million metric tons (2.4 billion pounds) of product and product waste over the last 25 years

IBM recycling operations helps in reducing the impact of products on the environment by extending the life of existing IT equipment and reducing the need to manufacture new products. IDC research indicates that businesses want to work with partners that have a sustainability program and can demonstrate current and future investment plans to reduce waste. IBM has a strong reputation as one of the leaders in this area.<sup>2</sup>

**Accelerate your hybrid cloud and AI project with IBM refurbished IT solutions**

IBM Certified Pre-Owned IBM Z®, Power® Systems, storage, parts and features can be configured to help meet your budget requirements while offering these benefits:



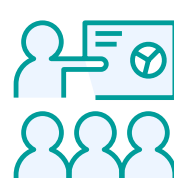
May support your environmental initiatives



Remanufactured with genuine parts



Eligible for IBM maintenance



Can be customized to meet your needs



IBM Global Financing offers flexible payment options

Explore IBM's Certified Pre-Owned inventory or [contact us](#) to discuss the configuration you need.

Shop now

© Copyright IBM Corporation 2021

IBM, the IBM logo, ibm.com are trademarks of International Business Machines Corp., registered in many jurisdictions worldwide. Other product and service names might be trademarks of IBM or other companies. A current list of IBM trademarks is available on the Web at <https://www.ibm.com/legal/us/en/copytrade.shtml>, and select third party trademarks that might be referenced in this document is available at [https://www.ibm.com/legal/us/en/copytrade.shtml#section\\_4](https://www.ibm.com/legal/us/en/copytrade.shtml#section_4).

IBM Global Financing offerings are provided through IBM subsidiaries and divisions worldwide to qualified commercial and government clients. IBM Global Financing lease and financing offerings are provided in the United States through IBM Credit LLC. Rates and availability are based on a client's credit rating, financing terms, offering type, equipment and product type and options, and may vary by country. Non-IBM content which is part of an overall IBM end user client solution may also be eligible for financing through IBM Global Financing. Non-hardware items are financed by means of loans. Other restrictions may apply. Rates and offerings are subject to change, extension or withdrawal without notice and may not be available in all countries. IBM and IBM Global Financing do not, nor intend to, offer or provide accounting, tax or legal advice to clients. Clients should consult with their own financial, tax and legal advisors. Any tax or accounting treatment decisions made by or on behalf of the client are the sole responsibility of the client. For IBM Credit LLC in California: Loans made or arranged pursuant to a California Financing Law license.

<sup>1</sup> IBM Environment, Product Recycling Programs  
<sup>2</sup> How Flexible Payment Solutions Can Accelerate Digital Transformation, IDC Technology Spotlight, sponsored by IBM Global Financing, doc #US46142520, March 2020