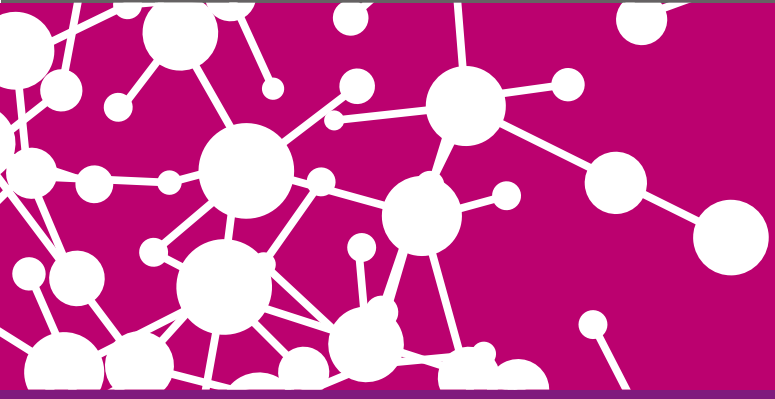


# IBM TS4500 with LTO 7 Tape Drives

IBM TS4500 Tape Library with new LTO 7 drives significantly improves the economics of storing Big Data



## Scale out for high capacity

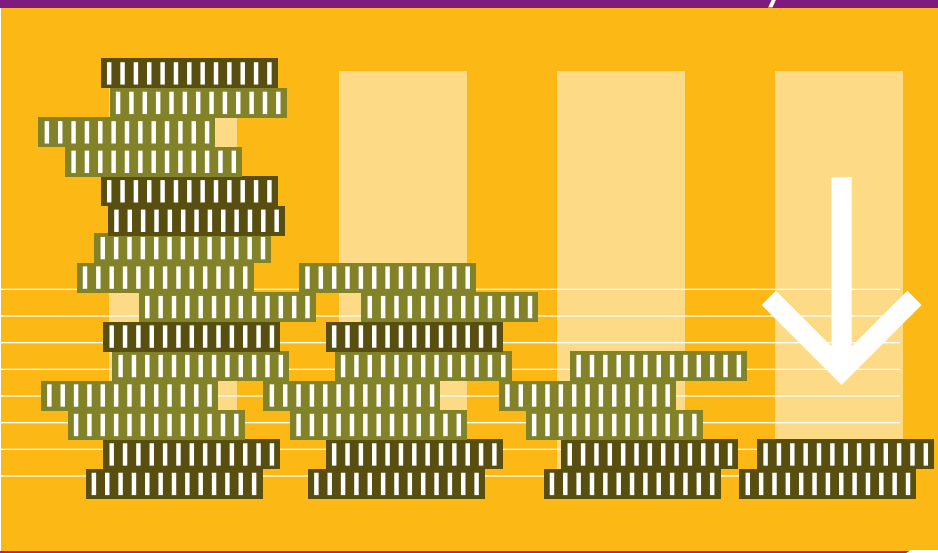
Up to 18 frames per library  
Total capacity of up to:

# 347.5 PBs\*

## Reduce cost of floor space

High density frames store 1.98 PBs\*  
in one square foot to reduce cost by:

# 65%



## Increase capacity without increasing footprint

# 12TB

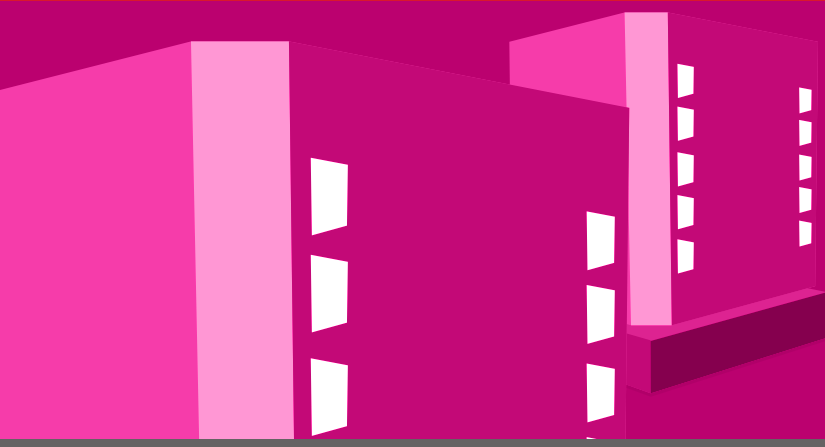
 of data:

- LTO 4 = 15 cartridges
- LTO 5 = 8 cartridges
- LTO 6 = 5 cartridges
- LTO 7 = 2 cartridges

## Improve performance

High drive speed (300 MBps) reduces  
database backup windows by:

# 35%



## Easily integrate into tiered infrastructure

Spectrum Archive reduces  
overall storage TCO by:

# 90%

Protect current investments  
Media and frame reuse\*\* saves:

# 100%



To learn more visit: [ibm.com/tape](http://ibm.com/tape)

© Copyright 2015. IBM, the IBM logo, and ibm.com are trademarks of IBM Corp., registered in many jurisdictions worldwide. Other product and service names might be trademarks of IBM or other companies.

A current list of IBM trademarks is available on the web at "Copyright and trademark information" at [www.ibm.com/legal/copytrade.s](http://www.ibm.com/legal/copytrade.s)

\* with 2.5:1 compression

\*\*TS3500 Sx4 frames only, LTO 5 and 6 media