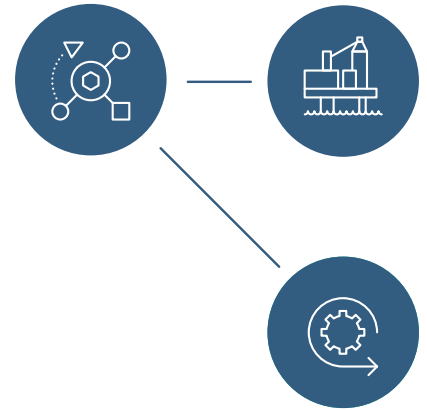


Watson IoT™

IBM Maximo APM for Energy & Utilities

Watson IoT is changing the way energy and utility companies design, build and operate their businesses



What is it?

IBM® Maximo® APM for Energy & Utilities is an open analytics platform for energy and utility companies. The solution provides a 360-degree view of interconnected assets and helps you make the right decisions with the right information at the right time. This ensures that asset replacement, maintenance and performance are optimized.

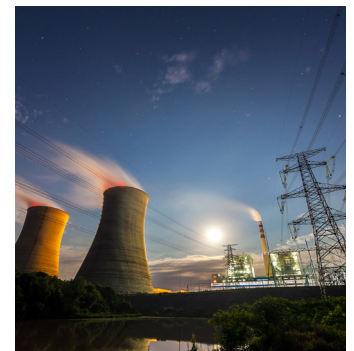
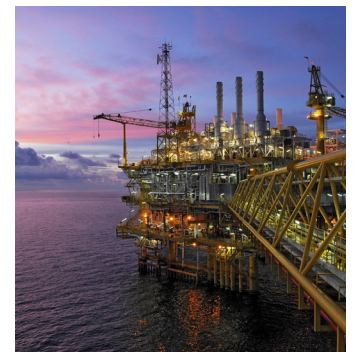
With this solution, you can:

- Obtain a comprehensive view of asset performance
- Prioritize asset investments and achieve maximum value
- Optimize maintenance
- Obtain contextual and situational awareness
- Understand performance and risk analyses and decide on asset investment

An open and extensible architecture and platform

These capabilities give you the added advantage of:

- Insights and recommendations based on artificial intelligence and predictive analytics
- Integrate with any existing data sources and operational processes
- Open Source software support
- Obtain contextual and situational awareness
- Reduce risk and improve time to value with a pre-integrated platform
 - Core platform capabilities
 - Hybrid cloud delivery
 - Open technology



Application and benefits

Applications

Asset Performance Management

Understand asset performance—past, present and future— to obtain maximum asset value.



Make well-informed decisions regarding asset operations and investments.

Predictive Maintenance

Optimize maintenance spend and activities.



Determine the best schedule for maintenance, and reduce operating expenditure while maintaining grid reliability and availability.

Situational Awareness

What's happening, from network to individual assets.



Understand performance of an individual asset as well as the network, quickly assess conditions and take corrective actions.

Wind Farm Operations and Maintenance

Situational awareness for wind farm.



Gain an understanding of wind farm efficiency and utilize operational data for continual performance improvement.

Connectivity Analytics and Maintenance

Accurately report customer-to-phase, customer-to-transformer mapping.



Fix connectivity records without the time and expense of sending crews into the field.

Partner applications address renewable energy forecasting, smart meter data analytics, asset analytics, renewable integration analytics and asset investment optimization.

Learn more

Speak to your sales rep for more information on how this solution can add value to your business networks or visit the [IBM Marketplace](#).



© Copyright IBM Corporation 2018. IBM, the IBM logo, ibm.com, Maximo, and Watson IoT are trademarks of International Business Machines Corp., registered in many jurisdictions worldwide. Other product and service names might be trademarks of IBM or other companies. A current list of IBM trademarks is available on the Web at "Copyright and trademark information" at www.ibm.com/legal/copytrade.shtml.

It is the user's responsibility to evaluate and verify the operation of any other products or programs with IBM products and programs. THE INFORMATION IN THIS DOCUMENT IS PROVIDED "AS IS" WITHOUT ANY WARRANTY, EXPRESS OR IMPLIED, INCLUDING WITHOUT ANY WARRANTIES OF MERCHANTABILITY, FITNESS FOR A PARTICULAR PURPOSE AND ANY WARRANTY OR CONDITION OF NONINFRINGEMENT. IBM products are warranted according to the terms and conditions of the agreements under which they are provided. The client is responsible for ensuring compliance with laws and regulations applicable to it. IBM does not provide legal advice or represent or warrant that its services or products will ensure that the client is in compliance with any law or regulation.