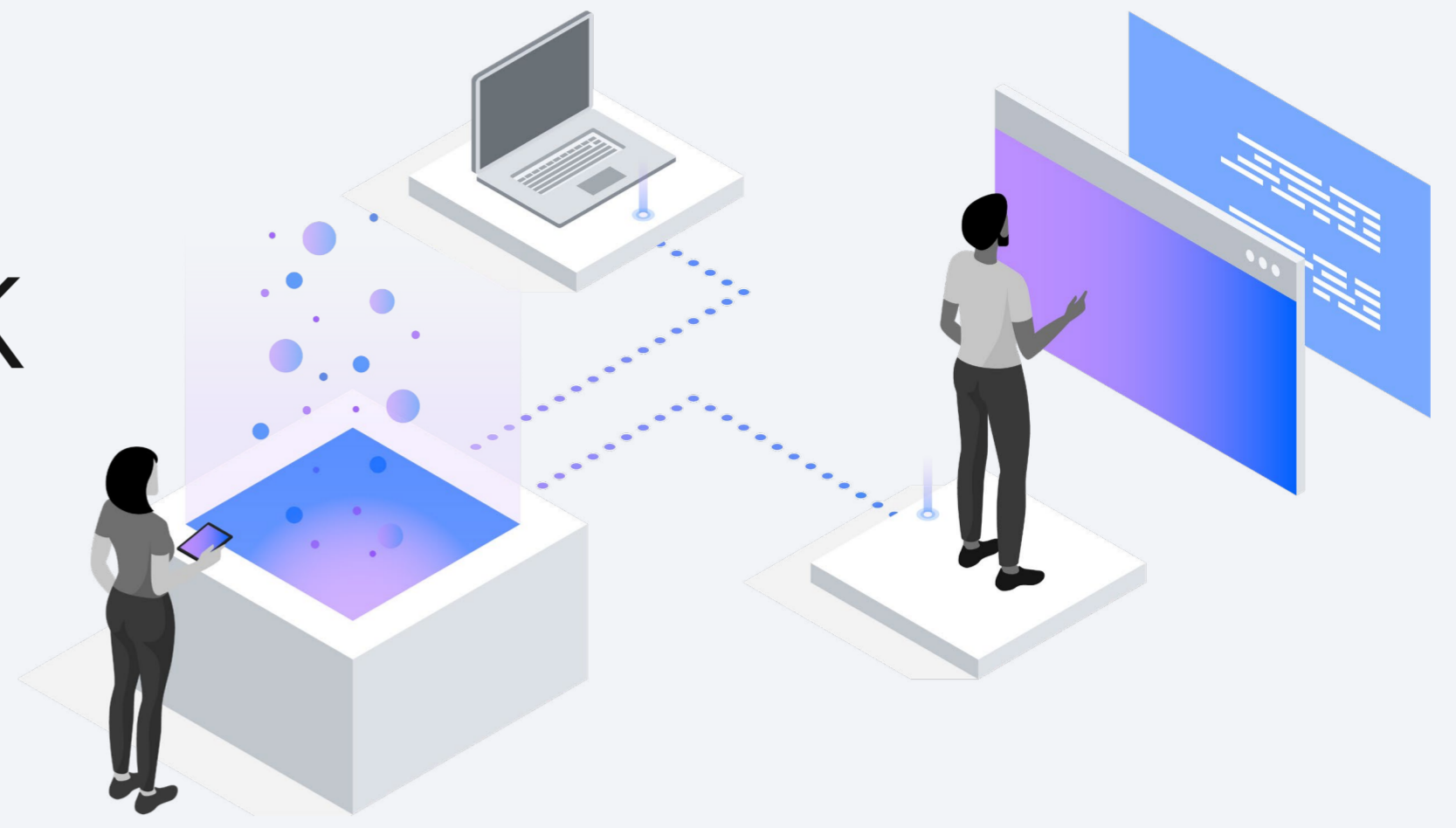


IBM Sterling Supply Chain Business Network

A cloud-based, digital business network that enables clients to streamline collaboration with trading partners across their supply chain by digitizing and automating B2B transactions utilizing EDI/API technologies.



3M+

Business connections

335%

Three-year ROI

41%

Faster onboarding

51%

More efficient management of B2B transactions

75%

Less staff time to support B2B operations¹

“IBM has exceeded my expectations. I don’t view them as a vendor, I view IBM as a partner.”²

Jeff Heyde
Dana Incorporated

92%

Cost savings using EDI vs. manual processes

50%

Faster onboarding

40%

Faster invoice payments

Learn how Saint-Gobain Abrasives increased operational efficiency



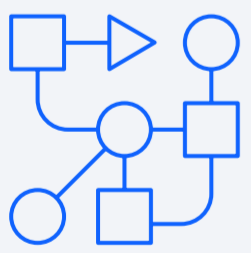
Learn how Master Lock automated its mission-critical EDI processes



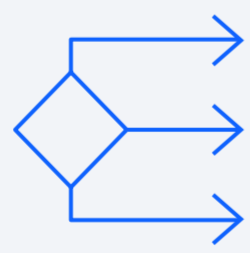
Learn how Southwire streamlined their invoicing process



Recent innovations



New B2B API Gateway accelerates B2B connections to real-time.



New self-service options for customers who prefer to handle day-to-day onboarding activities.

Achieve ROI within two years and savings of 63% in support costs over five years. It’s money the company can reinvest in the business.

“Making the move to IBM was really a no-brainer; it was truly one of the easier decisions we’ve made.”³

Phil Catlin
Formica Group

© Copyright IBM Corporation 2022. IBM and the IBM logo are trademarks of IBM Corp., registered in many jurisdictions worldwide.

1. IDC white paper “Driving Strategic Value with IBM Sterling Supply Chain Business Network.”
<https://www.ibm.com/account/reg/us-en/signup?formid=urx-36156>.
2. <https://www.ibm.com/case-studies/dana-incorporated/>.
3. <https://www.ibm.com/case-studies/formica/>.

