



# z/OS Learning Center: Introduction to ISPF

## Unit 1: The Basics of ISPF and Data Sets Module 2: The ISPF PDF Primary Options Menu

```
l. 3444  
t. Score  
PrintNumber  
  
o. 219  
DrawShape  
  
ah, 1  
16h  
GetKey
```



```
xor di, di  
mov cx, 2000  
mov ax, 700h  
rep stosw  
  
call DrawBorders  
  
mov di, 184  
mov si, offset sNext  
call PrintText  
mov di, 272  
mov si, offset sHiScore  
call PrintText
```

```
mov al, 0- mov ah, 7  
Clear screen and set color 7  
  
mov di, 3430  
mov si, offset sStop  
call PrintText  
mov di, 450  
mov si, offset sSpeed  
call PrintText
```

```
mov di, 292  
mov ax, HiScore  
call PrintNumber  
  
mov Score, 0  
  
call ChooseGame  
  
call Rand  
mov NextShape, ax  
call NewShape  
call DrawNextShape
```



## ISPF Primary Options Menu – Introduction

**This module, the ISPF PDF Primary Options Menu, explores the Program Development Facility, or PDF. This interface provides the application developer with services necessary to create and test applications. For example, you can edit program code and manage data sets, create test messages, trace and debug applications.**

**Time to complete: 30 minutes**



## **ISPF Primary Options Menu – Objectives**

**Upon completion of this module, you should be able to:**

- **Navigate from the Primary Options Menu by a variety of methods**
- **Jump directly from one menu to another**
- **Access the ISPF PDF tutorial through the Help menu**

## ISPF Primary Options Menu – PDF Primary Options Panel

The center of the PDF is the ISPF Primary Option Menu. The menu contains a list of options which may be customized, so the main menu on one z/OS system might not match the one on another system.

This is an example of the default Primary Option Menu.

```
Menu Utilities Compilers Options Status Help
                                     ISPF Primary Option Menu
Option ==>
0 Settings      Terminal and user parameters      User ID . : SMCHUGH
1 View         Display source data or listings    Time. . . : 16:57
2 Edit         Create or change source data       Terminal. : 3278
3 Utilities    Perform utility functions          Screen. . : 1
4 Foreground   Interactive language processing    Language. : ENGLISH
5 Batch        Submit job for language processing Appl ID . : PDF
6 Command      Enter TSO or Workstation commands  TSO logon : IKJACCT
7 Dialog Test  Perform dialog testing             TSO prefix: SMCHUGH
9 IBM Products IBM program development products   System ID : SC76
10 SCLM        SW Configuration Library Manager   MVS acct. : ACCNTH
11 Workplace   ISPF Object/Action Workplace       Release . : ISPF 5.7

Enter X to Terminate using log/list defaults

F1=Help      F2=Split      F3=Exit      F7=Backward  F8=Forward  F9=Swap
F10=Actions  F12=Cancel

MR a 04/014
```

## ISPF Primary Options Menu – Standard Options

The standard options on the PDF Primary Options panel include:

**Settings:** Used to display and change ISPF parameters, such as terminal characteristics and function keys.

**View:** Allows you to view sequential data sets and PDS members.

**Edit:** Allows you to edit sequential data sets and PDS members.

**Utilities:** To access utility system and data set management functions, such as printing, renaming, or deleting data sets.

**Foreground:** Used to interactively run language processing programs such as COBOL.

**Batch:** Generates and submits batch jobs through job control statements.

**Command:** Enter TSO commands while ISPF remains active.

**Dialog Test:** Allows for testing of dialog elements such as panels and messages before assembling them into applications.

**IBM Products:** Interface to other IBM products.

**SCLM:** Access to the Software Configuration and Library Manager.

**Workplace:** Access to the ISPF object/action workplace shell, an object-oriented interface to data sets, workstation files, and volumes.

## **ISPF Primary Options Menu – Four Ways to Navigate**

**You can navigate through ISPF in four different ways:**

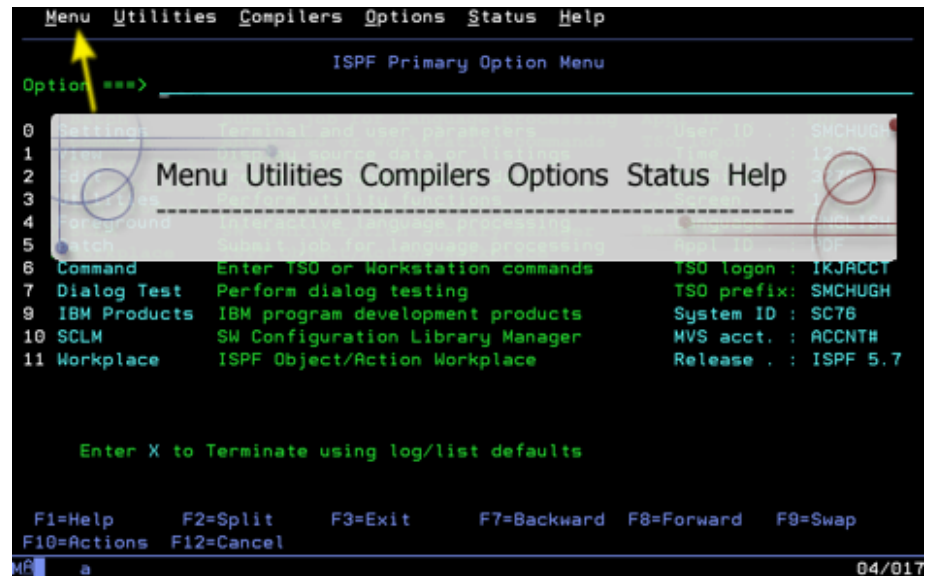
- **Action Bars**
- **Point-and-Shoot Fields**
- **Selection by Option Code**
- **Function Keys**

**As you become more familiar with ISPF, you will probably choose the methods that work best for you.**

## ISPF Primary Options Menu – Using the Action Bar – Simulation

The action bar appears at the top of the panel. The choices on the action bar vary from panel to panel.

To try a simulation of expanding the options on the action bar, click the Launch button.



## ISPF Primary Options Menu – Using the Point and Shoot Method – Simulation

To use the point-and-shoot method, move your cursor to one of the options on the menu and press Enter.

To try a simulation of point and shoot navigation, click the Launch button.

```
Menu  Utilities  Compilers  Options  Status  Help

ISPF Primary Option Menu

Option ==>

0 Settings      Terminal and user parameters      User ID   : SMCHUGH
1 View          Display source data or listings   Time     : 21:21
2 Edit          Create or change source data     Terminal : 3278
3 Utilities     Perform utility functions       Screen   : 1
4 Foreground    Interactive language processing Language  : ENGLISH
5 Batch         Submit job for language processing Appl ID  : PDF
6 Command       Enter TSO or Workstation commands TSO logon : IKJACCT
7 Dialog Test   Perform dialog testing       TSO prefix: SMCHUGH
9 IBM Products  IBM program development products System ID : SCT6
10 SCLM         SW Configuration Library Manager MVS acct. : ACCNT#
11 Workplace    ISPF Object/Action Workplace    Release  : ISPF 5.7

Enter X to Terminate using log/list defaults

F1=Help  F2=Split  F3=Exit  F7=Backward  F8=Forward  F9=Swap
F10=Actions  F12=Cancel

MR a 08/005
```



## ISPF Primary Options Menu – Option Code Selection

The command area for menu screens is identified by:

`Option ===>`

For other screens, ISPF identifies the command area by:

`Command ===>`

The command area may appear at either the top or the bottom of your menu area depending on your settings.

You can get to the command area quickly by pressing the Home key, if you are using the default setting. Alternatively, if you specify the “Tab to action bar choices” in your settings, the Home key takes you to the first entry on the Action bar.

## ISPF Primary Options Menu – Option Code Selection – Simulation

To select an option, type the number of the option next to the option or command prompt and press Enter.

To try a simulation of using option codes to navigate, click the Launch button.

```

Menu  Utilities  Compilers  Options  Status  Help
                                     ISPF Primary Option Menu
Option ==> 3

0 Settings      Terminal and user parameters      User ID . . : SMCHUGH
1 View          Display source data or listings      Time. . . : 16:30
2 Edit          Create or change source data        Terminal. : 3278
3 Utilities      Perform utility functions          Screen. . : 1
4 Foreground    Interactive language processing      Language. : ENGLISH
5 Batch         Submit job for language processing   Appl ID . : PDF
6 Command       Enter TSO or Workstation commands   TSO logon : IKJACCT
7 Dialog Test   Perform dialog testing              TSO prefix: SMCHUGH
9 IBM Products  IBM program development products          System ID : SC76
10 SCLM         SW Configuration Library Manager      MVS acct. : ACCNT#
11 Workplace    ISPF Object/Action Workplace        Release . : ISPF 5.7

Enter X to Terminate using log/list defaults

F1=Help      F2=Split      F3=Exit      F7=Backward  F8=Forward  F9=Swap
F10=Actions  F12=Cancel

MR  a  04/015

```

## ISPF Primary Options Menu – Jumping Between Panels – Frame 1

Many of the functions on the ISPF Primary Option Menu lead to additional menus. For example, if you select option 3 Utilities, you open the ISPF Utility Selection Panel. If you then select Option 2 Data Set, you navigate to the Data Set Utility. You can bypass this second menu by specifying both options (separated by a period) on the primary menu.

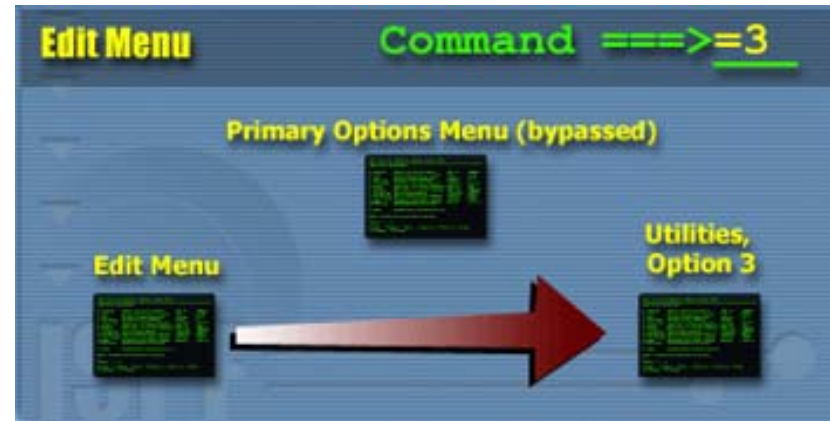
Option ==> 3.2



## ISPF Primary Options Menu – Jumping Between Panels – Frame 2

You can also jump from one option to another without having to “fall back” to the Primary Options Menu. For instance, if you are editing a file (option 2), you can jump directly to the utilities option by typing an equals sign and the number 3 on the command line.

**Command ===> =3**



## ISPF Primary Options Menu – Option Navigation Simulation

As you become more familiar with the functions of ISPF PDF, you will learn keyboard short cuts to get to the menus you use most often.

To try a simulation of using combined option codes to jumping between menus, click the Launch button.

```
Menu Utilities Compilers Options Status Help
ISPF Primary Option Menu
Option ==> 3.3
0 Settings      Terminal and user parameters      User ID   : SMCHUGH
1 View          Display source data or listings      Time     : 12:36
2 Edit          Create or change source data      Terminal : 3278
3 Utilities     Perform utility functions      Screen   : 1
4 Foreground    Interactive language processing      Language : ENGLISH
5 Batch         Submit job for language processing      Appl ID  : PDF
6 Command       Enter TSO or Workstation commands      TSO logon : IKJACCT
7 Dialog Test   Perform dialog testing      TSO prefix: SMCHUGH
9 IBM Products  IBM program development products      System ID : SC76
10 SCLM         SW Configuration Library Manager      MVS acct. : ACCNTH
11 Workplace    ISPF Object/Action Workplace      Release  : ISPF 5.7

Enter X to Terminate using log/list defaults

F1=Help      F2=Split      F3=Exit      F7=Backward  F8=Forward  F9=Swap
F10=Actions  F12=Cancel

MF a 04/017
```

## ISPF Primary Options Menu – Function Keys

Using the function keys is another way to navigate in ISPF. The keys themselves are usually located across the top of the keyboard. The purpose or action represented by each key is shown at the bottom of the panel. To activate an option, just press the corresponding function key.



## ISPF Primary Options Menu – Pop-up Windows

Windows that appear on top of other panels are called pop-up windows. They may be used to display messages and short dialogs.

The screenshot displays the ISPF Primary Option Menu. At the top, a menu bar includes 'Menu', 'Utilities', 'Compilers', 'Options', 'Status', and 'Help'. Below this, the title 'ISPF Primary Option Menu' is centered. A list of options is shown on the left, numbered 0 to 11. To the right of the list, user information is displayed, including User ID, Time, Terminal, Screen, Language, Appl ID, TSO logon, TSO prefix, System ID, MVS acct, and Release. A pop-up window with a gray background and a black border is overlaid on the bottom right of the menu, containing the text 'The option entered was invalid.' in black. Below the pop-up window, the text 'Enter X to Terminate u' is visible. At the bottom of the screen, a row of function keys is listed: F1=Help, F2=Split, F3=Exit, F7=Backward, F8=Forward, F9=Swap, F10=Actions, and F12=Cancel. The bottom left corner shows 'MR a' and the bottom right corner shows '04/014'.

```

Menu  Utilities  Compilers  Options  Status  Help

ISPF Primary Option Menu

Option ==>
0 Settings      Terminal and user parameters      User ID . : SMCHUGH
1 View          Display source data or listings   Time. . . : 16:57
2 Edit          Create or change source data      Terminal. : 3278
3 Utilities     Perform utility functions        Screen. . : 1
4 Foreground    Interactive language processing   Language. : ENGLISH
5 Batch         Submit job for language processing Appl ID . : PDF
6 Command      Enter TSO or Workstation commands TSO logon : IKJACCT
7 Dialog Test   Perform dialog testing           TSO prefix: SMCHUGH
9 IBM Products  IBM program development products System ID : SC76
10 SCLM         SW Configuration Library Manager MVS acct. : ACCNT#
11 Workplace    ISPF Object/Action Workplace     Release . : ISPF 5.7

Enter X to Terminate u

The option entered was invalid.

Pop-up window

F1=Help  F2=Split  F3=Exit  F7=Backward  F8=Forward  F9=Swap
F10=Actions  F12=Cancel

MR a 04/014
  
```

## ISPF Primary Options Menu – 3270 Keyboard PF and PA Keys

ISPF responds to PF and PA keys on the 3270 keyboard.

Two of the most important keys are PF3 (duplicated by PF15) and PF4 (duplicated by PF16). PF3 is the End key and it terminates an ISPF function. For example, after building several job steps in the Batch Job section, you press PF3. The job is submitted and you are returned to the previous menu.

The PF4 performs almost the exact same function. The only difference is that it returns you to the ISPF Primary Option Menu.

Key	Title
▶ PA1	Attention
▶ PA2	Reshow
▶ PF1/13	Help
▶ PF2/14	Split
▶ PF3/15	End
▶ PF4/16	Return
▶ PF7/19	Up
▶ PF8/20	Down
▶ PF9/21	Swap
▶ PF10/22	Left
▶ PF11/23	Right
▶ PF12/24	Retrieve





## ISPF Primary Options Menu – Split-Screen Mode - Simulation

Split-screen mode divides the screen horizontally into two separate screens, allowing you to view two different ISPF panels at the same time. Move your cursor to the line where you want the split to occur and press PF2.

To try a simulation of split-screen mode, click the Launch button.

```

File Edit Edit Settings Menu Utilities Compilers Test Help
EDIT      SMCHUGH.TEST.COBOL(IGYBLNK1) - 01.00      Columns 00001 00072
Command ==>                                     Scroll ==> PAGE
000009 /*                                           Session 1
000010 /*-----*/
000011 /* IGYBLINK $$SET1$$ - BATCH CONTROL FILE
000012 /*
000013 /* This file is used as input to IGYBLINK EXEC. It is used to
F1=Help   F2=Split   F3=Exit   F5=Rfind   F6=Rchange   F7=Up
F8=Down   F9=Swap   F10=Left  F11=Right  F12=Cancel
Menu Utilities Compilers Options Status Help

ISPF Primary Option Menu      Session 2
Option ==>
More: +
0 Settings      Terminal and user parameters      User ID . : SMCHUGH
1 View          Display source data or listings    Time . . : 13:43
2 Edit          Create or change source data       Terminal . : 3278
3 Utilities     Perform utility functions          Screen . . : 2
4 Foreground    Interactive language processing     Language . : ENGLISH
F1=Help   F2=Split   F3=Exit   F7=Backward   F8=Forward   F9=Swap
F10=Actions F12=Cancel
MF a
16/014
  
```

## ISPF Primary Options Menu – The ISPF Tutorial

ISPF has a tutorial for an online overview on using this product. To enter the tutorial, press the Help key (F1) on the terminal.

The tutorial provides context-sensitive help, so you will receive a portion of the tutorial that relates to the function you are currently using. For example, if you are on the Edit Entry Panel the help panel will look like the one shown here.

```

Tutorial ----- Edit ----- Tutorial
Option ==> _____

Edit allows you to create or change source data.

The following topics are presented in sequence, or may be selected by number:

0 - General introduction           10 - Automatic recovery
1 - Types of data sets            11 - Edit profiles
2 - Edit entry panel              12 - Edit line commands
3 - SCLM edit entry panel         13 - Edit primary commands
4 - Member selection list         14 - Labels and line ranges
5 - Display screen format         15 - Ending an edit session
6 - Scrolling data
7 - Sequence numbering
8 - Display modes (CAPS/HEX/NULLS)
9 - Tabbing (hardware/software/logical)

The following topics are presented only if selected by number:
16 - Edit models
17 - Miscellaneous notes about edit

F1=Help    F2=Split    F3=Exit    F4=Resize    F5=Exhlp    F6=Keyshelp
F7=PrvTopic F8=NxtTopic  F9=Swap    F10=PrvPage F11=NxtPage F12=Cancel
MC a 02/014

```

## **ISPF Primary Options Menu – Summary**

**In this module, The ISPF Primary Options menu, you learned**

- **The center of ISPF is the ISPF Primary Option Menu.**
- **Several ways to navigate, including action bars, point-and-shoot fields, selection by option code, function keys and how to jump between screens.**
- **How to access the tutorial**