



System i

Connecting to System i

Getting to know System i Navigator

Version 6 Release 1

IBM Confidential IBM Confidential IBM Confidential

Confidential IBM Confidential IBM Confidential IBM Confidential

IBM Confidential IBM Confidential IBM Confidential IBM Confidential

IBM Confidential IBM Confidential IBM Confidential IBM Confidential



System i

Connecting to System i

Getting to know System i Navigator

Version 6 Release 1

IBM Confidential IBM Confidential IBM Confidential IBM Confidential

IBM Confidential IBM Confidential IBM Confidential IBM Confidential

Note

Before using this information and the product it supports, read the information in "Notices," on page 21.

This edition applies to version 6, release 1, modification 0 of IBM i5/OS (product number 5761-SS1) and to all subsequent releases and modifications until otherwise indicated in new editions. This version does not run on all reduced instruction set computer (RISC) models nor does it run on CISC models.

© Copyright IBM Corporation 1998, 2008.

US Government Users Restricted Rights – Use, duplication or disclosure restricted by GSA ADP Schedule Contract with IBM Corp.

Contents

Getting to know System Navigator for i	1
PDF file for Getting to know System Navigator for i	3
System Navigator for i functions by release	3
Requirements for installing System Navigator for i	14
Installing System Navigator for i	15
Adding system connections to System Navigator for i	16

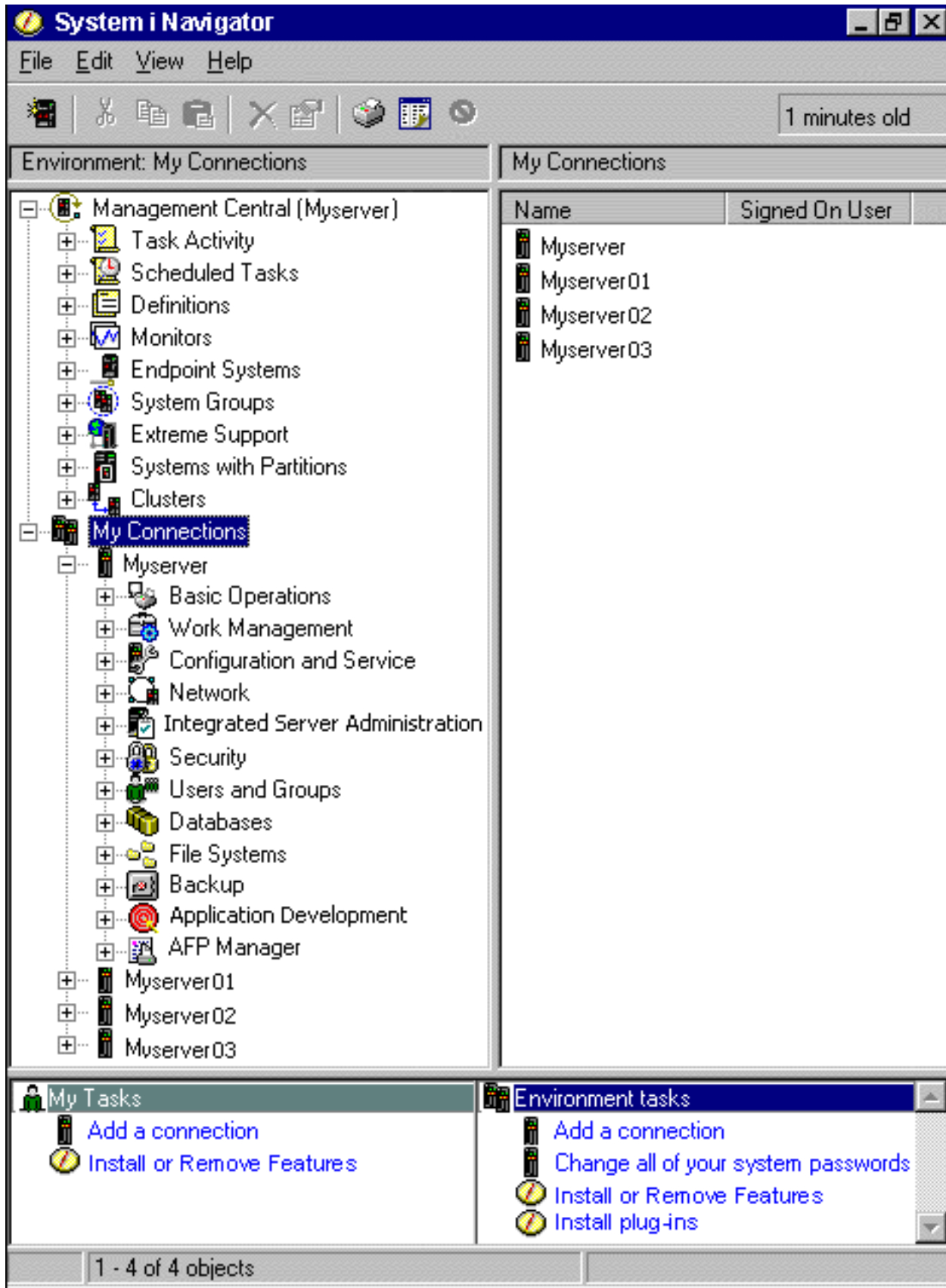
Working with System Navigator for i	16
Related information for System Navigator for i	18

Appendix. Notices	21
Trademarks	22
Terms and conditions	23

Getting to know System Navigator for i

System Navigator for i is a graphical interface for Windows clients. With System Navigator for i, you can use a graphical interface to manage and administer your systems.

Here is an example of the System Navigator for i main window.



From this example, you can see the System Navigator for i hierarchical tree view in the left pane of the window. It provides a familiar user interface for those experienced in using graphical interfaces. It also decreases the need for users to learn the character-based interface. System Navigator for i functionality includes system navigation, configuration, systems management, and monitoring capabilities. For step-by-step instructions on how to perform tasks in System Navigator for i, see the System Navigator for i online help.

PDF file for Getting to know System Navigator for i

You can view and print a PDF file of this information.


To view or download the PDF version of this document, select Getting to know System Navigator for i (about 422 KB).

Saving PDF files

To save a PDF on your workstation for viewing or printing:

1. Right-click the PDF link in your browser.
2. Click the option that saves the PDF locally.
3. Navigate to the directory in which you want to save the PDF.
4. Click **Save**.

Downloading Adobe Reader

You need Adobe Reader installed on your system to view or print these PDFs. You can download a free copy from the Adobe Web site (www.adobe.com/products/acrobat/readstep.html) .

Related reference:

“Related information for System Navigator for i” on page 18
 IBM® Redbooks® publications, Web sites, and other information center topic collections contain information that relates to System Navigator for i. You can view or print any of the PDF files.

System Navigator for i functions by release

The System Navigator for i functions that are available for the system to which you are connected depend on which version of the operating system is running on that system.

The following table lists which functions are available for each release of the IBM i operating system.

Note: In the table, the check sign (✓) indicates that the function is supported in this release, and the check plus sign (⊕) indicates that the function has been enhanced in this release.

Table 1. System Navigator for i functions

Function	Description	V5R3	V5R4	V6R1
Management Central				
Management Central	Manage multiple IBM i platforms.	⊕	⊕	⊕
Monitors	System Monitors - Monitor real-time performance of one or more systems.	✓	✓	⊕

Table 1. System Navigator for i functions (continued)

Function	Description	V5R3	V5R4	V6R1
	Job Monitors - Monitor jobs on one or more systems.			
	Message Monitors - Monitor messages on one or more systems.			
	B2B Activity Monitors - Monitor your B2B transactions.			
	File Monitors - Monitor files for any changes or for specific text strings.			
	Graph History - Provide a graphical view of performance data collected over days, weeks, months, or years.			
Commands	Run and save commands.			
Packages	Create, save, and distribute objects.			
Hardware and Software Inventory	Collect and display inventory.			
Fixes Inventory	Manage software fixes (PTFs).			
Scheduling	Schedule Management Central tasks.			
Collection Services	Collect performance data.			
System Values	Display, change, and distribute system values.			
Distributed User and Group Administration	Create, change, and distribute users and groups.			
Licensed Program Installation	Create LPs and fixes, distribute and install.			
Extreme Support	Secure, personalized service and electronic support.			
Secure Sockets Layer (SSL) Support	Secure transmissions between a central system and endpoint systems.			
	Enhanced SSL and Authentication - Sign on to one system and be recognized by others.			

Table 1. System Navigator for i functions (continued)

Function	Description	V5R3	V5R4	V6R1
Synchronize Date and Time	Synchronize date and time system values across a network of systems using Compare and Update System Values.			
Cluster Proven	High availability for Management Central when running in a cluster environment.			
Synchronize EIM and Kerberos Configurations	Use the Synchronize Functions wizard to duplicate your EIM and Kerberos configurations from a model system to your endpoints.			
System Navigator for i for Wireless				
System Navigator for i for Wireless	Remotely monitor system performance and status.			
System Navigator for i Tasks on the Web				
System Navigator for i Tasks on the Web	Select System Navigator for i tasks directly accessible from a Web browser.			
Basic Operations	Manage IBM i messages, printer output, printers, and jobs.			
	Messages			
	Printers			
	Printer output			
	Jobs			
Command Prompter	Prompt for CL commands from the Web.			
Work Management	Manage daily system operations and workload.			
	Active jobs			
	Server jobs			
	Job queues			
	Subsystems			
	Output queues			

Table 1. System Navigator for i functions (continued)

Function	Description	V5R3	V5R4	V6R1
	Memory pools			
	System status			
Database	Administer DB2® for i from the Web.			
	Tables, objects, views, journals, and indexes			
	Constraints			
	Sequences			
	SQL procedures and packages			
	Schemas			
	Database performance monitors			
	Import and export data			
Hardware	Manage your IBM i hardware from the Web.			
	Configuration and service			
Network	Manage your IBM i TCP/IP configuration and other communications from the Web.			
	TCP/IP servers			
	Universal connection wizard			
Intelligent Agents Intelligent Agent Support	Create and manage autonomic Java™ agents to maintain your systems.			
Application Administration Application Administration	Control user's access to functions.			

Table 1. System Navigator for i functions (continued)

Function	Description	V5R3	V5R4	V6R1
Administration of Plug-ins	Control user's access to System Navigator for i plug-ins.			
Centralized Administration	Define an administration system to centralize your Application Administration settings.			
Basic Operations	Manage lists of messages, printer output, and printers.			
Basic Operations				
Messages	Work with messages.			
Printers	Manage printers.			
Printer Output	Work with printer output.			
	Cut, copy, paste, and drag printer output.			
AFP Workbench Viewer	Display printer output.			
Jobs	Work with user jobs.			
Job logs	Display job log for a job.			
Command Prompter	Prompt for CL commands within System Navigator for i.			
Graphical CL Command Prompter				
Work Management	Manage system operation and the daily workload on the system.			
Work Management				
Active Jobs	Work with active jobs.			
	Call Stack - View the call stack for an active job.			
	Library List - View the library list for an active job.			
	Locked Objects - Work with the object locks for an active job.			

Table 1. System Navigator for i functions (continued)

Function	Description	V5R3	V5R4	V6R1
	Open Library Objects - View and work with the open library objects for an active job.			
	Open File System Objects - View and work with the open file system objects for an active job.			
	Elapsed Performance Statistics - Monitor job performance using Elapsed Performance Statistics.			
	Threads - Work with threads running under an active job.			
	Transactions - Work with transactions attached to an active job.			
	Last SQL Statement - Work with last SQL statement that was run by an active job.			
Server Jobs	Work with server jobs.			
Job Queues	Work with active and all job queues.			
Subsystems	Work with active subsystems.			
Memory Pools	Work with memory pools.			
Output Queues	Work with all output queues on the system.			
System Status	Quickly and easily check the status of a system.			
Hardware Configuration and Service	Manage hardware and software on your system.			
	System Values - Work with all system values.			
	Time Management - Adjust time and manage time zones.			
	Hardware Inventory - Display the hardware for the system.			

Table 1. System Navigator for i functions (continued)

Function	Description	V5R3	V5R4	V6R1
	Software Inventory - Display the software for the system.			
	History Log - Display messages in the system history log.			
Disk Management	Manage the disk units on your system.			
	Work with disk unit balancing, status, and capacity.			
	Manage disk units, HSM, and compression. Add, move, and remove disk units.			
	Set up and manage independent disk pools.			
	Graphical View - Displays all disk units in a parity set, mirrored pairs, active, and more.			
	Print the graphical view.			
	Parity Sets - Start, stop, and resynchronize parity.			
	Parity Sets - Change parity optimization.			
	Geographic Mirroring - Mirror independent disk pools to systems at other sites.			
LPAR Configuration	Configure and manage local partitions.			
Simple Cluster Configuration	Configure and manage two-node clusters.			
Tape Devices	Support for stand-alone tape devices and tape libraries.			
	Tape image catalogs.			
	Virtual tape devices.			
Network				

Table 1. System Navigator for i functions (continued)

Function	Description	V5R3	V5R4	V6R1
Network Functions	Manage your IBM i TCP/IP configuration and other communication interfaces using wizards, configure new systems, and start systems in one step when TCP/IP starts.			
	Access IBM i Internet applications like IBM Web Administration for IBM i.			
	Manage point-to-point communications.			
	Set up and manage TCP/IP interfaces.			
	Set up and manage applications including Domain Name System (DNS), Dynamic Host Configuration Protocol (DHCP), IBM i Support for Windows Network Neighborhood (IBM i NetServer), Network File System (NFS), data communication equipment (DCE), and Directory server (LDAP).			
	Set up and manage IP security.			
	Set up virtual private networking (VPN).			
	Manage additional IP interface and line types (PPP for example) over L2TP and ISDN, WAN and Circuitless IP.			
	Manage TCP/IP quality of service.			
	NetStat - Detailed information for interfaces, routes, connections, physical interface activity.			
Enterprise Identity Mapping (EIM)	Inexpensive cross-platform single sign-on.			
	Create and manage mapping policies.			
	Test EIM mappings.			
	Support for x.509 and Digital Certificates.			
Integrated Server Administration Integrated operating systems and environments	Manage integrated Windows servers.			

Table 1. System Navigator for i functions (continued)

Function	Description	V5R3	V5R4	V6R1
	Support for integrated servers that use Integrated xSeries® Server (IXS), Integrated xSeries Adapter (IXA), and internet SCSI host bus adapter (iSCSI HBA) hardware.			
	Start and stop integrated servers, view server status.			
	Manage users and disk storage for your integrated servers.			
	Manage integrated AIX® and Linux servers.			
Security				
Security	Object authority and security system values.			
Cryptographic Services Key Management	Manage cryptographic master keys and key stores.			
Intrusion Detection	Configure, manage, and monitor intrusion detection on the system.			
Permissions	Manage object authority.			
Security Policies	Maintain security and auditing policies.			
Security Configuration Wizard	Configure security.			
Users and Groups	Manage IBM i users and groups.			
Secure Sockets Layer (SSL) Support	Use SSL to secure IBM i applications.			
Network Authentication Service	Easily create and manage Kerberos tickets to authenticate users.			
	Create and manage keytab entries.			
Object Signing and Signature Verification				

Table 1. System Navigator for i functions (continued)

Function	Description	V5R3	V5R4	V6R1
Database Support	Administration of DB2 for i.			
Multiple Databases	Multiple databases now supported using independent disk pools.			
Manage DB2 Objects	Work with complex objects, procedures, and functions.			
	Tables, views, journals, indexes, and aliases.			
	Sequence objects, partitioned tables, check pending constraints, materialized query tables and more.			
	Objects organized by container.			
Reorganize Tables	Stop, resume, and view progress of table reorganization.			
SQL	Create, save, and run SQL scripts.			
	Collect and view SQL performance data using SQL performance monitors.			
	Collect and view SQL performance data using SQL Plan Cache.			
	Collect and view SQL performance data using SQL Plan Cache Event Monitors.			
	Save SQL performance data to a spreadsheet.			
	Save SQL scripts to a host physical file, or open SQL scripts from a host physical file.			
	View the SQL statements used to perform database actions using Show SQL.			
	Library support enhanced to support SQL object schema.			
Visual Explain	Visual description of queries.			

Table 1. System Navigator for i functions (continued)

Function	Description	V5R3	V5R4	V6R1
	Refresh visual description of queries that are actively running.			
Database Navigator	Visual description of your database.			
iSeries® Graphical Debugger	Launch and run from SQL scripts.			
Health Center	Use SQL schemas to test table size limits.			
	View environmental limits and database object activity counts.			
Index Advisor	Display index advised information from CQE and SQE.			
Integrated File System	Work with the integrated file system.			
Integrated File System	Cut, copy, paste, create, and rename integrated file system files.			
	Drag, cut, copy, and paste QSYS objects.			
Dynamic Mount Information	Display the properties of the system's mounted file systems like User-Defined File Systems (UDFS) and Network File Systems (NFS).			
File Shares	List and work with NetServer File Shares.			
Folder Attributes Information	Collect the attributes of the folder and its contents, and allow users to work with the collected data and to display customized reports.			
Additional Attributes	Display object attributes.			
Virus Scanning	Provide support for scanning files using third-party virus scanning software.			
Advanced Function Printing (AFP) AFP Manager	Manage AFP resources, font mapping tables, and Print Services Facility™ (PSF).			
Intelligent Routing	Specify any combination of stream file, spooled file, or e-mail for PDF output file.			
Backup				

Table 1. System Navigator for i functions (continued)

Function	Description	V5R3	V5R4	V6R1
Backup	Schedule backups.			
Backup, Recovery, and Media Services (BRMS)	BRMS licensed program (System Navigator for i plug-in).			
	Global policy properties			
	View and save HTML-based reports.			
	Reclaim media.			
	Manage devices.			
	Backup policy omits of folders, libraries, and library objects.			
	Restore printer output and archive objects.			
Application Development	Work with application development tools.			
Plug-in Support	Create plug-ins using Java.			
C++	Create plug-ins using C++.			
Visual Basic	Create plug-ins using Visual Basic.			

Requirements for installing System Navigator for i

Your PC hardware and software must meet certain requirements before you can install System Navigator for i.

You need to have IBM i Access for Windows installed on the system from which you install System Navigator for i. For information about requirements to install IBM i Access for Windows, see Prerequisites to set up the PC for IBM i Access for Windows.

However, IBM i Access for Windows is not required on the systems that you connect to with System Navigator for i. The only software requirement for these systems is the IBM i host servers option (option 12 when you install the IBM i operating system).

Note: System Navigator for i does not support the Itanium processor.

Related tasks:

“Installing System Navigator for i”

All System Navigator for i features are packaged with IBM i Access for Windows. Assuming that your PC meets the hardware and software requirements, you need to install the System Navigator for i features when you install IBM i Access for Windows.

Installing System Navigator for i

All System Navigator for i features are packaged with IBM i Access for Windows. Assuming that your PC meets the hardware and software requirements, you need to install the System Navigator for i features when you install IBM i Access for Windows.

Prerequisites

You need to have IBM i Access for Windows installed on the system from which you install System Navigator for i. However, IBM i Access for Windows is not required on the systems that you connect to with System Navigator for i. The only software requirement for these systems is the IBM i host servers option (option 12 when you install the IBM i operating system).

To install System Navigator for i on your PC, follow the instructions to install IBM i Access for Windows on your PC. To install all of the System Navigator for i and IBM i Access for Windows features, select the **Complete installation** option.

If you do not use the **Complete installation** option, follow these steps to install System Navigator for i features:

1. During the installation of IBM i Access for Windows, select the **Custom** installation option.
2. In the **Custom Setup** window, expand the System Navigator for i feature to see all of the subfeatures. When you install IBM i Access for Windows for the first time, only some of the System Navigator for i subfeatures are preselected. The icon next to each feature shows the installation state of the feature.
3. Click the icon next to System Navigator for i and change the installation state to install all subfeatures.
4. To deselect the subfeatures that you do not want installed, click the icon next to these subfeatures and change the installation state to not be available.

If you have a previous release of System Navigator for i installed on your PC, the default action on an upgrade to this release is to install the same System Navigator for i features that are currently installed. To add or remove features, choose **Custom installation** and follow the steps above to select the features you want to install.

Related concepts:

“Requirements for installing System Navigator for i” on page 14

Your PC hardware and software must meet certain requirements before you can install System Navigator for i.

“Working with System Navigator for i”

With System Navigator for i, you can perform many system administration tasks.

Related tasks:

“Adding system connections to System Navigator for i”

After you have installed System Navigator for i, you need to add connections to System Navigator for i.

Related information:

System i Access for Windows

System i Access for Windows: Installation and setup

Setting up the PC

Adding system connections to System Navigator for i

After you have installed System Navigator for i, you need to add connections to System Navigator for i.

To add connections to System Navigator for i, follow these steps:

1. Double-click the **System Navigator for i** icon on your Windows desktop.
2. Click **Yes** to create a connection.
3. Follow the instructions in the Add Connection wizard.
4. To add another system connection, click **File > Connection to Servers > Add Connection** in the System Navigator for i main window.

After you have System Navigator for i running, refer to the System Navigator for i online help for instructions to perform tasks.

Related tasks:

“Installing System Navigator for i” on page 15

All System Navigator for i features are packaged with IBM i Access for Windows. Assuming that your PC meets the hardware and software requirements, you need to install the System Navigator for i features when you install IBM i Access for Windows.

Working with System Navigator for i

With System Navigator for i, you can perform many system administration tasks.

After you have installed System Navigator for i, use the online help for step-by-step instructions for all the individual tasks that you can do in System Navigator for i. In the main System Navigator for i window, click **Help > Help Topics**, and then use "What can I do with ...?" as a search string to find the tasks you can perform in System Navigator for i.

System Navigator for i concepts

Connect your network

Use the Network component of System Navigator for i to configure and manage network communications on your system. Use wizards to configure the interfaces, routes, and systems that are necessary for network communications. Verify connectivity using the PING and trace route utilities. Then, choose from a variety of functions to customize the network; for example, you can select IP policies to control and secure your network traffic using quality of service (QoS) or virtual private network (VPN), or choose Remote Access Services to create point-to-point connections.

System Navigator for i concepts

Limit application availability

With Application Administration, administrators can limit or grant access to functions, including several System Navigator for i functions, and other applications for the users and groups on a specific system. Administrators can also centrally manage many of the properties used by IBM i Access for Windows clients and centrally control environment, password, connection, service, and language settings.

Manage logical partitions

Use System Navigator for i to access your logical partition information, change logical partition configuration, manage security, and change processing resources without restarting a system. On a IBM i platform, you can use System Navigator for i, dedicated service tools (DST), and system service tools (SST) to manage your logical partitions. If you are working with logical partitions on IBM systems and hardware, or models such as 5xx, see Partitioning the system for more information.

Manage multiple systems

With Management Central, you can manage tasks across one or more systems simultaneously. Simplify your systems management with task scheduling, real-time performance monitoring, managing fixes (or PTFs), distributing objects, managing users and groups, running commands from a central system, and more.

Manage your hardware

Use System Navigator for i to configure, protect, and manage all of your disk units and disk pools, as well as work with mirroring and parity protection. You can view all stand-alone devices as well as all the tape resources and cartridges within your tape libraries. Using System Navigator for i, you can duplicate tapes, display or print volume labels, eject a tape from a tape library, format a tape, make a tape cartridge or device (vary it on), make a tape device unavailable (vary it off), print save-or-restore-tape information, print volume contents, and reset tape resources.

Manage your system workload

System jobs are created by the operating system to control system resources and perform system functions. System jobs run when the system starts, without user input. These jobs perform a variety of tasks, such as starting the operating system, starting and ending subsystems, and scheduling jobs.

Secure your network

Network security means that your customers, employees, and business partners can obtain the information that they need to do business with you in a secure environment. System Navigator for i has several integrated features that can help build a strong defense against the security risks you might encounter along the way. Use System Navigator for i to configure everything from your basic system security policy to secure end-to-end VPN connections, filter rules, address translation, Secure Sockets Layer (SSL), Enterprise Identity Mapping, and much more.

Work with database records

You can perform many of your database tasks using System Navigator for i. These tasks include creating and maintaining database objects, inserting or changing data, monitoring and analyzing query performance, and creating a map of your database. See Getting started with System Navigator for i Database for more details.

Related tasks:

“Installing System Navigator for i” on page 15

All System Navigator for i features are packaged with IBM i Access for Windows. Assuming that your PC meets the hardware and software requirements, you need to install the System Navigator for i features when you install IBM i Access for Windows.

Related information:

Management Central

Managing logical partitions by using System i Navigator, DST, and SST

 Partitioning the system

Disk management

Tape

Network security

Getting started with System i Navigator Database

Quality of service

Virtual Private Networking (VPN)

Remote Access Services: PPP connections

Networking

System jobs







Managing jobs

Application Administration


Related information for System Navigator for i

IBM Redbooks publications, Web sites, and other information center topic collections contain information that relates to System Navigator for i. You can view or print any of the PDF files.

IBM Redbooks

- Managing OS/400® with Operations Navigator V5R1 Volume 1: Overview and More  (10.5 MB)
- Managing OS/400 with Operations Navigator V5R1 Volume 2: Security  (3.9 MB)
- Managing OS/400 with Operations Navigator V5R1 Volume 3: Configuration and Service  (3.2 MB)
- Managing OS/400 with Operations Navigator V5R1 Volume 4: Packages and Products  (1.8 MB)
- Managing OS/400 with Operations Navigator V5R1 Volume 5: Performance Management  (5.7 MB)
- Managing OS/400 with Operations Navigator V5R1 Volume 6: Networking  (3.6 MB)

Web sites

- System Navigator for i home page 
The System Navigator for i home page includes functional release overviews, news about technical conferences, and other topics.

Other information

- System Navigator for i for Wireless
- System Navigator for i tasks on the Web

- Application Administration
- Management Central
- Performance
- Maintaining and managing IBM i and related software
- Developing System Navigator for i plug-ins

Related reference:

“PDF file for Getting to know System Navigator for i” on page 3
You can view and print a PDF file of this information.

Appendix. Notices

This information was developed for products and services offered in the U.S.A.

IBM may not offer the products, services, or features discussed in this document in other countries. Consult your local IBM representative for information on the products and services currently available in your area. Any reference to an IBM product, program, or service is not intended to state or imply that only that IBM product, program, or service may be used. Any functionally equivalent product, program, or service that does not infringe any IBM intellectual property right may be used instead. However, it is the user's responsibility to evaluate and verify the operation of any non-IBM product, program, or service.

IBM may have patents or pending patent applications covering subject matter described in this document. The furnishing of this document does not grant you any license to these patents. You can send license inquiries, in writing, to:

IBM Director of Licensing
IBM Corporation
North Castle Drive
Armonk, NY 10504-1785
U.S.A.

For license inquiries regarding double-byte (DBCS) information, contact the IBM Intellectual Property Department in your country or send inquiries, in writing, to:

IBM World Trade Asia Corporation
Licensing
2-31 Roppongi 3-chome, Minato-ku
Tokyo 106-0032, Japan

The following paragraph does not apply to the United Kingdom or any other country where such provisions are inconsistent with local law: INTERNATIONAL BUSINESS MACHINES CORPORATION PROVIDES THIS PUBLICATION "AS IS" WITHOUT WARRANTY OF ANY KIND, EITHER EXPRESS OR IMPLIED, INCLUDING, BUT NOT LIMITED TO, THE IMPLIED WARRANTIES OF NON-INFRINGEMENT, MERCHANTABILITY OR FITNESS FOR A PARTICULAR PURPOSE. Some states do not allow disclaimer of express or implied warranties in certain transactions, therefore, this statement may not apply to you.

This information could include technical inaccuracies or typographical errors. Changes are periodically made to the information herein; these changes will be incorporated in new editions of the publication. IBM may make improvements and/or changes in the product(s) and/or the program(s) described in this publication at any time without notice.

Any references in this information to non-IBM Web sites are provided for convenience only and do not in any manner serve as an endorsement of those Web sites. The materials at those Web sites are not part of the materials for this IBM product and use of those Web sites is at your own risk.

IBM may use or distribute any of the information you supply in any way it believes appropriate without incurring any obligation to you.

Licensees of this program who wish to have information about it for the purpose of enabling: (i) the exchange of information between independently created programs and other programs (including this one) and (ii) the mutual use of the information which has been exchanged, should contact:

IBM Corporation

Software Interoperability Coordinator, Department YBWA
3605 Highway 52 N
Rochester, MN 55901
U.S.A.

Such information may be available, subject to appropriate terms and conditions, including in some cases, payment of a fee.

The licensed program described in this document and all licensed material available for it are provided by IBM under terms of the IBM Customer Agreement, IBM International Program License Agreement, IBM License Agreement for Machine Code, or any equivalent agreement between us.

Any performance data contained herein was determined in a controlled environment. Therefore, the results obtained in other operating environments may vary significantly. Some measurements may have been made on development-level systems and there is no guarantee that these measurements will be the same on generally available systems. Furthermore, some measurements may have been estimated through extrapolation. Actual results may vary. Users of this document should verify the applicable data for their specific environment.

Information concerning non-IBM products was obtained from the suppliers of those products, their published announcements or other publicly available sources. IBM has not tested those products and cannot confirm the accuracy of performance, compatibility or any other claims related to non-IBM products. Questions on the capabilities of non-IBM products should be addressed to the suppliers of those products.

All statements regarding IBM's future direction or intent are subject to change or withdrawal without notice, and represent goals and objectives only.

This information contains examples of data and reports used in daily business operations. To illustrate them as completely as possible, the examples include the names of individuals, companies, brands, and products. All of these names are fictitious and any similarity to the names and addresses used by an actual business enterprise is entirely coincidental.

COPYRIGHT LICENSE:

This information contains sample application programs in source language, which illustrate programming techniques on various operating platforms. You may copy, modify, and distribute these sample programs in any form without payment to IBM, for the purposes of developing, using, marketing or distributing application programs conforming to the application programming interface for the operating platform for which the sample programs are written. These examples have not been thoroughly tested under all conditions. IBM, therefore, cannot guarantee or imply reliability, serviceability, or function of these programs.

Each copy or any portion of these sample programs or any derivative work, must include a copyright notice as follows:

© (your company name) (year). Portions of this code are derived from IBM Corp. Sample Programs. © Copyright IBM Corp. _enter the year or years_. All rights reserved.

If you are viewing this information softcopy, the photographs and color illustrations may not appear.

Trademarks

The following terms are trademarks of International Business Machines Corporation in the United States, other countries, or both:

Advanced Function Printing
AFP
AIX
DB2
i5/OS
IBM
iSeries
NetServer
OS/400
Print Services Facility
Redbooks
System i
xSeries

Adobe, the Adobe logo, PostScript, and the PostScript logo are either registered trademarks or trademarks of Adobe Systems Incorporated in the United States, and/or other countries.

Intel, Intel logo, Intel Inside, Intel Inside logo, Intel Centrino, Intel Centrino logo, Celeron, Intel Xeon, Intel SpeedStep, Itanium, and Pentium are trademarks or registered trademarks of Intel Corporation or its subsidiaries in the United States and other countries.

Microsoft, Windows, Windows NT, and the Windows logo are trademarks of Microsoft Corporation in the United States, other countries, or both.

Java and all Java-based trademarks are trademarks of Sun Microsystems, Inc. in the United States, other countries, or both.

Linux is a registered trademark of Linus Torvalds in the United States, other countries, or both.

Other company, product, or service names may be trademarks or service marks of others.

Terms and conditions

Permissions for the use of these publications is granted subject to the following terms and conditions.

Personal Use: You may reproduce these publications for your personal, noncommercial use provided that all proprietary notices are preserved. You may not distribute, display or make derivative works of these publications, or any portion thereof, without the express consent of IBM.

Commercial Use: You may reproduce, distribute and display these publications solely within your enterprise provided that all proprietary notices are preserved. You may not make derivative works of these publications, or reproduce, distribute or display these publications or any portion thereof outside your enterprise, without the express consent of IBM.

Except as expressly granted in this permission, no other permissions, licenses or rights are granted, either express or implied, to the publications or any information, data, software or other intellectual property contained therein.

IBM reserves the right to withdraw the permissions granted herein whenever, in its discretion, the use of the publications is detrimental to its interest or, as determined by IBM, the above instructions are not being properly followed.

You may not download, export or re-export this information except in full compliance with all applicable laws and regulations, including all United States export laws and regulations.

IBM MAKES NO GUARANTEE ABOUT THE CONTENT OF THESE PUBLICATIONS. THE PUBLICATIONS ARE PROVIDED "AS-IS" AND WITHOUT WARRANTY OF ANY KIND, EITHER EXPRESSED OR IMPLIED, INCLUDING BUT NOT LIMITED TO IMPLIED WARRANTIES OF MERCHANTABILITY, NON-INFRINGEMENT, AND FITNESS FOR A PARTICULAR PURPOSE.

IBM Confidential IBM Confidential IBM Confidential IBM Confidential

IBM Confidential IBM Confidential IBM Confidential IBM Confidential



Printed in USA

IBM Confidential IBM Confidential IBM Confidential IBM Confidential

IBM Confidential IBM Confidential IBM Confidential IBM Confidential