

DB2 Web Query Interfaces

There are several different access methods within DB2 Web Query and their related products. Here is a brief summary of the various interface and access methods.

Method: DB2 Web Query – website (<http://server:11331/webquery>)

Output types: Simple reports, simple graphs, composite documents, HTML dashboards

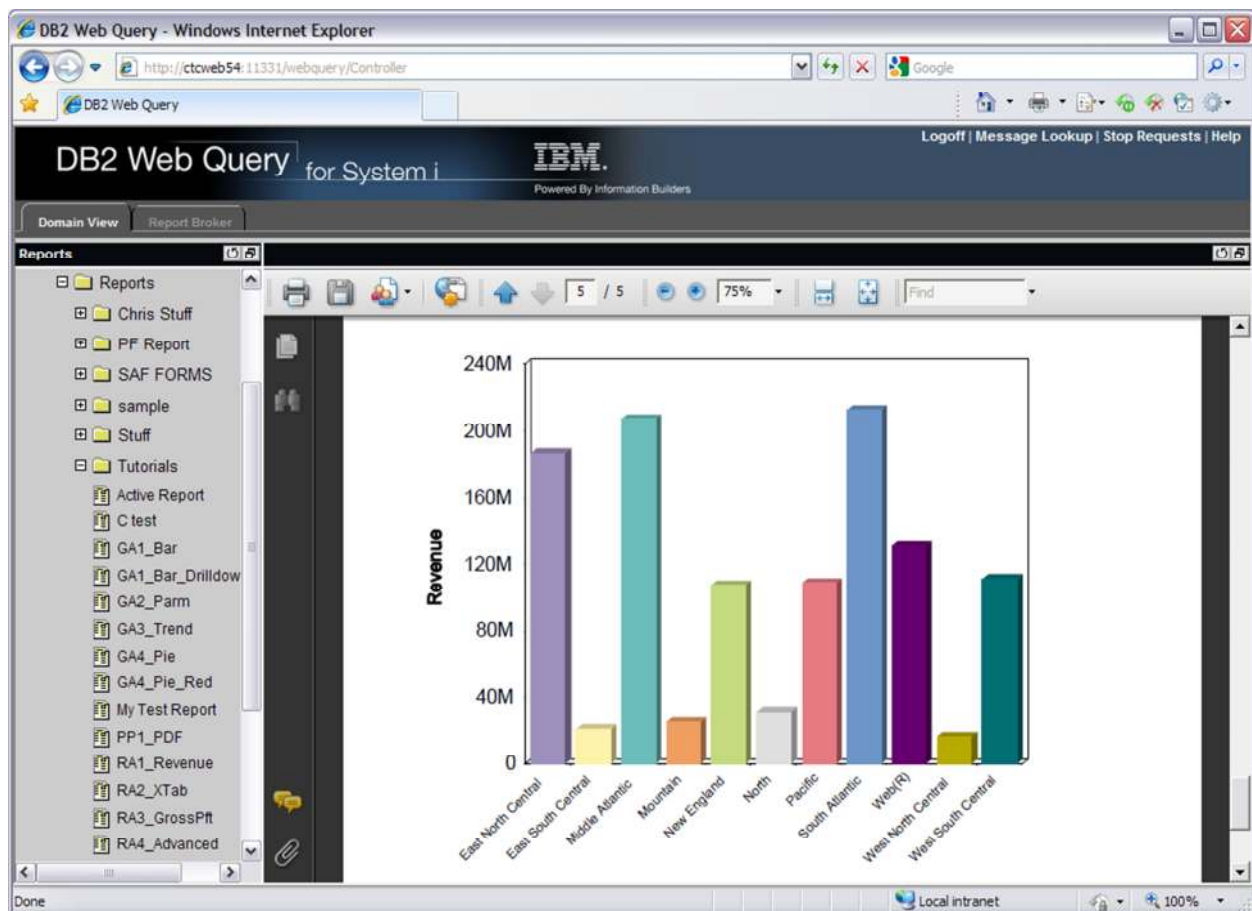
Output formats: HTML, AHTML¹, OLAP², PDF, Excel, PS, Text, Tab delimited, XML

Input Interface: Web browser

Output Interface: Web browser, physical file, spool file

Required items: Base DB2 Web Query version 1.1.0 and higher

Notes: This interface requires no additional purchases. This is the only interface to handle all report types and formats. This interface is the only one to handle OLAP reports.



Method: DB2 Web Query - RUNWEBQRY CL command

Output types: Simple reports

Output formats: Table, Spool File

Input Interface: Green screen

Output Interface: Physical file, spool file

Required items: Base DB2 Web Query version 1.1.0 and higher

Notes: The output generated is limited to only spool file and physical file, none of the newer styled formats like PDF or Excel. Cannot handle parameters.

```
CTCWEB54 - R540
File Edit View Communication Actions Window Help
Run Web Query Report (RUNWEBQRY)

Type choices, press Enter.

Domain HREF . . . . . > rdandrew_ Character value
Folder HREF . . . . . > myfolder1234 Character value
File Name (FEX) . . . . . > app/my report.fex

Output Format . . . . . WP_ DOC, WP
Output Queue . . . . . QPRINT Character value
Run Report with User ID . . . . *CURRENT Character value

Bottom
F3=Exit F4=Prompt F5=Refresh F12=Cancel F13=How to use this display
F24=More keys

MA A 05/037
I902 - Session successfully started
```

Method: DB2 Web Query Spreadsheet Client

Output types: Simple reports

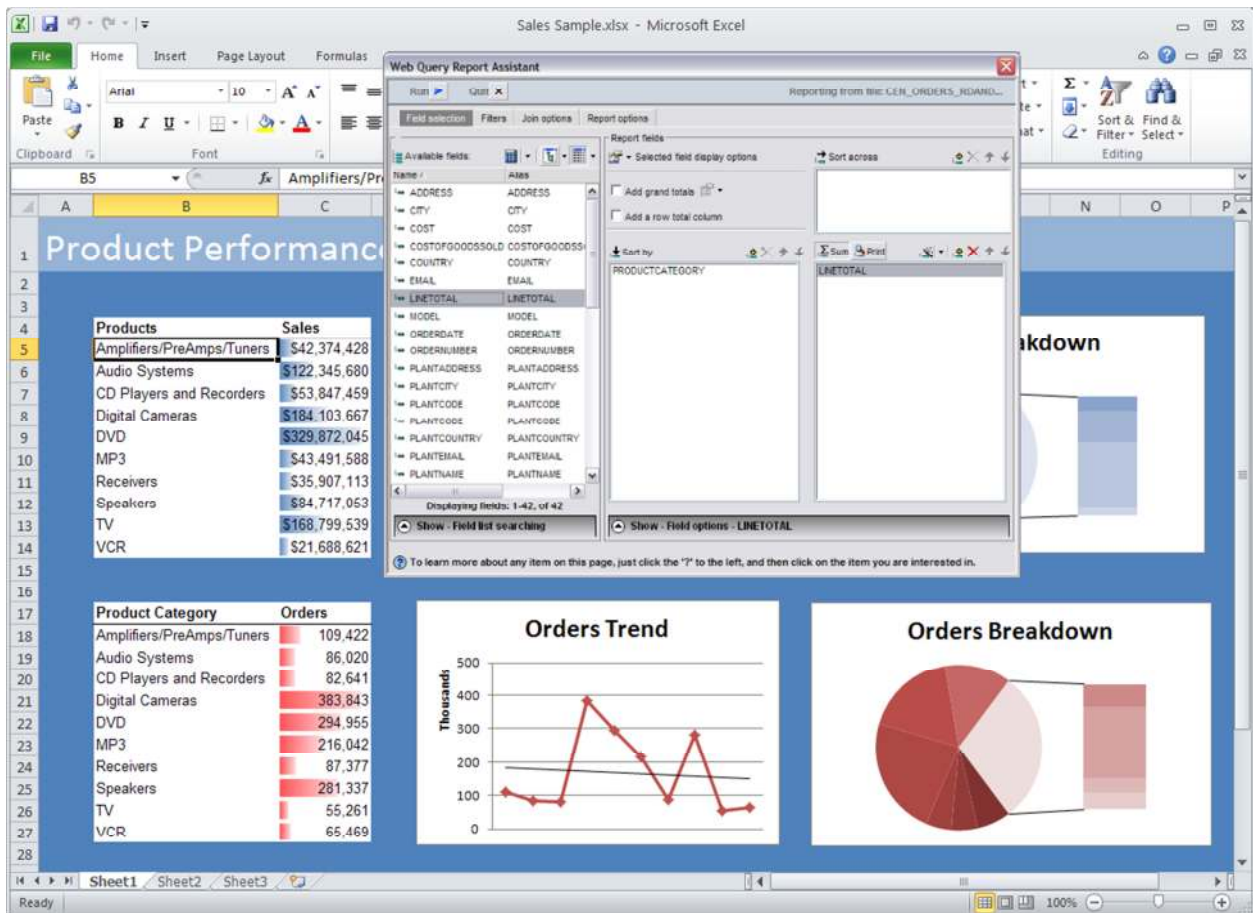
Output formats: Excel

Input Interface: Excel

Output Interface: Excel

Required items: Base DB2 Web Query version 1.1.1 and higher, Spreadsheet Client (5733QU2 Option 6)

Notes: Allows users to work directly in Excel without a web browser. Provides additional features like automatic data refresh and several data protection mechanisms to ensure data security if the Excel file is released. Supports Excel 2002 and higher.



Method: DB2 Web Query Report Broker

Output types: Simple reports, simple graphs, composite documents

Output formats: HTML, AHTML¹, PDF, Excel, PS

Input Interface: Web browser

Output Interface: Email, printer, or DB2 Web Query website

Required items: Base DB2 Web Query version 1.1.1 and higher, DB2 Web Query Report Broker (5733QU3)

Notes: Includes its own scheduler. Becomes very powerful to email Active Reports to end users.

Recipients of emails do not have to be licensed DB2 Web Query users, just the person making the schedule does. Parameters must be set when the schedule is set, not at run time.

Screenshot of the 'Schedule for PP1_PDF' configuration window in Windows Internet Explorer. The window title is 'Schedule for PP1_PDF - Windows Internet Explorer'. The browser's address bar shows 'Save', 'Run', 'Log', 'Help', and 'Close' buttons. The main content area is titled 'Description' and contains the following fields and options:

- Description: * Schedule for Sales Report
- Frequency: [icon]
- Task: [icon]
- Distribution: [icon]
- Notification: [icon]
- Advanced: [icon]
- Distribute report by: Email (dropdown)
- Distribution List: * DB2 (dropdown)
- From: Report Broker
- Reply Address: * iBroker@us.ibm.com
- Subject: Schedule for Sales Report
- Send Report as an Attachment
- Message: Please see the sales report attached
- Add Reports to Zip File
- Zip File Name: * sales_report.zip

Method: DB2 Web Query Report Broker - RUNBRSCHEd CL command

Output types: Simple reports, simple graphs, composite documents

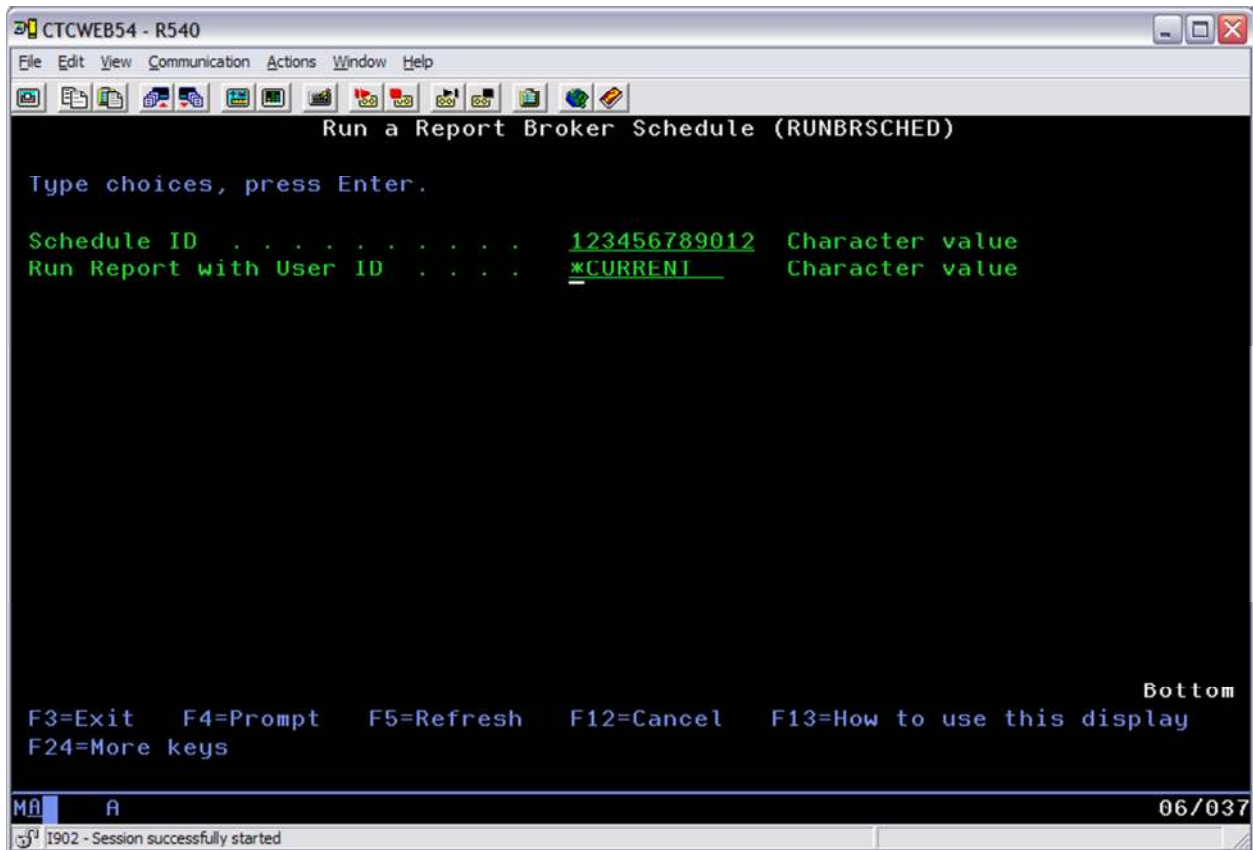
Output formats: HTML, AHTML¹, PDF, Excel, PS

Input Interface: Green screen to web browser set schedule

Interface: Email, printer, or website

Required items: Base DB2 Web Query version 1.1.1 and higher, DB2 Web Query Report Broker (5733QU3)

Notes: Allows a Report Broker schedule to be instantly sent. Cannot pass in parameters on the fly but can set multiple schedules with different combinations of parameters. Can be used to trigger a report on an event basis.



```
CTCWEB54 - R540
File Edit View Communication Actions Window Help
Run a Report Broker Schedule (RUNBRSCHEd)

Type choices, press Enter.

Schedule ID . . . . . 123456789012 Character value
Run Report with User ID . . . . . *CURRENT_ Character value

Bottom
F3=Exit F4=Prompt F5=Refresh F12=Cancel F13=How to use this display
F24=More keys

MA A 06/037
I902 - Session successfully started
```

Method: DB2 Web Query SDK

Output types: Simple reports, simple graphs, composite documents

Output formats: HTML, AHTML¹, PDF, Excel, PS, Text, Tab delimited, XML

Input Interface: Any language that supports web services (application and/or portal integration)

Output Interface: Web browser, PC application, physical file, spool file, and other locations the calling application can store the output (i.e. Local PC or file server)

Required items: Base DB2 Web Query version 1.1.1 and higher, Run Time User Enablement (5733QU2 Option 4), DB2 Web Query SDK (5733QU4), program of some sort to call the APIs

Notes: The SDK provides just access to the APIs, no actual code. Customer must write code to use the APIs to get use of this feature. Integration options are almost endless since APIs are provided as SOAP web services. Output is returned to the application and can have anything done with it that the language allows.

Web Query SDK Demo

Content

Show: Top 10

Dimension: Plant

Measure: Number of Employees

Filter

Plant: All, Boston, Dallas, Los Angeles

Output

HTML PDF

Excel Graph

AHTML

Run Close

Reports

Domain: Default Domain

Folder: group1

Report: test

Parameters

Deferred

Managed Reporting

Prompt	Name	Value
COUNTRY	COUNTRY	

Run

Highest 10 Plant With Respect to Number of Employees

From MR Environment

RANK	Plant	Number of Employees	% Number of Employees
1	STL	6.0	4.0
2	SFA	14.0	9.3
3	ORL	30.0	19.9
4	LA	68.0	38.4
5	DAL	25.0	16.6
6	BOS	18.0	11.9
TOTAL		151.0	100.0

Method: DB2 Web Query Integration Toolkit Extension

Output types: Simple reports, simple graphs, composite documents

Output formats: HTML, AHTML¹, PDF, Excel, PS, Text, Tab delimited, XML

Input Interface: Web browser (URI level access)

Output Interface: Web browser, physical file, spool file

Required items: Base DB2 Web Query version 1.1.1 and higher, Run Time User Enablement (5733QU2 Option 4), DB2 Web Query SDK (5733QU4)

Notes: This extension provides a middleware layer on top of the SDK that provides URL level access to reports. This requires no additional programming or code. Can be integrated into existing sites with IFRAMES or embedded anywhere a web page can be.

Century Electronics Sales Force

Sell! Sell! Sell!

Sales Force Home

WELCOME CENTURY ELECTRONICS SALES FORCE

Your YTD Sales Revenue

Year To Date Sales

Sales Rep: Roger Iddles

PROD TYPE	REV	CGS	GP	GPM
Audio	\$ 3,008,659.00	1584990.00	1,421,669.00	47.28%
Camcorders	3,432,817.00	2603340.00	829,477.00	24.16%
Cameras	1,676,876.00	1187690.00	489,186.00	29.17%
Office	208,372.00	118920.00	89,452.00	42.93%
Video	5,341,933.00	4272110.00	1,069,823.00	20.03%
TOTAL	\$ 13,666,657.00	9767050.00	3,899,607.00	28.53%

News and Links

Links

- ▶ SOA Toolkit Navigation
- ▶ DB2 Web Query Homepage
- ▶ DB2 Web Query Forum
- ▶ Reports IBM!

Check out DB2 Web Query!
It is awesome!

Questions?
Contact [Tyler Even](#)

Your Top Products

RANK	Product Name	Revenue
1	Digital8 Easycam Camcorder 14x Power Zoom	2977.00
2	3-Way Speaker Pair	2988.00
3	Digital8 Easycam Camcorder 22x Power Zoom	3497.00
4	PA4000 Stereo & Surround Power Amplifier	3887.00

Sales Break Down

Canada

Quantity

- Audio
- Camcorders
- Cameras
- Office
- Video

Downloads

Latest Sales Sheets

- ▶ [Download Excel Sales Report](#)

Century Electronics!

Making high quality products since...

- ▶ [Read more ...](#)

Design by [t234_info](#) | [W3C XHTML 1.0](#) | [W3C CSS 2.0](#)

Method: DB2 Web Query 5250 Report Extension – RUNWQFEX CL command

Output types: Simple reports, simple graphs, composite documents

Output formats: HTML, AHTML¹, PDF, Excel, PS, Text, Tab delimited, XML

Input Interface: Green screen

Output Interface: Email, FTP, IFS, physical file, spool file

Required items: Base DB2 Web Query version 1.1.1 and higher, Run Time User Enablement (5733QU2 Option 4)

Notes: Does not include a job scheduler but customer can put CL into any existing scheduler. Does not require purchase of the SDK. Parameters are supported on the command line and can be changed on each call. Handles advanced, styled output formats.

```
CTCWEB54 - R540
File Edit View Communication Actions Window Help
Run DB2 Web Query Report (RUNWQFEX)

Type choices, press Enter.

WQ Validation List . . . . . > RDANDREW      Character value
Domain name . . . . . > rdandrew/rdandrew.htm
Folder . . . . . > Hmyfolder1234
Report . . . . . > app/my report.fex

Additional parameters . . . . . > '&COUNTRY=United States'

Output . . . . . > *EMAIL      *FTP, *EMAIL, *FILE
Recipient . . . . . > robert.andrews@us.ibm.com

Sender . . . . . > qu2@us.ibm.com

More...
F3=Exit  F4=Prompt  F5=Refresh  F12=Cancel  F13=How to use this display
F24=More keys

M A                                05/037
I902 - Session successfully started
```

Footnotes: 1: Only if Active Reports is purchased and installed (5733QU2 Option 1)
2: Only if OLAP is purchased and installed (5733QU2 Option2) – OLAP requires the Developer Workbench (5733QU2 Option 3) to be fully functional