

WebSphere Migration Strategy

Choose the best fit App Server and environment

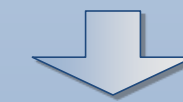
Traditional WebSphere



Steps for a traditional WebSphere Migration

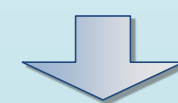
Traditional WAS or Liberty: how to choose?

Liberty



Information on migrating to Liberty

Cloud



Information on migrating to the cloud

WebSphere Migration

Planning your Migration

Check Pre-reqs for your planned target version to ensure compatibility (click on buttons below)

[WebSphere specific Pre-Req's](#)

[WebSphere Support Statement](#)

Task 1 – Determine your migration path

Task 2 – Preparing for your migration

Executing your Migration

Task 1 – Installing the Chosen Product Version

Task 2a– Migrating to 7.0

Task 2b– Migrating to 8.0

Task 2c– Migrating to 8.5

Task 2d– Migrating to 9.0

Supplemental Info

[Useful Links](#)

[Back](#)

Planning

Task 1 – Determine Your Migration Path

Your Current Version Product Documentation	Target Version New Features	Target Version Planning Guide	Target Version Potential Impacts
7.0	What's new v8.0	v8.0 Planning Guide	What's Changed 8.0
	What's new v8.5	v8.5 Planning Guide	What's Changed 8.5
	What's new v9.0	V9.0 Planning Guide	What's Changed 9.0
8.0	What's new v8.5	v8.5 Planning Guide	What's Changed 8.5
	What's new v9.0	V9.0 Planning Guide	What's Changed 9.0
8.5	What's new v9.0	V9.0 Planning Guide	What's Changed 9.0

Special considerations:

Migration from 6.0: If your current version of WebSphere Application Server is 6.0 and you wish to migrate to 8.5, you must first migrate to 7.0 or 8.0, then migrate from 7.0 or 8.0 to 8.5.

Migration from 6.1: If your current version of WebSphere Application Server is 6.1 and you wish to migrate to 9.0, you must first migrate to 8.5, then migrate from 8.5 to 9.0.

When choosing your target version take into account the features included in the new version and weigh up the benefits of migrating to the latest version to decrease how often a migration may be required.

When skipping versions (for example migrating from v7 to v8.5) ensure you look at the "What's New" for each release you skip to ensure you know all the new features you will gain.

[Handling certain out of memory conditions](#) when migrating, if you are migrating a large amount of applications

Take a full system backup of your source before beginning the migration

Back

The Liberty zero migration vision

Making the move to the Liberty Profile, Part 1

Making the move to the Liberty Profile, Part 2

Moving WebSphere and 3rd Party Applications

Moving Application Binaries

Configuration Scanning for migration

WebSphere Application Server – Migration Discovery Tool

Total Economic Impact of Migration From Open Source Application Servers to IBM WAS Liberty

Notes :

The Liberty product does not have a specific tool as traditional WebSphere has to migrate your configuration from one version to another. A combination of the tools listed above will assist you with moving your configurations and/or applications from WebSphere and/or 3rd Party products to a Liberty Installation.

Back

[WebSphere on Cloud “Total Cost of Ownership” Calculator](#)

[Calculate savings on the Cloud using IBM WebSphere](#)

[Choose the best fit App Server and environment](#)

[WAS Liberty in the cloud](#)

[Moving WebSphere and 3rd Party Applications](#)

[Moving Application Binaries](#)

[WebSphere Application Server v9 Update: On Premise and In the Cloud - video](#)

[WebSphere Application Server – Migration Discovery Tool](#)

[WebSphere Configuration Migration Tool for IBM Cloud - Overview](#)

[WebSphere Configuration Migration Tool for IBM Cloud - Download](#)

[Back](#)

Migration Type Considerations

Remote Migration	Local Migration
Source and target environments are on different machines. Not supported for some platforms, e.g. z/OS	Source and target environments are on the same machine.
Source environment remains up and running	Source environment may be down (if performing local migration without coexistence; local migration without coexistence leaves the source environment disabled unless parameter is used to not disable source)
Can migrate to any hardware or computer	Must be on the same computer
Minimal to no resource conflict considerations	Must have resources for 2 WebSphere systems on 1 machine
Can keep standard directory structure	Directory structure changes/ considerations
Must carefully plan OS and accounts security	Fewer OS security considerations
Migration Wizard is not available, command line only.	Migration Wizard available

[More information about planning for a migration](#)

Target Version

[v7.0
Preparing for Migration](#)

[v8.0
Preparing for Migration](#)

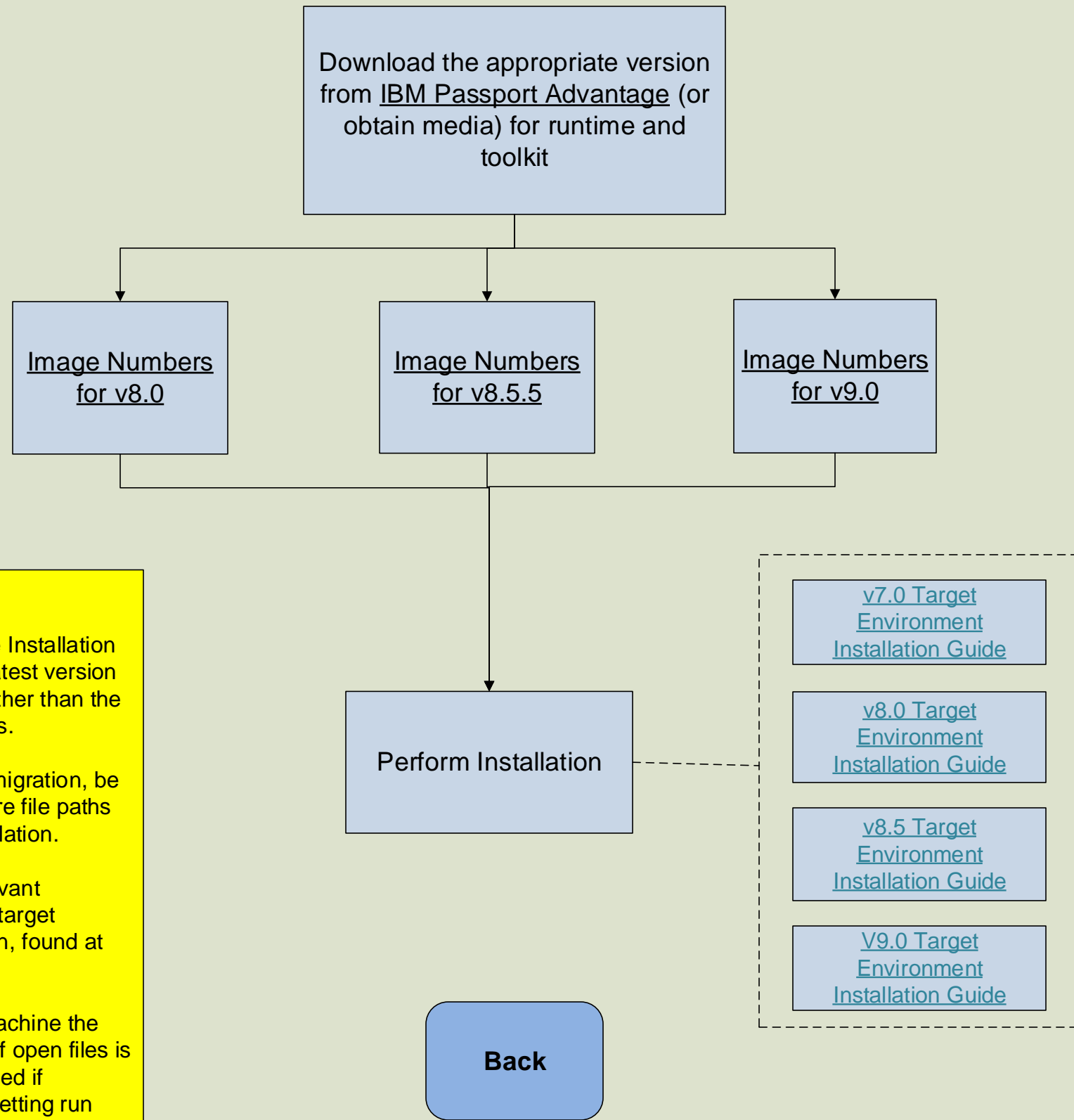
[v8.5
Preparing for Migration](#)

[v9.0
Preparing for Migration](#)

General Migration Considerations

	V7.0	V8.0	V8.5	V9.0
Support Remaining	Low	Low	Medium	Long
Source Version	v6.0 v6.1	v6.0 v6.1 v7.0	v6.1 v7.0 v8.0	v7.0 v8.0 v8.5
Migration Wizard Available	Local Migration	Local Migration	Local Migration	Local Migration

[Back](#)



Notes

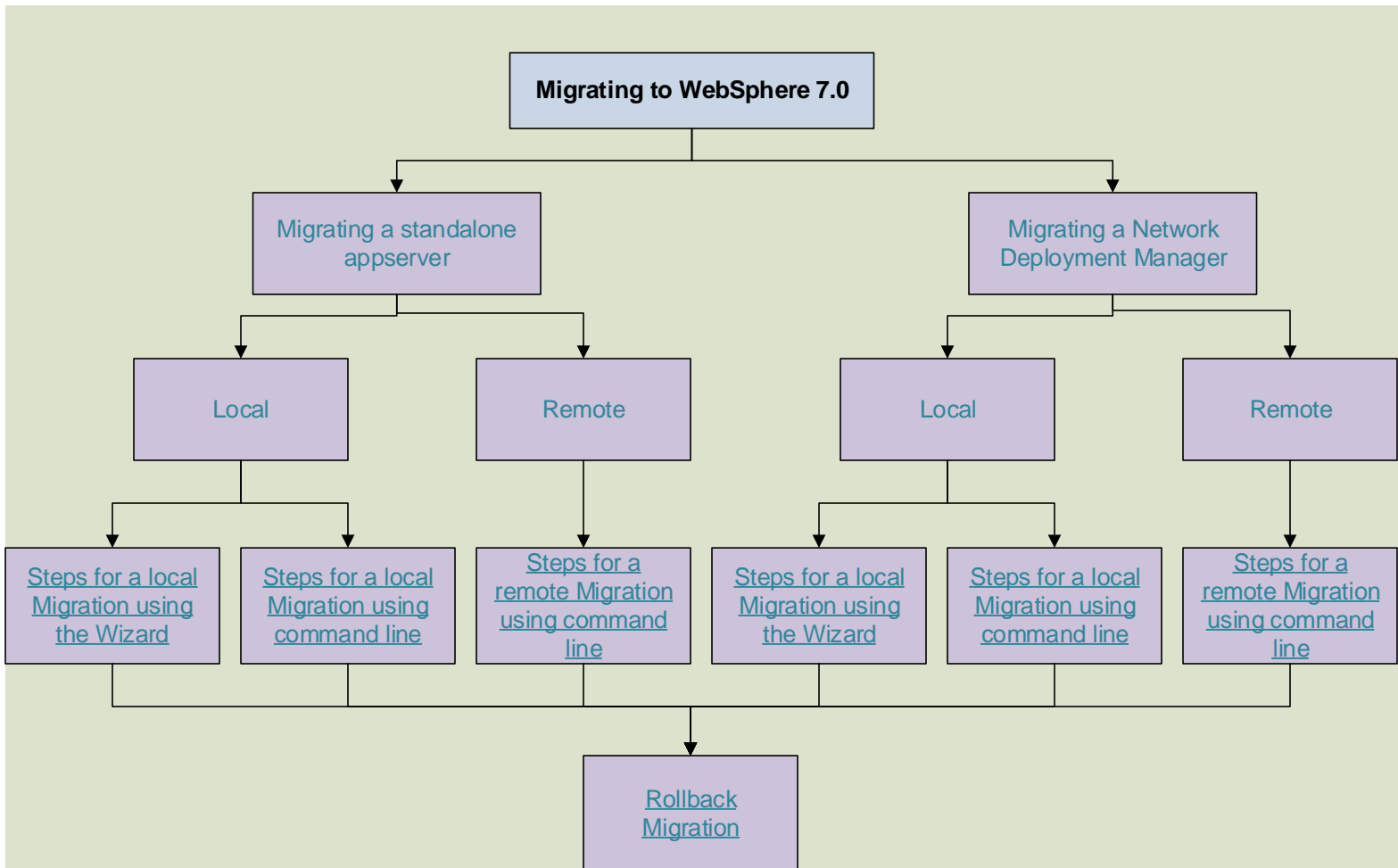
v8.0,v8.5 and v9.0 require the Installation Manager to install. Use the latest version of the Installation Manager rather than the one delivered with the binaries.

If you are performing a local migration, be sure to change the WebSphere file paths from the defaults during installation.

Ensure that you follow all relevant instructions for setting up the target environment for your migration, found at the links to the left.

Verify that on a Unix target machine the ulimit setting for the number of open files is set to 10000 or higher, unlimited if possible. To see the current setting run from the command line
ulimit -a

Task 2a – Migration to 7.0



Notes :

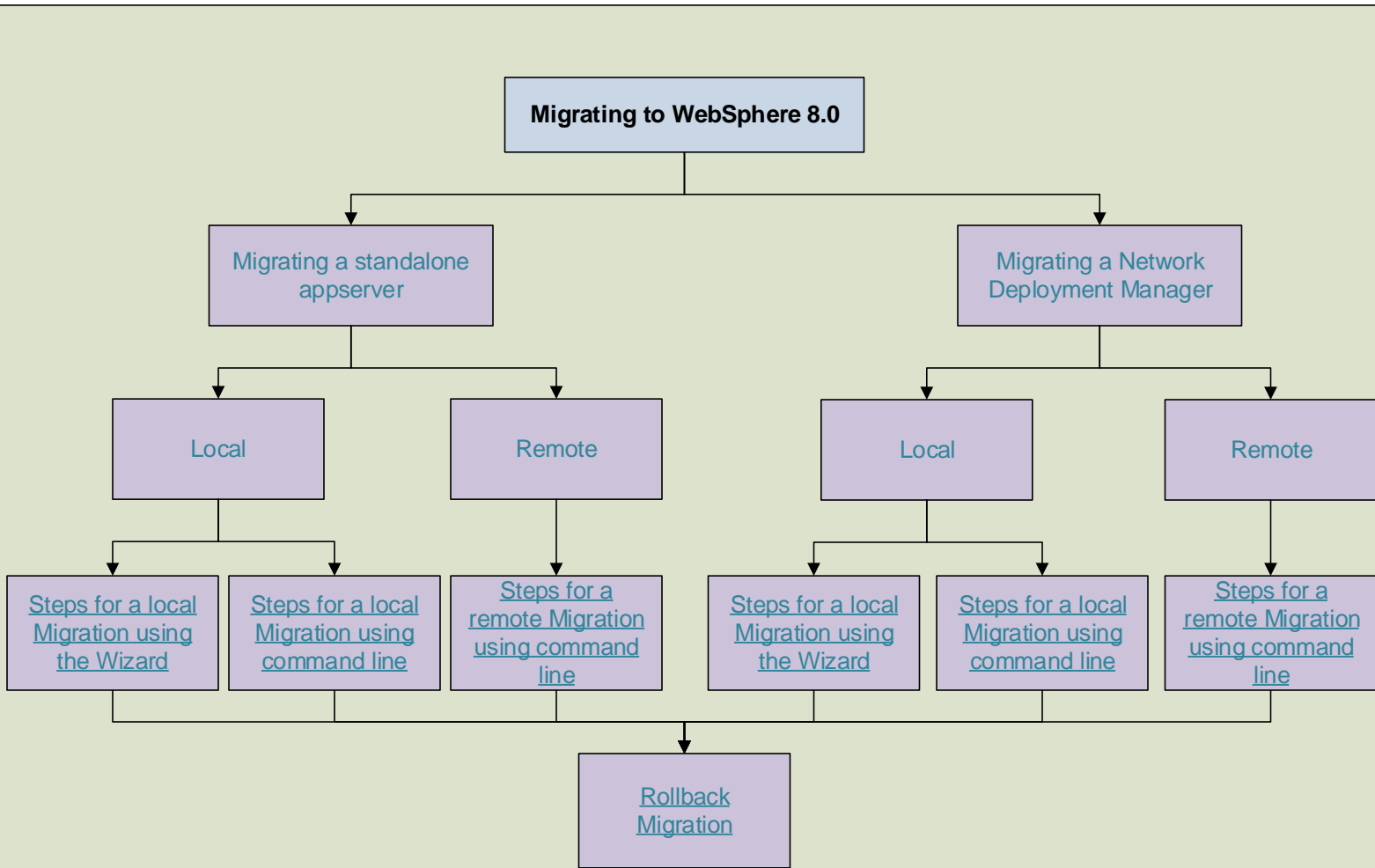
Local means that the source and target are on the same machine. Remote means you are changing your target machine.

Ensure that you follow the directions relevant to your environment and have reviewed all applicable IBM Knowledge Center documentation before beginning migration.

Upgrade your target to the latest version of WebSphere to ensure all known migration issues reported previously are resolved.

Always run with trace enabled to avoid repeat migrations if issues occur

Task 2b – Migrating to 8.0



Notes :

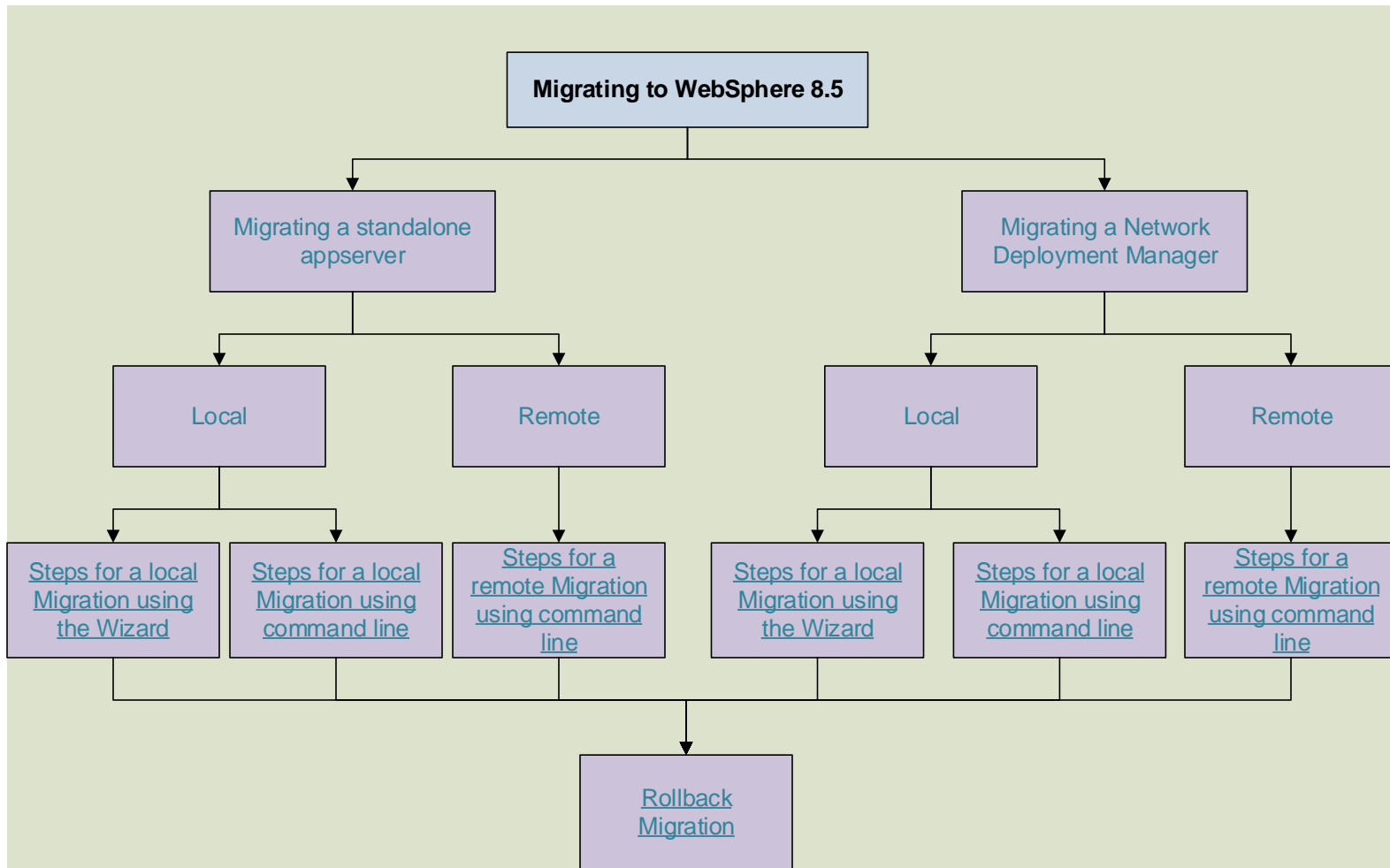
Local means that the source and target are on the same machine. Remote means you are changing your target machine.

Ensure that you follow the directions relevant to your environment and have reviewed all applicable IBM Knowledge Center documentation before beginning migration.

Upgrade your target to the latest version of WebSphere to ensure all known migration issues reported previously are resolved.

Always run with trace enabled to avoid repeat migrations if issues occur

Task 2c – Migration to 8.5



Notes :

Local means that the source and target are on the same machine. Remote means you are changing your target machine.

Ensure that you follow the directions relevant to your environment and have reviewed all applicable IBM Knowledge Center documentation before beginning migration.

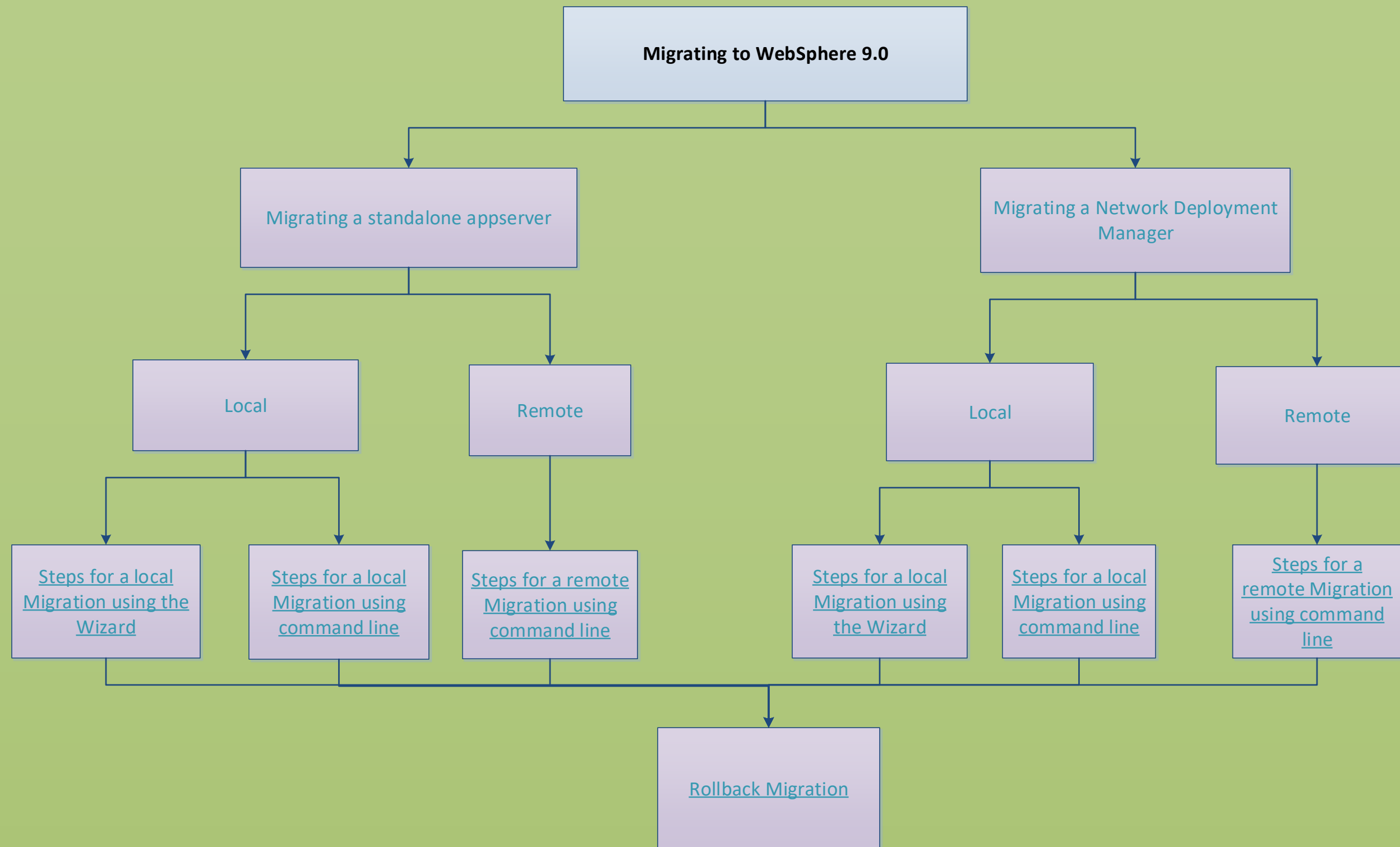
Upgrade your target to the latest version of WebSphere to ensure all known migration issues reported previously are resolved.

Always run with trace enabled to avoid repeat migrations if issues occur

Useful Links

WebSphere v6.1 Documentation
WebSphere v7.0 Documentation
WebSphere v8.0 Documentation
WebSphere v8.5 Documentation
WebSphere v9.0 Documentation
Migrating Web Server Configuration 7.0
Migrating Web Server Configuration 8.0
Migrating Web Server Configuration 8.5
Migrating Web Server Configuration 9.0
Need some High Level Training for your team on Migration?
Trouble Shooting : Migration MustGather to send to WebSphere Level 2 Support
Moving Applications from non-IBM Platforms
Pricing
WebSphere vs Web Logic Cost Calculator
WebSphere vs Jboss Cost Calculator
WebSphere Application Server Migration Toolkit
Migration Tools including UrbanCode Deploy: WebSphere Application Server – Deployment

[BACK](#)



Notes :

Clone migration: Migrate and keep your old profile functional, **ZERO DOWN TIME!!**

You can now migrate your configuration to Version 9.0 and continue to use your previous version profile, which is known as a clone migration. Clone migrations follow the standard migration procedures, except that you specify the **-clone** parameter when you run the WASPostUpgrade command.

For clone migrations, the new profile configuration must use unique port numbers so that the now coexisting new and old configurations do not have port conflicts.

Local means that the source and target are on the same machine. Remote means you are changing your target machine.

Ensure that you follow the directions relevant to your environment and have reviewed all applicable IBM Knowledge Center documentation before beginning migration.

Upgrade your target to the latest version of WebSphere to ensure all known migration issues reported previously are resolved.

Always run with trace enabled to avoid repeat migrations if issues occur