



IBM Software Group

WebSphere Data Interchange[®] 3.3 Installation / Migration for Multiplatform

Ricky Holcomb
WDI / WPG L2 Support



WebSphere[®] Support Technical Exchange



Agenda

- **Requirements**
 - **Software**
 - **Hardware**
- **WDI 3.3 installation for Multiplatform**
- **Migrating WDI 3.2 to 3.3**
- **Known Issues / Workarounds**
- **Questions and Answers**

Software Requirements



Software Requirements

➤ WDI 3.3 Client requirements

- Windows 2000® / Windows XP Professional®
- DB2® Server Version 8.2 or DB2 Connect V8.2

Note: Support for DB2 v9 was added per techdoc **#1293640**

Optional software:

- WebSphere® MQ, V6.0
- GXS Expedite for Windows® V4.6.2

Software Requirements -Continued

➤ WDI 3.3 Server requirements

- Windows 2000® / Windows XP professional®
- AIX® Version 5.2 or higher
- DB2 Server Version 8.2

Note: Support for DB2 v9 was added per technote **#1293640**

Optional software:

- WebSphere MQ, V6.0
- GXS Expedite for Windows V4.6.2 for “Windows installations”
- GXS Expedite Base/AIX for RS/6000 V4.5.1 for “AIX installations”

Hardware Requirements



Hardware Requirements

➤ WDI 3.3 Client requirements

- Intel® Pentium® IV processor at 1.8 GHz, or faster
- 1024 MB memory
- CD-ROM Drive for installing the distributed material.
- Storage device with a minimum of 20 GB free space
- Network hardware and communication connection

Hardware Requirements – Continued

➤ WDI 3.3 Server requirements

Windows Servers:

- Intel Pentium IV processor at 1.8 GHz, or faster
- 1024 MB memory
- CD-ROM Drive for installing the distributed material.
- Storage device with a minimum of 20 GB free space
- Network hardware and communication connection

Hardware Requirements - Continued

AIX Servers:

- Any server capable of running the AIX 5.2 or higher operating system
- CD-ROM Drive for installing the distributed material
- Network hardware and communication connection

Install



Install

WDI 3.3 Client installation and setup

- WDI 3.3 Client Installation wizard similar to the WDI 3.2 Client installation wizard, with a Typical, Attention and Custom installation available.
- WDI 3.2 Client and WDI 3.3 Client installation may co-exist on the same system.

Default path information:

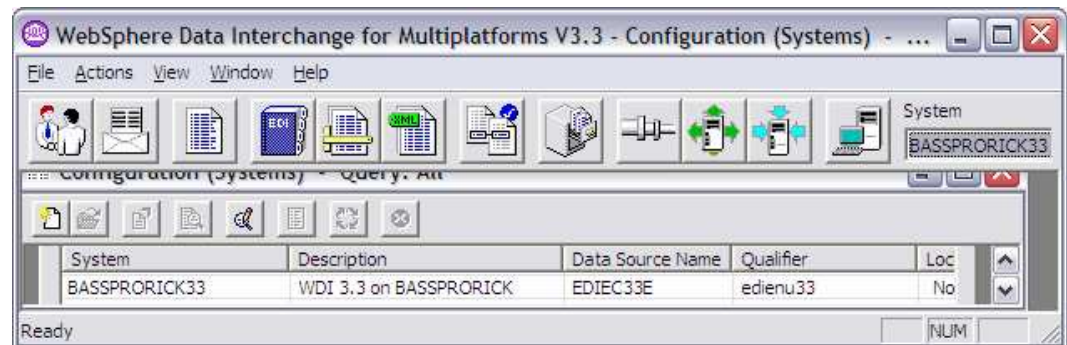
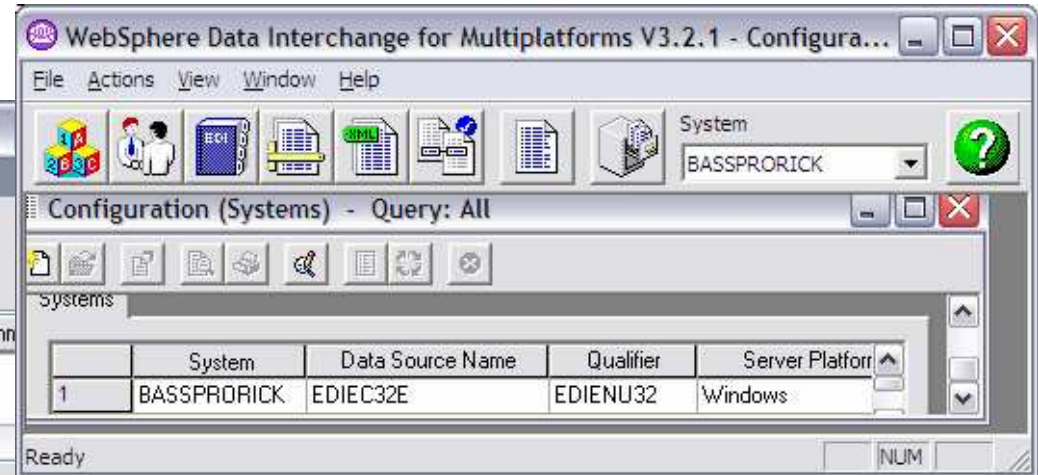
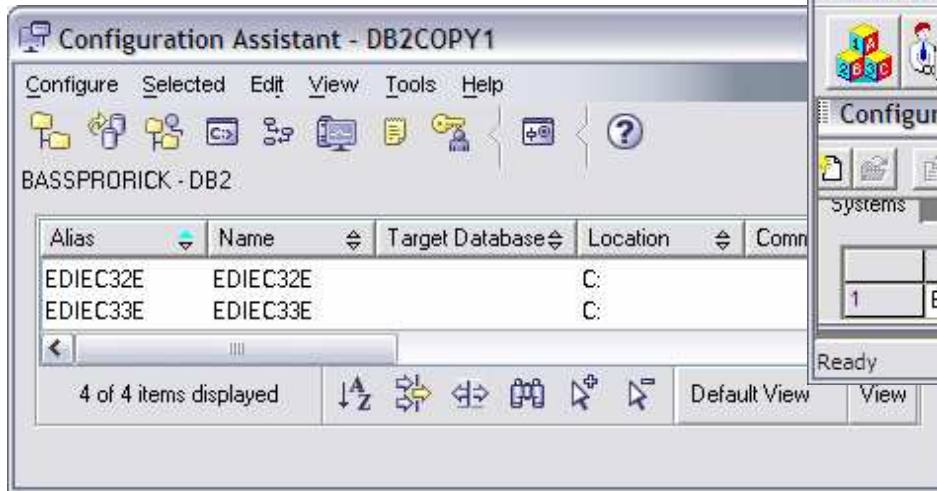
WDI Client 3.2: C:\Program Files\IBM\WDI Client V3.2

WDI Client 3.3 C:\Program Files\IBM\WDI Client V3.3

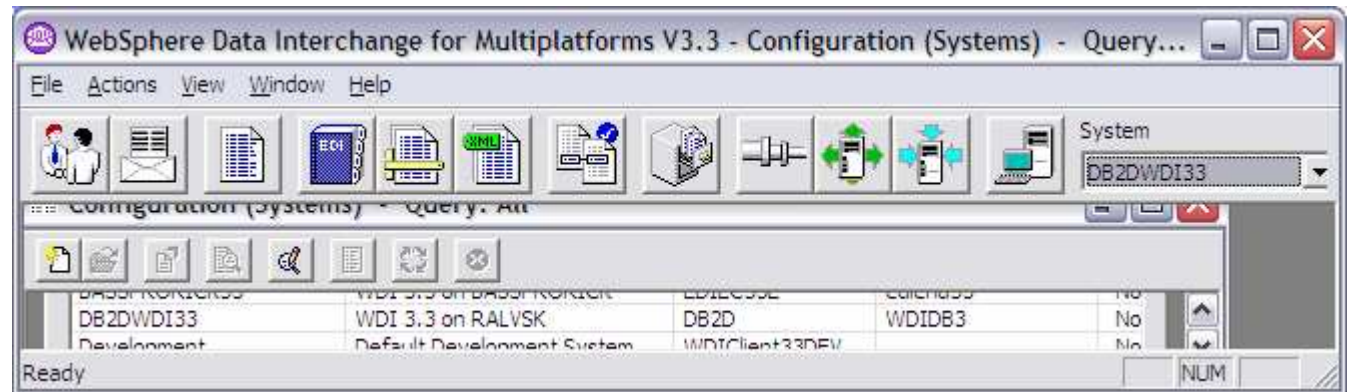
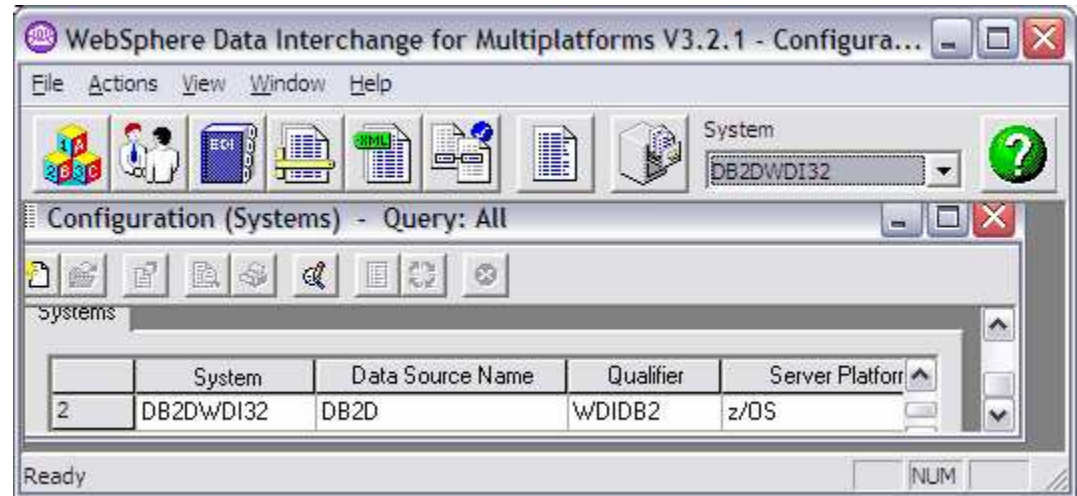
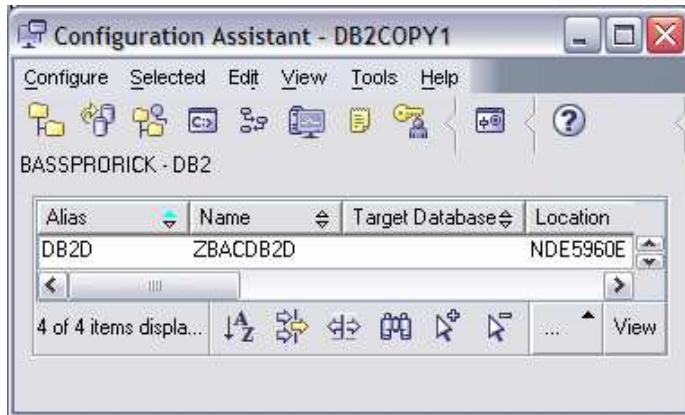
Install - Continued

- WDI 3.3 Client and WDI 3.2 Client system configuration is also the same for registering and connecting to local and remote database servers.
- WDI 3.3 can not access a WDI 3.2 database, nor can the WDI 3.2 client access a WDI 3.3 database

Install - Continued



Install - Continued



Install - continued

WDI 3.3 Server installation / setup for Windows

- WDI 3.3 Sever Installation wizard similar to the WDI 3.2 Server installation wizard.
- WDI 3.2 Sever and WDI 3.3 Server installation may exist on the same Windows system with configuration switching on PATH and DICONFIGDIR variable information.

Default install path information for Windows:

WDI Server 3.2: C:\WDIServer32

WDI Server 3.3 C:\Program Files\IBM\WDIServer\v3.3

Install - continued

Note: Only one version can be running at any one time, as Windows will use the last variable installed for the path specified. The variable for “PATH” and “DICONFIGDIR” must be edited prior to switching versions.

If you wish to have 3.2 and 3.3 versions of WDI Server installed on the same Windows system, then you may want to change the WDI 3.3 installation path to C:\WDIServer33. This will allow you to quickly edit the “PATH” and “DICONFIGDIR” variable in Windows, by editing a single character for each variable.

```
PATH=C:\WDIServer32\Bin  
DICONFIGDIR=C:\WDIServer32\Bin
```

```
PATH=C:\WDIServer33\Bin  
DICONFIGDIR=C:\WDIServer33\Bin
```


Install - continued

WDI 3.3 Server installation / setup for AIX

- WDI 3.3 Sever Install wizard for AIX is also similar to the WDI 3.2 Server install wizard.
- WDI 3.2 Server and WDI 3.3 Server installation may also exist on the same AIX system, however the correct path information must be called and only one instance can be running at any one time.

Default install path information for AIX systems:

WDI Server 3.2:	/usr/wdi/Dlv32
WDI Server 3.3	/opt/ibm/WDIServer/v3.3

Install - continued

- Note install Path

The following lines may be added to the users .profile

```
#. /usr/wdi/D1v32/samples/setdienv.sh
```

```
#. /opt/ibm/WDIServer/v3.3/samples/setdienv.sh
```

- The setdienv.sh script file which ships as part of WDI samples, and allows you to quickly set the path information for the WDI installation for the users as you can quickly uncomment the version of WDI which you wish to start from the users .profile.
- Another option would be to have to different users defined, one for WDI 3.2 and WDI 3.3. Each pointing the correct setdienv.sh script file for the version you wish to start.

Migrating



Migrating

- WDI 3.2 maps, trading partners, profiles, and most other database objects can be migrated by exporting the objects from your existing WDI 3.2 database, then importing them into your WDI 3.3 database.

Three ways which this can be accomplished:

- I. Export and import individual objects using the WDI 3.2 Client
- II. Batch commands using ediservr PERFORM EXPORT and PERFORM IMPORT.
- III. Release migration feature of the WDI Client 3.2 / 3.3.



Migrating - Continued

Note: Certain operational data including Transaction Store, Management Reporting, and SAP Status data cannot be imported or exported. Special programs are included with WDI 3.3 to migrate this data from a WDI 3.2 database to WDI 3.3

Restrictions on the use of these programs

- Only support migration from WDI 3.2 database to WDI 3.3 database. Migration of Transaction Store, Management Reporting, and SAP status data from WDI 3.1 on z/OS is not supported.
- Only support migration to the same type of operating system. Example, you can migrate WDI 3.2 database on Windows to WDI 3.3 database on Windows, but not from 3.2 on Windows to 3.3 on AIX.
- WDI 3.2 system that you are migrating from must have CSD7 or later installed.

Migrating - Continued

It is intended to replace all existing Transaction (Document) Store, Management Reporting, and SAP status information in the new database.

Although it is possible to modify the scripts to insert records into the WDI 3.3 database without deleting the existing records first, this should only be used in special situations, and is generally not recommended.

If the migrated records conflict with records that were generated by WDI 3.3 processing, it can put the database into an invalid state and cause problems during translation and/or reporting functions. To avoid this situation, the script to load the data will use the "clean" option to delete all existing records from the WDI 3.3 table before it loads the migrated data.



Migrating - Continued

- Transaction Store tables, and Management Reporting tables should be migrate as a set. You should not try to migrate individual tables, as migrating individual tables can put the database into an invalid state, and may later cause problems during translation and/or reporting functions.
- Migration steps can be done immediately after you create your WDI 3.3 database and load the default data, or they can be done later after you have done additional setup and testing with WDI 3.3.
- If you do the migration after you have done additional testing with WDI 3.3, remember that any existing WDI 3.3 Transaction Store, Management Reporting, and SAP status data will be deleted during the migration of the WDI 3.2 data.

Maps, profiles, etc. are not affected by the migration steps.



Migrating - Continued

- Steps for migration are documented in the “WebSphere Data Interchange Administration and Security Guide” on page 9

“Chapter 1. About WebSphere Data Interchange”
“Server installation and setup”
“Migrating data from previous releases”



Migrating - Continued

Other considerations before migration of 3.2 databases

- Insure all transactions and status codes are complete
- Purge and Remove all nonessential data for Transaction Store and Management reporting tables
- Final export and import of all data from a 3.2 system to a 3.3 system should be done at the same time, so that information such as the Trading Partner Control Numbers and Transaction Store data remains in sync

Know Issues / Workarounds



Know Issues / Workarounds

- If you are attempting a release migrating from WDI 3.2 using WDI Client, and created your WDI 3.2 server database after CSD16 was installed, you may see the following error during the Release Migration processing:

11041 - A database error occurred while attempting to open table "EDIENU32.EDIPSCR". ODBC return code is: -1. Description: SQL0206N "TRACKNM" is not valid in the context where it is used.

SQLSTATE=42703. Internal Codes: State:S0022,Native:-206, Origin:[IBM][CLI Driver][DB2/NT]

Know Issues / Workarounds - Continued

Error is due to the EDIPSCR table missing several new columns, e.g. "TRACKNM", which is the first of several columns that are missing.

Resolution:

Run the CSD16.ddl from the WDI 3.2 ddl directory and attempt to run the release migration again.

Windows:

```
C:\WDIServer32\ddl> db2 -tf csd16.ddl -l csd16.log
```

AIX:

```
/usr/wdi/Dlv32/ddl> db2 -tf csd16.ddl -l csd16.log
```

Know Issues / Workarounds - Continued

TECHDOC #1293640

<http://www.ibm.com/support/docview.wss?rs=DB540&q1=3.3&uid=swg21293640&loc>

- **Question:** Can DB2 Universal Database Version 9 be used with WebSphere Data Interchange Version 3.3.
- **Answer:** Yes, per the publish date for techdoc #1293640 WebSphere Data Interchange Version 3.3 formalizes support status for interaction with *DB2 Universal Database Workgroup Edition Version 9 with open database connectivity (ODBC)*. WDI and DB2 v9 have been tested together on Windows and AIX with WDI 3.3 in a lab environment.

Know Issues / Workarounds - Continued

TECHDOC #1293640 – continued

<http://www.ibm.com/support/docview.wss?rs=DB540&q1=3.3&uid=swg21293640&loc>

- *During installation on Open Systems, the "createdb.ddl" script will show the following error:*

*SQL5153N The update cannot be completed because the following relationship would be violated: "softmax <= 100 * logprimary".*

Know Issues / Workarounds - Continued

TECHDOC #1279263

<http://www.ibm.com/support/docview.wss?rs=DB540&q1=3.3&uid=swg21279263&loc>

Issue:

- WDI 3.2 triggering, not working with MQ 6.0, or when migrating WDI 3.2 to 3.3 on AIX® 64 bit operating system

Cause:

WDI 3.2 and 3.3 are 32-bit applications . They can not use the default 64 bit libraries installed with WMQ 6.0 when installed on the AIX 64 bit kernel. In previous versions of MQ the installation process creates symbolic links from files located in /usr/mqm/lib to the /usr/lib directory. The WebSphere MQ 6.0 install procedure instructs users to remove these symbolic links (Soft Links) in /usr/lib.

Know Issues / Workarounds - Continued

TECHDOC #1279263 - continued

<http://www.ibm.com/support/docview.wss?rs=DB540&q1=3.3&uid=swg21279263&loc>

Error Message:

Browse message ended with reason code = 0
WDIAdapter set Trigger Control Off
Terminating the translator...
WDI Translator Terminated, API return code = 0
Unable to open module: edimqs,
Error: 2/A file or directory in the path name does not exist.
Unable to open module: edimqs,
Error: 2/A file or directory in the path name does not exist.

Know Issues / Workarounds - Continued

TECHDOC #1294717

<http://www.ibm.com/support/docview.wss?rs=DB540&q1=3.3&uid=swg21294717&loc>

Question:

Is WebSphere Data Interchange Version 3.3 supported on Windows Vista?

- **Answer:** Yes, per the publish date for techdoc #1294717 WebSphere Data Interchange formalizes support status for interaction with *Windows Vista (Business, Enterprise, and Ultimate editions)*. WDI has been tested on Windows Vista with WDI 3.3 in a lab environment.



Know Issues / Workarounds - Continued

TECHDOC #1294717 - continued

<http://www.ibm.com/support/docview.wss?rs=DB540&q1=3.3&uid=swg21294717&loc>

- *During modification of files in the Program Files directory, such as the WDI properties file, a warning message appears and asks for confirmation of the update. This can be overridden by changing some machines settings, disabling some security features. It is not necessary to disable the settings, and the message is not displayed during WDI translations.*

This warning message is only an operating system request to confirm that the user wants to allow the file to be modified. WDI Support neither requires nor recommends disabling the settings. It is a matter of installation discretion.



Other Relative Information

WebSphere Data Interchange has made some changes to the terminology used when referencing Corrective Service Disk (CSD) for WDI Server and Fix Packs for WDI Client. WDI 3.3 Server is now referred to as a “Server Fix Pack” and WDI Client is referred to as a “Client Fix Pack”

Current WDI Client 3.3 Fix Pack level:
Client Fix Pack 4

Current WDI Sever 3.3 Fix Pack level:
Server Fix Pack 1

Summary

- WDI is still a robust and easy installation.
- Minimal hardware requirement for operation.
- Support of new version operating systems and addition optional software levels.
- Easy to use migration path.
- Terminology change from “CSD” to Server Fix Pack

Additional WebSphere Product Resources

- Discover the latest trends in WebSphere Technology and implementation, participate in technically-focused briefings, webcasts and podcasts at:
<http://www.ibm.com/developerworks/websphere/community/>
- Learn about other upcoming webcasts, conferences and events:
http://www.ibm.com/software/websphere/events_1.html
- Join the Global WebSphere User Group Community: <http://www.websphere.org>
- Access key product show-me demos and tutorials by visiting IBM Education Assistant:
<http://www.ibm.com/software/info/education/assistant>
- View a Flash replay with step-by-step instructions for using the Electronic Service Request (ESR) tool for submitting problems electronically:
<http://www.ibm.com/software/websphere/support/d2w.html>
- Sign up to receive weekly technical My Notifications emails:
<http://www.ibm.com/software/support/einfo.html>

Questions and Answers

