

IBM i
7.2

*Systems management
Controlling system shutdown using a
power-handling program*



Note

Before using this information and the product it supports, read the information in [“Notices” on page 19.](#)

This document may contain references to Licensed Internal Code. Licensed Internal Code is Machine Code and is licensed to you under the terms of the IBM License Agreement for Machine Code.

© **Copyright International Business Machines Corporation 1998, 2014.**

US Government Users Restricted Rights – Use, duplication or disclosure restricted by GSA ADP Schedule Contract with IBM Corp.

Contents

- Controlling system shutdown using a power-handling program..... 1**
 - PDF file for Controlling system shutdown..... 1
 - Controlled shutdown concepts..... 1
 - Battery backup unit..... 1
 - Handling uninterruptible power supply conditions when no power-handling program exists..... 2
 - IPL considerations for uninterruptible power supply..... 2
 - Power-loss controlled shutdown..... 3
 - Power restore IPL system value (QPWRRSTIPL)..... 3
 - Uninterruptible power supply..... 4
 - Uninterruptible power supply delay time system value (QUPSDLYTIM)..... 4
 - Uninterruptible power supply message queue system value (QUPSMMSGQ)..... 7
 - Uninterruptible power supply messages..... 8
 - Weak battery condition signal from uninterruptible power supply..... 9
 - Enabling a power-handling program to control system activity during a power interruption..... 10
 - Implementing a power-handling program..... 11
 - Writing a power-handling program..... 12
 - Example: Power-handling CL program..... 14
 - Example: Testing a power-handling CL program..... 17
- Notices..... 19**
 - Programming interface information..... 20
 - Trademarks..... 20
 - Terms and conditions..... 21

Controlling system shutdown using a power-handling program

Power-handling programs can minimize interruptions during a power loss. You should use a power protection device, such as an uninterruptible power supply, with your power-handling program.

Power protection (for example, uninterruptible power supply) devices help provide energy to the system when utility power is temporarily interrupted. The energy that is provided helps prevent system functions from ending abnormally. The controlled shutdown mechanisms help the system shut down as smoothly as possible, minimizing adverse impacts on initial program load (IPL) time.

You can tailor the CL program examples to your specific system requirements, as well as test the power-handling program that you created.

Note: By using the code examples, you agree to the terms of the [Code license and disclaimer information](#).

PDF file for Controlling system shutdown using a power-handling program

You can view and print a PDF file of this information.


To view or download the PDF version of this document, select [Controlling system shutdown using a power-handling program](#) (about 320 KB).

Saving PDF files

To save a PDF on your workstation for viewing or printing:

1. Right-click the PDF link in your browser.
2. Click the option that saves the PDF locally.
3. Navigate to the directory in which you want to save the PDF.
4. Click **Save**.

Downloading Adobe Reader

You need Adobe Reader installed on your system to view or print these PDFs. You can download a free copy from the [Adobe Web site](http://www.adobe.com/products/acrobat/readstep.html) (www.adobe.com/products/acrobat/readstep.html) .

Controlled shutdown concepts

Before you use a power-handling program to control system shutdown, you may want to familiarize yourself with related concepts.

Battery backup unit

A *battery backup unit* provides a safety net for users who do not have an uninterruptible power supply or those with a failed uninterruptible power supply.

The battery backup unit provides 30 seconds of run time. If ac power is not restored within 30 seconds, the system immediately goes into a controlled shutdown.

Systems 620, 640, 650, 720, 730, 740, 830, SB1, SB2, SB3 are equipped with a battery backup unit.

Handling uninterruptible power supply conditions when no power-handling program exists

You might need to change some system values when you do not have a power-handling program. These are considerations when you do not have a power-handling program to handle controlled system shutdown.

You can specify that you do not have a power handling program by using the default for the QUPSMGQ, which is QSYSOPR. When you use the default, the system sends all power-related messages to QSYSOPR. You should set the QUPSDLYTIM to something other than *NOMAX.

Normally, you do not supply power to the workstation devices. When utility power is interrupted, the system remains active, but the workstation jobs typically end abnormally. If utility power is restored while the system is operating on the uninterruptible power supply, the system remains active and the workstation jobs can be restarted.

If the QUPSDLYTIM timer ends or the weak battery signal occurs, the system saves main storage and turns off. Select a value for QUPSDLYTIM that is appropriate for your uninterruptible power supply and your system size.

If the system is powered down while on uninterruptible power supply, the QPWRSTIPL determines whether an IPL is performed when utility power is restored. The default is to not perform the IPL.

Related concepts

[Enabling a power-handling program to control system activity during a power interruption](#)

System software support is essentially the same for both the battery feature and the uninterruptible power supply attachment.

[Uninterruptible power supply message queue system value \(QUPSMGQ\)](#)

The uninterruptible power supply message queue (QUPSMGQ) system value determines which message queues the power supply messages are sent to.

[Uninterruptible power supply delay time system value \(QUPSDLYTIM\)](#)

The uninterruptible power supply delay timer (QUPSDLYTIM) controls the length of time that the system waits before saving main storage and powering down the system.

[Power restore IPL system value \(QPWRSTIPL\)](#)

This value controls what happens if the system ends when utility power is interrupted and then restored at a later time.

IPL considerations for uninterruptible power supply

When the system performs an initial program load (IPL), the Licensed Internal Code verifies various internal switches to see if the system was correctly turned off.

Only the successful completion of the Power Down System (PWRDWNSYS) command causes the system to be correctly turned off. For any other type of shutdown, the IBM® i operating system considers the next IPL to be abnormal. The Licensed Internal Code considers the IPL to be normal if the system saves main storage and completes the power-down sequence successfully. If neither power-down technique completes normally, the Licensed Internal Code runs various recovery functions on the next IPL.

When an abnormal IPL occurs, the IBM i program performs additional recovery functions. In an attended IPL, you can control some of these functions. In an unattended IPL that is caused by the Power restore IPL system value (QPWRSTIPL) or a timed IPL, the system can only use the values that are currently set.

If the Power Down System (PWRDWNSYS) command is run while power is supplied by the battery backup unit or uninterruptible power supply, the system delays writing any job logs until the next IPL. The system handles this type of PWRDWNSYS so that the amount of processing is minimized. The system does not perform an IPL while operating on the battery backup unit.

You can perform an IPL on the system if utility power is off and the system is operating on an uninterruptible power supply. This does not apply to a timed or remote IPL. Only a manually initiated IPL is allowed when utility power is interrupted.

Related concepts

Power restore IPL system value (QPWRRSTIPL)

This value controls what happens if the system ends when utility power is interrupted and then restored at a later time.

Related reference

Uninterruptible power supply messages

Several error messages are related to uninterruptible power supply.

Power-loss controlled shutdown

The power-loss controlled shutdown mechanism enables the system to shut down in an orderly fashion following a loss of utility power. The power-loss controlled shutdown mechanism is available only if you connected the system to an uninterruptible power supply.

If utility power is not restored within the time that is specified by the QUPSDLYTIM system value, the Licensed Internal Code signals each job to end at the next instruction boundary. Typically a job is at the next instruction boundary or will be shortly. However, some long running instructions, such as those that build access paths or create programs, may not complete in the time that is allowed. After a fixed internal time to reach an instruction boundary, the changed pages in main storage are written to auxiliary storage, the system shuts down abnormally, and then powers off.

Successfully completing a power-loss controlled shutdown causes the next initial program load (IPL) of the system programs to be considered normal by the Licensed Internal Code, but not by the operating system. If the uninterruptible power supply batteries do not hold the system long enough for the power-loss controlled shutdown to complete, the next IPL will be abnormal from the Licensed Internal Code viewpoint.

Related concepts

Uninterruptible power supply

An uninterruptible power supply provides a source of ac power if utility power should fail. Typically, an uninterruptible power supply has a finite backup time.

Uninterruptible power supply delay time system value (QUPSDLYTIM)

The uninterruptible power supply delay timer (QUPSDLYTIM) controls the length of time that the system waits before saving main storage and powering down the system.

Power restore IPL system value (QPWRRSTIPL)

This value controls what happens if the system ends when utility power is interrupted and then restored at a later time.

The default is 0 (Not allowed), which prevents the system from performing an IPL when utility power is restored.

Normally, you will only leave this value set to 0 under one of the following conditions:

- You prefer to manually start the system again.
- You have a power-handling program that determines whether the batteries are recharged enough to allow another IPL.

Related concepts

Handling uninterruptible power supply conditions when no power-handling program exists

You might need to change some system values when you do not have a power-handling program.

These are considerations when you do not have a power-handling program to handle controlled system shutdown.

IPL considerations for uninterruptible power supply

When the system performs an initial program load (IPL), the Licensed Internal Code verifies various internal switches to see if the system was correctly turned off.

Uninterruptible power supply

An uninterruptible power supply provides a source of ac power if utility power should fail. Typically, an uninterruptible power supply has a finite backup time.

An uninterruptible power supply supplies power to the system and all associated disk unit controllers and devices during a utility power failure. The run time of the uninterruptible power supply should be sized appropriately for a power-loss controlled shutdown.

Three system values affect an uninterruptible power supply. These system values define the action the system takes in response to a change in the power supply signal when an uninterruptible power supply is attached:

- [QUPSMGQ](#)
- [QUPSDLYTIM](#)
- [QPWRRSTIPL](#)

Related concepts

Power-loss controlled shutdown

The power-loss controlled shutdown mechanism enables the system to shut down in an orderly fashion following a loss of utility power. The power-loss controlled shutdown mechanism is available only if you connected the system to an uninterruptible power supply.

Uninterruptible power supply delay time system value (QUPSDLYTIM)

The uninterruptible power supply delay timer (QUPSDLYTIM) controls the length of time that the system waits before saving main storage and powering down the system.

Weak battery condition signal from uninterruptible power supply

When the battery on the system falls below a specific level of charge, the uninterruptible power supply issues a weak battery condition signal.

Uninterruptible power supply delay time system value (QUPSDLYTIM)

The uninterruptible power supply delay timer (QUPSDLYTIM) controls the length of time that the system waits before saving main storage and powering down the system.

If utility power is restored before the wait time ends, the system resets the timer. If the wait time is exceeded, the system begins to save main storage and goes into a controlled shutdown.

The three choices for the QUPSDLYTIM value are as follows:

- *BASIC or *CALC
- A numeric value
- *NOMAX.

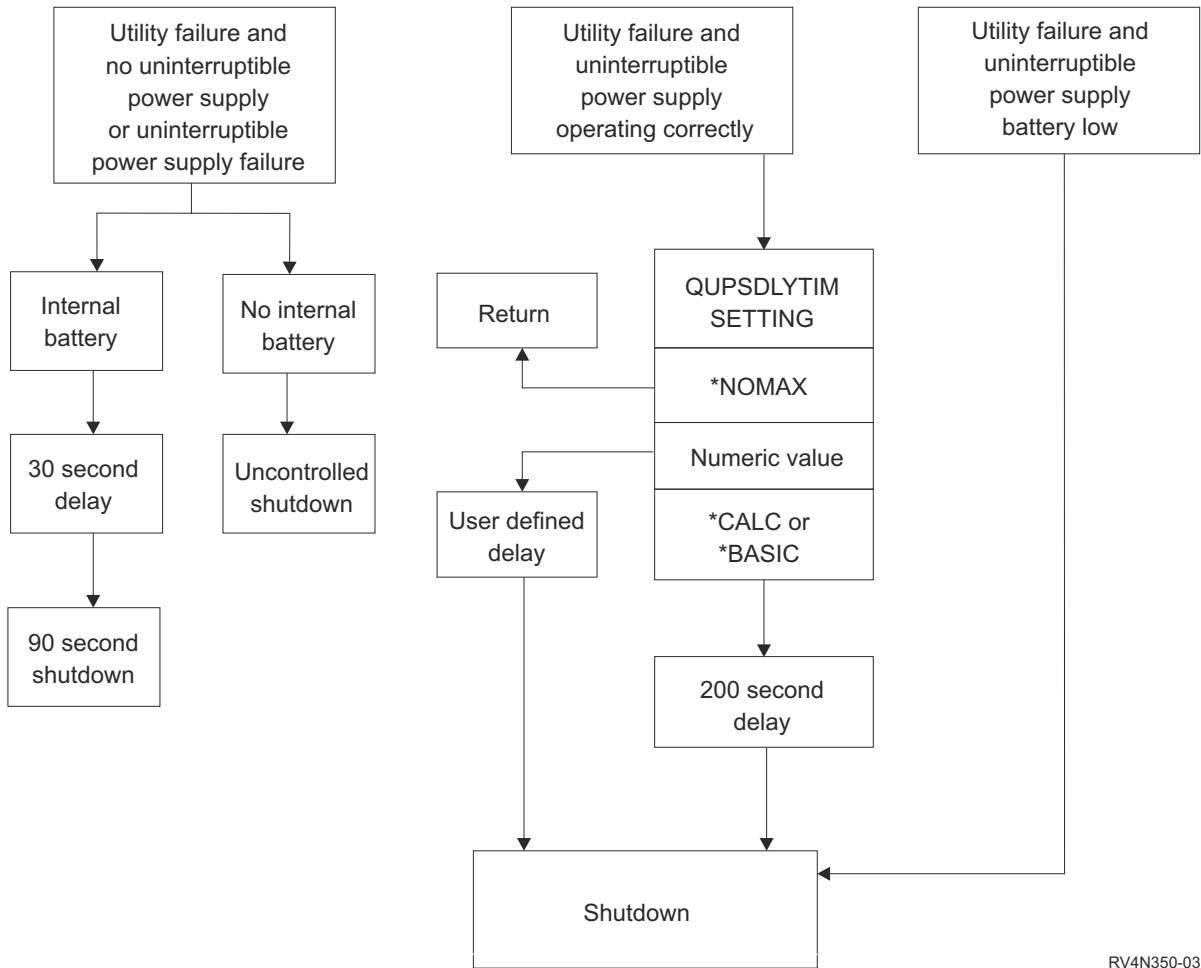
The time that is specified by the QUPSDLYTIM system might be one of the following values:

- Infinite if QUPSDLYTIM is set to *NOMAX (must have a power-handling program).
- A fixed internal delay if QUPSDLYTIM is set to *BASIC or *CALC.
- An alternate value that is specified by QUPSDLYTIM. The value must be a positive number, specifying seconds (zero means no delay).

If you set QUPSDLYTIM to *NOMAX, the following conditions must be met or the system begins an immediate shut down:

- The message queue specified in the QUPSMGQ system value must exist.
- If the message queue is a workstation message queue (or QSYSOPR), it must be in break or notify mode.
- If the message queue is not a workstation message queue, it must be allocated by a job.

The figure displays these choices and their implications.



RV4N350-03

Figure 1. QUPSDLYTIM values and actions

Notes:

- The default value for QUPSDLYTIM is *CALC. Leaving QUPSDLYTIM set to *CALC may defeat the purpose of having an uninterruptible power supply. *BASIC and *CALC provide the same function in systems that are running V3R6 or later releases of the operating system.
- If QUPSDLYTIM is set to *BASIC or *CALC, the system will perform a controlled shutdown after a fixed interval delay of 200 seconds. If you have an uninterruptible power supply, you can specify a numeric value.

The flow chart shows the values and actions of the QUPSDLYTIM system values. The flow chart starts with three boxes across the top of the chart.

The first box on the top is labeled "Utility failure and No uninterruptible power supply or UPS failure." Two arrows proceed from this box. One arrow points to a box labeled "Internal battery."

The other arrow points to a box labeled "No internal battery." The box that is labeled "Internal battery" points to another box labeled "30 second delay." The box that is labeled "30 second delay" points to a box that is labeled "90 second shutdown."

The box that is labeled "No internal battery" points to a box that is labeled "Uncontrolled shutdown."

The second box on the top is labeled "Utility failure and uninterruptible power supply operating correctly." An arrow from this box points to another box that is labeled "QUPSDLYTIM SETTING." This box shows the three settings for the QUPSDLYTIM setting, which are *NOMAX, numeric value, and *CALC or *BASIC.

If *NOMAX is selected, an arrow points to another box that is labeled "Return." If numeric value is selected, an arrow from the QUPSDLYTIM SETTING box points to another box that is labeled "User defined delay." Another arrow from the "User defined delay box points to a box that is labeled "Shutdown." If *CALC or *BASIC is selected, an arrow from the QUPSDLYTIM SETTING box points to another box that is labeled "200 second delay." The 200 second delay box points to the box that is labeled "Shutdown."

The third box is labeled "Utility failure and uninterruptible power supplybattery low." This box points to the box that is labeled "Shutdown."

Determining the value of QUPSDLYTIM

To determine the value of QUPSDLYTIM, you need to know the following information:

- The hold-up time of your uninterruptible power supply at the given load (the battery-rated time).
- The amount of time it takes your system to save main storage and turn off.

Available battery run time

The available battery run time is a dynamic variable. Evaluate your system's available battery with these questions:

- Has the power been fluctuating?
- Has the battery been previously discharged?
- Is the battery fully charged?

The actual battery run time is a function of capacity. Even if the battery is fully charged, it might not have 100% capacity. A typical battery will lose 20% to 50% of its rated capacity in 4 to 5 years, depending on ambient room temperatures. Elevated operating temperatures tend to increase the loss of capacity. The actual battery run time is also a function of the discharge load. The more loads the uninterruptible power supply serves, the less time it can sustain them. When the battery on the system falls below a specific level of charge, the uninterruptible power supply issues a weak battery condition signal. The weak battery condition signal from uninterruptible power supply affects the shutdown mechanisms.

The time it takes to save main storage and power-down is not an exact number. Save time depends on the number of changes in main storage that have not been written to disk. The number of disk arms available is also a factor; the more disk arms, the faster the system can write main storage to disk. The system power-down will also depend on the number of jobs and the average amount of time it takes to end them. Typically a job will be close to an instruction boundary; however, some instructions are long running. The following formula shows a worst case scenario in estimating the number of minutes it will take to shut down a system:

$$((0.0554 * (\text{MS size in MB})) / (\# \text{ of disk arms})) + 1.6 = \# \text{ of minutes}$$

Refer to the following table for an estimate of the time required to write main storage to disk on your particular system. The amount of time required to shut down a system typically is a small percentage of this value.

| Arms | 32MB | 64MB | 128MB | 256MB | 512MB | 1GB | 2GB | 4GB | 8GB | 16GB | 32GB | 64GB | 128GB |
|------|------|------|-------|-------|-------|------|------|-------|-------|-------|-------|-------|-------|
| 2 | 2.5 | 3.4 | 5.1 | 8.7 | 15.8 | 30.0 | 58.4 | 115.1 | 228.7 | | | | |
| 4 | 2.0 | 2.5 | 3.4 | 5.1 | 8.7 | 15.8 | 30.0 | 58.4 | 115.1 | 228.7 | | | |
| 8 | 1.8 | 2.0 | 2.5 | 3.4 | 5.1 | 8.7 | 15.8 | 30.0 | 58.4 | 115.1 | 228.7 | | |
| 16 | 1.7 | 1.8 | 2.0 | 2.5 | 3.4 | 5.1 | 8.7 | 15.8 | 30.0 | 58.4 | 115.1 | 228.7 | |
| 32 | 1.6 | 1.7 | 1.8 | 2.0 | 2.5 | 3.4 | 5.1 | 8.7 | 15.8 | 30.0 | 58.4 | 115.1 | 228.7 |
| 64 | | 1.6 | 1.7 | 1.8 | 2.0 | 2.5 | 3.4 | 5.1 | 8.7 | 15.8 | 30.0 | 58.4 | 115.1 |
| 128 | | | 1.6 | 1.7 | 1.8 | 2.0 | 2.5 | 3.4 | 5.1 | 8.7 | 15.8 | 30.0 | 58.4 |

| Arms | 32MB | 64MB | 128MB | 256MB | 512MB | 1GB | 2GB | 4GB | 8GB | 16GB | 32GB | 64GB | 128GB |
|------|------|------|-------|-------|-------|-----|-----|-----|-----|------|------|------|-------|
| 256 | | | | 1.6 | 1.7 | 1.8 | 2.0 | 2.5 | 3.4 | 5.1 | 8.7 | 15.8 | 30.0 |
| 512 | | | | | 1.6 | 1.7 | 1.8 | 2.0 | 2.5 | 3.4 | 5.1 | 8.7 | 15.8 |
| 1024 | | | | | | 1.6 | 1.7 | 1.8 | 2.0 | 2.5 | 3.4 | 5.1 | 8.7 |

Assumes all pages in main storage have been modified and changes have not yet been written to disk. Proportionately less time is required if fewer pages need to be written to disk.

Related concepts

[Enabling a power-handling program to control system activity during a power interruption](#)

System software support is essentially the same for both the battery feature and the uninterruptible power supply attachment.

[Handling uninterruptible power supply conditions when no power-handling program exists](#)

You might need to change some system values when you do not have a power-handling program.

These are considerations when you do not have a power-handling program to handle controlled system shutdown.

[Power-loss controlled shutdown](#)

The power-loss controlled shutdown mechanism enables the system to shut down in an orderly fashion following a loss of utility power. The power-loss controlled shutdown mechanism is available only if you connected the system to an uninterruptible power supply.

[Uninterruptible power supply](#)

An uninterruptible power supply provides a source of ac power if utility power should fail. Typically, an uninterruptible power supply has a finite backup time.

[Weak battery condition signal from uninterruptible power supply](#)

When the battery on the system falls below a specific level of charge, the uninterruptible power supply issues a weak battery condition signal.

Uninterruptible power supply message queue system value (QUPSMMSGQ)

The uninterruptible power supply message queue (QUPSMMSGQ) system value determines which message queues the power supply messages are sent to.

The system sends messages about the power supply to the system operator (QSYSOPR) message queue regardless of the value that is specified in the system value. If you specify a different message queue, that message queue also receives the same power supply messages. Specify a different message queue if you have one of the following conditions:

- You want another message queue to receive the power supply messages (for example, the data processing manager's message queue).
- You have a program that handles events that are related to the uninterruptible power supply.

Related concepts

[Enabling a power-handling program to control system activity during a power interruption](#)

System software support is essentially the same for both the battery feature and the uninterruptible power supply attachment.

[Handling uninterruptible power supply conditions when no power-handling program exists](#)

You might need to change some system values when you do not have a power-handling program. These are considerations when you do not have a power-handling program to handle controlled system shutdown.

Uninterruptible power supply messages

Several error messages are related to uninterruptible power supply.

| Message ID | Message text | Additional information |
|----------------|--|---|
| CPF1816 | System utility power failed at &1. | |
| CPF1817 | System utility power restored at &1. | The system power switched to the utility source. |
| CPF1819 | System ending. Power failure message not monitored. | System ending for reason &3. Notes: 1. Message queue &1 in library &2 specified by QUPSMGQ system value is not allocated to a user program or workstation. 2. Message queue &1 in library &2 is allocated to a workstation or is the system operator message queue (QSYSOPR in library QSYS), but the message queue is not in *BREAK or *NOTIFY mode. |
| CPI0961 | Uninterruptible power supply no longer attached. | |
| CPI0962 | The uninterruptible power supply is now attached. | |
| CPI0963 | System on auxiliary power. | System is currently running on auxiliary power. |
| CPI0964 | Weak-battery condition exists. | The external uninterruptible power supply or the internal battery indicates a weak-battery condition. If utility power fails during this condition, the system may begin an immediate shut down. See your uninterruptible power supply manual for more information. |
| CPI0965 | Failure of battery backup feature in system unit. | There may be a failure of the battery or the battery charger for the battery backup feature in the system unit. Contact your service representative. |
| CPI0966 | Failure of battery backup feature in expansion unit. | There may be a failure of the battery or the battery charger for the battery backup feature in the expansion unit. Contact your service representative. |
| CPI0973 | Weak battery condition no longer exists. | The weak-battery condition for the external uninterruptible power supply or the internal battery no longer exists. See your uninterruptible power supply manual. |
| CPI0974 | Uninterruptible power supply has been bypassed. | If a utility power failure occurs, the uninterruptible power supply cannot supply system power. The system will end abnormally. |
| CPI0975 | Uninterruptible power supply no longer bypassed. | The uninterruptible power supply is no longer bypassed. |

| Message ID | Message text | Additional information |
|----------------|------------------------------------|--|
| CPI0976 | Notification of message &1 failed. | Unable to send &1 message to message queue &2 in library &3 specified in QUPSMMSGQ system value. |
| CPI0981 | Automatic IPL not allowed. | Automatic IPL after utility power restored, specified by system value QPWRSTIPL, was disabled for one of the following reasons: <ul style="list-style-type: none"> • Utility power failed and the battery weak condition was detected. • Utility power failed and the uninterruptible power supply delay time specified in system value QUPSDLYTIM was exceeded. |
| CPI0994 | System power is restored. | The system power switched to the utility source at &1. The utility power failed for &2 seconds. During this time, the system was not doing any application processing. If the utility power continues to fail, power down the system (PWRDWNSYS command). |

Related concepts

IPL considerations for uninterruptible power supply

When the system performs an initial program load (IPL), the Licensed Internal Code verifies various internal switches to see if the system was correctly turned off.

Weak battery condition signal from uninterruptible power supply

When the battery on the system falls below a specific level of charge, the uninterruptible power supply issues a weak battery condition signal.

Weak battery condition signal from uninterruptible power supply

When the battery on the system falls below a specific level of charge, the uninterruptible power supply issues a weak battery condition signal.

The weak battery signal from the uninterruptible power supply will cause the system to perform a power loss controlled shutdown if the following conditions are true:

- You have chosen to use the four-wire communication between the IBM i product and an uninterruptible power supply.
- The utility fail signal is active.

The controlled shutdown occurs immediately. If the system is running on utility power and the uninterruptible power supply sends a weak battery signal, the system remains up and posts a CPI0964 message. However, the system initiates a shutdown mechanism immediately under this condition if utility power is lost.

A typical factory-preset time for an uninterruptible power supply to send a weak battery signal is with approximately two minutes of run time remaining. Some uninterruptible power supply models have an adjustable setting for this time. Ideally, you want to set it for the amount of time it takes for your system to perform a power-loss controlled shutdown. Do not assume that the factory-preset time on the uninterruptible power supply is sufficient for a normal shutdown of your system. Calculate the amount of time necessary to perform a power-loss controlled shutdown, use an appropriate value for QUPSDLYTIM, and adjust the time for weak battery signal on the uninterruptible power supply (if adjustable).

The figure shows the time progression of the QUPSDLYTIM function, from left to right.

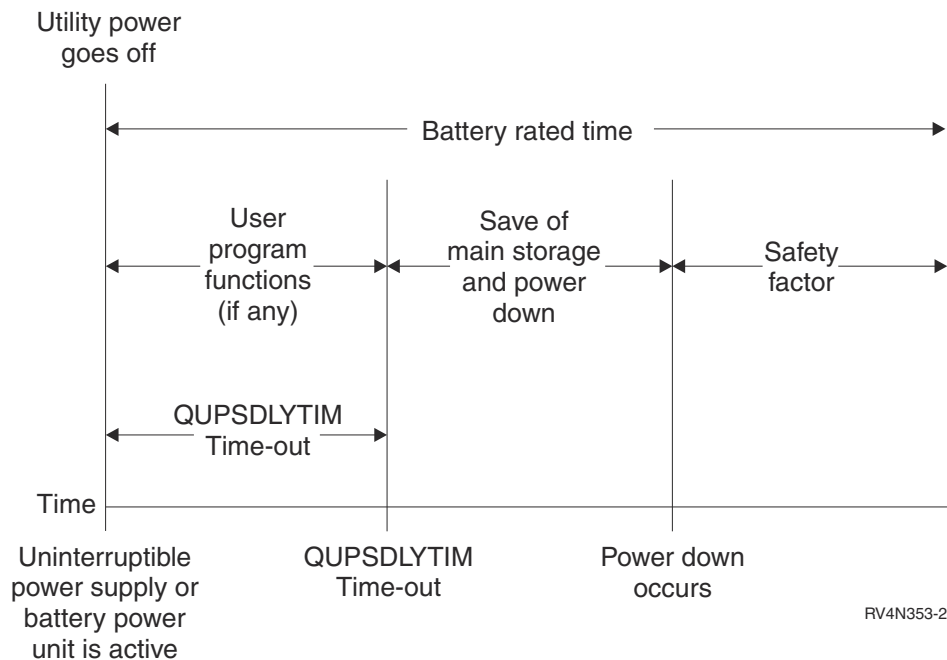


Figure 2. Time line of QUPSDLYTIM function

The time line shows what happens from the time the power goes out to the time the system shuts down. The duration of the time is the same as the rated life of the battery. The time line starts at the point that utility power goes off. At the same time the uninterruptible power supply or battery power unit is active. At this time user program functions (if any) and the QUPSDLYTIM value time-out is in effect. When that time expires, main storage is saved, then shut down occurs. After that there should be some time left of battery life as a safety factor.

Related concepts

Uninterruptible power supply delay time system value (QUPSDLYTIM)

The uninterruptible power supply delay timer (QUPSDLYTIM) controls the length of time that the system waits before saving main storage and powering down the system.

Uninterruptible power supply

An uninterruptible power supply provides a source of ac power if utility power should fail. Typically, an uninterruptible power supply has a finite backup time.

Related reference

Uninterruptible power supply messages

Several error messages are related to uninterruptible power supply.

Enabling a power-handling program to control system activity during a power interruption

System software support is essentially the same for both the battery feature and the uninterruptible power supply attachment.

In some environments you may want to perform different actions when the uninterruptible power supply begins supplying power to the system or when power is fluctuating. A power-handling program can use any of the following methods to handle these situations:

- Sending specific messages to interactive users
- Ending batch jobs and subsystems in preparation for powering down
- Dynamically changing the system values that control uninterruptible power supply processing
- Issuing the PWRDWN SYS command to shut down the system

To specify that you have power handling programs, change the QUPSMMSGQ system value to the name of a queue you have created. The system will send the same messages to both QSYSOPR and the queue you specified. Change the QUPSDLYTIM system value to *NOMAX.

The program you use to handle the message queue must be active and must allocate the queue. If a program has not allocated the queue that is specified in QUPSMMSGQ, the system will assume that no power handling program exists.

Related concepts

[Uninterruptible power supply message queue system value \(QUPSMMSGQ\)](#)

The uninterruptible power supply message queue (QUPSMMSGQ) system value determines which message queues the power supply messages are sent to.

[Uninterruptible power supply delay time system value \(QUPSDLYTIM\)](#)

The uninterruptible power supply delay timer (QUPSDLYTIM) controls the length of time that the system waits before saving main storage and powering down the system.

[Handling uninterruptible power supply conditions when no power-handling program exists](#)

You might need to change some system values when you do not have a power-handling program.

These are considerations when you do not have a power-handling program to handle controlled system shutdown.

Implementing a power-handling program

When an uninterruptible power supply is attached, you can use a power-handling program for a system.

This procedure assumes that QCTL is the controlling subsystem.

1. Isolate the objects used by the power-handling program in their own library and secure them from other users because of the critical nature of a power-handling program.

You can use the following command:

```
CRTLIB LIB(UPSLIB) AUT(*EXCLUDE) CRTAUT(*EXCLUDE)
```

2. Create a unique message queue and exclude its use from all other users and general system use because a power-handling program requires exclusive use of a message queue, as follows:

```
CRTMSGQ MSGQ(UPSLIB/UPSMMSGQ) AUT(*EXCLUDE)
```

3. Create the CL power-handling program and exclude its use from all other users, as follows:

```
CRTCLPGM PGM(UPSLIB/UPSPGM) AUT(*EXCLUDE)
```

4. Create the job description for the power-handling program you want started automatically whenever the controlling subsystem is started.

```
CRTJOBDD JOBDD(UPSLIB/UPSJOBDD) JOBQ(QSYS/QCTL2)  
JOBPTY(1) RQSDTA('CALL UPSLIB/UPSPGM')  
AUT(*EXCLUDE) USER(yyyyyy)
```

Note: You must provide a user profile to use the job description as an auto-start job.

5. Create an alternative controlling subsystem description by making a copy of the current controlling subsystem description, as follows:

```
CRTDUPOBJ OBJ(QCTL) FROMLIB(QSYS)  
OBJTYPE(*SBSD) TOLIB(QSYS) NEWOBJ(QCTL2)
```

6. Change your startup program to start all subsystems. Check to see if system value QCTLSBSD is equal to QCTL2. See system value QSTRUPPGM for the name and library. If you do not change the startup program, it cannot check for QCTL2 in QSYS or QGPL, and the startup program ends without starting the rest of your subsystems.
7. Add the autostart job entry to the alternative controlling subsystem description, as follows:

```
ADDAJE SBSDB(QSYS/QCTL2) JOB(QSYS/QCTL2)
JOBDB(UPSLIB/UPSJOBDB)
```

8. Change the controlling subsystem system value to use the alternative controlling subsystem description, as follows:

```
CHGSYSVAL SYSVAL(QCTLSBSD) VALUE('QCTL2')
```

9. Change the system values to allow the program to handle a power outage, as follows:

```
CHGSYSVAL SYSVAL(QUPSMMSGQ) VALUE('UPSMMSGQ UPSLIB')
CHGSYSVAL SYSVAL(QUPSDLYTIM) VALUE(*NOMAX)
```

10. Perform an IPL of the system to have the new controlling subsystem description take effect, as follows:

```
PWRDWN SYS OPTION(*IMMED) RESTART(*YES)
```

Related tasks

Example: Power-handling CL program

The sample power-handling CL program can help you build your own program according to your specific system requirements.

Writing a power-handling program

You should activate the power-handling program at each initial program load (IPL) and keep it active at all times. It should be accounted for in the activity level available in work management subsystem specifications.

The message queue that is specified in QUPSMMSGQ is used for uninterruptible power supply message processing. The program normally allocates the queue by specifying the command:

```
ALCOBJ OBJ(xxx/yyy *MSGQ *EXCL)
```

When a message arrives, there are some critical messages to process:

- **CPF1816: System utility power failed at &1** (this message applies to the battery feature and full power supply)
- **CPF1817: System power restored at &1** (this message applies to the battery feature and full power supply)
- **CPI0963: System on auxiliary power** (this message applies if system power fails during the IPL)
- **CPI0994: System power is restored** (this message applies to the limited uninterruptible power supply)

You can choose to ignore the other messages.

Your program can handle a brief power interruption without doing any unique processing. For example, when the CPF1816 message arrives, you can set a switch in your program that indicates that the message occurred. The program might then perform a RCVMSG with WAIT(10) to cause a time-out in 10 seconds. If the CPF1817 message is received before the time-out occurs, you can reset the switch and perform no other action.

Your program can prepare for a normal shut down if power is not restored after a brief time period. For example, if you have remote workstations that are still active, you may want to send them a message requesting they sign off quickly. You may want to issue ENDSBS OPTION(*CNTRLD) to prevent new workstations from signing on or new batch work from beginning. If you have batch jobs running, you may want to end them with the following command:

```
ENDJOB OPTION(*CNTRLD)
```

This sets an indicator to end the job. Some high-level languages and the control language enable you to test within a program to see if a controlled end job was specified. If the program does not end itself, the default on the ENDJOB command (30 seconds) is used.

You can set a second timer in your program, such as RCVMSG WAIT(120). If utility power has not been restored, you can issue the PWRDWN SYS OPTION(*IMMED) command. The wait time should be specified based on your battery time and the time that is required for a power-down.

If you name a message queue for the QUPSMGQ system value and *NOMAX for QUPSDLYTIM, the following conditions apply:

- The message queue you specify must be allocated by a program when the CPF1816 message occurs.
- If the message queue you specify is a workstation message queue, it must be in a break or notify mode.

If not, the system assumes that no power handling program exists, and the system will be turned off.

Note: When the system has been placed in a restricted state (for example, ENDSBS *ALL), your uninterruptible power supply handling program will no longer be active. For this reason, it is necessary to prepare an alternate method of dealing with your uninterruptible power supply and any possible power interruptions that may occur while your system is in a restricted state.

For example, when performing a save system (using the SAVSYS command) or reclaim storage (using the RCLSTG command), your uninterruptible power supply program will no longer be active after all subsystems have been ended. Only a single workstation job is active. You can perform one of the following actions as an alternative:

1. After all subsystems have been ended, from the command line change the mode for the message queue specified in system value QUPSMGQ to *BREAK. This causes all uninterruptible power supply messages to be sent as break messages to the user that is signed on to that workstation. This method enables you to manually decide what to do if a power failure occurs.
2. Change the system value QUPSDLYTIM to some value other than *NOMAX (for example, the number of minutes you want the uninterruptible power supply to ride out the power failure). This method will prevent the system from performing an immediate quick shut down. However, if a power failure occurs, a quick shut down will be performed if the power failure lasts longer than the value specified for the system value QUPSDLYTIM.
3. Change your existing uninterruptible power supply handling program for use as a BREAK HANDLING program which may be used while the system is in a restricted state. This can be done by creating a second version of your uninterruptible power supply program that does not allocate the message queue specified in system value QUPSMGQ. (In other words, do not use the ALCOBJ command.) To utilize this program while in a restricted state, before starting a dedicated function such as SAVSYS, enter the command:

```
CHGMSGQ MSGQ(LIB/MSGQ) DLVRY(*BREAK)
PGM(LIB/PGM)
```

where (LIB/MSGQ) is the name the message queue specified in system value QUPSMGQ, and (LIB/PGM) is the name of your modified uninterruptible power supply handling program. Now, should a power failure occur, the power failure message is handled by the break handling program, even while a function such as the SAVSYS command is running. To deactivate the break-handling program, either have the user sign off or enter the following command:

```
CHGMSGQ MSGQ(LIB/MSGQ) DLVRY(*HOLD)
PGM(*DSPMSG)
```

After you have deactivated the break-handling program, you should immediately start your subsystems and your normal uninterruptible-power-supply handling program.

Note: By using the code examples, you agree to the terms of the [“Code license and disclaimer information”](#) on page 18.

Example: Power-handling CL program

The sample power-handling CL program can help you build your own program according to your specific system requirements.

Although this example CL program should work correctly as written, you need adjust it for your specific system requirements. For example, add additional recovery to the program by monitoring for error conditions specific to your system. You also need to supply a user-written program that performs the steps necessary to prepare for a normal shutdown of the system. These steps might include holding job queues, sending messages, and ending subsystems. The program should restart normal operations if the power outage ends before the system is turned off.

The program performs the following actions:

1. The power-handling program retrieves the system value QUPSMMSGQ into the variables &LIB and &MSGQ. Although this is not absolutely necessary, it does help to ensure that the correct message queue is allocated each time the program is started. The program then deletes the message queue (if it already exists) and then creates it again. This step helps eliminate clearing the message queue or any problems that might occur if the message queue is damaged.
2. After the message queue has been created, the program must allocate (ALCOBJ command) the message queue exclusively.

Note: When the system value QUPSDLYTIM is set to *NOMAX, use one of the following methods to allocate the message queue that is specified for system value QUPSMMSGQ:

- Use the command CHGMSGQ MSGQ(UPSLIB/UPSMSGQ) MODE(*BREAK)
- Include the ALCOBJ command within the power-handling program

You may only use one of the methods that are listed.

If a user or a program has not allocated the message queue, and a power outage occurs, the system performs an immediate quick shut down.

3. At label A in the example power handling program, the Receive Message (RCVMSG) command is used to determine what message has been sent to the message queue. The RCVMSG command is also used to determine the amount of wait time (WAIT parameter) throughout the program.

At label A in the example, the value of the WAIT parameter on the RCVMSG command causes the program to wait 600 seconds (10 minutes). After 10 minutes, the program checks to see if a controlled end to the job has occurred (using the ENDSBS or ENDJOB command). This prevents the program from delaying the ENDJOB or ENDSBS command.

If you use ENDSBS *IMMED or ENDJOB *IMMED, then this part of the program can be removed.

You can change the value for the WAIT parameter on the RCVMSG command to *MAX. The RCVMSG command runs immediately if the system sends a message to the message queue that is specified on the RCVMSG command. This occurs regardless of the value that is specified for the WAIT parameter.

4. If the message that is received by the RCVMSG command is CPF1816 (system utility power failed), the program checks to see if this is a short power failure. The program runs a second RCVMSG command with a value of ten seconds for the WAIT parameter (you must decide how many seconds is adequate for your site).

If the message that is received by the RCVMSG command within the specified ten seconds is CPF1817 (system utility power restored), then power was restored. The program returns to label A and starts the cycle again.

If the ten second limit is reached and no message is received, then the power failure is longer than ten seconds and additional steps are necessary. At this point, you can call a user-written program that performs the following actions:

- The program uses the HLDJOBQ command to hold certain long running batch jobs
- The program notifies unaffected remote users
- The program begins ending jobs and subsystems in an orderly manner

5. At label B, in the example power-handling program, the program attempts to wait-out the power failure. The program retrieves the present time and places this information into a CL variable that is named &START. The present time is used to determine how much uninterruptible power supply time is left.

A third RCVMSG command runs, and a CL variable that is named &WAIT (that was changed earlier in the program) determines the value for the WAIT parameter. The CL variable &WAIT is the amount of reserve power the uninterruptible power supply can provide. The value for the &WAIT variable at label A should be adjusted to the amount of reserve power that the uninterruptible power supply can provide. (The amount of reserve power is measured in seconds.)

In the example program, the value of the &WAIT variable is set to 1200 seconds (20 minutes). If message CPF1817 (System utility power restored) is received during that time, then power has been restored, and another program can be called to restart normal system operations. The program then returns to label A and starts the cycle again. If message CPF1817 is not sent after 1200 seconds, then RCVMSG returns a blank message ID (not equal to CPF1817). This indicates that power has *not* been restored and an immediate system shut down is started. If a message other than CPF1817 is received during this 1200 second wait, the following actions occur:

- a. The program retrieves the present time, and calculates how much of the 1200 second wait period has elapsed.
- b. The program subtracts the difference, and changes the CL variable &WAIT to reflect that amount.
- c. The program returns to label B to use the remaining power that is provided by the uninterruptible power supply.

This part of the program checks to see if a date change occurs.

Note: By using the code examples, you agree to the terms of the [“Code license and disclaimer information”](#) on page 18.

```

SEQNBR*...+... 1 ...+... 2 ...+... 3 ...+... 4 ...+... 5 ...+... 6 ...
 1.00      PGM
 2.00      DCL      VAR(&UPSMMSGQ)  TYPE(*CHAR)  LEN(20)
 3.00      DCL      VAR(&LIB)        TYPE(*CHAR)  LEN(20)
 4.00      DCL      VAR(&MSGQ)       TYPE(*CHAR)  LEN(20)
 5.00      DCL      VAR(&MSGID)      TYPE(*CHAR)  LEN(7)
 6.00      DCL      VAR(&ENDSTS)     TYPE(*CHAR)  LEN(1)
 7.00      DCL      VAR(&WAIT)       TYPE(*DEC)   LEN(6)
 8.00      DCL      VAR(&HOUR)       TYPE(*DEC)   LEN(6)
 9.00      DCL      VAR(&MIN)        TYPE(*DEC)   LEN(6)
10.00     DCL      VAR(&SEC)        TYPE(*DEC)   LEN(6)
11.00     DCL      VAR(&TIME)       TYPE(*CHAR)  LEN(6)
12.00     DCL      VAR(&START)      TYPE(*DEC)   LEN(6)
13.00     DCL      VAR(&END)        TYPE(*DEC)   LEN(6)
14.00     DCL      VAR(&RESULT)     TYPE(*DEC)   LEN(6)
15.00     DCL      VAR(&PGM)        TYPE(*CHAR)  LEN(10)
16.00     RTVSYSVAL  SYSVAL(QUPSMMSGQ) RTNVAR(&UPSMMSGQ)
17.00     CHGVAR    VAR(&MSGQ) VALUE(%SST(&UPSMMSGQ 1 10))
18.00     CHGVAR    VAR(&LIB)  VALUE(%SST(&UPSMMSGQ 11 10))
19.00     DLTMSGQ   MSGQ(&LIB/&MSGQ)
20.00     MONMSG    MSGID('CPF2105') /* Message queue not found. */
21.00     CRTMSGQ   MSGQ(&LIB/&MSGQ) TEXT('UPS Power handling +
22.00                                program message queue') AUT(*EXCLUDE)
23.00     ALCOBJ    OBJ((&LIB/&MSGQ *MSGQ *EXCL))
24.00
25.00  A:  RCVMSG    MSGQ(&LIB/&MSGQ) WAIT(600) RMV(*YES) +
26.00                                MSGID(&MSGID)
27.00     IF        COND(&MSGID *NE CPF1816) THEN(DO)
28.00     RTVJOBA   ENDSTS(&ENDSTS)
29.00     IF        COND(&ENDSTS *EQ '1') THEN(GOTO CMDLBL(ENDPGM))
30.00     GOTO     CMDLBL(A)
31.00     ENDDO
32.00
33.00     /* Check to see if this is a short power outage. */
34.00     IF        COND(&MSGID *EQ 'CPF1816') THEN(DO)
35.00     RCVMSG    MSGQ(&LIB/&MSGQ) WAIT(10) RMV(*YES) +
36.00                                MSGID(&MSGID) /* Wait ten seconds)
37.00     IF        COND(&MSGID *EQ 'CPF1817') THEN(GOTO CMDLBL(A))
38.00     ENDDO
39.00
40.00     /* Power outage was longer than 10 seconds. */
41.00     CALL      PGM(&LIB/&PGM) /* User program that prepares +
42.00                                system for possible shutdown. */
43.00

```

Figure 3. Power-handling CL program

```

44.00      /* Check to see if this is a long power outage. */
45.00      CHGVAR      VAR(&WAIT) VALUE(01200) /* 20 minutes. */
46.00      B: RTVSYSVAL SYSVAL(QTIME) RTNVAR(&TIME)
47.00      CHGVAR      VAR(&HOUR) VALUE(%SST(&TIME 1 2))
48.00      CHGVAR      VAR(&MIN) VALUE(%SST(&TIME 3 2))
49.00      CHGVAR      VAR(&SEC) VALUE(%SST(&TIME 5 2))
50.00      CHGVAR      VAR(&START) VALUE((&SEC) + (&MIN * 60) + +
51.00      (&HOUR * 3600))
52.00      RCVMSG      MSGQ(&LIB/&MSGQ) WAIT(&WAIT) RMV(*YES) +
53.00      MSGID(&MSGID)
54.00      IF          COND(&MSGID *EQ 'CPF1817') THEN(DO)
55.00      CALL          PGM(&LIB/&PGM) /* User program that restarts +
56.00      system operations. */
57.00      GOTO          CMDLBL(A)
58.00      ENDDO
59.00
60.00      IF          COND(&MSGID *NE 'CPF1817') THEN(DO)
61.00      RTVSYSVAL      SYSVAL(QTIME) RTNVAR(&TIME)
62.00      CHGVAR      VAR(&HOUR) VALUE(%SST(&TIME 1 2))
63.00      CHGVAR      VAR(&MIN) VALUE(%SST(&TIME 3 2))
64.00      CHGVAR      VAR(&SEC) VALUE(%SST(&TIME 5 2))
65.00      CHGVAR      VAR(&END) VALUE((&SEC) + (&MIN * 60) + +
66.00      (&HOUR * 3600))
67.00      CHGVAR      VAR(&RESULT) VALUE(&END - &START)
68.00      IF          COND(&RESULT < 0) THEN(CHGVAR VAR(&RESULT) +
69.00      VALUE(86400 + &RESULT)) /* Check for +
70.00      change of day. 86400 = 24 hours. */
71.00      IF          COND(&RESULT *GE &WAIT) THEN(PWRDWN SYS +
72.00      OPTION(*IMMED) /* uninterruptible power supply +
battery reserve has expired. */

74.00
75.00      CHGVAR      VAR(&WAIT) VALUE(&WAIT - &RESULT) /* UPS +
76.00      battery reserve has not expired. */
77.00      GOTO          CMDLBL(B)
78.00      ENDDO
79.00
80.00      ENDPGM:      DLCOBJ      OBJ((&LIB/&MSGQ *MSGQ *EXCL))
81.00      ENDPGM

```

Related tasks

[Implementing a power-handling program](#)

When an uninterruptible power supply is attached, you can use a power-handling program for a system.

Related reference

[Example: Testing a power-handling CL program](#)

After a power-handling program has been created, you can test it by creating a simple CL program that uses the Send Program Message (SNDPGMMSG) command and the Delay Job (DLYJOB) command.

Example: Testing a power-handling CL program

After a power-handling program has been created, you can test it by creating a simple CL program that uses the Send Program Message (SNDPGMMSG) command and the Delay Job (DLYJOB) command.

Set the DLY parameter value on the DLYJOB command to meet your testing needs.

Note: When testing an uninterruptible power supply program, commands such as PWRDWN SYS, ENDJOB, and ENDSBS should be replaced with the SNDMSG command to indicate that the command has run.

```

SEQNBR*...+... 1 ...+... 2 ...+... 3 ...+... 4 ...+... 5 ...+... 6 ...+... 7....
1.00          PGM
2.00          DLYJOB      DLY(120) /* Wait for 2 minutes. */
3.00          SNDPGMMSG  MSGID(CPF1816) MSGF(QCPFMSG) +
4.00          TOMSGQ(UPSLIB/UPSMMSGQ) /* Power failure +
5.00          message. */
6.00          DLYJOB      DLY(5) /* Wait for 5 seconds. */
7.00          SNDPGMMSG  MSGID(CPF1817) MSGF(QCPFMSG) +
8.00          TOMSGQ(UPSLIB/UPSMMSGQ) /* Power restored +
9.00          message. */
10.00         ENDPGM

```

Figure 4. Testing a power-handling program example

Note: By using the code examples, you agree to the terms of the [“Code license and disclaimer information”](#) on page 18.

Related tasks

Example: Power-handling CL program

The sample power-handling CL program can help you build your own program according to your specific system requirements.

Code license and disclaimer information

IBM grants you a nonexclusive copyright license to use all programming code examples from which you can generate similar function tailored to your own specific needs.

SUBJECT TO ANY STATUTORY WARRANTIES WHICH CANNOT BE EXCLUDED, IBM, ITS PROGRAM DEVELOPERS AND SUPPLIERS MAKE NO WARRANTIES OR CONDITIONS EITHER EXPRESS OR IMPLIED, INCLUDING BUT NOT LIMITED TO, THE IMPLIED WARRANTIES OR CONDITIONS OF MERCHANTABILITY, FITNESS FOR A PARTICULAR PURPOSE, AND NON-INFRINGEMENT, REGARDING THE PROGRAM OR TECHNICAL SUPPORT, IF ANY.

UNDER NO CIRCUMSTANCES IS IBM, ITS PROGRAM DEVELOPERS OR SUPPLIERS LIABLE FOR ANY OF THE FOLLOWING, EVEN IF INFORMED OF THEIR POSSIBILITY:

1. LOSS OF, OR DAMAGE TO, DATA;
2. DIRECT, SPECIAL, INCIDENTAL, OR INDIRECT DAMAGES, OR FOR ANY ECONOMIC CONSEQUENTIAL DAMAGES; OR
3. LOST PROFITS, BUSINESS, REVENUE, GOODWILL, OR ANTICIPATED SAVINGS.

SOME JURISDICTIONS DO NOT ALLOW THE EXCLUSION OR LIMITATION OF DIRECT, INCIDENTAL, OR CONSEQUENTIAL DAMAGES, SO SOME OR ALL OF THE ABOVE LIMITATIONS OR EXCLUSIONS MAY NOT APPLY TO YOU.

Notices

This information was developed for products and services offered in the U.S.A.

IBM may not offer the products, services, or features discussed in this document in other countries. Consult your local IBM representative for information on the products and services currently available in your area. Any reference to an IBM product, program, or service is not intended to state or imply that only that IBM product, program, or service may be used. Any functionally equivalent product, program, or service that does not infringe any IBM intellectual property right may be used instead. However, it is the user's responsibility to evaluate and verify the operation of any non-IBM product, program, or service.

IBM may have patents or pending patent applications covering subject matter described in this document. The furnishing of this document does not grant you any license to these patents. You can send license inquiries, in writing, to:

IBM Director of Licensing
IBM Corporation
North Castle Drive
Armonk, NY 10504-1785
U.S.A.

For license inquiries regarding double-byte (DBCS) information, contact the IBM Intellectual Property Department in your country or send inquiries, in writing, to:

Intellectual Property Licensing
Legal and Intellectual Property Law
IBM Japan Ltd.
1623-14, Shimotsuruma, Yamato-shi
Kanagawa 242-8502 Japan

The following paragraph does not apply to the United Kingdom or any other country where such provisions are inconsistent with local law: INTERNATIONAL BUSINESS MACHINES CORPORATION PROVIDES THIS PUBLICATION "AS IS" WITHOUT WARRANTY OF ANY KIND, EITHER EXPRESS OR IMPLIED, INCLUDING, BUT NOT LIMITED TO, THE IMPLIED WARRANTIES OF NON-INFRINGEMENT, MERCHANTABILITY OR FITNESS FOR A PARTICULAR PURPOSE. Some states do not allow disclaimer of express or implied warranties in certain transactions, therefore, this statement may not apply to you.

This information could include technical inaccuracies or typographical errors. Changes are periodically made to the information herein; these changes will be incorporated in new editions of the publication. IBM may make improvements and/or changes in the product(s) and/or the program(s) described in this publication at any time without notice.

Any references in this information to non-IBM Web sites are provided for convenience only and do not in any manner serve as an endorsement of those Web sites. The materials at those Web sites are not part of the materials for this IBM product and use of those Web sites is at your own risk.

IBM may use or distribute any of the information you supply in any way it believes appropriate without incurring any obligation to you.

Licensees of this program who wish to have information about it for the purpose of enabling: (i) the exchange of information between independently created programs and other programs (including this one) and (ii) the mutual use of the information which has been exchanged, should contact:

IBM Corporation
Software Interoperability Coordinator, Department YBWA
3605 Highway 52 N
Rochester, MN 55901
U.S.A.

Such information may be available, subject to appropriate terms and conditions, including in some cases, payment of a fee.

The licensed program described in this document and all licensed material available for it are provided by IBM under terms of the IBM Customer Agreement, IBM International Program License Agreement or any equivalent agreement between us.

Any performance data contained herein was determined in a controlled environment. Therefore, the results obtained in other operating environments may vary significantly. Some measurements may have been made on development-level systems and there is no guarantee that these measurements will be the same on generally available systems. Furthermore, some measurements may have been estimated through extrapolation. Actual results may vary. Users of this document should verify the applicable data for their specific environment.

Information concerning non-IBM products was obtained from the suppliers of those products, their published announcements or other publicly available sources. IBM has not tested those products and cannot confirm the accuracy of performance, compatibility or any other claims related to non-IBM products. Questions on the capabilities of non-IBM products should be addressed to the suppliers of those products.

All statements regarding IBM's future direction or intent are subject to change or withdrawal without notice, and represent goals and objectives only.

All IBM prices shown are IBM's suggested retail prices, are current and are subject to change without notice. Dealer prices may vary.

This information is for planning purposes only. The information herein is subject to change before the products described become available.

This information contains examples of data and reports used in daily business operations. To illustrate them as completely as possible, the examples include the names of individuals, companies, brands, and products. All of these names are fictitious and any similarity to the names and addresses used by an actual business enterprise is entirely coincidental.

COPYRIGHT LICENSE:

This information contains sample application programs in source language, which illustrate programming techniques on various operating platforms. You may copy, modify, and distribute these sample programs in any form without payment to IBM, for the purposes of developing, using, marketing or distributing application programs conforming to the application programming interface for the operating platform for which the sample programs are written. These examples have not been thoroughly tested under all conditions. IBM, therefore, cannot guarantee or imply reliability, serviceability, or function of these programs. The sample programs are provided "AS IS", without warranty of any kind. IBM shall not be liable for any damages arising out of your use of the sample programs.

Each copy or any portion of these sample programs or any derivative work, must include a copyright notice as follows:

© (your company name) (year). Portions of this code are derived from IBM Corp. Sample Programs.

© Copyright IBM Corp. _enter the year or years_.

If you are viewing this information softcopy, the photographs and color illustrations may not appear.

Programming interface information

This Controlling system shutdown using a power-handling program publication documents intended Programming Interfaces that allow the customer to write programs to obtain the services of IBM i.

Trademarks

IBM, the IBM logo, and ibm.com are trademarks or registered trademarks of International Business Machines Corp., registered in many jurisdictions worldwide. Other product and service names might be

trademarks of IBM or other companies. A current list of IBM trademarks is available on the Web at "[Copyright and trademark information](http://www.ibm.com/legal/copytrade.shtml)" at www.ibm.com/legal/copytrade.shtml.

Other product and service names might be trademarks of IBM or other companies.

Terms and conditions

Permissions for the use of these publications is granted subject to the following terms and conditions.

Personal Use: You may reproduce these publications for your personal, noncommercial use provided that all proprietary notices are preserved. You may not distribute, display or make derivative works of these publications, or any portion thereof, without the express consent of IBM.

Commercial Use: You may reproduce, distribute and display these publications solely within your enterprise provided that all proprietary notices are preserved. You may not make derivative works of these publications, or reproduce, distribute or display these publications or any portion thereof outside your enterprise, without the express consent of IBM.

Except as expressly granted in this permission, no other permissions, licenses or rights are granted, either express or implied, to the publications or any information, data, software or other intellectual property contained therein.

IBM reserves the right to withdraw the permissions granted herein whenever, in its discretion, the use of the publications is detrimental to its interest or, as determined by IBM, the above instructions are not being properly followed.

You may not download, export or re-export this information except in full compliance with all applicable laws and regulations, including all United States export laws and regulations.

IBM MAKES NO GUARANTEE ABOUT THE CONTENT OF THESE PUBLICATIONS. THE PUBLICATIONS ARE PROVIDED "AS-IS" AND WITHOUT WARRANTY OF ANY KIND, EITHER EXPRESSED OR IMPLIED, INCLUDING BUT NOT LIMITED TO IMPLIED WARRANTIES OF MERCHANTABILITY, NON-INFRINGEMENT, AND FITNESS FOR A PARTICULAR PURPOSE.



Product Number: 5770-SS1