

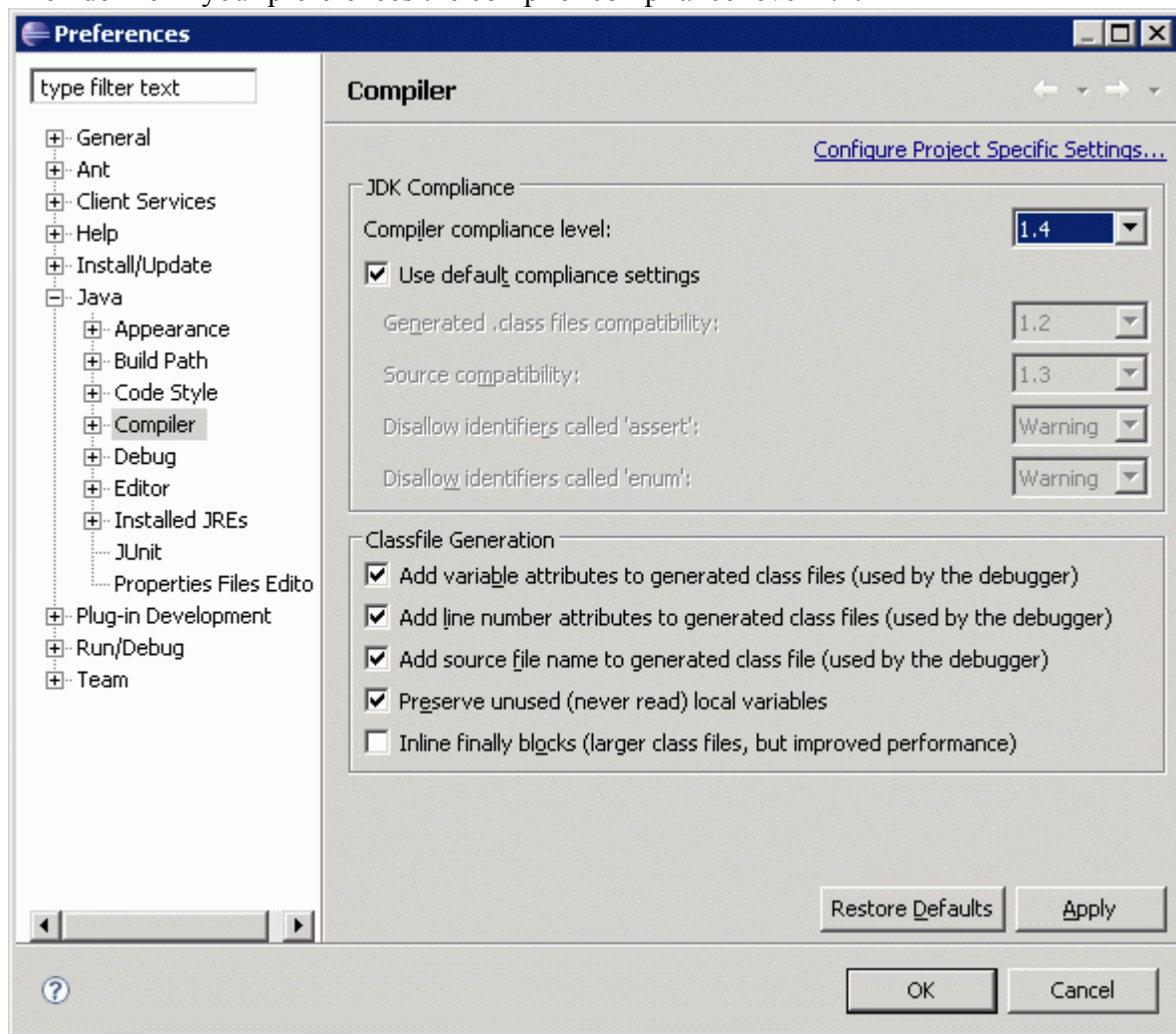
How to develop Eclipse Components in an Eclipse IDE for Composite Applications in Lotus Notes

The document describes how you can develop Eclipse components in an Eclipse IDE and run them on Lotus Notes. As described in [this tutorial](#) you can put Eclipse components on an Eclipse update site so that Notes pulls the components from this site when needed. However this does not allow developers to quickly change the Eclipse components in the IDE and test them. In order to do an iterative development there is another option that is described in this document.

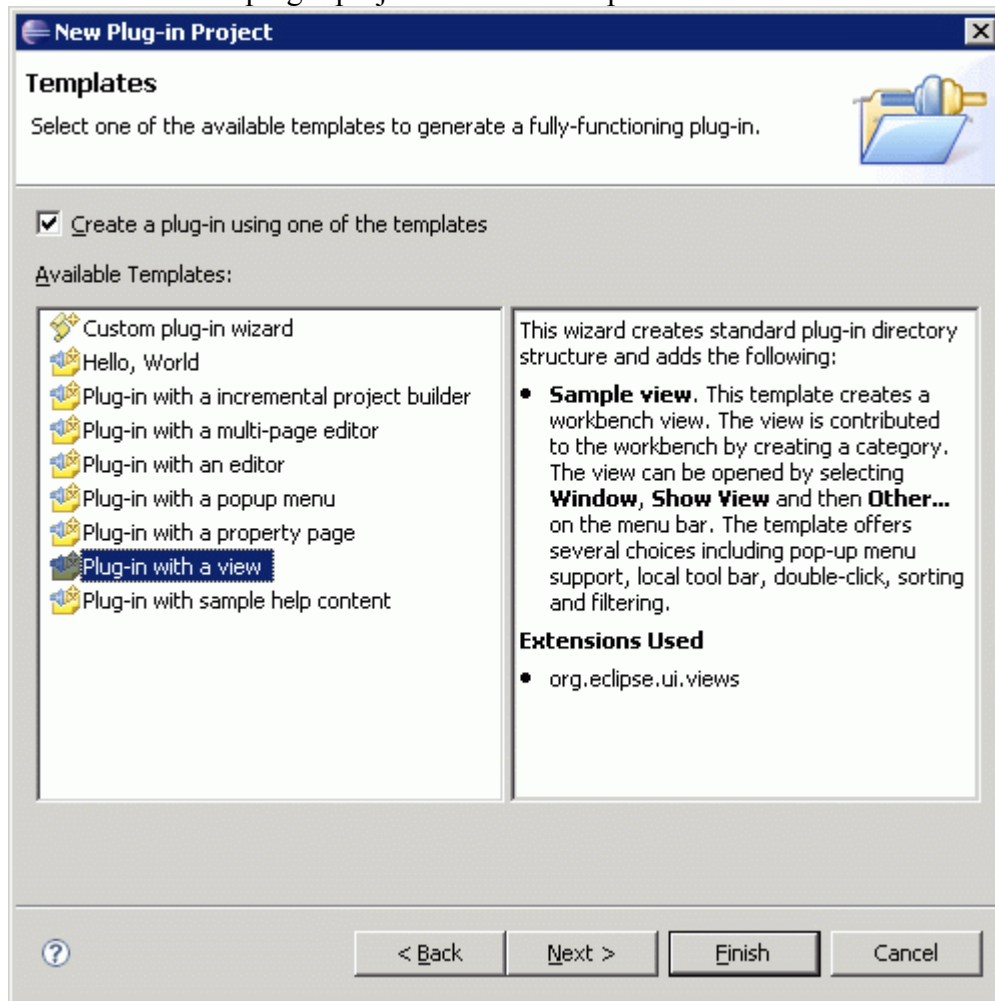
First of all you need to understand how to [launch Lotus Notes from your Eclipse IDE](#).

In your Eclipse IDE switch into the plugin perspective.

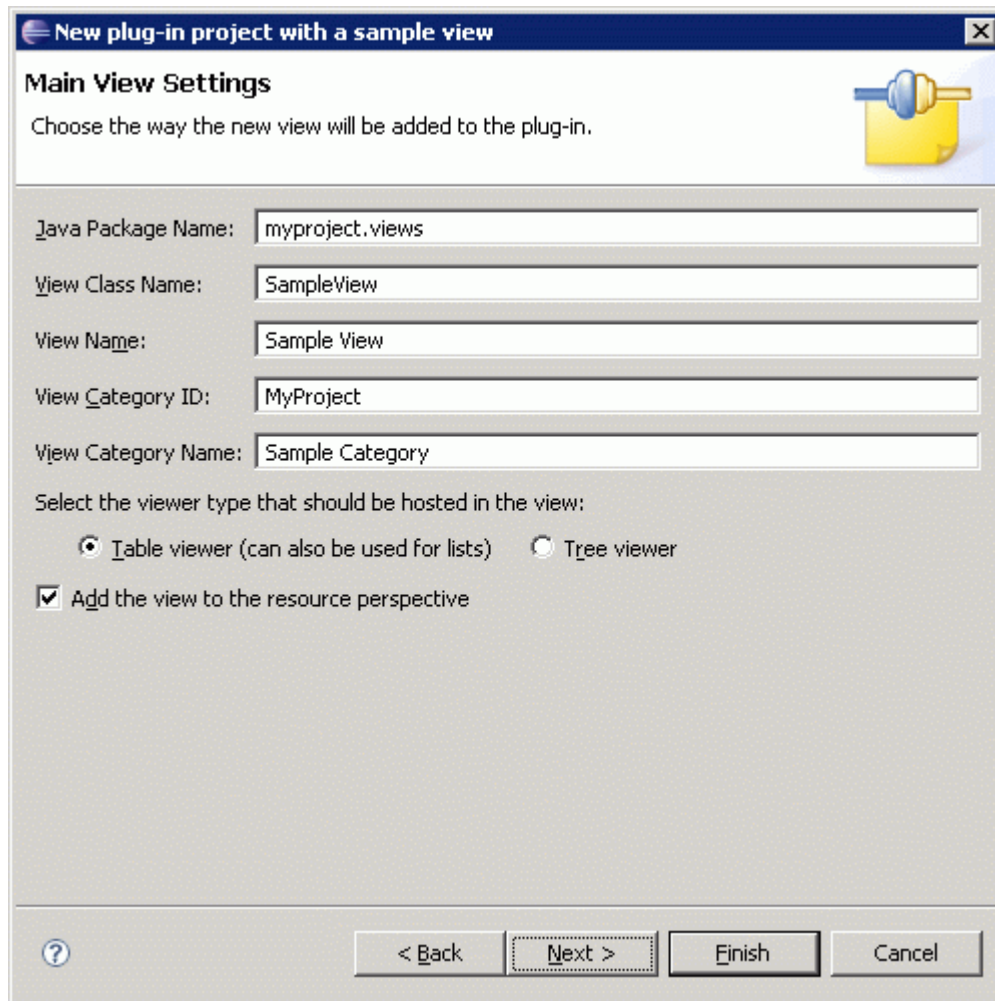
Then define in your preferences the compiler compliance level 1.4.



Next create a new plugin project and use a template to create a view.



Define the view name.



The image shows a dialog box titled "New plug-in project with a sample view" with a close button (X) in the top right corner. The main heading is "Main View Settings" and the instruction is "Choose the way the new view will be added to the plug-in." There is a yellow folder icon with a blue pushpin on the right side of the dialog.

The dialog contains the following fields and options:

- Java Package Name:
- View Class Name:
- View Name:
- View Category ID:
- View Category Name:

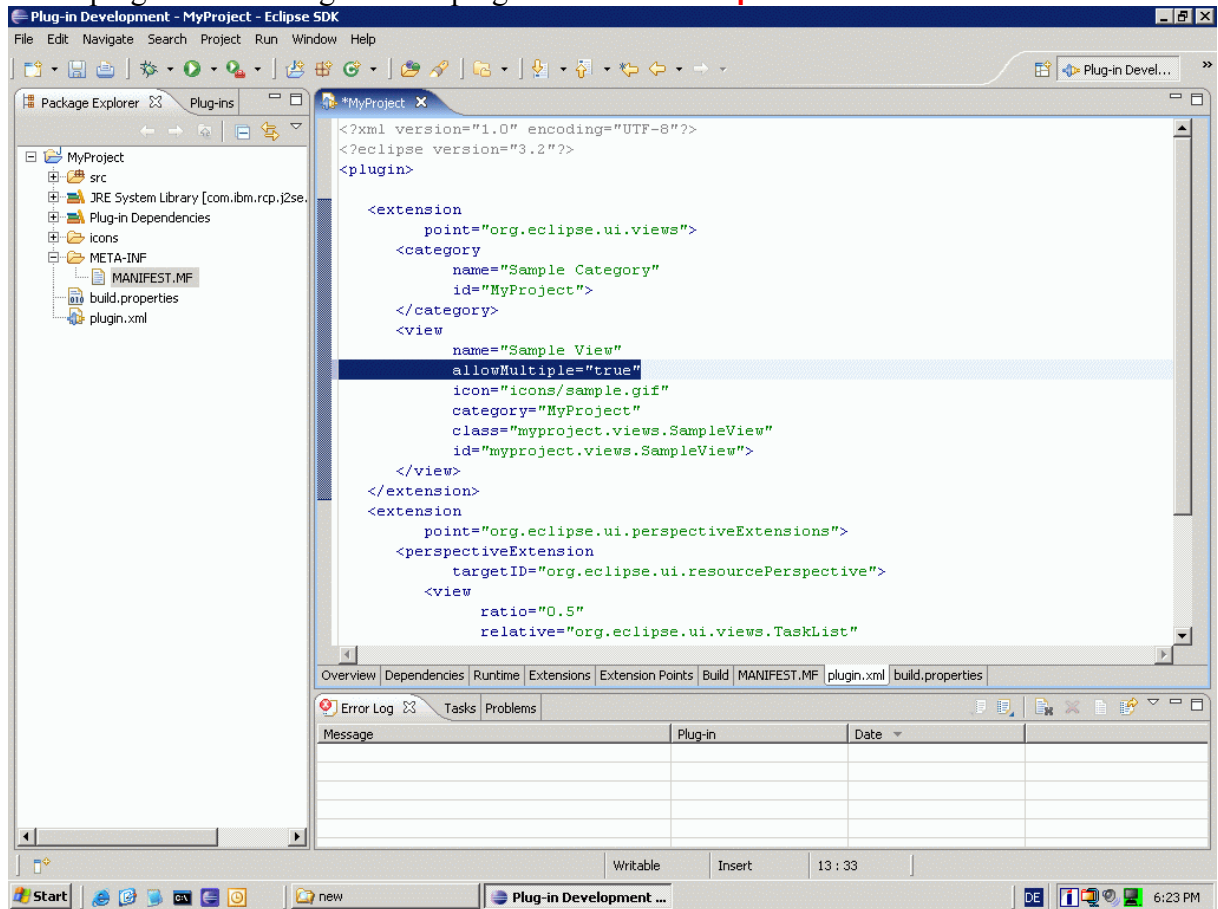
Select the viewer type that should be hosted in the view:

- Table viewer (can also be used for lists)
- Tree viewer

Add the view to the resource perspective

At the bottom, there is a help icon (question mark) on the left and four buttons: "< Back", "Next >", "Finish", and "Cancel".

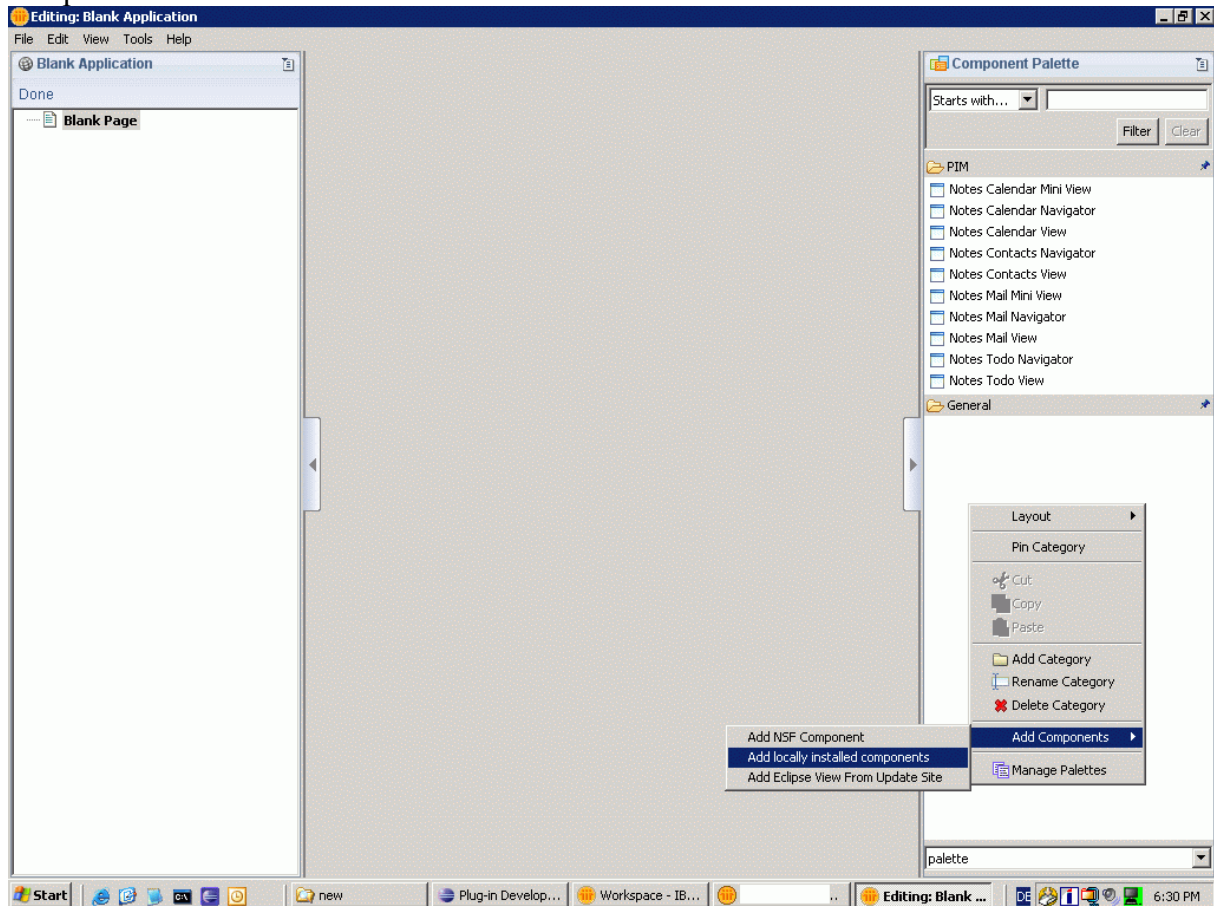
In the plugin.xml of the generated plugin add **allowMultiple="true"**:



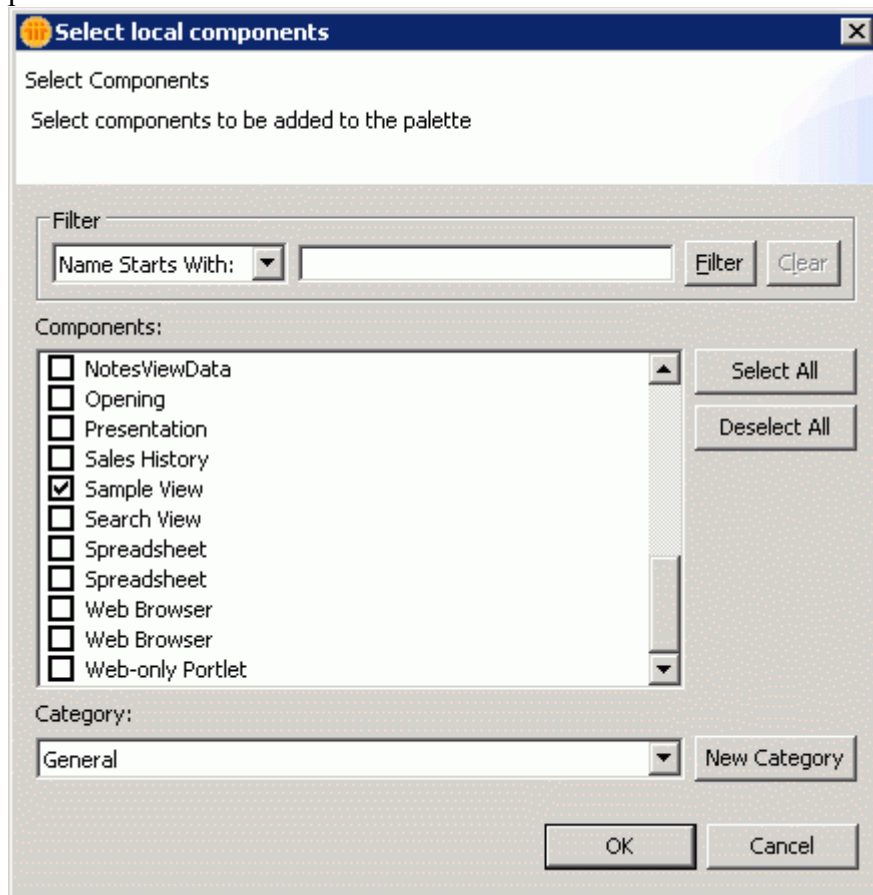
Next launch Lotus Notes from your Eclipse IDE.

Then create a new NSF based composite applications via Ctrl-N – ‘Blank Composite Application’ in Lotus Notes. Open this application in the Composite Application Editor via ‘Actions-Edit Application’.

In the Composite Application Editor choose ‘Add Components-Add locally installed components’:



Your new Eclipse component shows up in the next dialog. Select it so that it shows up on the palette.



In the last step you can now drag the component from the palette and drop it on the page.

